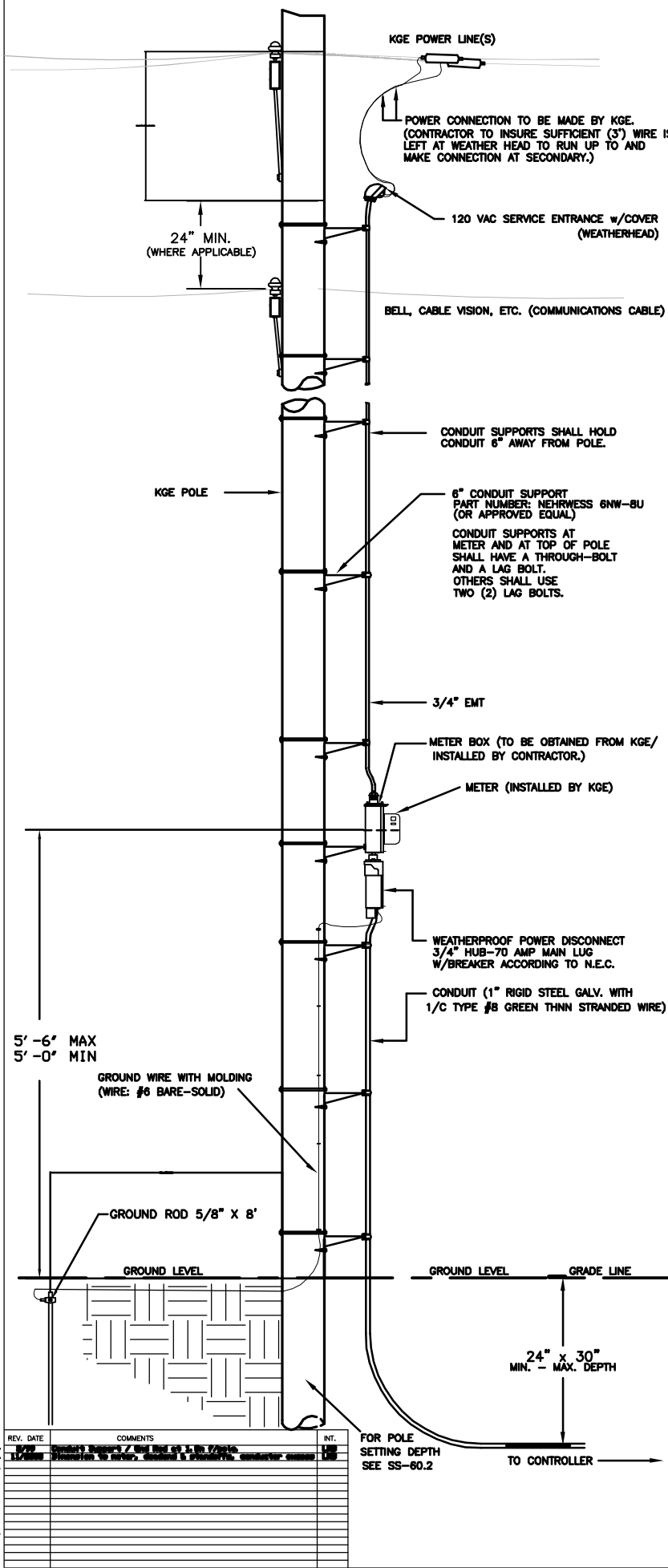
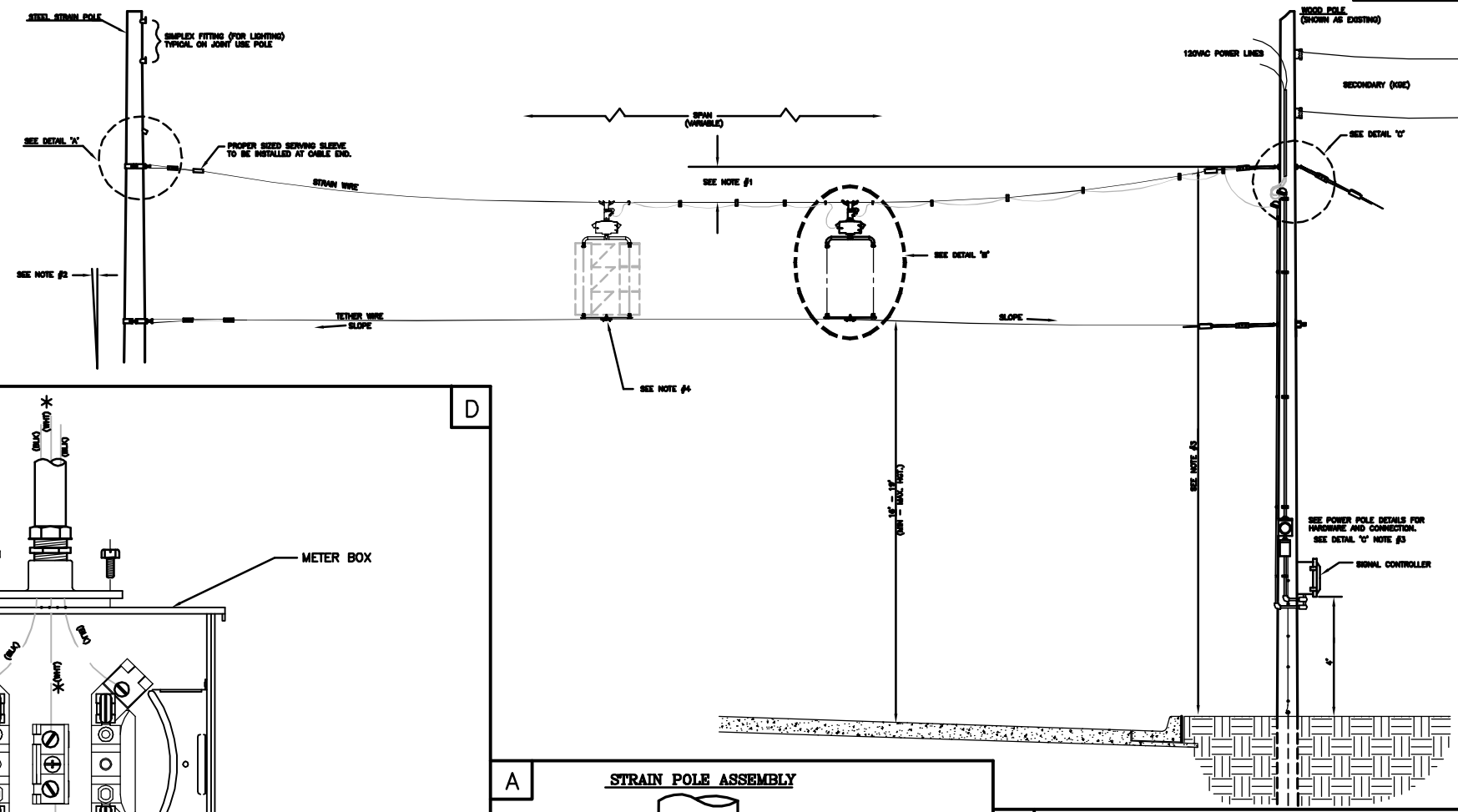


POWER POLE DETAILS



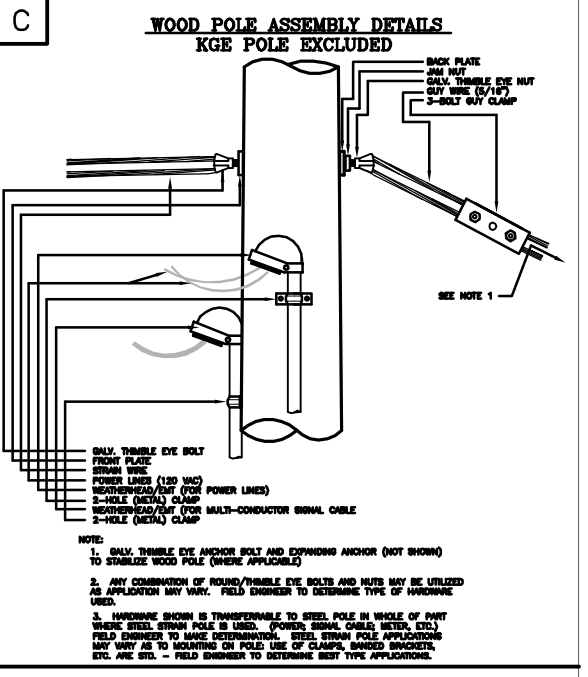
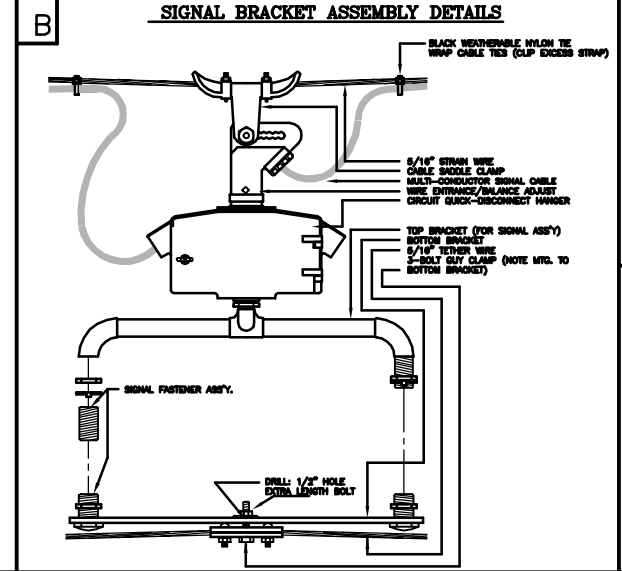
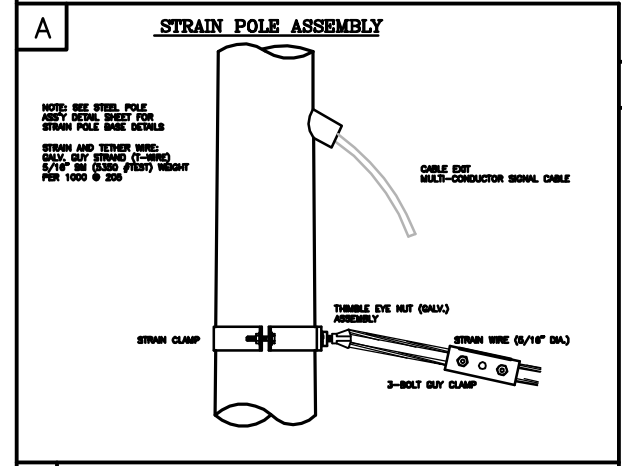
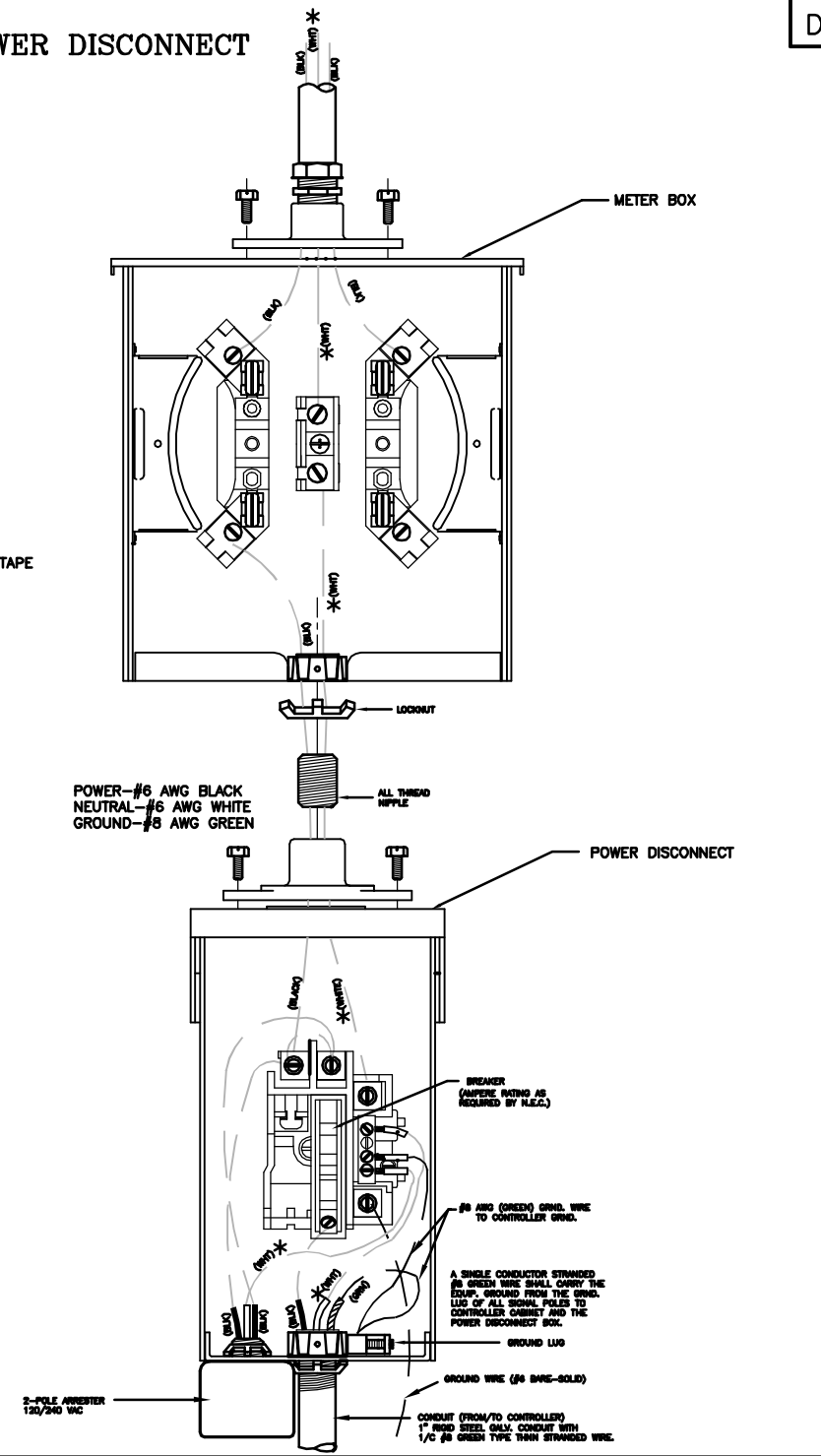
SPANWIRE ASSEMBLY DETAILS

1. MAX. SAG = 5% OF SPAN.
2. STANDARD BACKRAKE = 1.5'
3. HEIGHT OF STRAIN WIRE HOOK-UP TO BE DETERMINED BY FIELD ENGINEER. TRAFFIC SIGNAL CABLE TO BE SECURED TO STRAIN (SPAN) WIRE WEATHERABLE NYLON CABLE HANGERS (12" CTR.) DETAIL 'B'
4. TETHER CLAMP TO BE DESIGNED TO RELEASE UNDER 'HIGH WIND LOAD' TO PERMIT SIGNAL 'FREE SWING'.



METER BOX & POWER DISCONNECT DETAILS

NOTE:
* TO BE MARKED WITH WHITE TAPE



37TH STREET NORTH - TYLER ROAD TO RIDGE ROAD	
POWER POLE AND SPAN POLE ASSEMBLY DETAILS	
NO SCALE	
PROJECT NUMBER 472-84184	
DRAWN BY: T.M.	APPROVED BY: L.B.
DATE: FEB. 98	DATE: 2/26/99
CITY OF WICHITA DEPARTMENT OF PUBLIC WORKS	
DIVISION OF TRAFFIC ENGINEERING	
PAUL GUNZELMAN, P.E. TRAFFIC ENGINEER	SHEET 85 OF 146