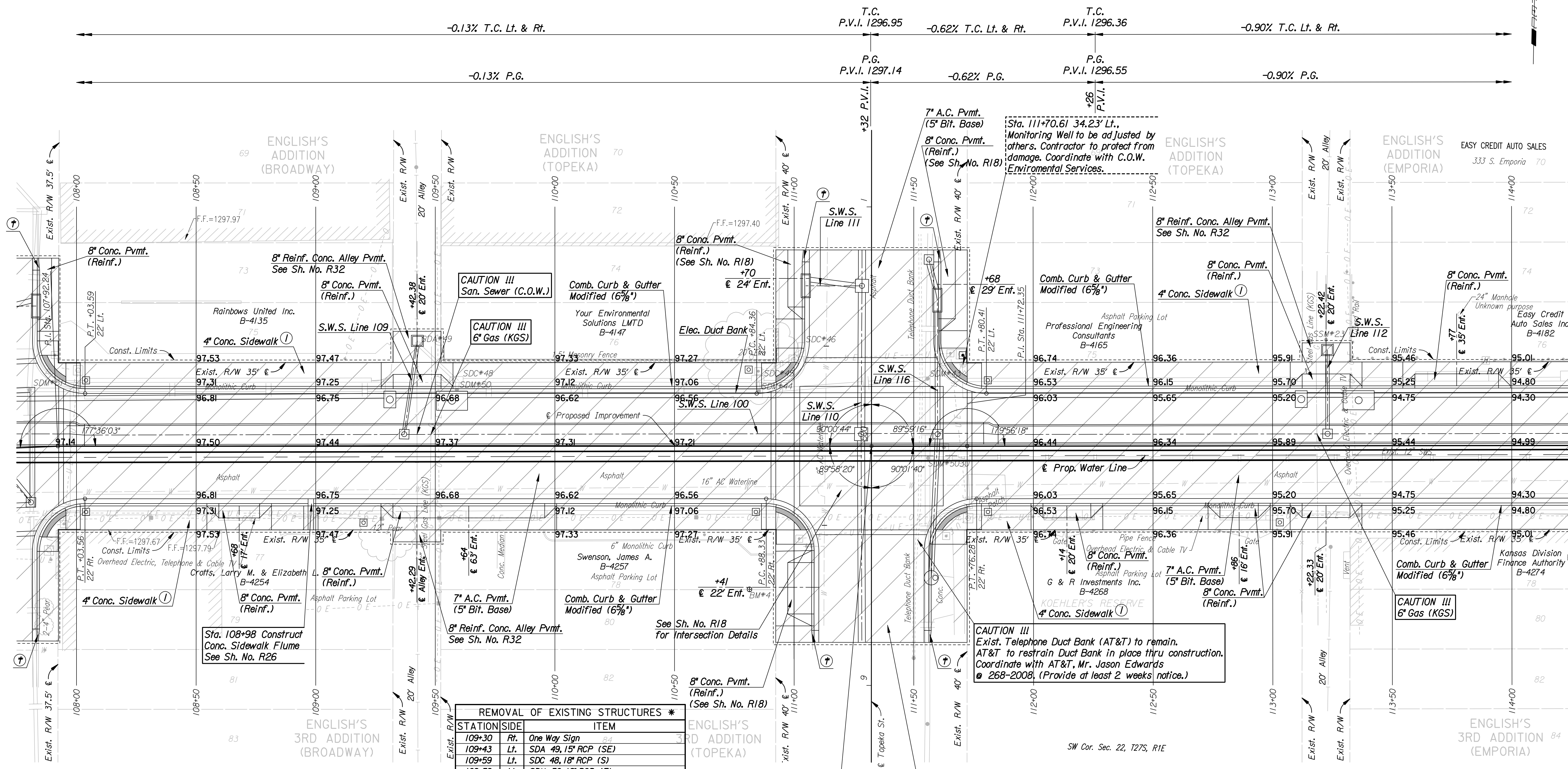
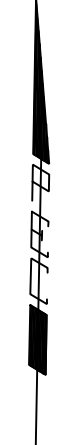


P.I. @ Sta. 111+72.35
 Deflection Angle = 0°03'42" Lt.
 I. No Monument Set



REMOVAL OF EXISTING STRUCTURES *		
STATION	SIDE	ITEM
109+30	Rt.	One Way Sign
109+43	Lt.	SDA 49, 15" RCP (SE)
109+59	Lt.	SDC 48, 18" RCP (S)
109+59	Lt.	SDM 50, 18" RCP (E)
110+84	Lt.	SDC 45, 15" RCP (N) & 18" RCP (E)
110+85	Lt.	SDM 44, 18" RCP (N)
110+85	Lt.	Reset Traffic Signal Pole
110+99	Lt.	Traffic Signal Junction Box
111+02	Rt.	Traffic Signal Pole
111+04	Lt.	SDC 46
111+56	Lt.	SDM 43, 24" RCP (N)
111+56	Rt.	SDM 5030, 24" RCP (S) & 12" RCP (E)
111+63	Rt.	Abandon Vault
111+64	Rt.	Traffic Signal Pole
111+65	Lt.	Traffic Signal Pole
111+70	Lt.	Traffic Signal Junction Box
111+73	Rt.	Traffic Signal Junction Box

* For Information Only

- Utilities**
- Gas: Kansas Gas Service
 - Power: Westar Energy
 - Sanitary Sewer: Wichita Water and Sanitary Sewer
 - Storm Water Sewer: Wichita Water and Sanitary Sewer
 - Telephone: AT&T
 - Television: Cox Communication
 - Water: Wichita Water and Sanitary Sewer

BM#5 Chis. *W top of curb on Broadway 100' ± S of E of Waterman St. on S side of McDonald's entrance. 105.46' Rt. @ Sta. 107+21.71 Elev. = 1297.00

- ⊕ 5' Transition from Combined Curb & Gutter Modified to match existing Curb & Gutter.
- ① See Sh. LI-L7 for Sidewalk Jointing Patterns

BM#4 Chis. *E end conc. island at Bank of America ATM on SW corner of Waterman St. and Topeka St. 59.86' Rt. @ Sta. 110+81.35 Elev. = 1297.95

LEGEND

Pavement Removal

DSNR: MJW OPER: DRP SCALE: 1"=20' 1/2/2006/06237/PLAN/06237-000-PL108.DGN 7-5-2006 10:21:00 LAST REV: 2-23-2007 BY: drp

No. _____		Revision WATERMAN STREET		By _____		Date _____	
PLAN STA. 108+00 TO STA. 114+00 JAMES L. ARMOUR, P.E.—CITY ENGINEER CITY OF WICHITA PROJECT NO. 468-84167							
Professional Engineering Consultants, P.A. 303 S. TOPEKA • WICHITA, KANSAS 67202 316-262-2691 • FAX 316-262-3003							
Designed by	MJW	Job No.	06237	Sht.		R6 of R111	
Drawn by	DRP	Date	Feb., 2007				