

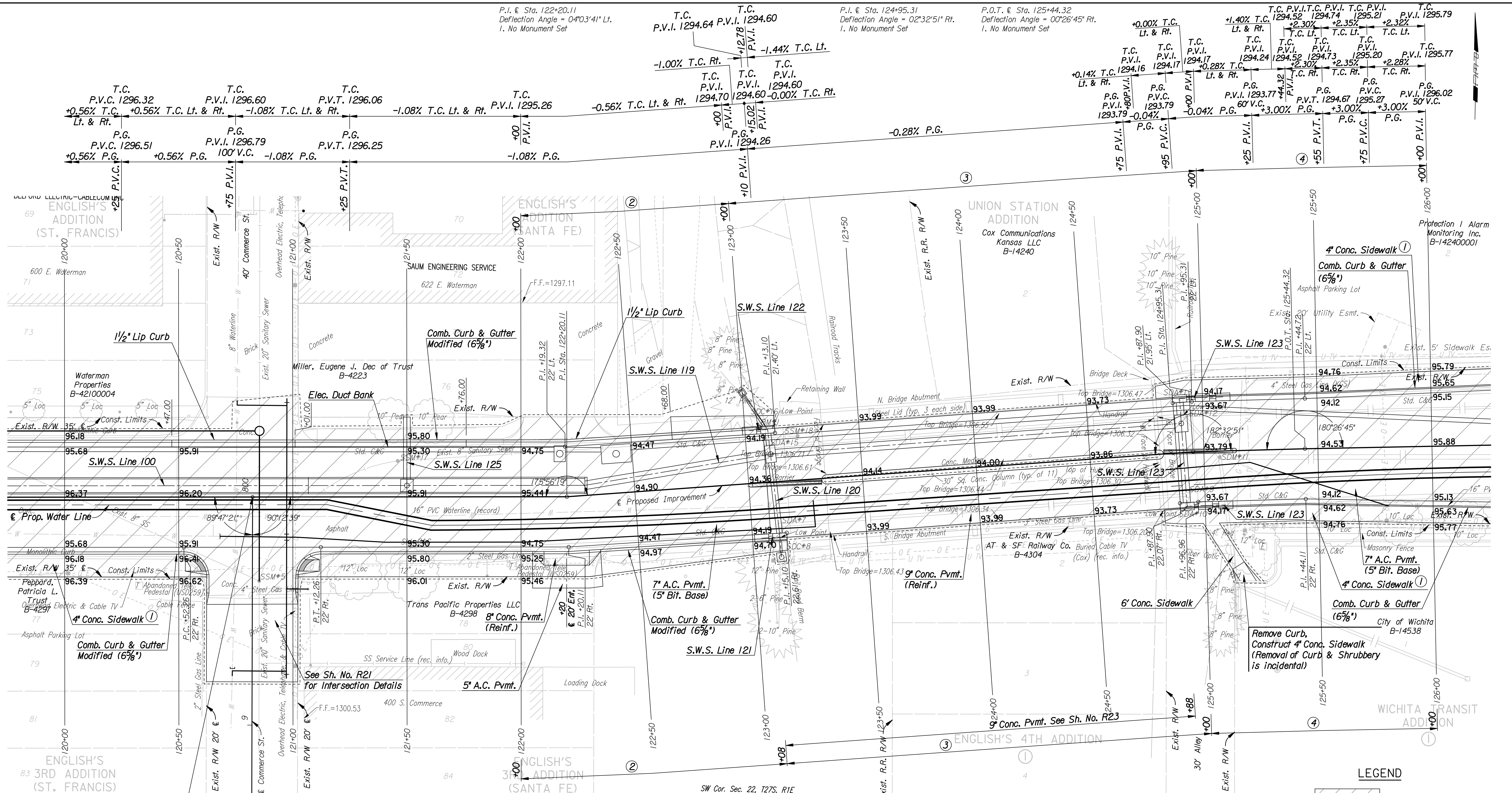
P.I. @ Sta. 122+20.11
Deflection Angle = 0°03'41" Lt.
I. No Monument Set

T.C. P.V.I. 1294.64 P.V.I. 1294.60
-1.00% T.C. Rt. +12.78 P.V.I.
-1.44% T.C. Lt.

P.I. @ Sta. 124+95.31
Deflection Angle = 0°23'25" Rt.
I. No Monument Set

P.O.T. @ Sta. 125+44.32
Deflection Angle = 0°26'45" Rt.
I. No Monument Set

+0.00% T.C. Lt. & Rt. T.C. P.V.I. 1294.52 T.C. P.V.I. 1294.74 T.C. P.V.I. 1295.21 T.C. P.V.I. 1295.79
+1.40% T.C. Lt. & Rt. T.C. P.V.I. 1294.24 T.C. P.V.I. 1294.52 T.C. P.V.I. 1294.73 T.C. P.V.I. 1295.20 T.C. P.V.I. 1295.77
+0.14% T.C. Lt. & Rt. P.G. P.V.I. 1293.79 P.G. P.V.I. 1293.79 P.G. P.V.I. 1293.79 P.G. P.V.I. 1293.79 P.G. P.V.I. 1293.79
+0.28% T.C. Lt. & Rt. P.G. P.V.I. 1293.79 P.G. P.V.I. 1293.79 P.G. P.V.I. 1293.79 P.G. P.V.I. 1293.79 P.G. P.V.I. 1293.79
+0.04% P.G. P.V.I. 1293.79 P.G. P.V.I. 1293.79 P.G. P.V.I. 1293.79 P.G. P.V.I. 1293.79 P.G. P.V.I. 1293.79
+0.04% P.G. P.V.I. 1293.79 P.G. P.V.I. 1293.79 P.G. P.V.I. 1293.79 P.G. P.V.I. 1293.79 P.G. P.V.I. 1293.79
+3.00% P.G. P.V.I. 1293.79 P.G. P.V.I. 1293.79 P.G. P.V.I. 1293.79 P.G. P.V.I. 1293.79 P.G. P.V.I. 1293.79
+3.00% P.G. P.V.I. 1293.79 P.G. P.V.I. 1293.79 P.G. P.V.I. 1293.79 P.G. P.V.I. 1293.79 P.G. P.V.I. 1293.79
+3.00% P.G. P.V.I. 1293.79 P.G. P.V.I. 1293.79 P.G. P.V.I. 1293.79 P.G. P.V.I. 1293.79 P.G. P.V.I. 1293.79
+3.00% P.G. P.V.I. 1293.79 P.G. P.V.I. 1293.79 P.G. P.V.I. 1293.79 P.G. P.V.I. 1293.79 P.G. P.V.I. 1293.79



- Gas
Power
Sanitary Sewer
Storm Water Sewer
Telephone
Television
Water
- Kansas Gas Service
Westar Energy
Wichita Water and Sanitary Sewer
Wichita Water and Sanitary Sewer
AT&T
Cox Communication
Wichita Water and Sanitary Sewer

REMOVAL OF EXISTING STRUCTURES *		
STATION	SIDE	ITEM
120+54	Lt.	Stop Sign
120+85	Rt.	Adjust SSM 5, Remove 8" PVC (NE)
121+07	Rt.	Stop Sign
121+20	Rt.	12" Clr., Low Clr. & No Parking Signs
121+46	Lt.	SSM 17 & 8" PVC (E)
122+50	Rt.	Speed Limit Sign
122+60	Lt.	No Parking Sign
123+10	Lt.	SDC 16 & 8" PVC (N)
123+10	Lt.	SDA 15, 12" CIP (N) & 15" VCP (E)
123+12	Rt.	SDC 8, 8" CIP (S) & 12" RCP (N)

REMOVAL OF EXISTING STRUCTURES *		
STATION	SIDE	ITEM
123+12	Rt.	SDA 7 & 15" RCP (E)
123+23	Lt.	SSM 18
123+30	€	Object Marker & Flashing Yellow
124+80	€	Object Marker & Flashing Yellow
124+91	Lt.	SDA 13, 4" PVC (W) & 12" VCP (S)
124+92	Lt.	SDA 12, 12" VCP (E) & 15" VCP (SE)
124+92	Rt.	SDA 10, 4" PVC (SW) & 12" RCP (N)
124+92	Rt.	SDA 9 & 15" VCP (NE)
125+07	Rt.	SDM 11, 24" VCP (E) & 15" RCP (S)
125+25	Lt./Rt.	No Parking Sign

- See Sh. LI-L7 for Sidewalk Jointing Patterns
- Transition Cross Slope from $-\frac{3}{8}$ "/ft. at Sta. 122+00 to -0.55% at Sta. 123+08.
- Transition Cross Slope from -0.55% at Sta. 123+08 to -0.75% at Sta. 125+00.
- Transition Cross Slope from -0.75% at Sta. 125+00 to $-\frac{3}{8}$ "/ft. at Sta. 126+00.

WATERMAN STREET

PLAN
STA. 120+00 TO STA. 126+00

JAMES L. ARMOUR, P.E. - CITY ENGINEER
CITY OF WICHITA PROJECT NO. 468-84167

Professional Engineering Consultants, P.A.
303 S. TOPKA • WICHITA, KANSAS 67202
316-262-2691 • FAX 316-262-3003

Designed by: MJW Job No.: 06237
Drawn by: DRP Date: Feb., 2007 Sht. R8 of R111

DSNR: MJW OPER: DRP SCALE: 1"=20'
 I:/2006/06237/PLAN/06237-000-PL120.DGN LAST REV: 2-23-2007 BY: drp

BM#2 Chis. "W" edge conc. parking lot S side of conc. drive 25' ± N of NE corner of Waterman St. and St. Francis St.
63.98' Lt. @ Sta. 119+32.75 Elev.=1296.05

BM#1 Chis. "W" SW corner curb inlet N side of Waterman St. on W side of RR bridge.
24.18' Lt. @ Sta. 123+06.49 Elev.=1294.96