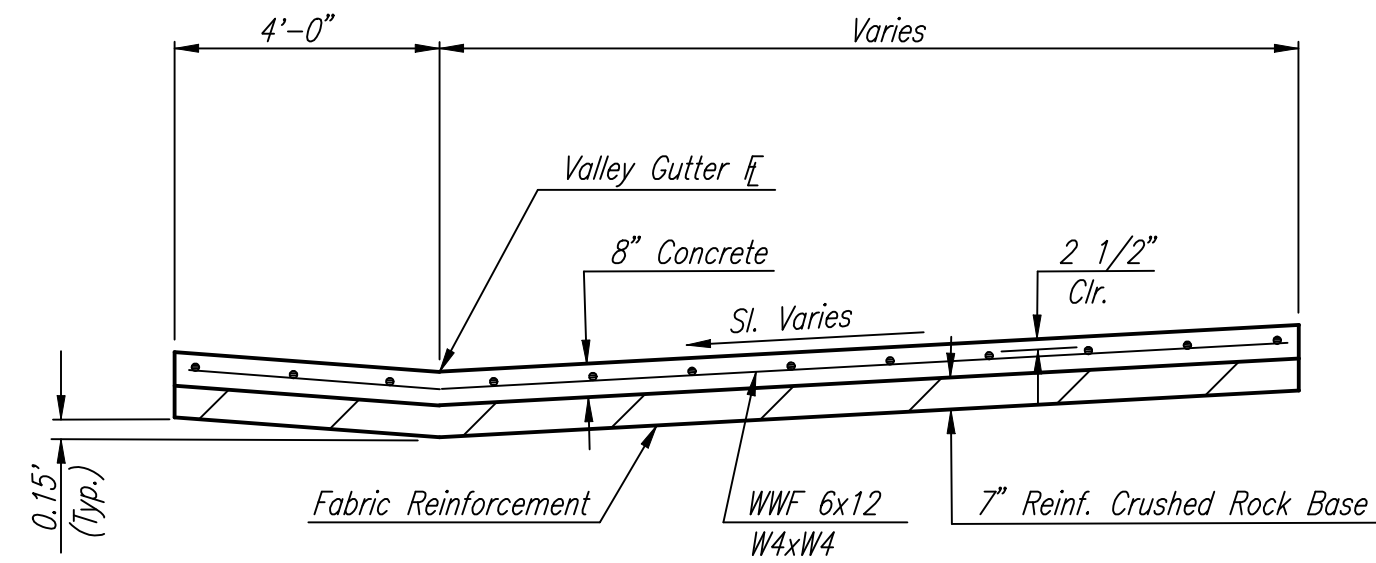
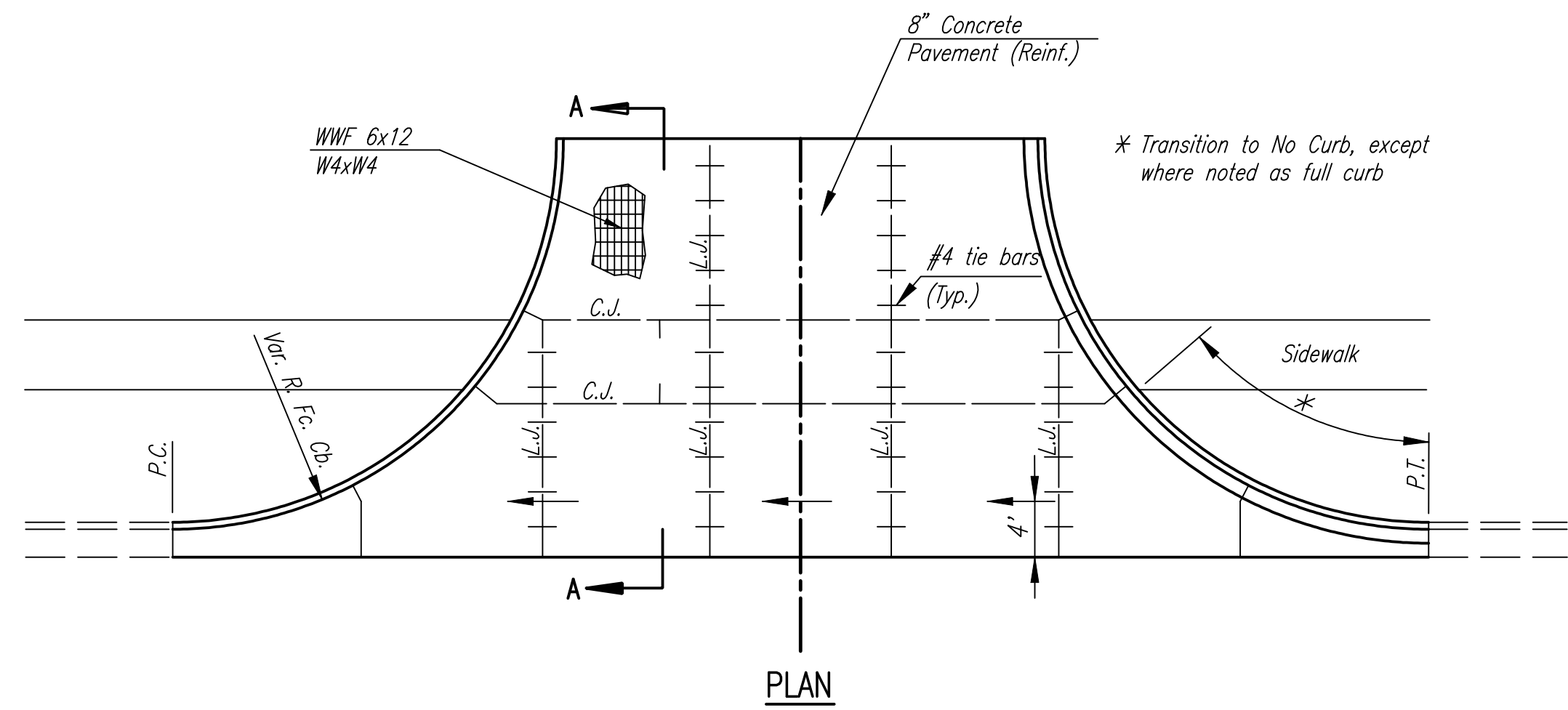
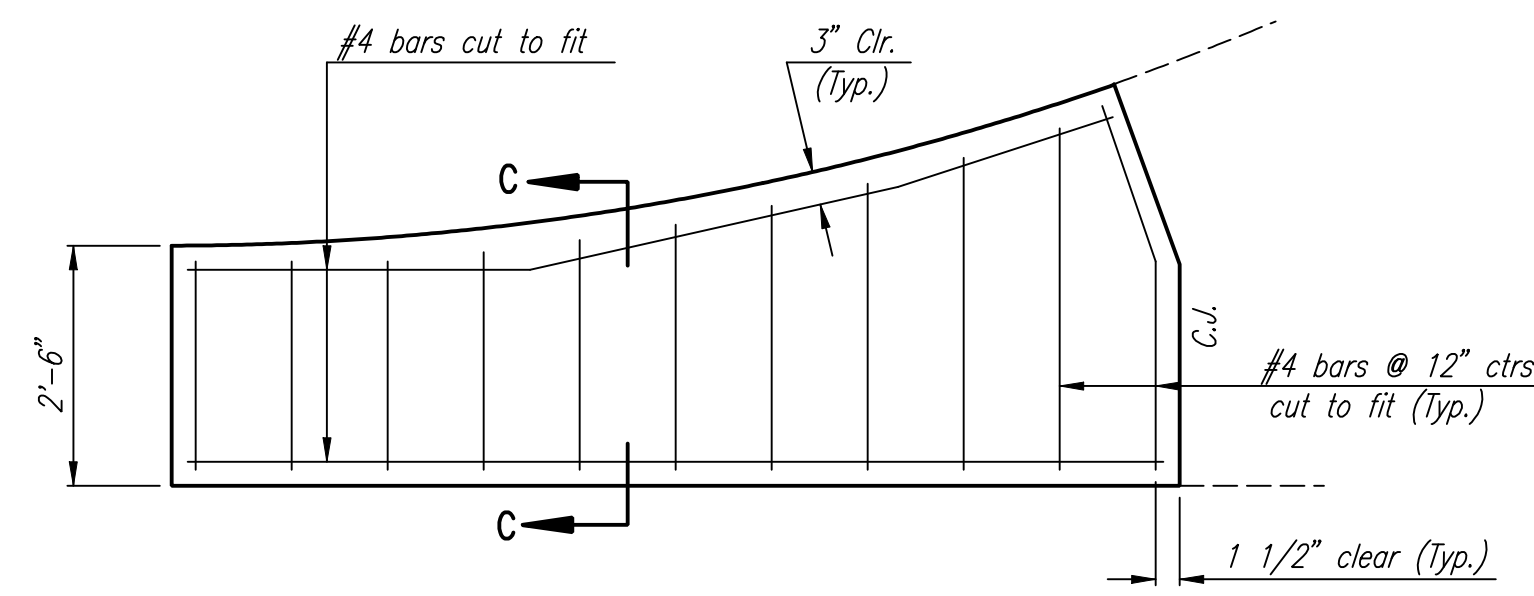
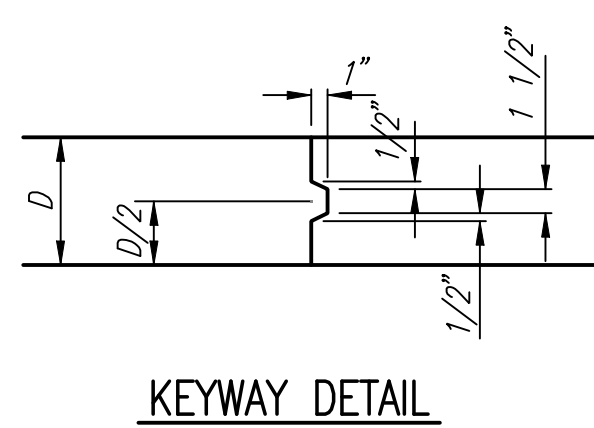
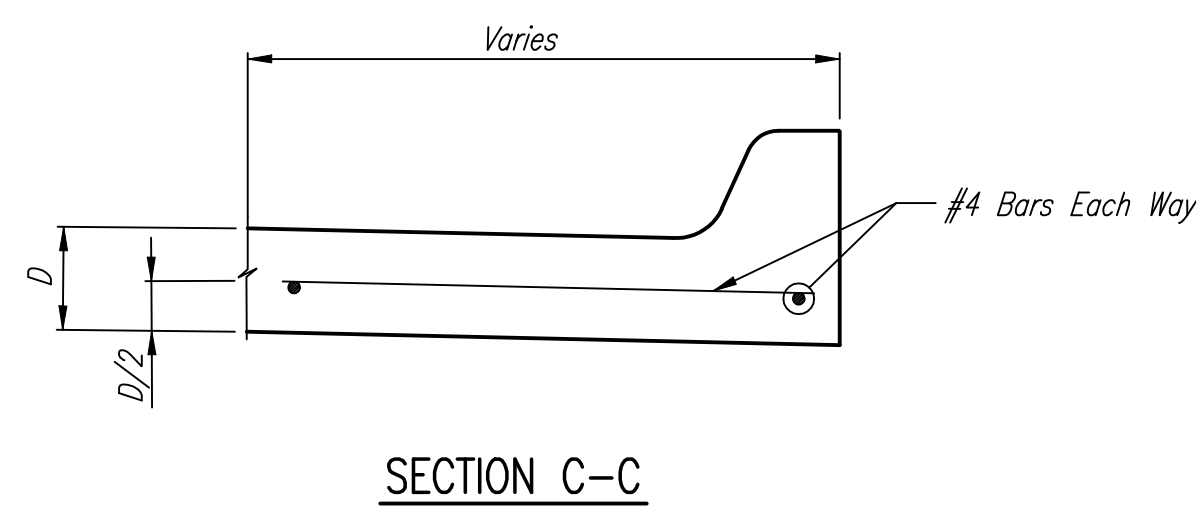


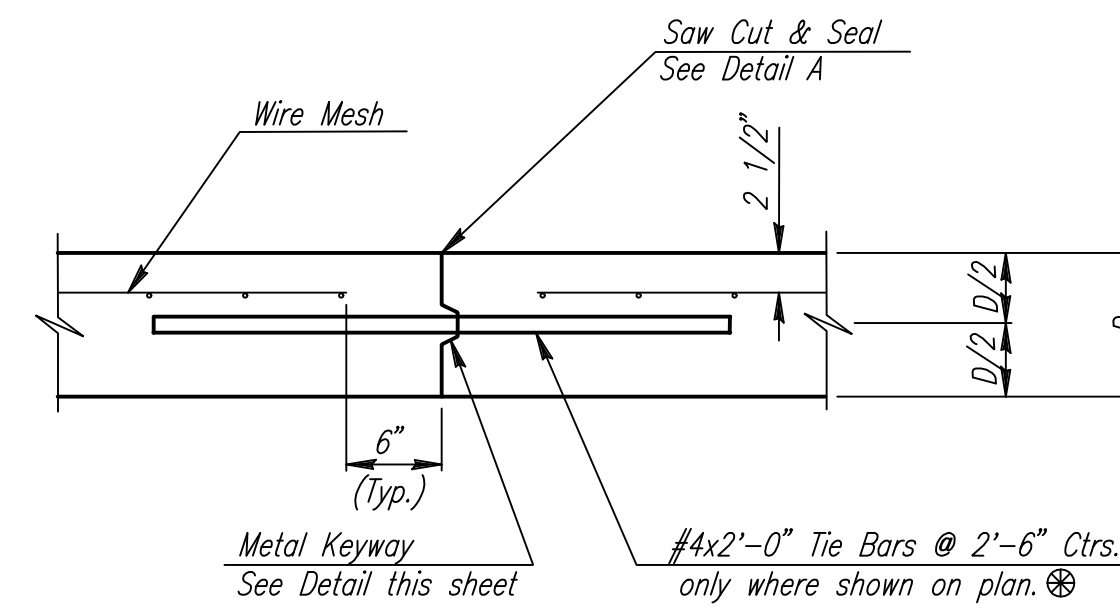
DSNR: OPER: DRP SCALE: I:/2006/06237/STANDARDS/06237-VALGUTDITL.DGN LAST REV: 2-26-2007 BY: DRP



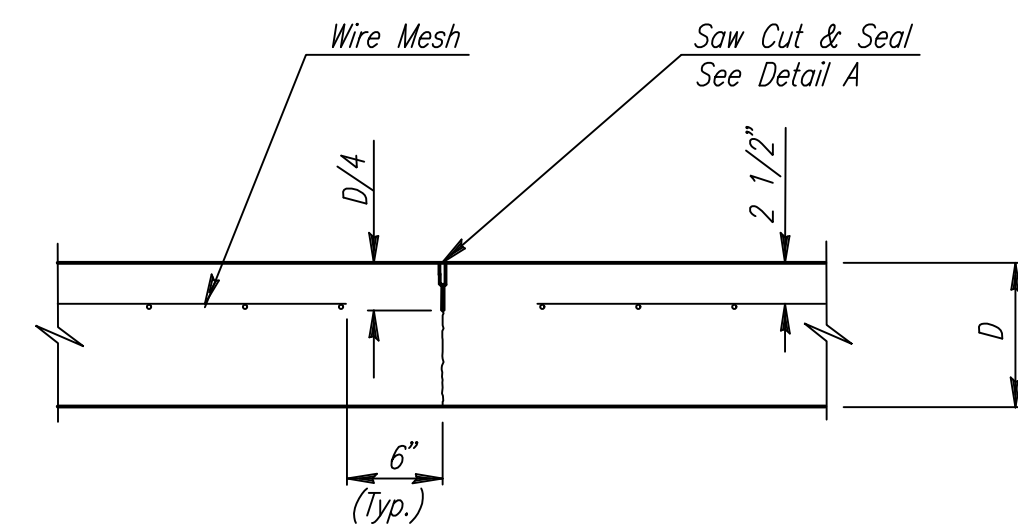
NOTE: OMIT REINFORCING MESH AT ALL JOINTS
 NOTE: ALL CONCRETE VALLEY GUTTER REINFORCEMENT SHALL BE ADEQUATELY SUPPORTED BY BAR CHAIRS IN THE REQUIRED POSITION UNLESS APPROVED OTHERWISE BY THE ENGINEER.



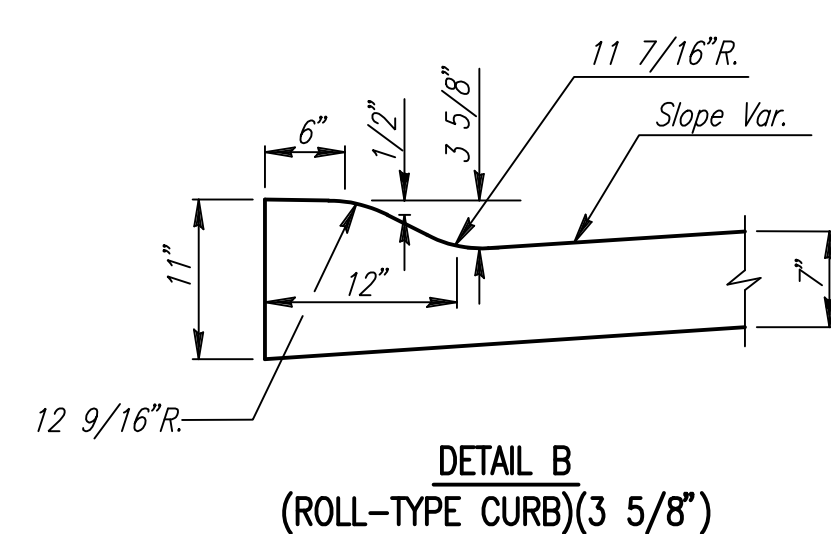
WING REINFORCING DETAIL
 NOTE: OMIT WIRE FABRIC REINFORCING IN THIS SECTION.



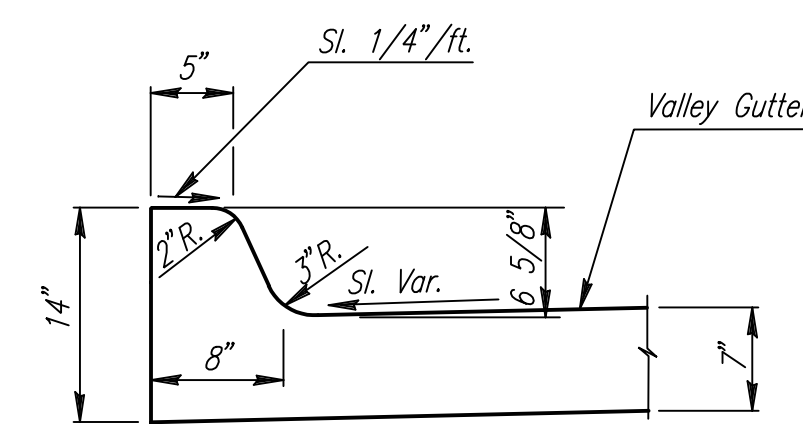
LONGITUDINAL CONSTRUCTION JOINT DETAIL
REINFORCED PAVEMENT
(TRANSVERSE SECTION)
(ALTERNATE L.J.)



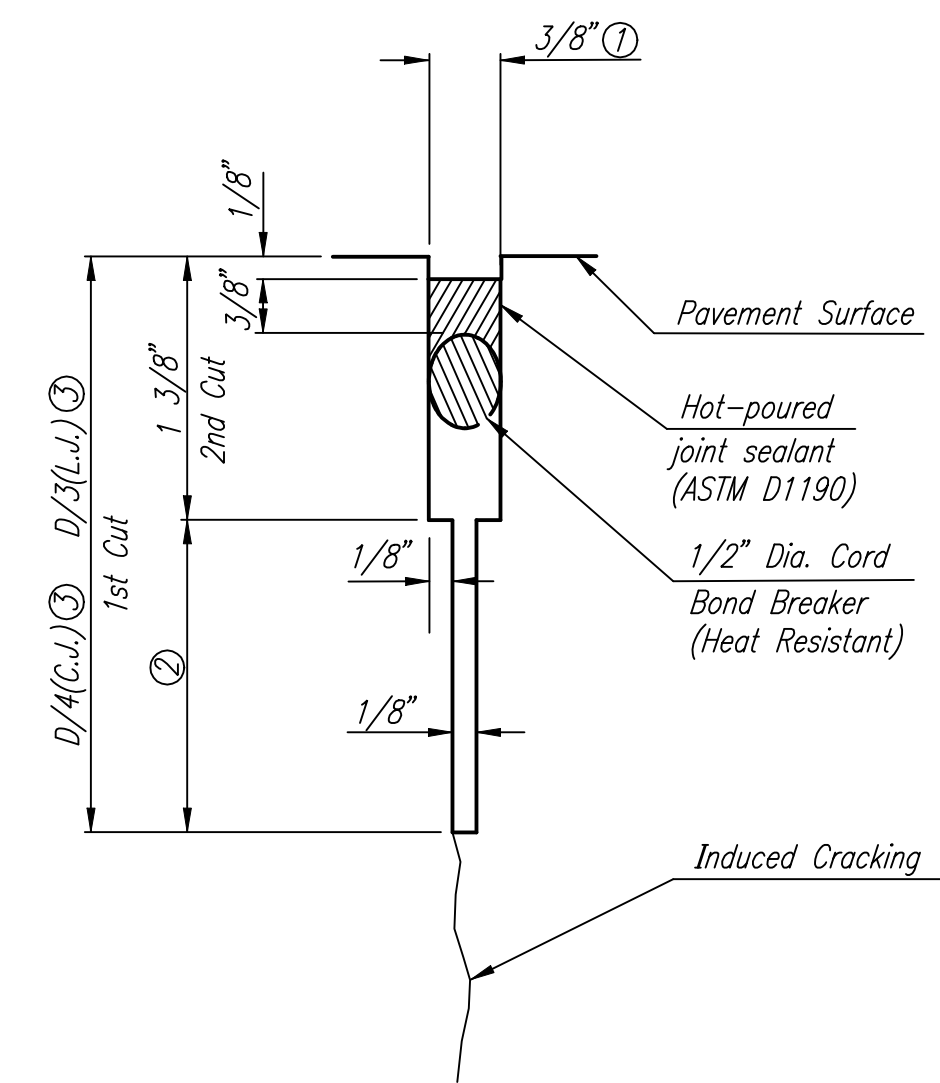
CONTRACTION JOINT DETAIL
REINFORCED PAVEMENT
(C.J.)



MONOLITHIC EDGE CURB

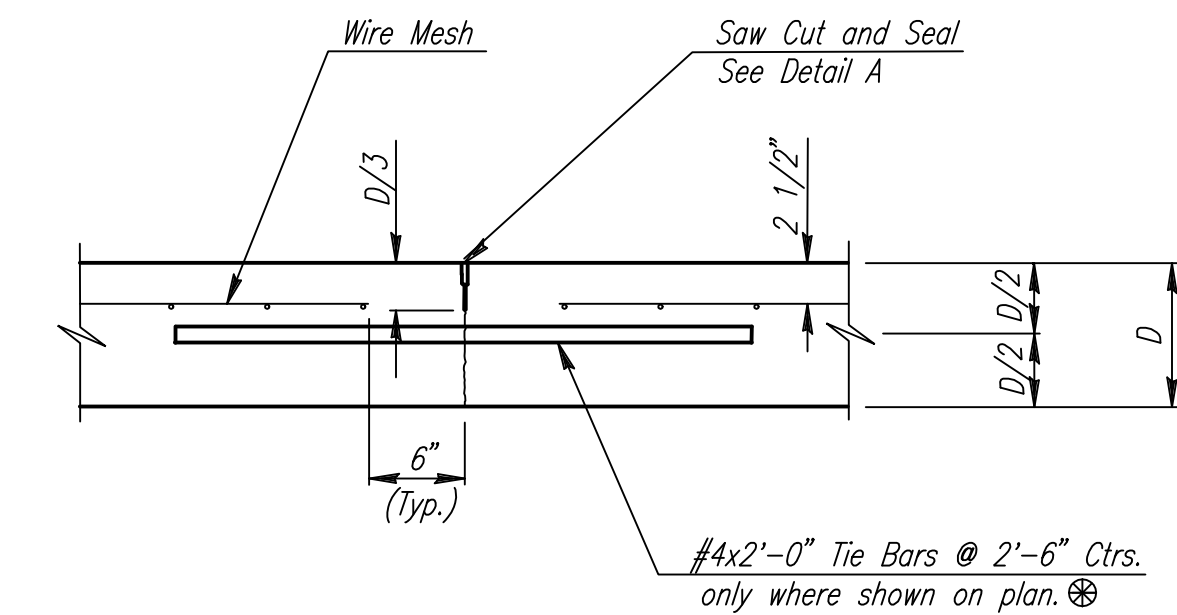


DETAIL C
(STANDARD CURB)(6 5/8")



DETAIL A

- ① To be accomplished in 2 cuts for Longitudinal Joints and Contraction Joints. Initial cut to be 1 3/8" wide.
- ② Eliminate bottom of cut when metal keyway is used as part of Longitudinal or Transverse Construction Joint and at Doweled Construction Joint Locations.
- ③ 1 1/2" Minimum



LONGITUDINAL JOINT DETAIL
REINFORCED PAVEMENT
(TRANSVERSE SECTION)

No.	Revision	By	Date
WATERMAN STREET SPECIAL ENTRANCES FULL HEIGHT CURB JAMES L. ARMOUR, P.E.—CITY ENGINEER CITY OF WICHITA PROJECT NO. 468-84167 Professional Engineering Consultants, P.A. 303 S. TOPEKA • WICHITA, KANSAS 67202 316-262-2691 • FAX 316-262-3003			
Designed by	Job No.	06237	
Drawn by	Date	Feb., 2007	
			Sht. R31 of R111