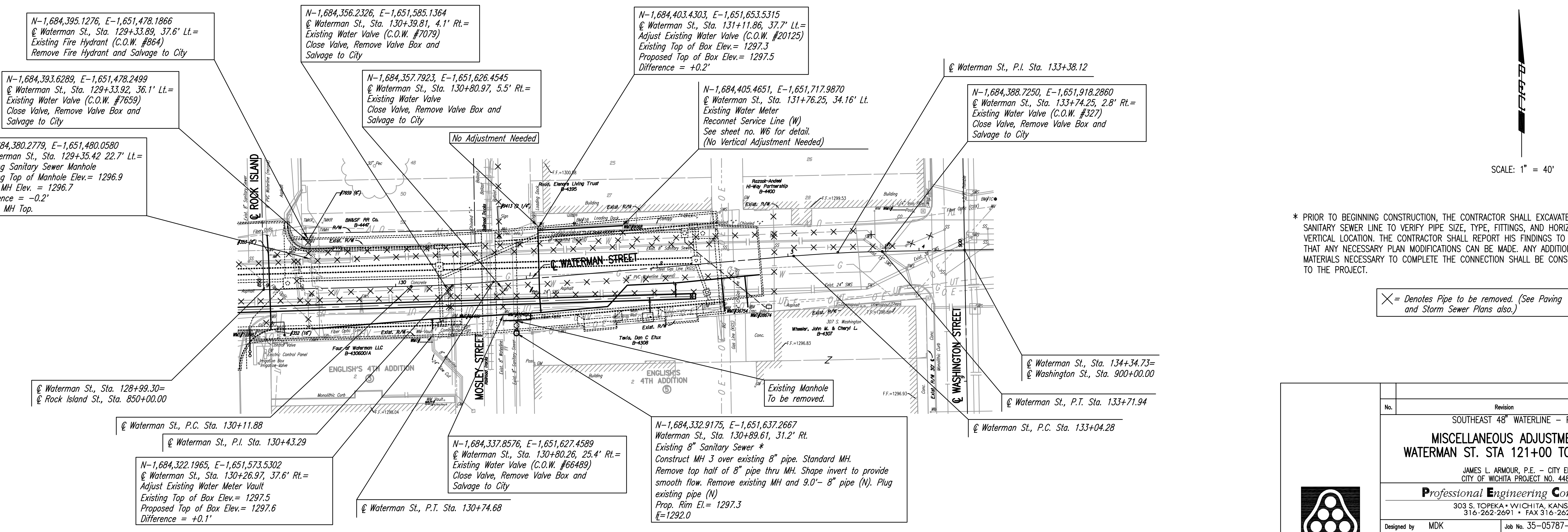
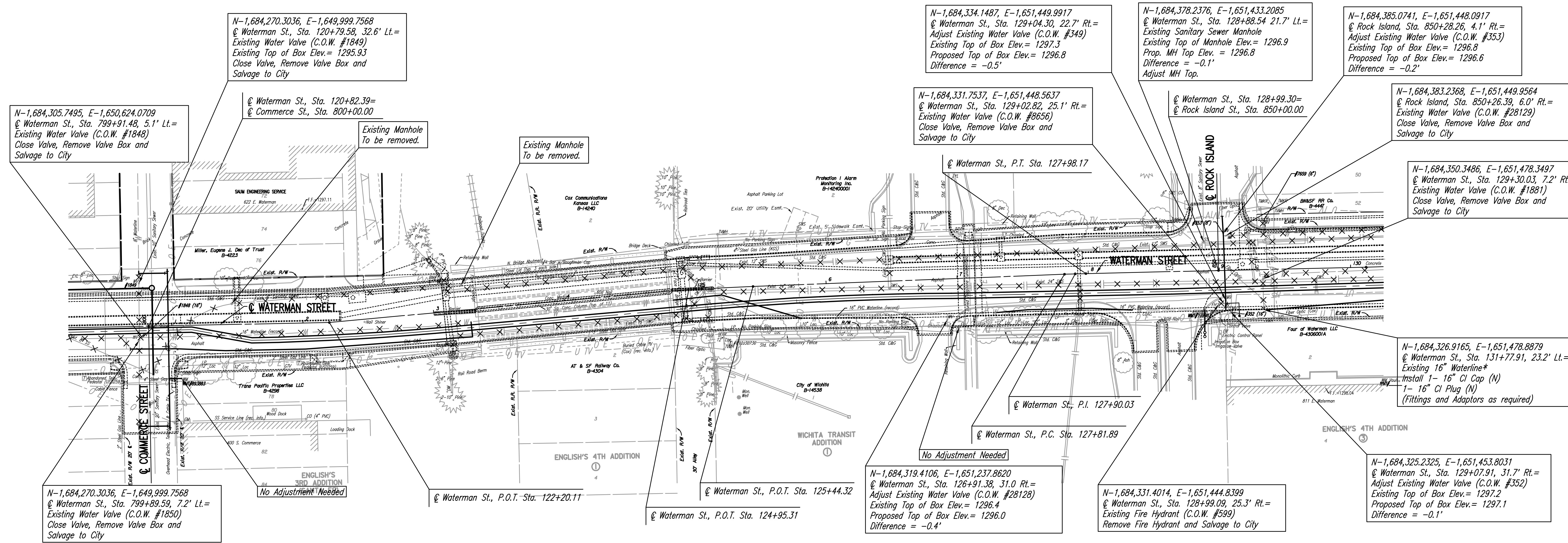


SCALE: 1" = 40'

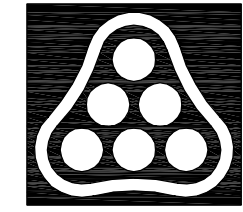


SCALE: 1" = 40'

* PRIOR TO BEGINNING CONSTRUCTION, THE CONTRACTOR SHALL EXCAVATE THE EXISTING 8" SANITARY SEWER LINE TO VERIFY PIPE SIZE, TYPE, FITTINGS, AND HORIZONTAL AND VERTICAL LOCATION. THE CONTRACTOR SHALL REPORT HIS FINDINGS TO THE ENGINEER SO THAT ANY NECESSARY PLAN MODIFICATIONS CAN BE MADE. ANY ADDITIONAL LABOR OR MATERIALS NECESSARY TO COMPLETE THE CONNECTION SHALL BE CONSIDERED SUBSIDIARY TO THE PROJECT.

X = Denotes Pipe to be removed. (See Paving and Storm Sewer Plans also.)

No.	Revision	By	Date
SOUTHEAST 48" WATERLINE - PHASE 1B			
MISCELLANEOUS ADJUSTMENT PLANS			
WATERMAN ST. STA 121+00 TO STA 134+00			
JAMES L. ARMOUR, P.E. - CITY ENGINEER CITY OF WICHITA PROJECT NO. 448-90182			
Professional Engineering Consultants, P.A.			
303 S. TOPEKA • WICHITA, KANSAS 67202 316-262-2691 • FAX 316-262-3003			
Designed by	MDK	Job No.	35-05787-001-42
Drawn by	CSL	Date	March 2006
			Sht. W27 of 31



Saved: 02-27-2007 10:21:44 AM by: CSI
 Plot Scale: 1"=40' 02-27-2007 10:55:40 AM by: BEJ
 J:\SEN\001\2006\06237\2007-02-28 Final to DOW\DWG\W27-MiscAdjustments-Plans