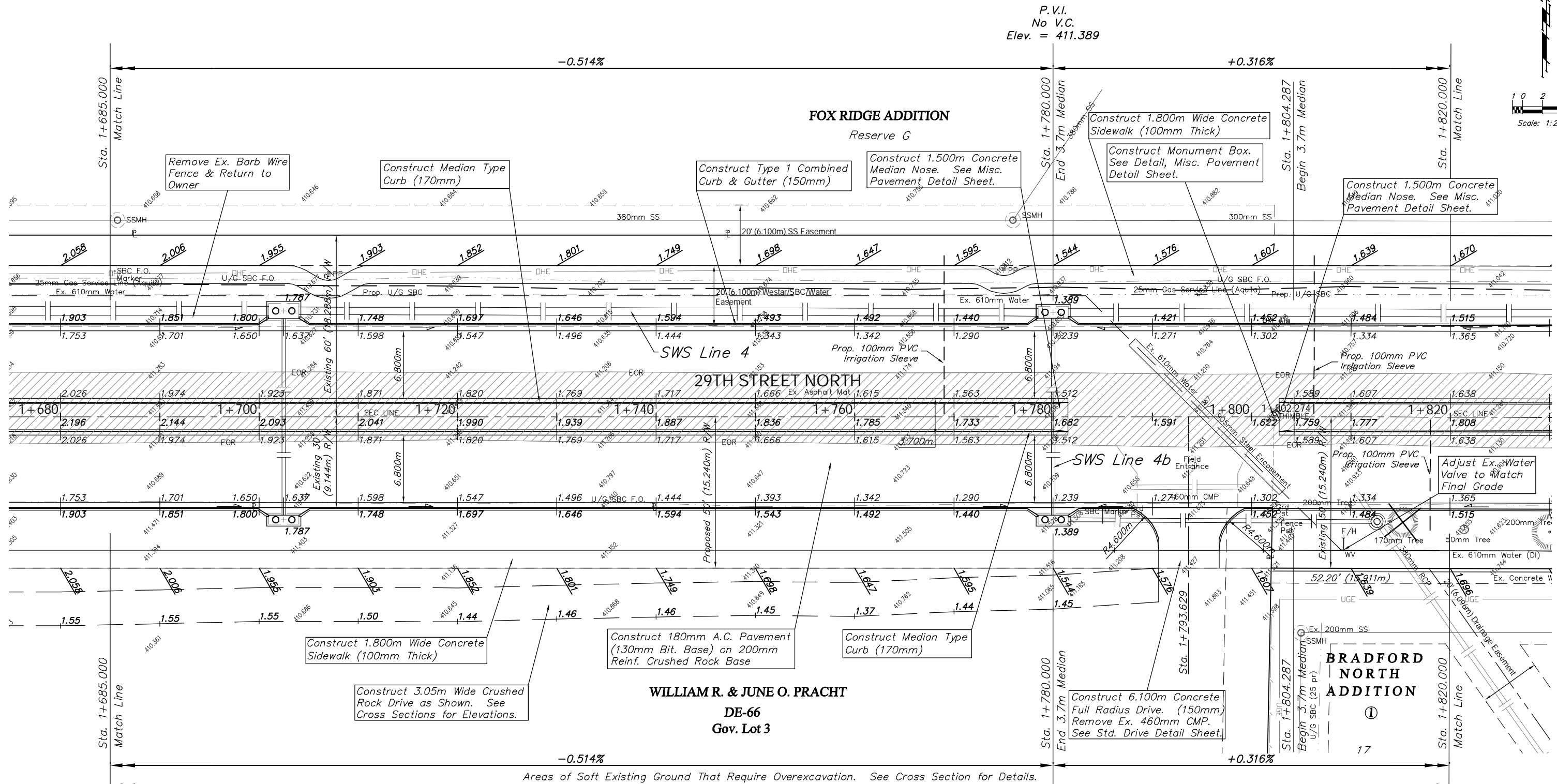


BENCHMARK:
 BM #1 - City of Wichita Disc Located .5 Mile East of
 Maize Road North of 29th Street North.
 Sta. 1+803.63, 9.61m Lt.
 Elev. 410.950 SI Units (1348.26 MSL)

FHWA REGION NO.	STATE	PROJECT NO.	FISCAL YEAR	SHEET NO.	TOTAL SHEETS
7	KANSAS	87 N-0294-01	2004	17	129



P.V.I.
 No V.C.
 Elev. = 411.389

P.V.I.
 No V.C.
 Elev. = 411.389

Note:
 Trees/Shrubs to be removed are marked thus:

Note:
 Pavement, Sidewalks, and Etc. To Be Removed Are Indicated By:

PROJECT NUMBER		SHEET NAME		ENGINEERING DIRECTORY	
472-83863		Pav06		F:\29th North\Earth\dwg	
DESIGN	DRAWN	APPROVED	DATE	SCALE	BAUGHMAN NO
TPV	TPV	JFB	Oct. 2004	Noted	02-02-E232

CAPITAL IMPROVEMENT PROJECT
29TH STREET NORTH PAVING
 Sta. 1+685.000 to Sta. 1+820.000

BAUGHMAN COMPANY, P.A.
 ENGINEERING, SURVEYING, & PLANNING
 316-262-7271 • 315 ELLIS • WICHITA, KANSAS 67211

SHEET
17
 OF
 129

