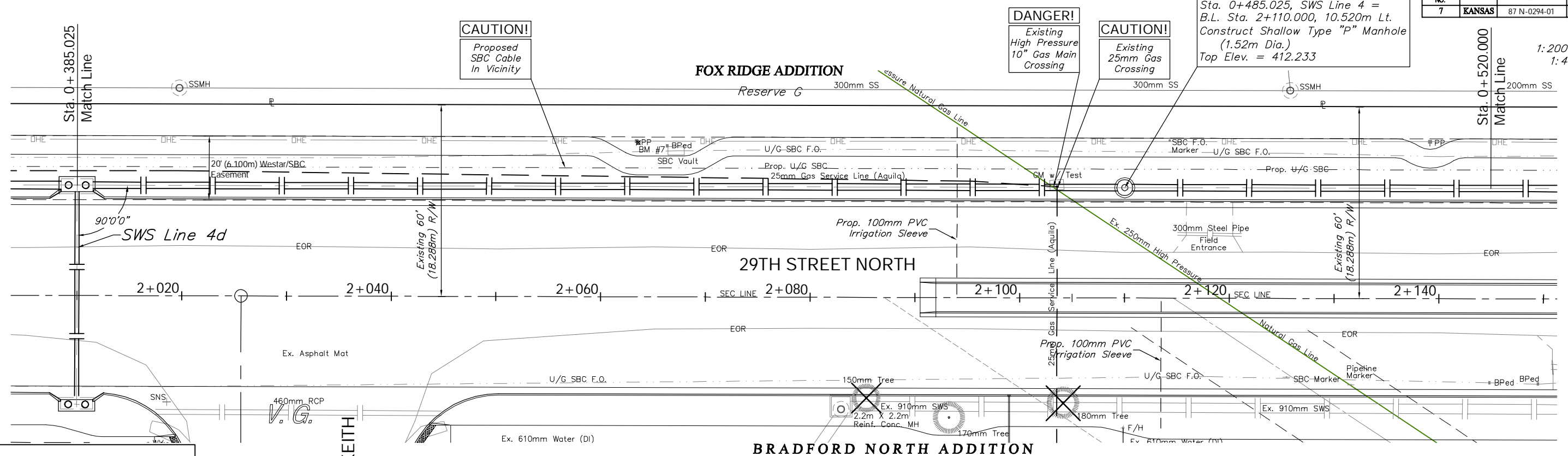
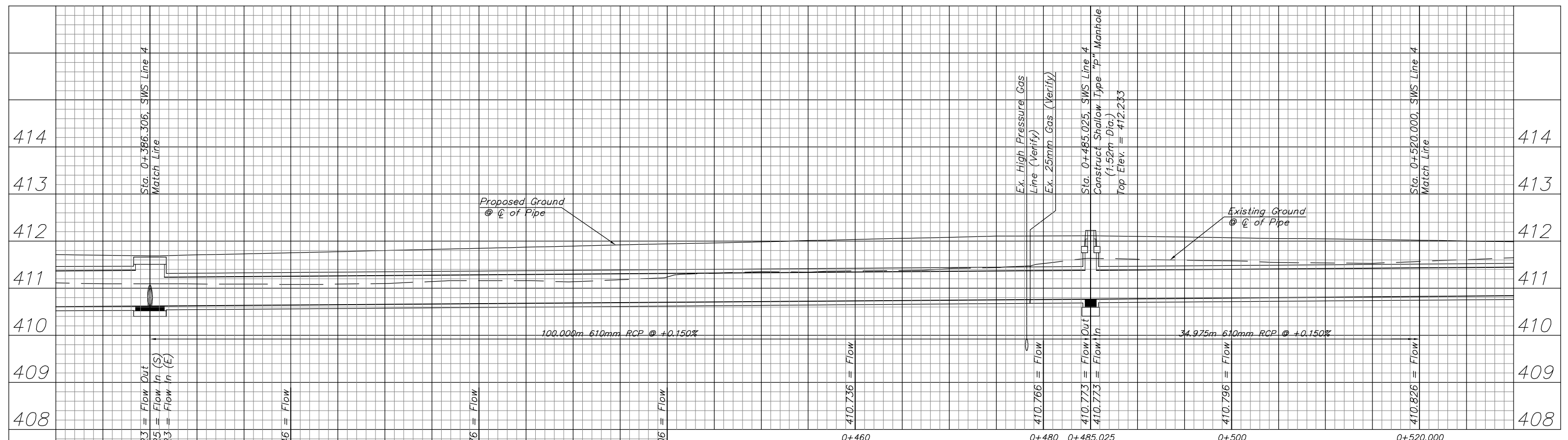


SCALE:  
1:200 HORIZONTAL  
1:40 VERTICAL



**BENCHMARK:**  
BM #7 - Small RR Spike in the South Face of the 1st Power Pole East of Keith on the North Side of 29th Street North.  
Sta. 2+063.40, 14.84m Lt.  
Elev. 411.437 SI Units (1349.86 MSL)



PROJECT NUMBER 472-83863		SHEET NAME SWS10		ENGINEERING DIRECTORY F:\29th North\Earth\dwg	
DESIGN TPV	DRAWN TPV	APPROVED JFB	DATE Oct. 2004	SCALE Noted	BAUGHMAN NO 02-02-E232

CAPITAL IMPROVEMENT PROJECT  
**29TH ST. NORTH SWS PLAN & PROFILE**  
SWS LINE 4 - Sta. 0+386.306 to Sta. 0+520.000

	<b>BAUGHMAN COMPANY, P.A.</b> ENGINEERING, SURVEYING, & PLANNING 316-262-7271 • 315 ELLIS • WICHITA, KANSAS 67211
--	---

SHEET  
OF  
129