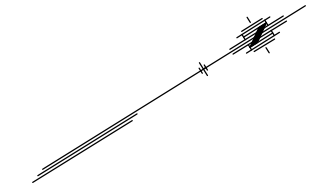


STATE	PROJECT NO.	YEAR	SHEET NO.	TOTAL SHEETS
KANSAS	87 N-0307-01	2006	16	89

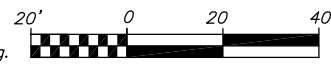
Note:

The Existing Concrete Pavement Jointing shown represents the best information obtainable for design. Joint locations and patterns have been drawn from visual examination and are not necessarily to scale. Mid-Panel Patch locations shall be field located. Proposed pavement repair patches and panel replacement dimensions shown are reliable.

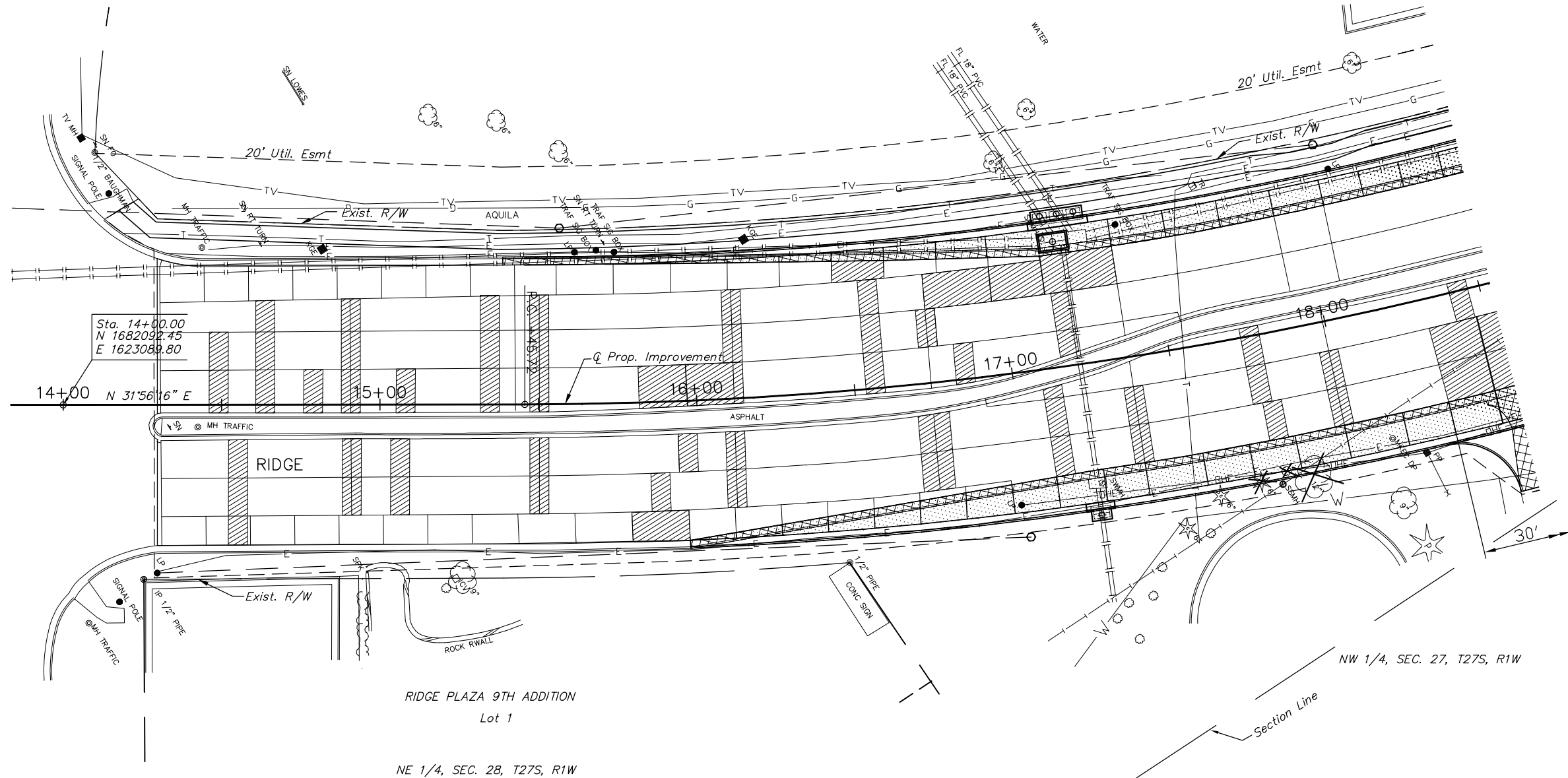
NE 1/4, SEC. 28, T27S, R1W
 LOWE'S ADDITION
 Lot 1








SCALE



PLAN: Lat. & Long.



LEGEND

-  Concrete Pavement Patch, Panel Replacement, Partial Panel Replacement, or Full-depth Joint Repair
-  Pavement/Sidewalk Removal
-  Concrete Widening
-  Existing Concrete Pavement Jointing
-  Proposed Concrete Pavement Jointing
-  Tree Removal

J:\Civil\03392\dwg\Repair\03392RP1.dwg 08/12/2005 04:50:31 PM CS

KANSAS DEPARTMENT OF TRANSPORTATION
 MAPLE & RIDGE INTERSECTION
 STA. 15+38.54 to STA. 18+50.00
 PROJECT NO. 87 N-0307-01 SEDGWICK CO.
 M K E C ENGINEERING CONSULTANT, INC.
 WICHITA, KANSAS

DESIGNED BY:	JRA	CHECKED BY:	
DRAWN BY:	DPG	DATE:	6-4-04