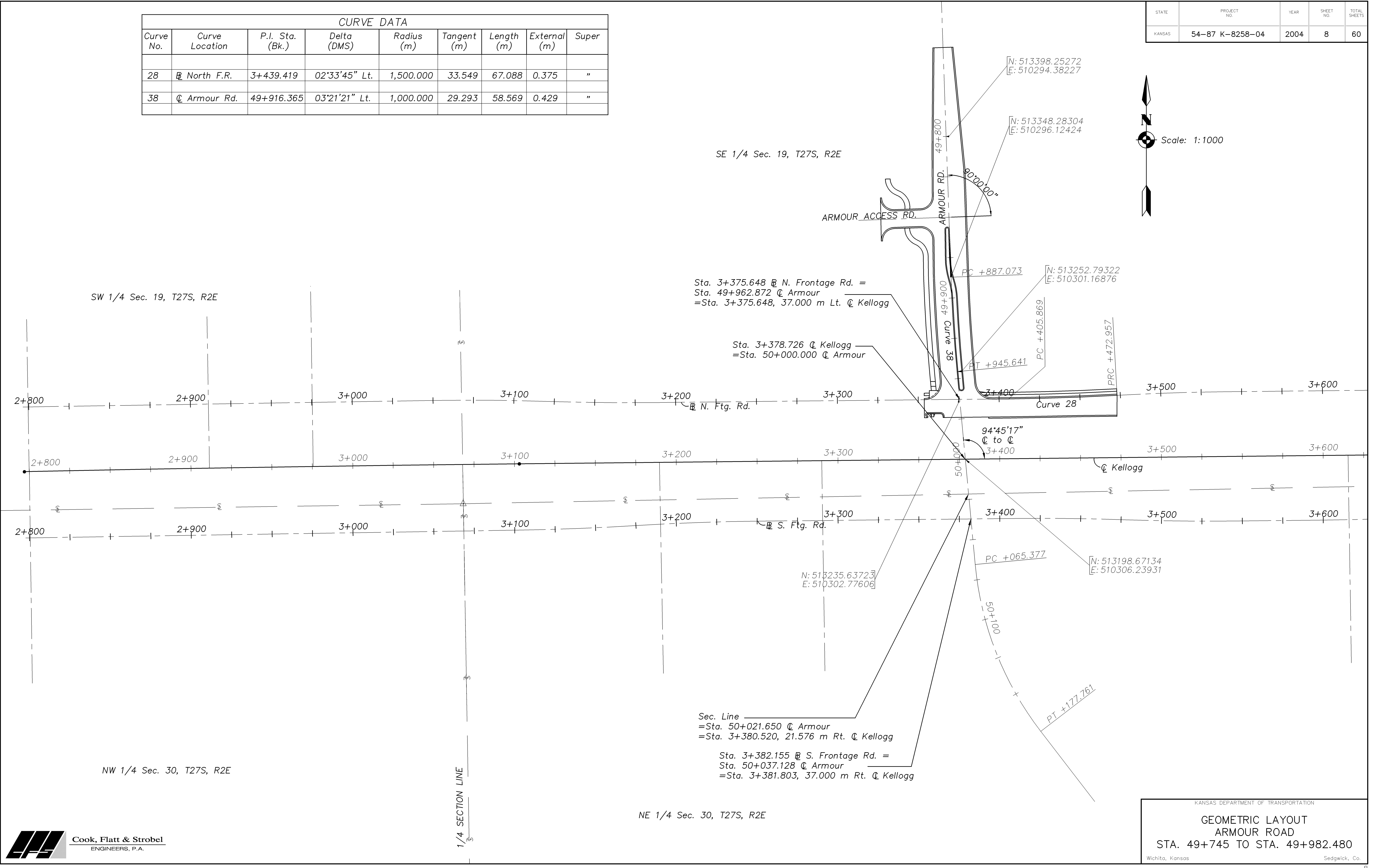
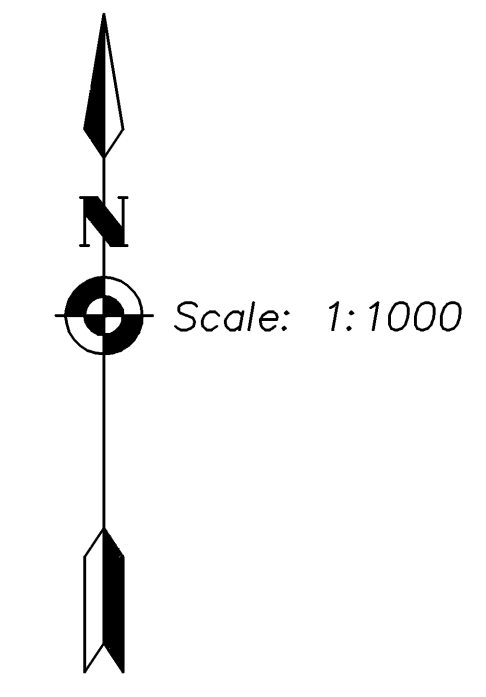


CURVE DATA								
Curve No.	Curve Location	P.I. Sta. (Bk.)	Delta (DMS)	Radius (m)	Tangent (m)	Length (m)	External (m)	Super
28	North F.R.	3+439.419	02°33'45" Lt.	1,500.000	33.549	67.088	0.375	"
38	Armour Rd.	49+916.365	03°21'21" Lt.	1,000.000	29.293	58.569	0.429	"

STATE	PROJECT NO.	YEAR	SHEET NO.	TOTAL SHEETS
KANSAS	54-87 K-8258-04	2004	8	60

DATE	BY	REFERENCE NOTED	REFERENCE CHECKED



Drawn by: []
 File: []
 Plotted: []
 SCALE: []



KANSAS DEPARTMENT OF TRANSPORTATION
GEOMETRIC LAYOUT
ARMOUR ROAD
STA. 49+745 TO STA. 49+982.480
 Wichita, Kansas Sedgwick, Co.