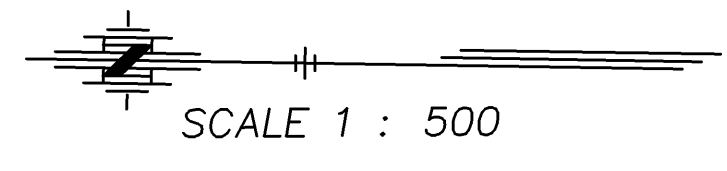


STATE	PROJECT NO.	YEAR	SHEET NO.	TOTAL SHEETS
KANSAS	54-87 K-8258-04	2004	45	60



DATE	BY

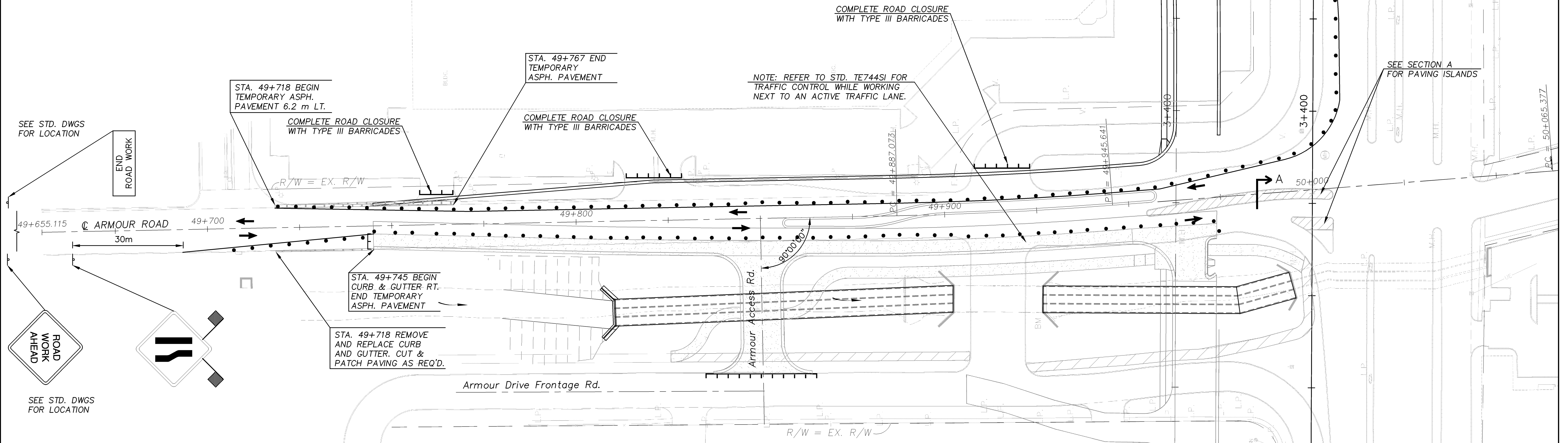
CONSTRUCTION SEQUENCE NORTH ARMOUR ROAD

PHASE I

- 1a. Construct 1200 Mm And 1050 Mm Storm Sewer From Existing Triple Rcb Across Existing Armour Road.
 - 1b. Construct Drainage Structures On West Side Of Armour Road.
 - 1c. Begin Utility Construction On East Side Of Armour Road.
 - 1d. Construct Temporary Strain Poles & Relocate Signal In Exist. Island. Temporarily Remove Existing Mast Arm And Pole. Remove Island And Construct Pavement At Island Location. See Section A. Shift Traffic On Armour To Provide One Lane Each Direction.
 - 1e. Begin Construction Of Base And Concrete Pavement For Western Lane Of Armour Road And Armour Access Road.
2. Complete Pavement For West Lane Of Armour Road And Armour Access Road.

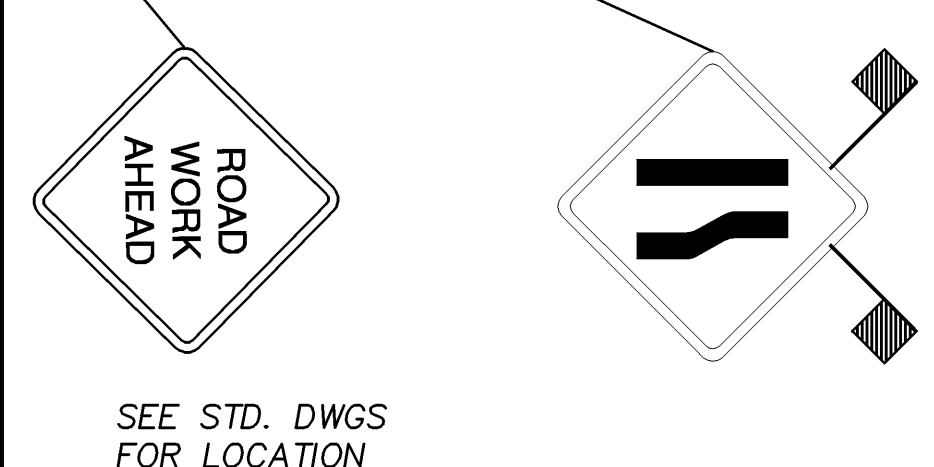
LEGEND

- TYPE III BARRICADE
- CONSTRUCTION AREA THIS PHASE
- EXISTING ISLANDS TO BE REMOVED
- TEMPORARY ASPHALT PAVEMENT



SEE STD. DWGS FOR LOCATION

END ROAD WORK



STA. 49+718 BEGIN TEMPORARY ASPH. PAVEMENT 6.2 m LT.

COMPLETE ROAD CLOSURE WITH TYPE III BARRICADES

STA. 49+767 END TEMPORARY ASPH. PAVEMENT

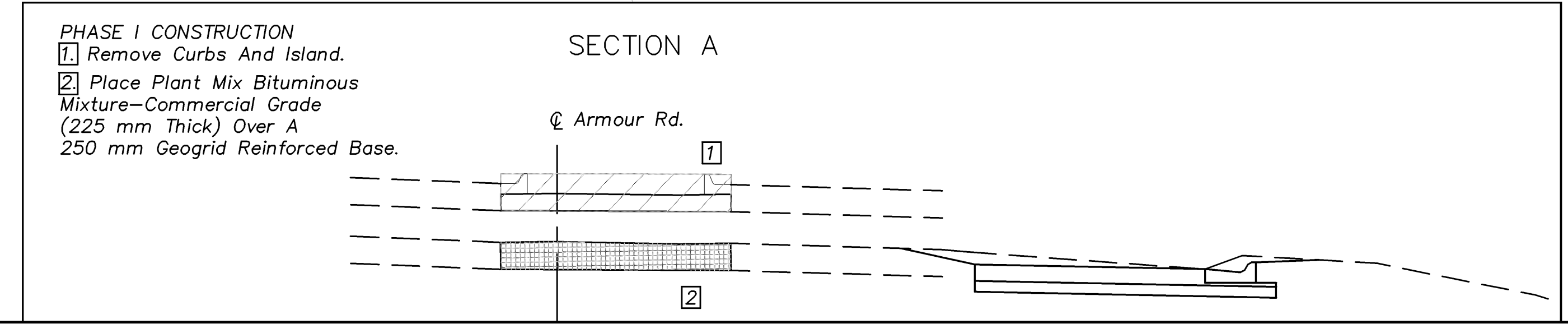
COMPLETE ROAD CLOSURE WITH TYPE III BARRICADES

STA. 49+745 BEGIN CURB & GUTTER RT. END TEMPORARY ASPH. PAVEMENT

STA. 49+718 REMOVE AND REPLACE CURB AND GUTTER. CUT & PATCH PAVING AS REQ'D.

NOTE: REFER TO STD. TE744SI FOR TRAFFIC CONTROL WHILE WORKING NEXT TO AN ACTIVE TRAFFIC LANE.

SEE SECTION A FOR PAVING ISLANDS



KANSAS DEPARTMENT OF TRANSPORTATION

TRAFFIC CONTROL PLAN
NORTH ARMOUR ROAD
PHASE I

Drawn by: [Blank]

Plotted: [Blank]

SCALE

