

STATE	PROJECT NO.	YEAR	SHEET NO.	TOTAL SHEETS
KANSAS	87 U-0306-01	2005	6	111

Block 3  
Oak Ridge Second Addition

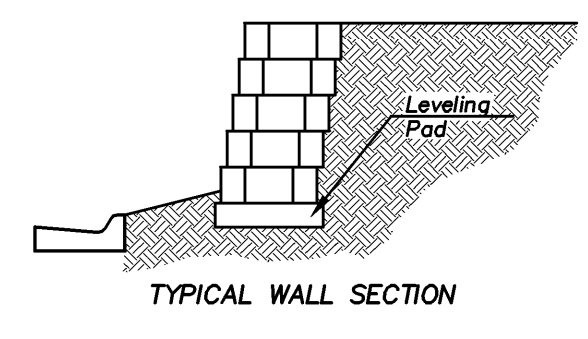
**NOTES**

THE INTERLOCKING BLOCK CONCRETE STONE RETAINING WALL SHALL BE "MESA SYSTEM" OR APPROVED EQUAL. THE CONTRACTOR IS RESPONSIBLE FOR DESIGN OF RETAINING WALL AND SHALL SUBMIT THE FINAL WALL DESIGN WITH REINFORCEMENT FOR REVIEW ONLY BY THE ENGINEER PRIOR TO BEGINNING CONSTRUCTION.

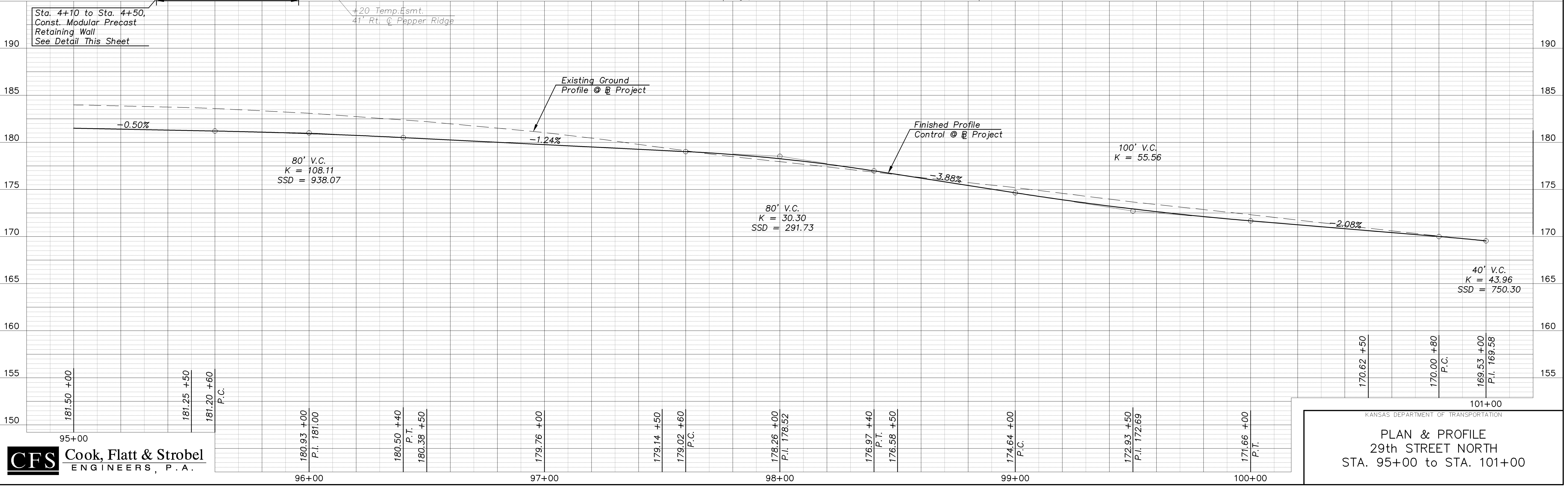
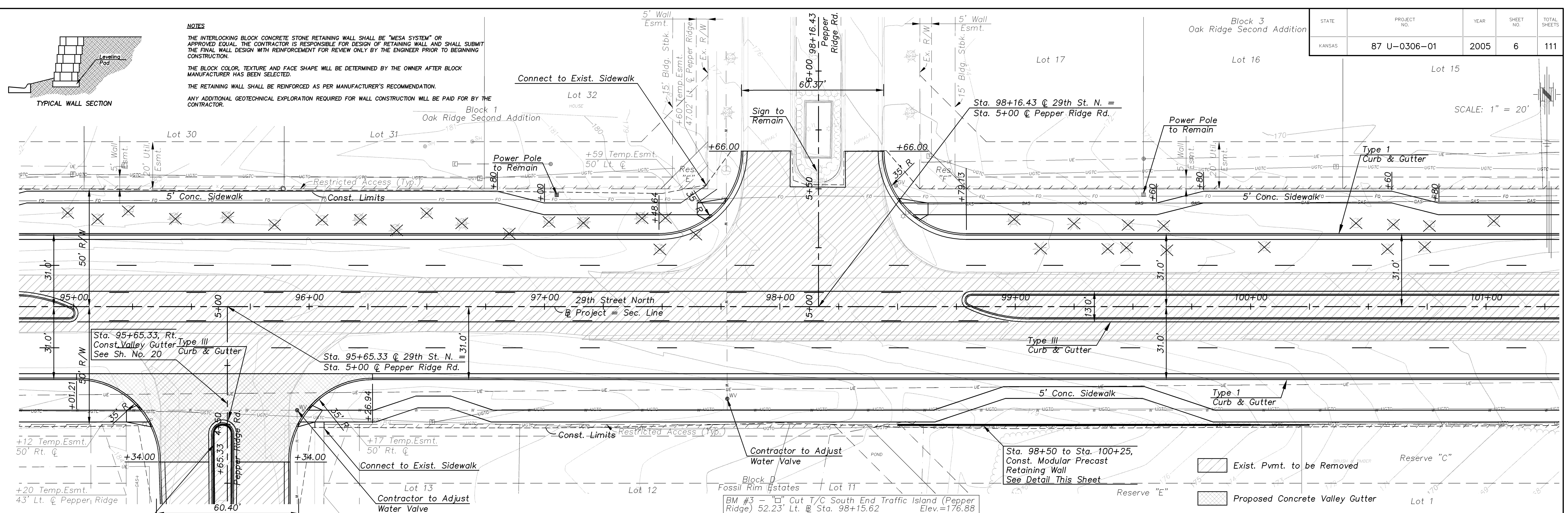
THE BLOCK COLOR, TEXTURE AND FACE SHAPE WILL BE DETERMINED BY THE OWNER AFTER BLOCK MANUFACTURER HAS BEEN SELECTED.

THE RETAINING WALL SHALL BE REINFORCED AS PER MANUFACTURER'S RECOMMENDATION.

ANY ADDITIONAL GEOTECHNICAL EXPLORATION REQUIRED FOR WALL CONSTRUCTION WILL BE PAID FOR BY THE CONTRACTOR.



DATE: \_\_\_\_\_ BY: \_\_\_\_\_  
 DATE: \_\_\_\_\_ BY: \_\_\_\_\_  
 DATE: \_\_\_\_\_ BY: \_\_\_\_\_  
 DATE: \_\_\_\_\_ BY: \_\_\_\_\_



KANSAS DEPARTMENT OF TRANSPORTATION

**PLAN & PROFILE**  
 29th STREET NORTH  
 STA. 95+00 to STA. 101+00