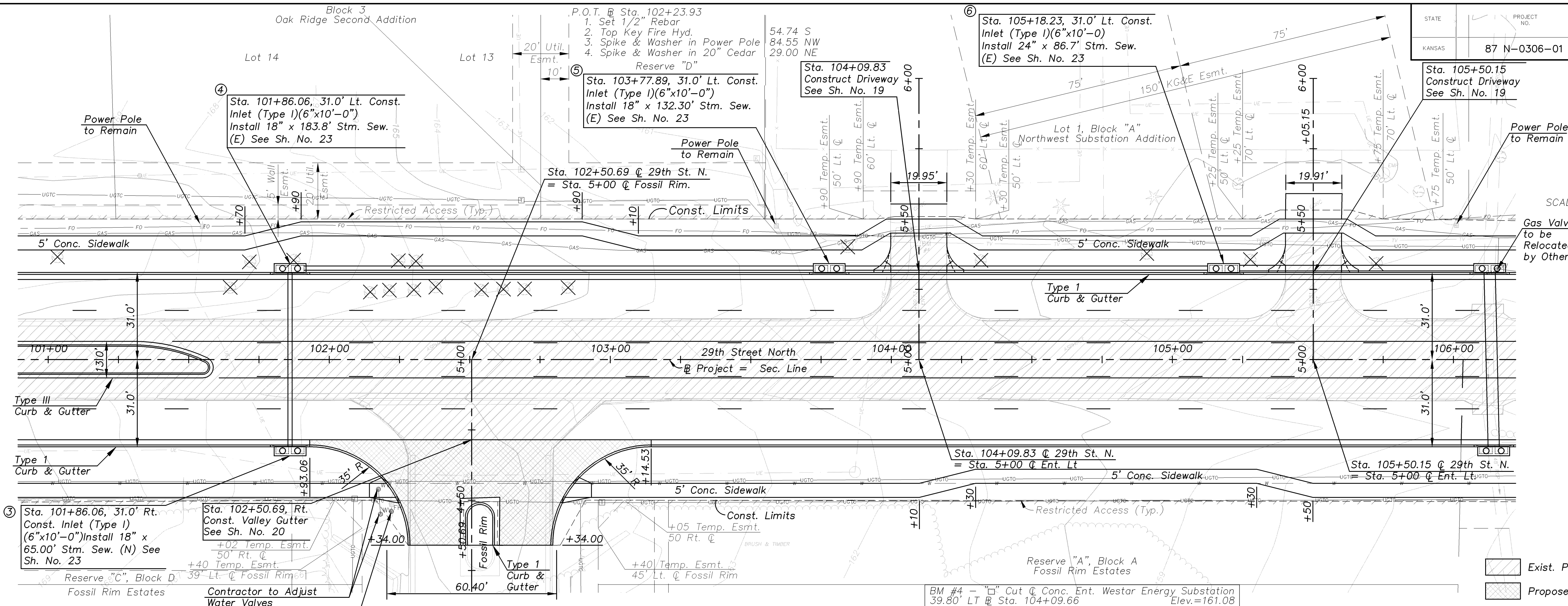


STATE	PROJECT NO.	YEAR	SHEET NO.	TOTAL SHEETS
KANSAS	87 N-0306-01	2005	7	111

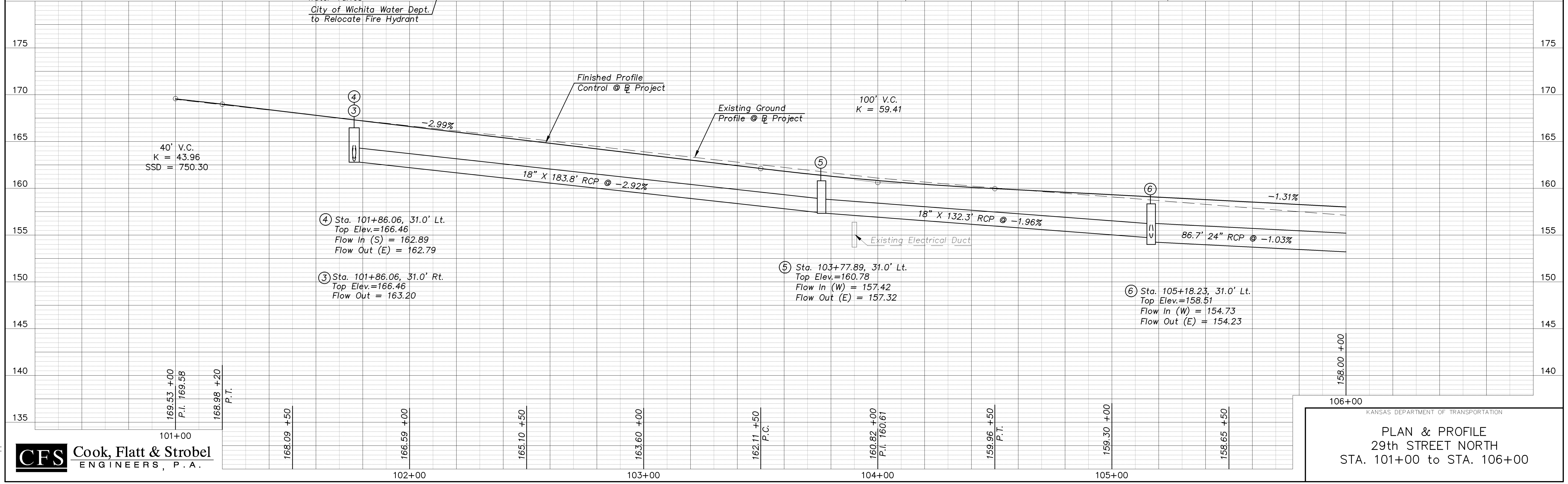
DATE	BY	REVISION

DATE	BY	REVISION



SCALE: 1" = 20'

Exist. Pvmnt. to be Removed
Proposed Concrete Valley Gutter



KANSAS DEPARTMENT OF TRANSPORTATION
PLAN & PROFILE
29th STREET NORTH
STA. 101+00 to STA. 106+00