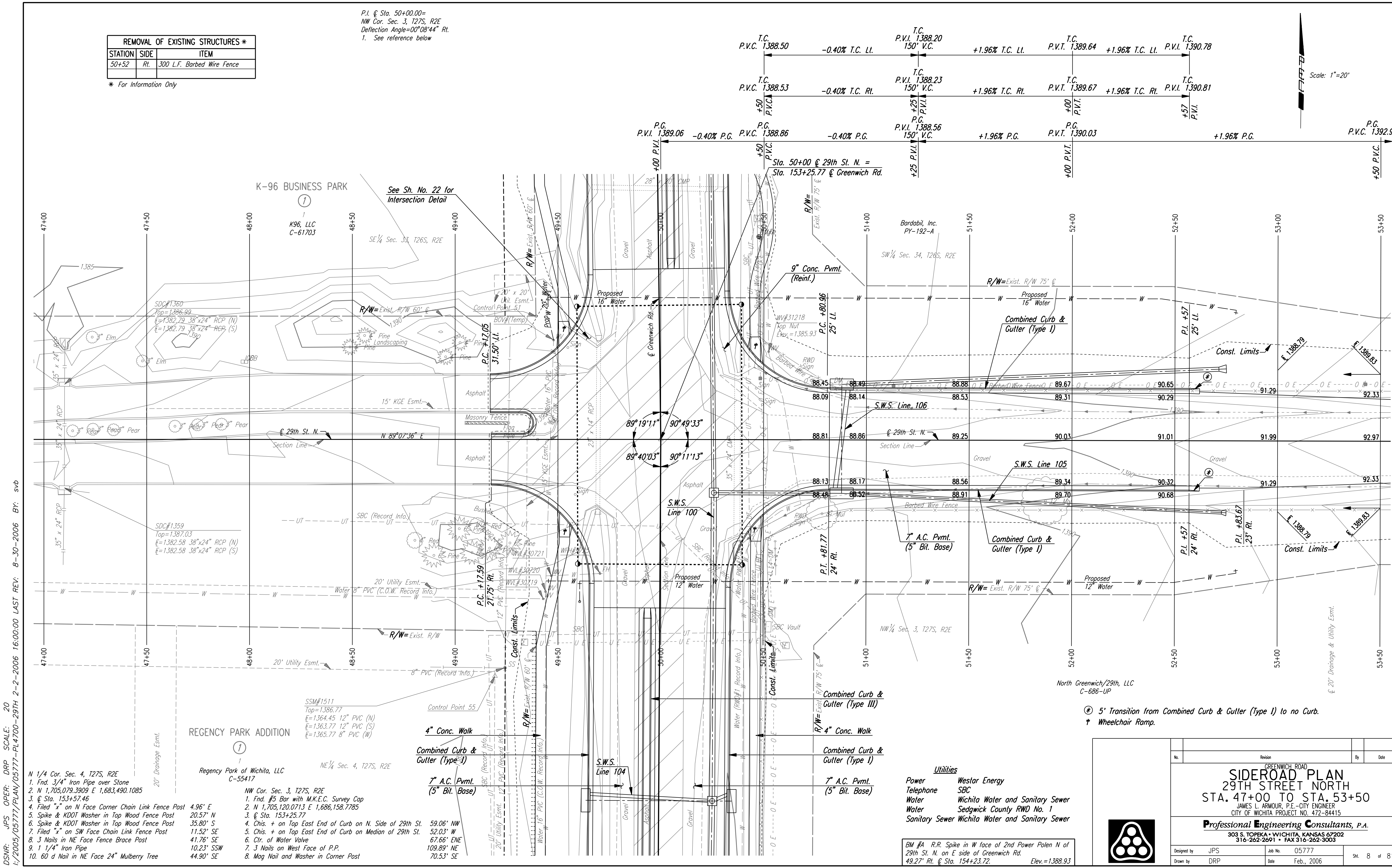


REMOVAL OF EXISTING STRUCTURES *		
STATION	SIDE	ITEM
50+52	Rt.	300 L.F. Barbed Wire Fence

* For Information Only

P.I. @ Sta. 50+00.00 =
 NW Cor. Sec. 3, T27S, R2E
 Deflection Angle = 00° 08' 44" Rt.
 1. See reference below

Scale: 1" = 20'



DSNR: JPS OPER: DRP SCALE: 20
 1/2005/05777/PLAN/05777-PL4700-29TH 2-2-2006 16:00:00 LAST REV: 8-30-2006 BY: svb

- N 1/4 Cor. Sec. 4, T27S, R2E
1. Fnd. 3/4" Iron Pipe over Stone
 2. N 1,705,079.3909 E 1,683,490.1085
 3. @ Sta. 153+57.46
 4. Filled "x" on N Face Corner Chain Link Fence Post 4.96' E
 5. Spike & KDOT Washer in Top Wood Fence Post 20.57' N
 6. Spike & KDOT Washer in Top Wood Fence Post 35.80' S
 7. Filled "x" on SW Face Chain Link Fence Post 11.52' SE
 8. 3 Nails in NE Face Fence Brace Post 41.76' SE
 9. 1 1/4" Iron Pipe 10.23' SSW
 10. 60 d Nail in NE Face 24" Mulberry Tree 44.90' SE

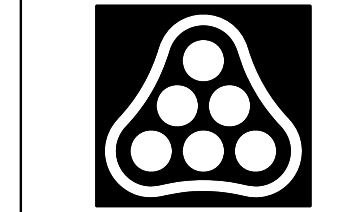
REGENCY PARK ADDITION
 Regency Park of Wichita, LLC
 C-55417

- SSM#1511
 Top=1386.77
 E=1364.45 12" PVC (N)
 E=1363.77 12" PVC (S)
 E=1365.77 8" PVC (W)
- NE 1/4 Sec. 4, T27S, R2E
- NW Cor. Sec. 3, T27S, R2E
1. Fnd. #5 Bar with M.K.E.C. Survey Cap
 2. N 1,705,120.0713 E 1,686,158.7785
 3. @ Sta. 153+25.77
 4. Chis. + on Top East End of Curb on N. Side of 29th St. 59.06' NW
 5. Chis. + on Top East End of Curb on Median of 29th St. 52.03' W
 6. Ctr. of Water Valve 67.66' NE
 7. 3 Nails on West Face of P.P. 109.89' NE
 8. Mag Nail and Washer in Corner Post 70.53' SE

- Utilities**
- Power Westar Energy
 - Telephone SBC
 - Water Wichita Water and Sanitary Sewer
 - Water Sedgwick County RWD No. 1
 - Sanitary Sewer Wichita Water and Sanitary Sewer

BM #A R.R. Spike in W face of 2nd Power Pole N of 29th St. N. on E side of Greenwich Rd. 49.27' Rt. @ Sta. 154+23.72. Elev.=1388.93

⊕ 5' Transition from Combined Curb & Gutter (Type I) to no Curb.
 † Wheelchair Ramp.



No.	Revision	By	Date

GREENWICH ROAD
SIDEROAD PLAN
29TH STREET NORTH
STA. 47+00 TO STA. 53+50
 JAMES L. ARMOUR, P.E. - CITY ENGINEER
 CITY OF WICHITA PROJECT NO. 472-84415
Professional Engineering Consultants, P.A.
 303 S. TOPEKA • WICHITA, KANSAS 67202
 316-262-2691 • FAX 316-262-3003

Designed by	JPS	Job No.	05777
Drawn by	DRP	Date	Feb., 2006

Sht. 8 of 81