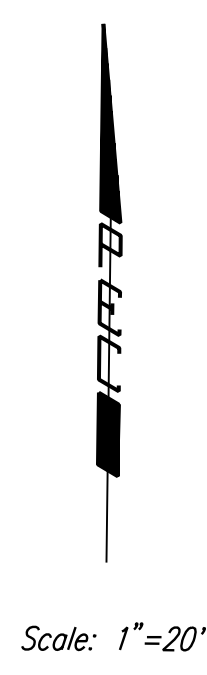
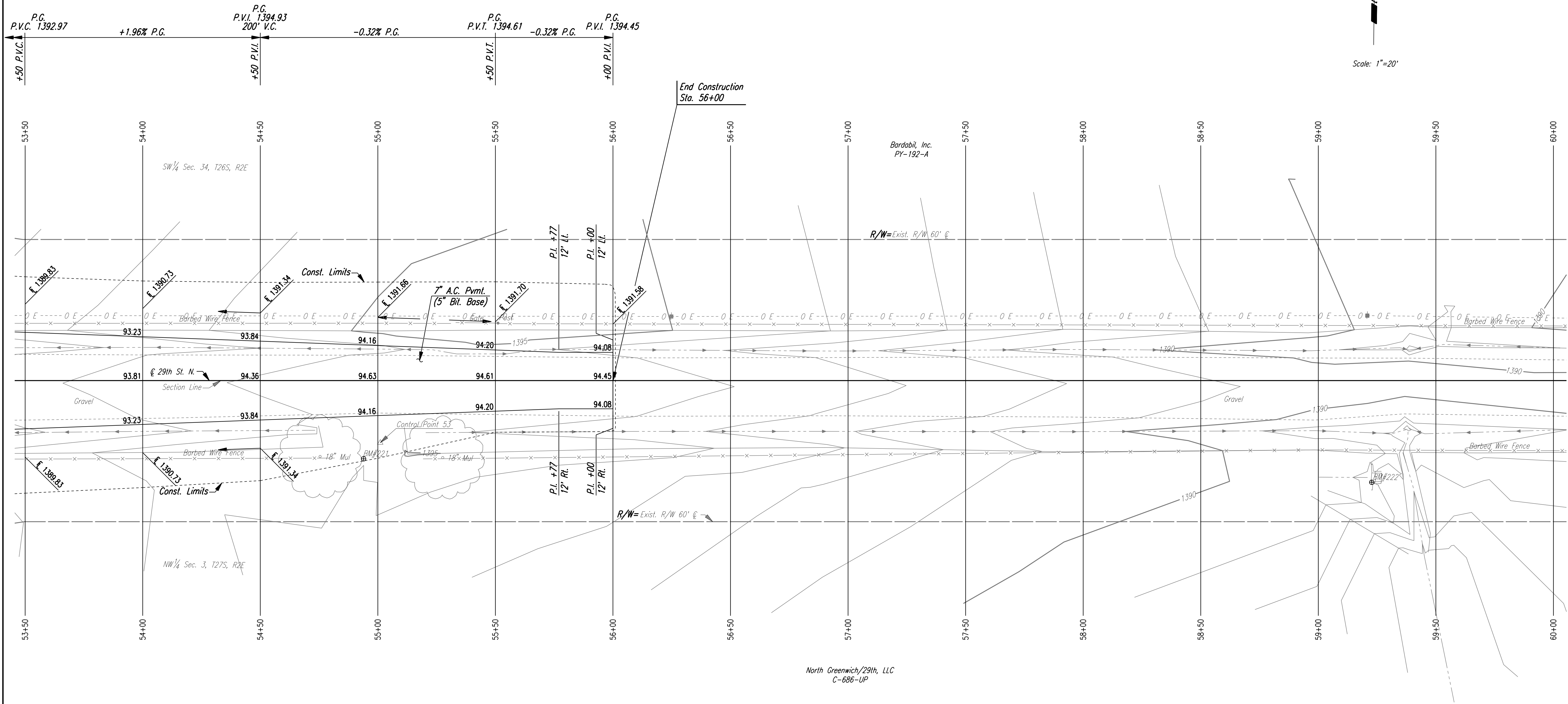


DSNR: JPS OPER: DRP SCALE: 20  
 1/2005/05777/PLAN/05777-PL5350-29TH 2-2-2006 16:00:00 LAST REV: 8-30-2006 BY: svb



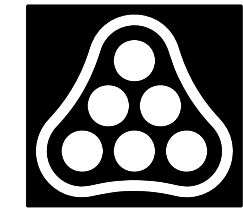
REMOVAL OF EXISTING STRUCTURES *		
STATION	SIDE	ITEM
53+50	Rt.	1.35 L.F. Barbed Wire Fence

\* For Information Only

- N 1/4 Cor. Sec. 3, T27S, R2E
1. Fnd. 5/8" Bar
  2. N 1,705,153.6736 E 1,688,803.6391
  3. @ Sta. 153+25.77
  4. 3 Nails in Fence Post
  5. Spike in Top of Fence Post
  6. 3 Nails in S Face of W Gate Post
  7. 3 Nails in Corner Fence Post
  8. Hilti Nail & Washer in Power Pole
- 27.00' S  
 34.83' SW  
 34.75' NW  
 25.02' N  
 27.73' N

BM #221 "I" post on w side of field Ent. S side of  
 29th St. N., 760' E of Greenwich Rd.  
 33.27' Rt. S/R Sta. 54+93.94 Elev.=1394.42

BM #222 Chis. "a" on N end of S wall of conc. Soil  
 Saver on S side of 29th St. N., 925' E of Greenwich Rd.  
 43.25' Rt. S/R Sta. 59+22.73 Elev.=1389.59



No.	Revision	By	Date
<b>GREENWICH ROAD</b> <b>SIDEROAD PLAN</b> <b>29TH STREET NORTH</b> <b>STA. 53+50 TO STA. 56+00</b> JAMES L. ARMOUR, P.E. - CITY ENGINEER CITY OF WICHITA PROJECT NO. 472-84415			
<b>Professional Engineering Consultants, P.A.</b> 303 S. TOPEKA • WICHITA, KANSAS 67202 316-262-2691 • FAX 316-262-3003			
Designed by	JPS	Job No.	05777
Drawn by	DRP	Date	Feb., 2006
			SH. 9 of 81