

STATE OF KANSAS
CITY OF WICHITA

Federal Aid Project

KANSAS DEPARTMENT OF TRANSPORTATION PROJECT NUMBER 87 N-0247-01
OLIVER STREET OVER GYPSUM CREEK

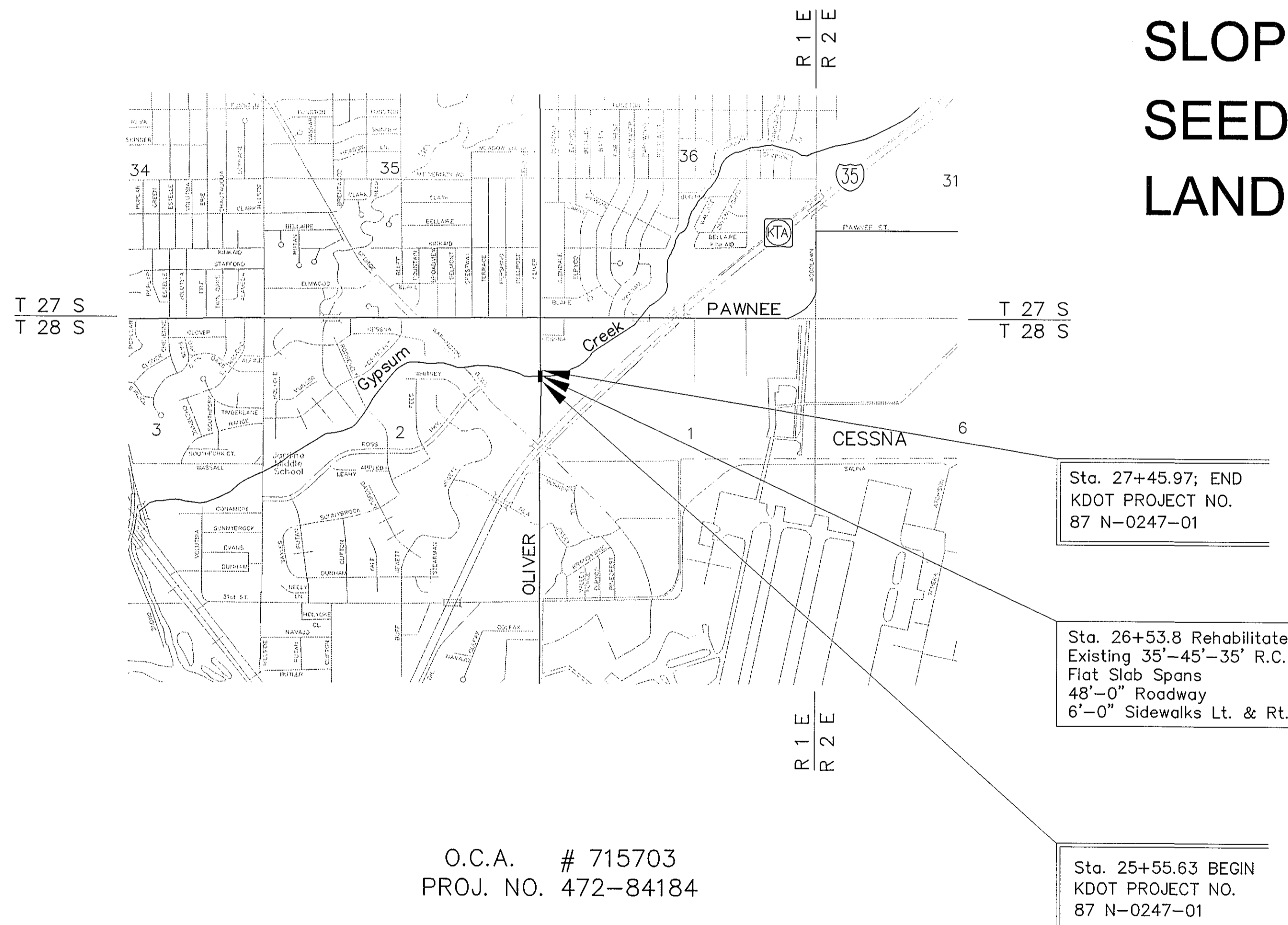
2000 TRAFFIC CENSUS 15,823 VEHICLES PER DAY
DESIGN SPEED 35 mph

- BRIDGE REHABILITATION
- BRIDGE APPROACH PAVEMENT
- GABIONS
- SLOPE PROTECTION
- SEEDING & SODDING
- LANDSCAPING

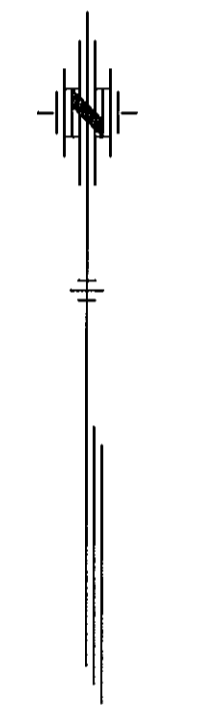
State	PROJECT No.	Year	Sheet No.	Total Sheets
Kansas	87 N-0247-01	2005	1	48
BHM-N024(701)				

INDEX OF SHEETS

- 1 TITLE SHEET
- 2 TYPICAL SECTIONS
- 3-4 PLAN & PROFILE SHEETS
- 5-11 PAVEMENT DETAILS
- 12 CONTOUR MAP
- 13 CONSTRUCTION LAYOUT
- 14-17 BRIDGE DETAILS
- 18 STANDARD PILE DETAILS
- 19 BRIDGE EXCAVATION
- 20 SUPPORTS & SPACERS FOR REINFORCING STEEL
- 21 SUMMARY OF QUANTITIES
- 22-28 WATER POLLUTION CONTROL
- 29 SEEDING DETAILS
- 30 LANDSCAPING
- 31-32 PAVEMENT MARKING DETAILS
- 33-44 TRAFFIC CONTROL PLAN
- 45-48 CROSS SECTIONS



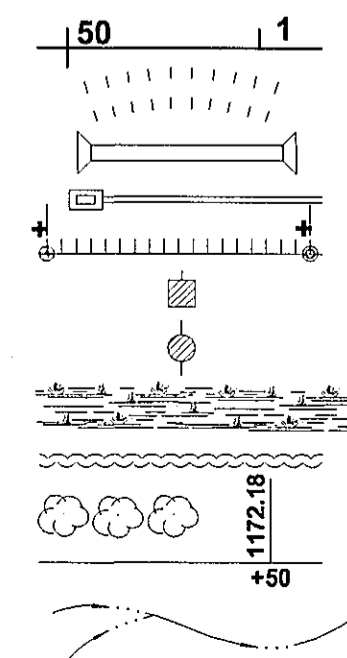
O.C.A. # 715703
PROJ. NO. 472-84184



Not to scale

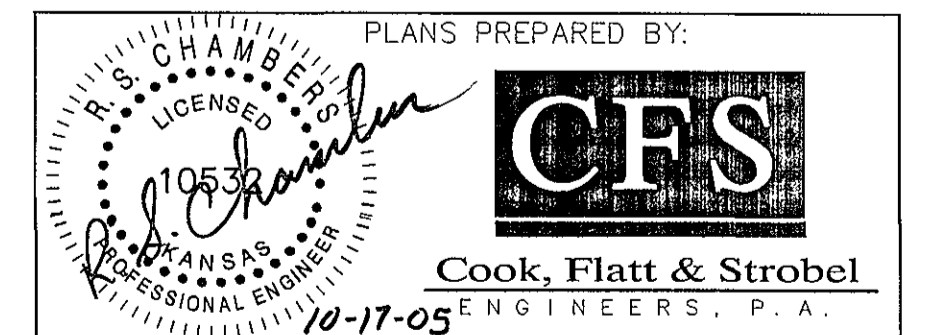
CONVENTIONAL SIGNS

COUNTY LINE	-----	CENTER LINE OF PROJECT
CITY LIMITS	-----	TERRACE
STATE OR NATIONAL LINE	-----	CULVERTS
TOWNSHIP, SECTION or GRANT LINE	-----	DROP INLET & STORM SEWER
PROPERTY LINE	-----	ACCESS CONTROL
HIGHWAY FENCE	-----	POWER POLE
EXISTING FENCE	-----	TELEPHONE POLE
GUARD FENCE	-----	MARSH
CONSTRUCTION LIMITS	-----	HEDGE
RIGHT OF WAY LINE	-----	TREES
TRAVELED WAY	-----	PROFILE ELEVATION
RAILROADS	-----	STREAM or CREEK



GROSS LENGTH OF PROJECT	190.34	FT.
EXCEPTIONS		FT.
NET LENGTH OF PROJECT	190.34	FT. = 0.036 MI.
NET LENGTH OF BRIDGES	117.50	FT. = 0.022 MI.
NET LENGTH OF ROAD	72.84	FT. = 0.014 MI.

Note: Traffic shall be carried through construction. See Traffic Control Plan. The Contractor may work on both sides of the bridge simultaneously.



APPROVED : _____
ACTING CITY ENGINEER
DATE _____ 2005