

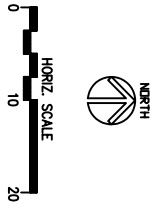
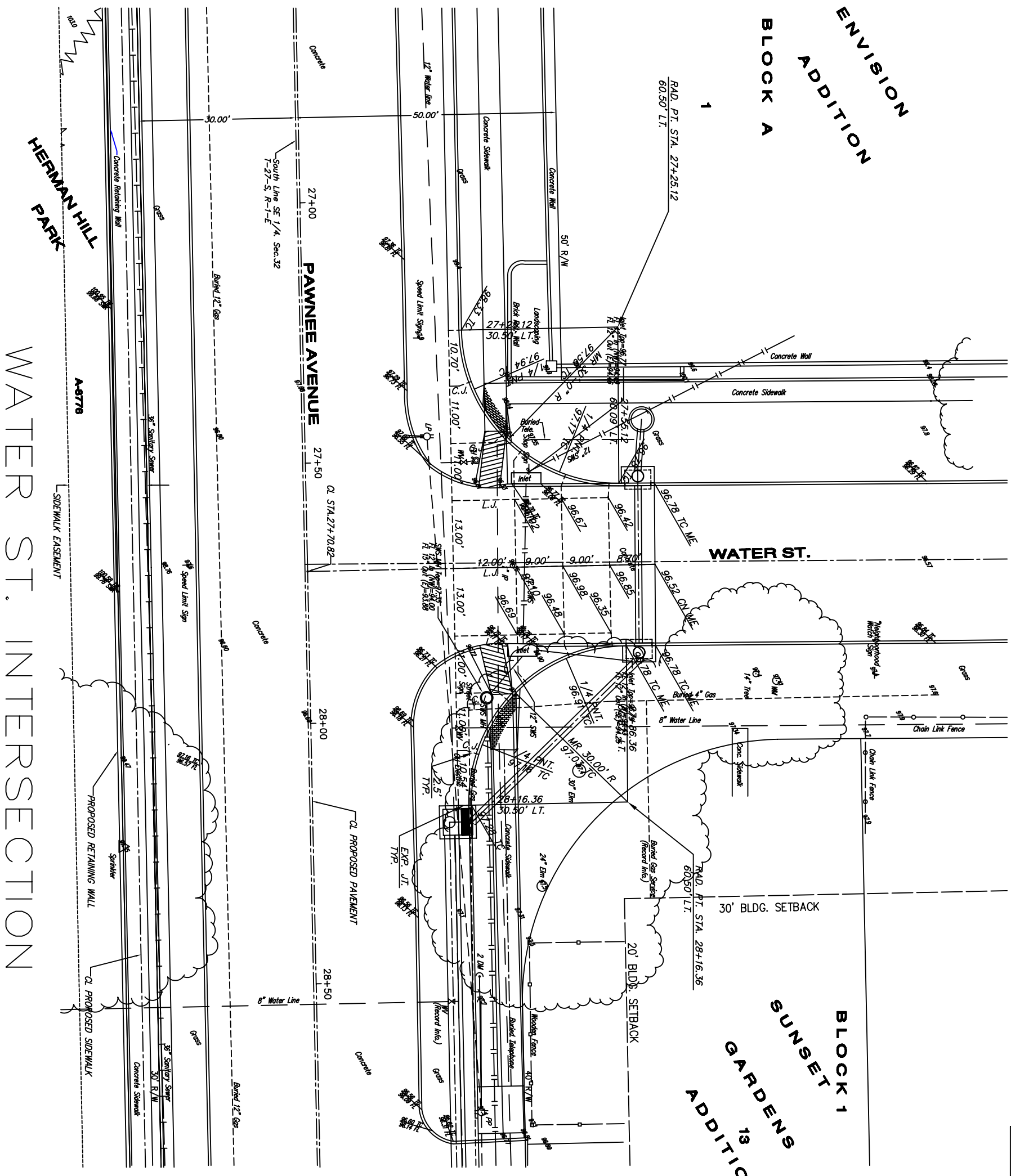
COUNTY	STATE	PROJECT NUMBER	FISCAL YEAR	SHEET NO.	TOTAL SHEETS
KANSAS	KANSAS	87 N-0237-01	2006	13	78

ENVISION
ADDITION

BLOCK A

1

BLOCK 1
SUNSET
GARDENS
ADDITION



- LEGEND:**
- (LP) = LOW POINT
 - (HP) = HIGH POINT
 - (PC) = POINT OF CURVATURE
 - (PT) = POINT OF TANGENCY
 - TC = TOP OF CURB
 - CN = CROWN
 - FL = FLOWLINE
 - ME = MATCH EXISTING ELEVATION

NOTES:
1. UNLESS OTHERWISE INDICATED, DIMENSIONS ARE MEASURED TO BACK OF CURB.

BENCHMARK:
* "C" IN TOP OF CURB ON NORTH SIDE OF SWS INLET, AT THE NW CORNER OF WATER STREET AND PAWNEE AVENUE.
ELEV. = 98.77 CITY DATUM

Scale: as noted
drawn by: dds
checked by: cry
date: Mar. 2006
P/N: 04-179
Revisions:
Sheet No. 13 of 78

**INTERSECTION DETAILS
(PAWNEE AVENUE & WATER STREET)**

Paving & Storm Sewer Improvements
City of Wichita
Sedgwick County, Kansas

YOUNG & ASSOCIATES, P.A.
Civil and Environmental Engineers

100 S. Georgie, Derby, KS 67037
Tel: (316)788-2552
Fax: (316)788-4408

Copyright 2006, by Young & Associates, P.A. All rights reserved. Reproduction in any form without the specific written permission of Young & Associates, P.A. is prohibited. This plan and contract are the property of Young & Associates, P.A. the delivery of the contract or copies hereof does not constitute full contract release.