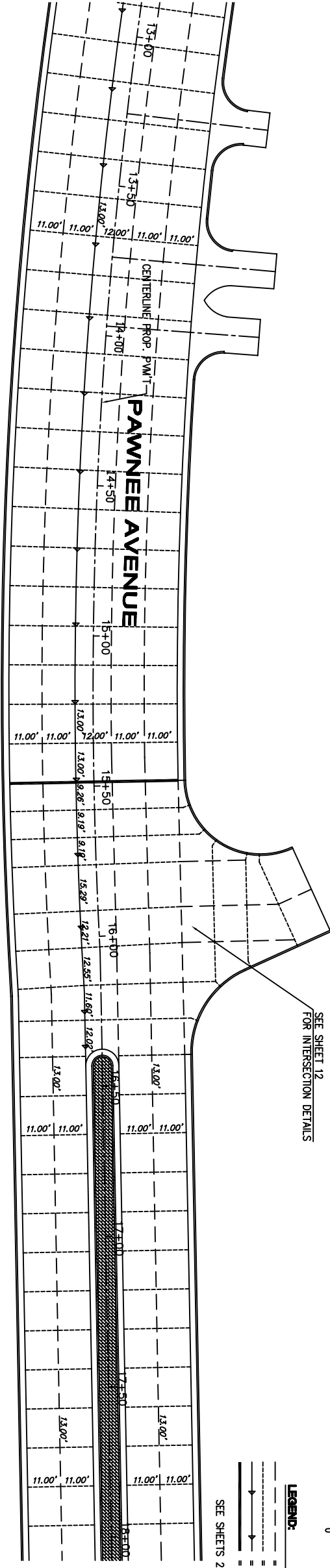
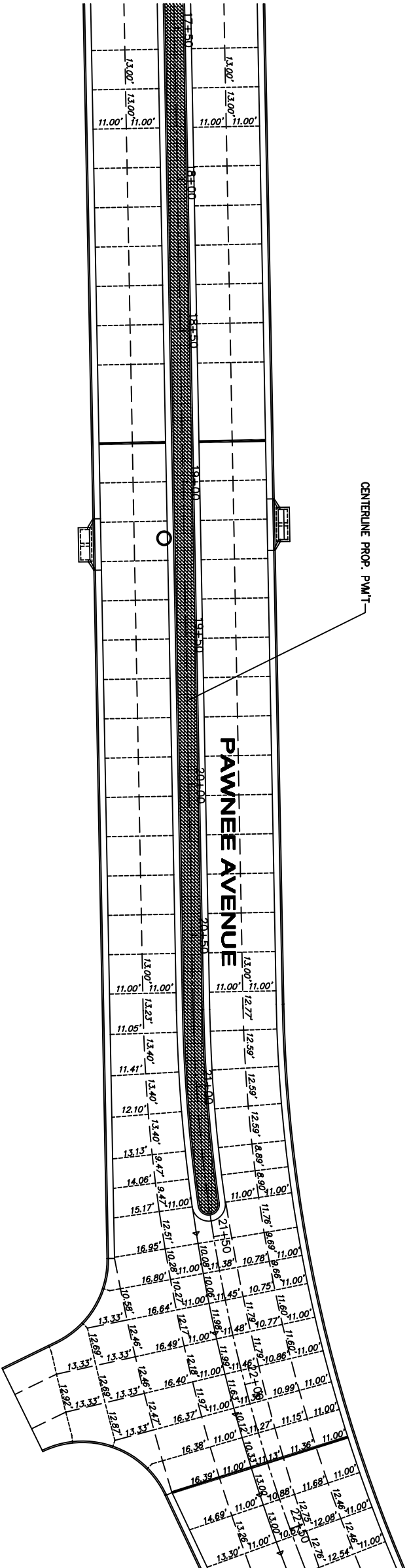


COUNTY	STATE	PROJECT NUMBER	FISCAL YEAR	SHEET NO.	TOTAL SHEETS
SEDGWICK	KANSAS	87 N-0237-01	2006	17	78

PALISADE



PAWNEE AVENUE - STA. 13+50 - 19+00



PAWNEE AVENUE - STA. 19+00 - 22+50

YOUNG & ASSOCIATES, P.A.
Civil and Environmental Engineers
100 S. Georgie, Derby, KS 67037
Tel: (316)788-2552
Fax: (316)788-4408

REINF. CONCRETE PAVEMENT JOINT PLAN
(CL STA. 13+50.00 TO BL STA. 22+50.00)
Paving & Storm Sewer Improvements
City of Wichita
Sedgwick County, Kansas

Scale: as noted
drawn by: dds
checked by: cry
date: Mar. 2006
P/N: 04-179
Revisions:

Sheet No.
17 of 78

Copyright 2006, by Young & Associates, P.A. All rights reserved. Reproduction in any form without the specific written permission of Young & Associates, P.A. is prohibited. This plan and contract is the property of Young & Associates, P.A. the delivery of the contract or copies hereof does not constitute publication hereof.