

Utility Owners
 Cox Communications
 Engineering Dept.
 801 E. Douglas
 Wichita, KS 67202
 Marc Henderson 262-4270, Ext. 745
 Mark Anaya 262-4270, Ext. 743
 Fax 262-4353

Westar Energy
 1900 E. Central (3rd Floor)
 P.O. Box 208
 Wichita, KS 67214
 Randy Truitt Office 261-6512
 Randy Truitt Mobile 258-4234
 Fax 261-6423

SBC
 Wichita Central Unit
 154 N. Broadway, Rm. 210
 Wichita, KS 67202
 Jim Toben 268-2759
 Fax 268-3110

Kansas Gas Service
 1021 E. 26th St. N.
 Wichita, KS 67219
 Charlene Pint 832-3121
 Fax 831-5670

Wichita Water & Sewer Department
 8th Floor - City Hall
 455 N. Main
 Wichita, KS 67202
 Bill Perkins or Paul Bryant 268-4555
 Fax 268-4514

Butler County RWD #5
 PO Box 56
 Benton, KS 67017
 Pat Shaffer 778-1631

Sedgwick County RWD #1
 PO Box 580
 Kechi, KS 67067
 Donna Burk 744-3713

Coffeyville Resources Crude Transportation
 (formerly Farmland)
 P.O. Box 3516
 411 NE Washington Blvd.
 Bartlesville, OK 74006
 Bill Edens (918) 333-4111, Ext. 333
 Fax (918) 333-4173

KANEB Pipe Line Co.
 7340 W. 21st Street North, Suite 200
 Wichita, KS 67205
 Dale Smith 773-9000
 Fax 773-9005

The Wichita Airport Authority
 Administration Building
 2173 Air Cargo Road
 Wichita, KS 67209
 Don Dearmont 946-4715
 Fax 946-1898

NE 1/4 Sec. 16, T27S, R2E

Greenwich Rd. N1°03'37"W

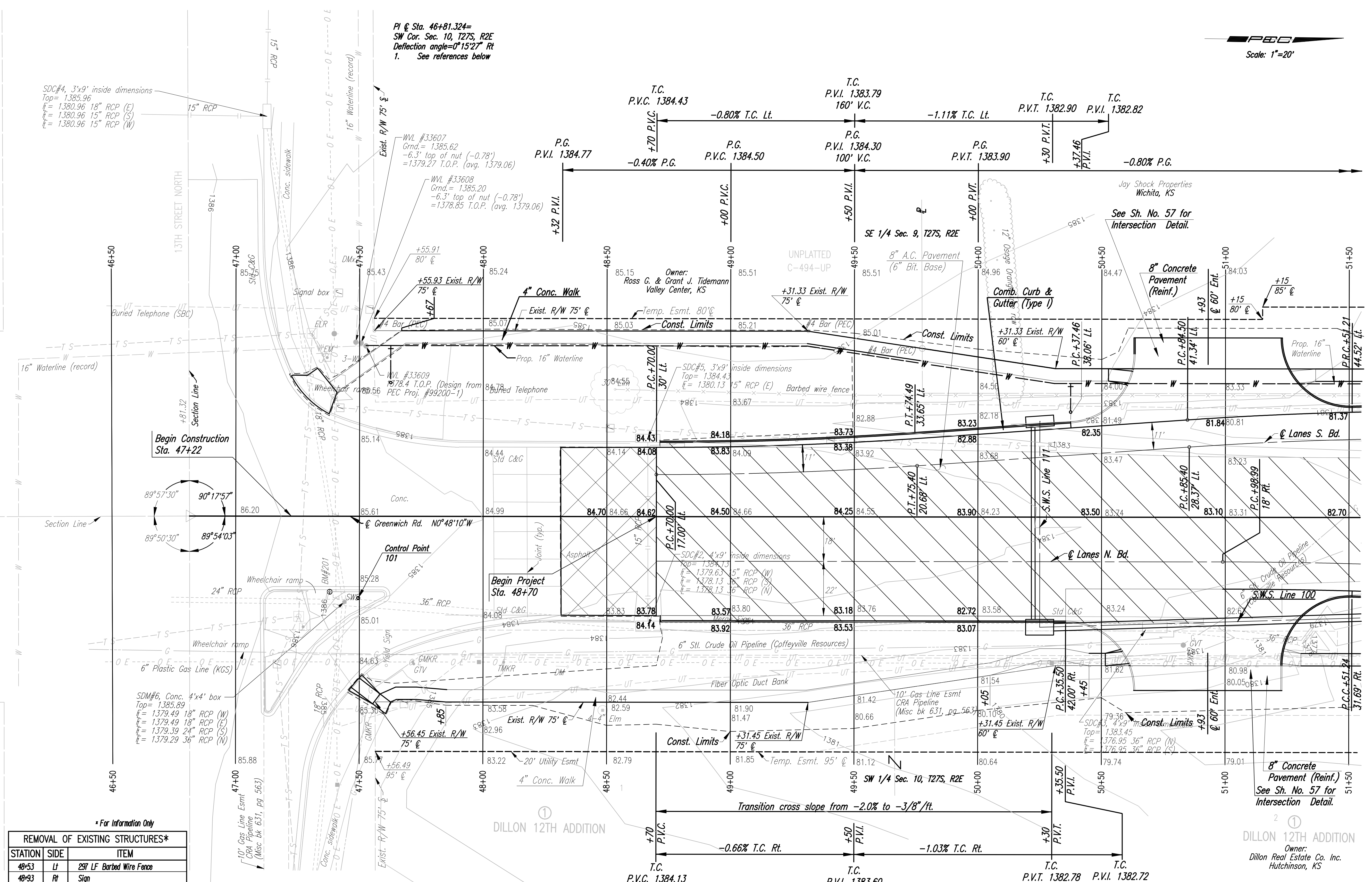
NW 1/4 Sec. 15, T27S, R2E

PI @ Sta. 46+81.324=
 SW Cor. Sec. 10, T27S, R2E
 Deflection angle=0°15'27" Rt
 1. See references below

SDC#4, 3'x9' inside dimensions
 Top= 1385.96
 F= 1380.96 18" RCP (E)
 F= 1380.96 15" RCP (S)
 F= 1380.96 15" RCP (W)

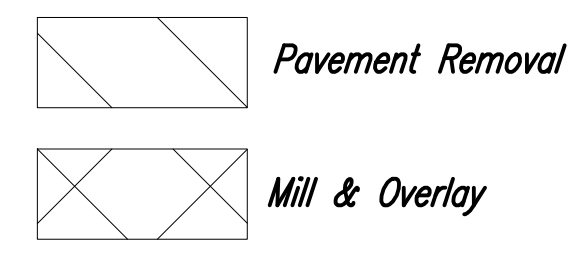
T.C. P.V.C. 1384.43
 -0.80% T.C. Lt.
 T.C. P.V.I. 1383.79
 160' V.C.
 -1.11% T.C. Lt.
 T.C. P.V.I. 1382.90
 T.C. P.V.I. 1382.82

P.G. P.V.I. 1384.77
 -0.40% P.G.
 P.G. P.V.C. 1384.50
 P.G. P.V.I. 1384.30
 100' V.C.
 P.G. P.V.T. 1383.90
 P.V.I. 1383.46
 -0.80% P.G.



Note: Elevations shown along Curb & Gutter are to High Edge and Top of Curb

LEGEND



* For Information Only

STATION	SIDE	ITEM
48+53	Lt	29' LF Barbed Wire Fence
48+93	Rt	Sign
50+76	Rt	36'x58' RCP & End Section

- S 1/4 Corner Sec. 9, T27S, R2E
- Fnd. #5 Bar Garber Cap at Surface in Ctr. Traveled Way 13th St. N.
 - N 1,694,425.6007 E 1,683,646.6558
 - 2,644.17' Lt. or West @ Sta. 46+81.32 NW 1/4 90°17'57"
 - #5 Bar M.K.E.C. Cap 49.90' N
 - Spike in Top Fence Brace Post 50.78' NNE
 - Spike in Top Fence Brace Post 52.72' SSE
 - Chis. + in Cntr. Face Curb Inlet 110.22' WSW
 - Old R.R. 30.00' W

- SW Corner Sec. 10, T27S, R2E
- Fnd. #5 Bar with Cap at Surface in Ctr. Intrinsic 13th St. N. and Greenwich Rd.
 - N 1,694,476.4532 E 1,686,290.3343
 - @ Sta. 46+81.32
 - Chis. + in Conc. Base Traffic Signal Pole 82.76' NW
 - Chis. + in Conc. Base Traffic Signal Pole 63.08' NE
 - Chis. + in Cntr. Face Curb Inlet 122.92' SSE
 - Chis. + in Cntr. Face Curb Inlet 118.74' SSW

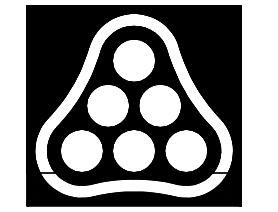
- S 1/4 Corner Sec. 10, T27S, R2E
- Fnd. #5 Bar Garber Cap at Surface in Ctr. Traveled Way 13th St. N.
 - N 1,694,518.2330 E 1,688,943.8500
 - 2,653.84' Rt. or East @ Sta. 46+81.32 NE 1/4 89°54'03"
 - 3/4" I.P. 59.44' S
 - Chis. + in Top Curb East End Median 21.50' W
 - 3 Nails on East Face P.P. 39.02' SE
 - Spike and Washer on East Face P.P. 79.70' NNE

See Sh. No. 36 & 38 for Storm Sewer.

Utilities

- Power Westar Energy
 Telephone SBC
 Gas Coffeyville Resources Crude Transportation

BM #201 Chis. on West Curb Island at NE Corner of Greenwich Rd. and 13th St.
 31' Rt. Sta. 47+38 Elev.=1386.15



No.	Revision	By	Date

GREENWICH ROAD PLAN

STA. 48+00 TO 51+50
 JAMES L. ARMOUR, P.E.—CITY ENGINEER
 CITY OF WICHITA PROJECT NO. 472-84004

Professional Engineering Consultants, P.A.
 303 S. TOPKA • WICHITA, KANSAS 67202
 316-262-2691 • FAX 316-262-3003

Designed by	JPM, JGP	Job No.	04219
Drawn by	JGP, RJM	Date	AUGUST, 2004

Sht. 6 of 215

DSNR: JGP SCALE: 1"=20'
 I:/2004/04219/PLAN04800.DGN 10-27-2004 16:20:40 LAST REV: 8-15-05 BY: JGP