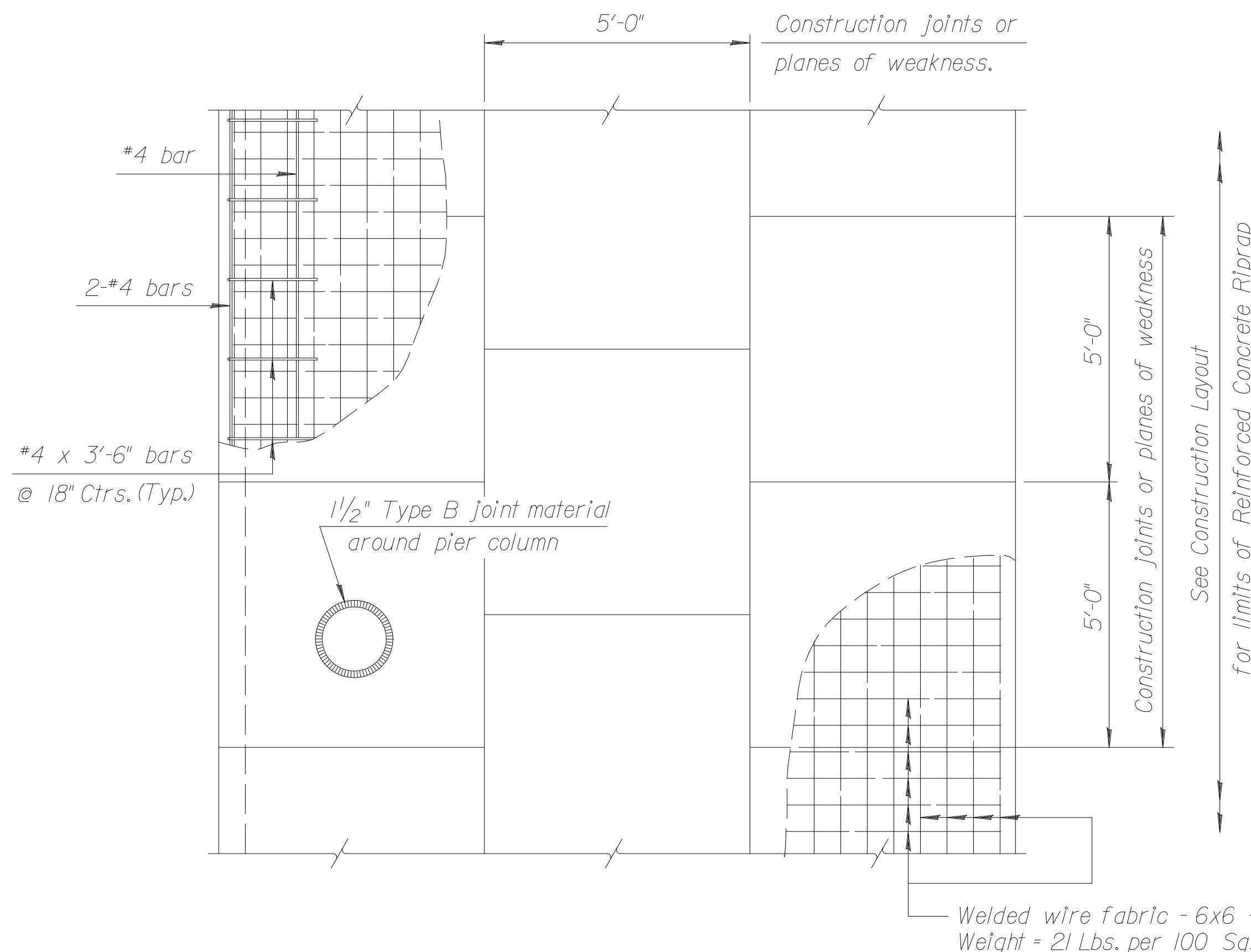
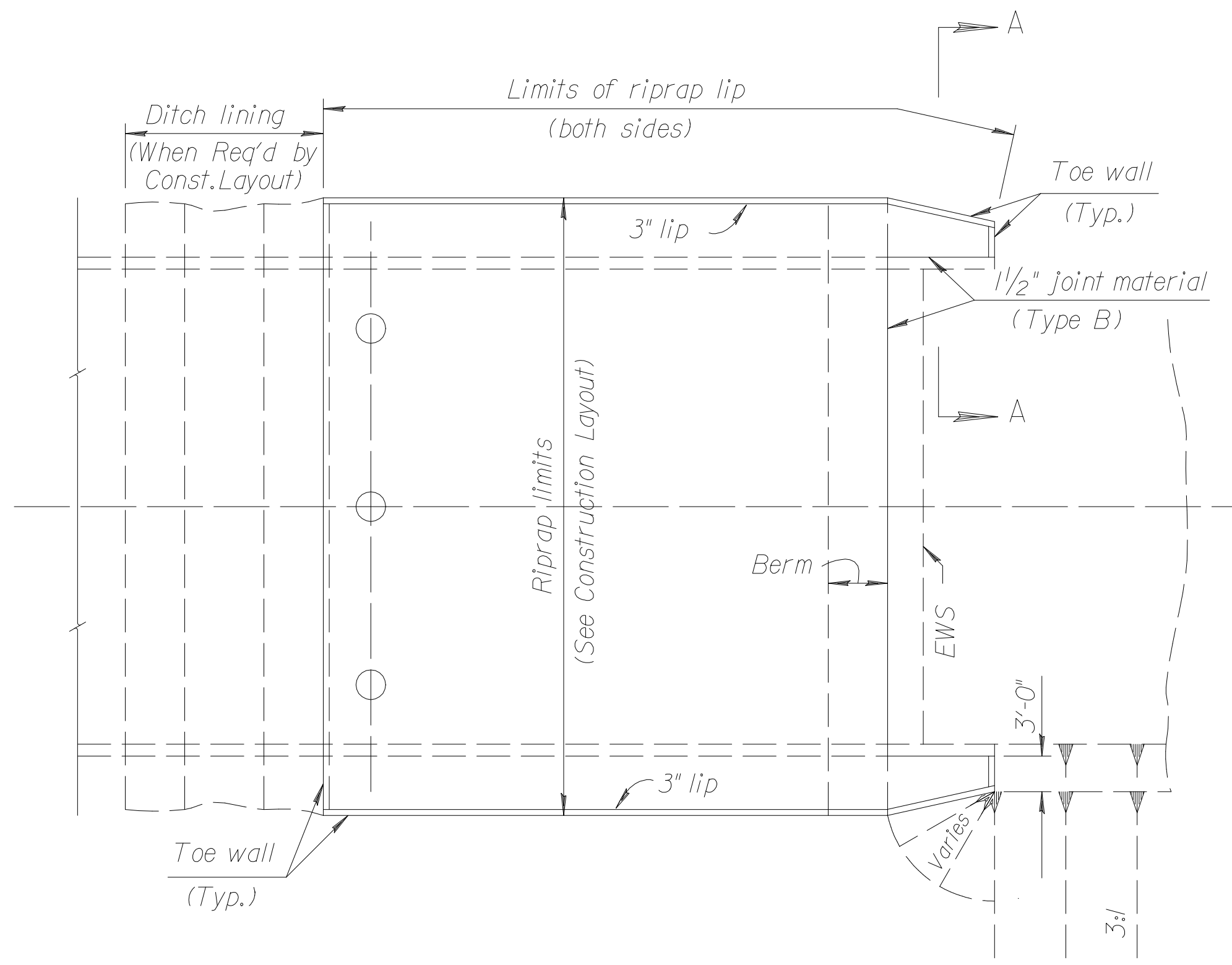


STATE	PROJECT NO.	YEAR	SHEET NO.	TOTAL SHEETS
KANSAS	472-84004	2005	112	215



PLAN  
(Showing Joint Layout)



TYPICAL PLAN

Notes:

Use Grade 3,0 concrete for the riprap.

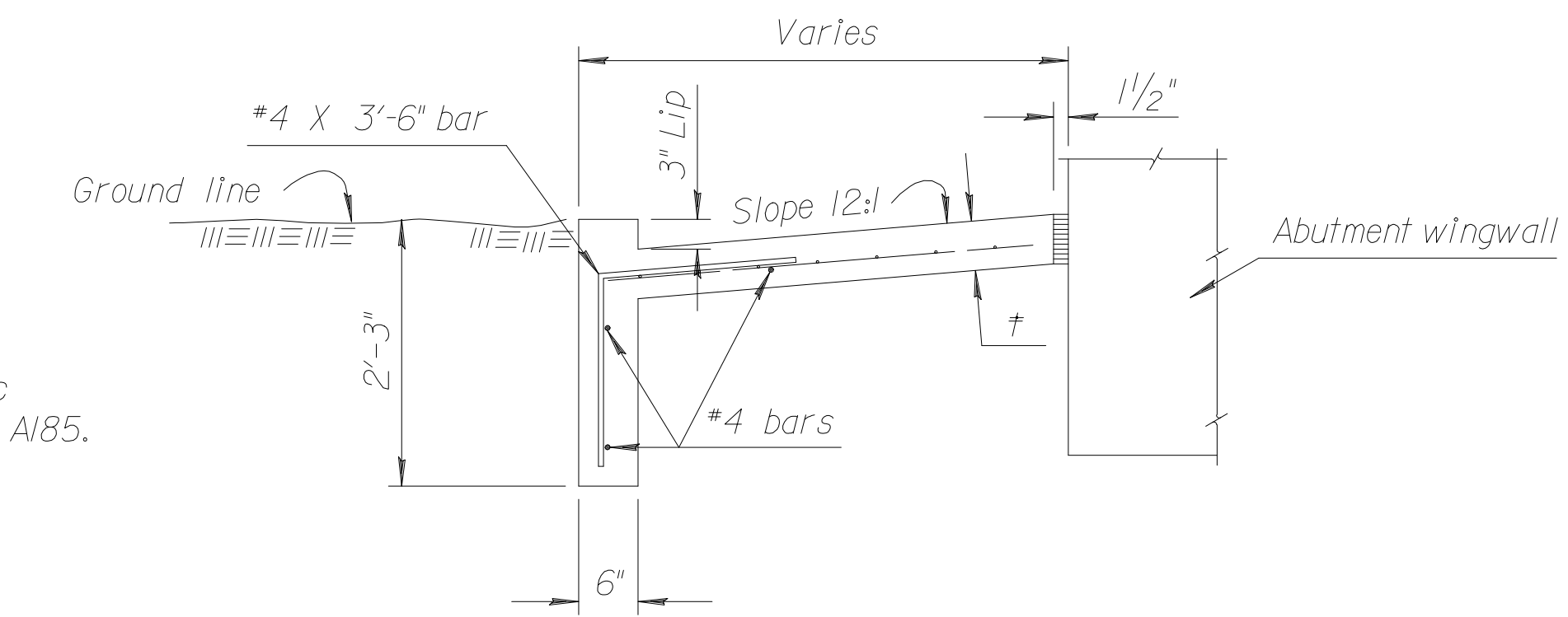
Use 6x6 - W1.4 x W1.4 welded wire fabric conforming to the requirements of ASTM A185.

Use reinforcing steel conforming to the requirements of ASTM A615, Grade 60.

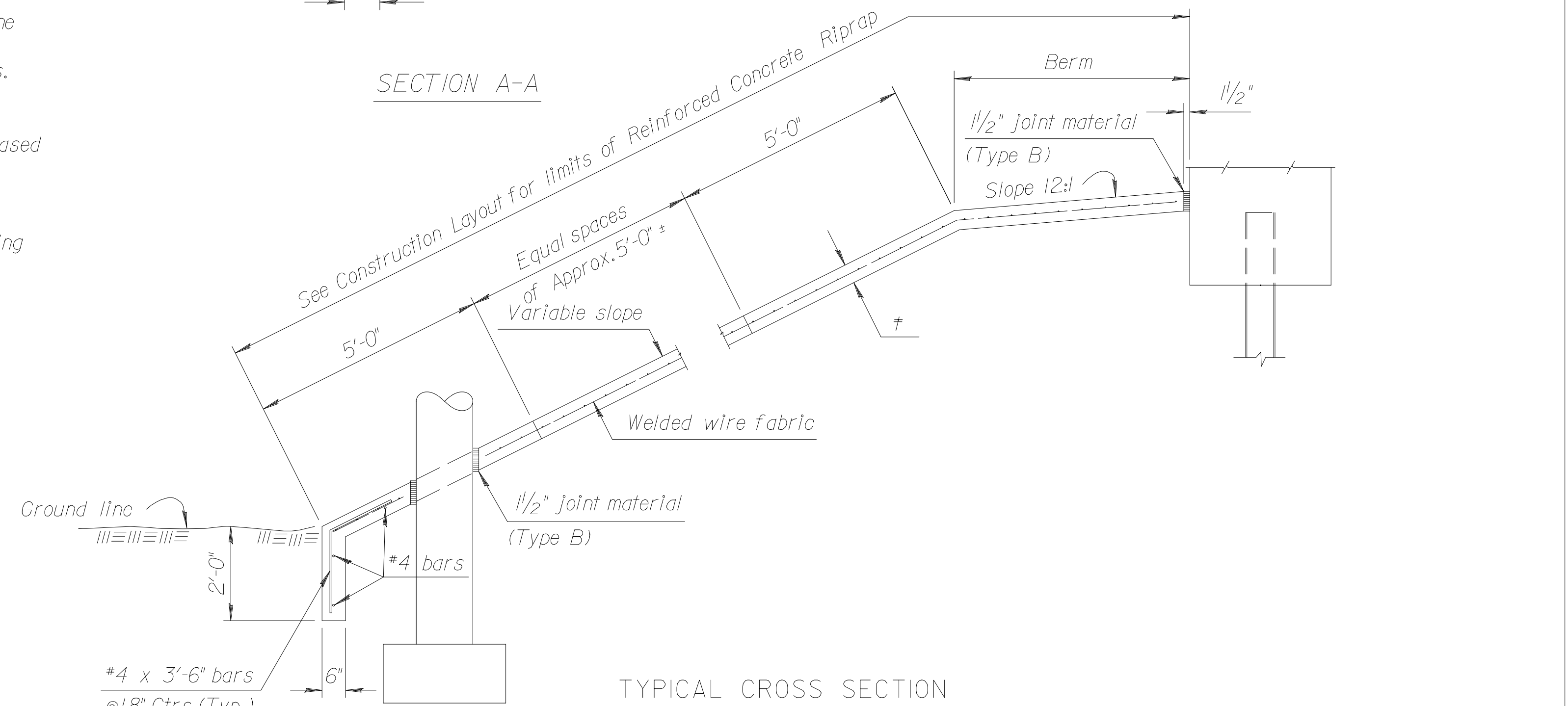
Place 1/2" Type B expansion material in the joints caused by any intersection of the riprap with the abutment, wings, or columns.

Measurement of the "Reinforced Concrete Riprap" shall be in square yards and is based on the outside surface area.

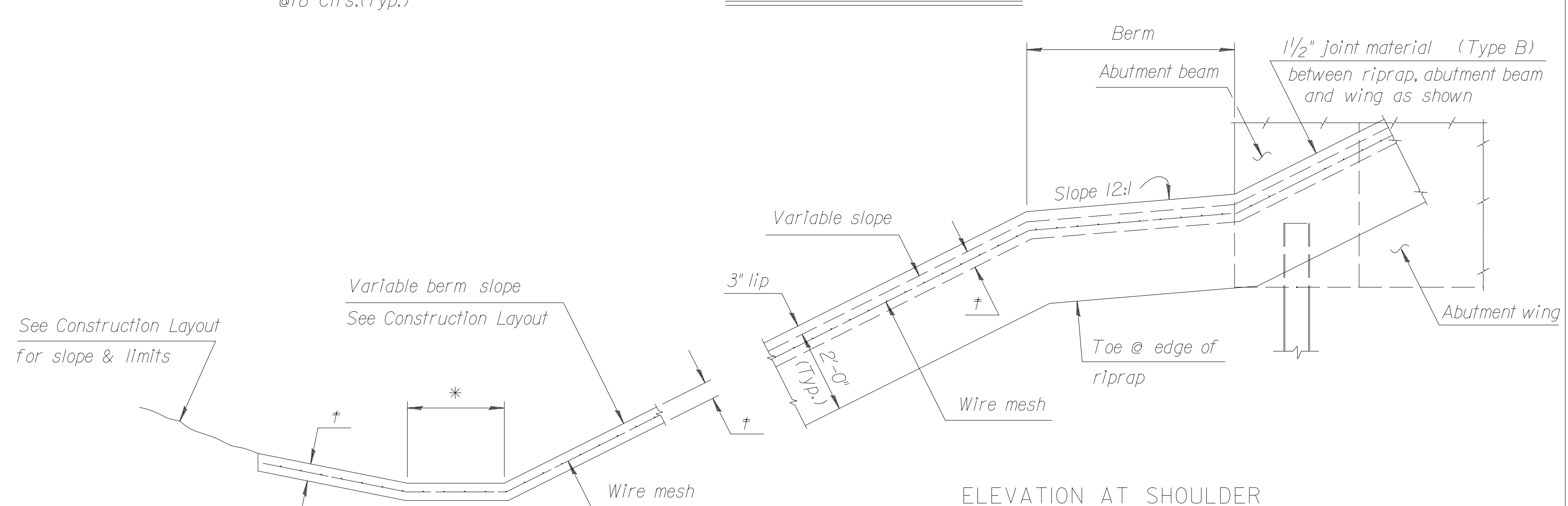
The toe walls, 3" lip, Type B expansion material, welded wire fabric, and reinforcing steel are subsidiary to the bid item "Reinforced Concrete Riprap".



SECTION A-A



TYPICAL CROSS SECTION



ELEVATION AT SHOULDER

\* See Construction Layout for this dimension (1'-0" Min.).

† See Construction Layout for thickness.

DITCH BOTTOM

(When Req'd by Construction Layout sheet)

Std. Base File: br130.dgn  
 Plotted By: ras  
 File: t2004/04219/FINAL/04219-000.C-Br130(EKIV7).dgn  
 Plot Date: 9-27-2005

NO.	DATE	REVISIONS	BY	APP'D
1	10-28-04	Concrete - Class to Grade	RAM	KFH
KANSAS DEPARTMENT OF TRANSPORTATION				
REINFORCED CONCRETE RIPRAP				
BRI30				
DESIGNED	8-24-88	APP'D	KENNETH F. HURST	
DESIGN CK.	DETAILED	RDR QUANTITIES	TRACED	
	DETAIL CK.	JVJ QUAN. CK.	TRACE CK.	