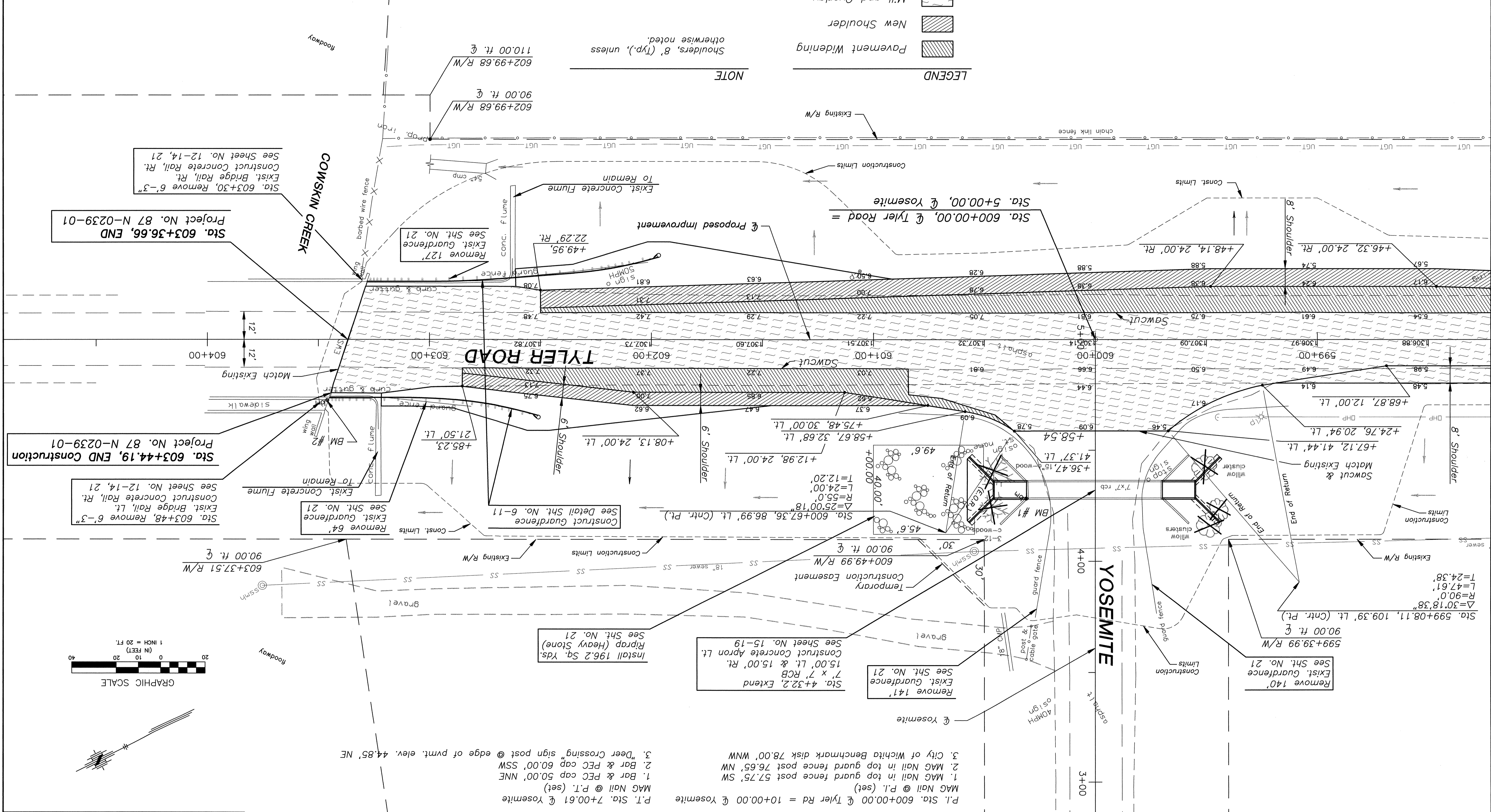


KANSAS DEPARTMENT OF TRANSPORTATION
 PLAN SHEET
 TYLER ROAD
 STA. 598+50.00 TO STA. 603+36.66



BM #1 City of Wichita Benchmark
 NW corner 7'x7' RCB under Yosemite
 Elev. 1304.73

BM #2 City of Wichita Benchmark
 On Sidewalk @ S. end Tyler Rd Bridge
 Elev. 1308.00

Sta. 603+48, Remove 6'-3"
 Exist. Bridge Rail, Lt.
 Construct Concrete Rail, Rt.
 See Sht. No. 12-14, 21

Sta. 603+44.19, END Construction
 Project No. 87 N-0239-01

Sta. 603+36.66, END
 Project No. 87 N-0239-01

Sta. 603+30, Remove 6'-3"
 Exist. Bridge Rail, Rt.
 Construct Concrete Rail, Rt.
 See Sht. No. 12-14, 21

Remove 127'
 Exist. Guardence
 See Sht. No. 21

Remove 64'
 Exist. Guardence
 See Detail Sht. No. 6-11

Remove 141'
 Exist. Guardence
 See Sht. No. 21

Remove 140'
 Exist. Guardence
 See Sht. No. 21

Remove 141'
 Exist. Guardence
 See Sht. No. 21

Remove 141'
 Exist. Guardence
 See Sht. No. 21

Remove 141'
 Exist. Guardence
 See Sht. No. 21

Remove 141'
 Exist. Guardence
 See Sht. No. 21

Remove 141'
 Exist. Guardence
 See Sht. No. 21

Remove 141'
 Exist. Guardence
 See Sht. No. 21

NOTE
 Shoulders, 8' (Typ.), unless
 otherwise noted.

LEGEND
 Pavement Widening
 New Shoulder
 Mill and Overlay
 Tree Removal

GRAPHIC SCALE
 1 INCH = 20 FT.

3. "Deer Crossing" sign post @ edge of prvnt. elev. 44.85' NE
 2. Bar & PEC cap 50.00' NNE
 1. Bar & PEC cap 60.00' SSW
 P.I. Sta. 7+00.61 @ Yosemite

P.I. Sta. 600+00.00 @ Tyler Rd = 10+00.00 @ Yosemite

3. City of Wichita Benchmark disk 78.00' WNW
 2. MAG Nail in top guard fence post 76.65' NW
 1. MAG Nail in top guard fence post 57.75' SW

Remove 141'
 Exist. Guardence
 See Sht. No. 21

Remove 141'
 Exist. Guardence
 See Sht. No. 21

Remove 141'
 Exist. Guardence
 See Sht. No. 21

Remove 141'
 Exist. Guardence
 See Sht. No. 21

Remove 141'
 Exist. Guardence
 See Sht. No. 21

Remove 141'
 Exist. Guardence
 See Sht. No. 21

Remove 141'
 Exist. Guardence
 See Sht. No. 21

Remove 141'
 Exist. Guardence
 See Sht. No. 21

Remove 141'
 Exist. Guardence
 See Sht. No. 21

Remove 141'
 Exist. Guardence
 See Sht. No. 21

Remove 141'
 Exist. Guardence
 See Sht. No. 21

DATE	BY	REFERENCES CHECKED	REFERENCES NOTED

STATE	PROJECT NO.	YEAR	SHEET NO.	TOTAL SHEETS
KANSAS	87 N-0239-01	2004	4	47