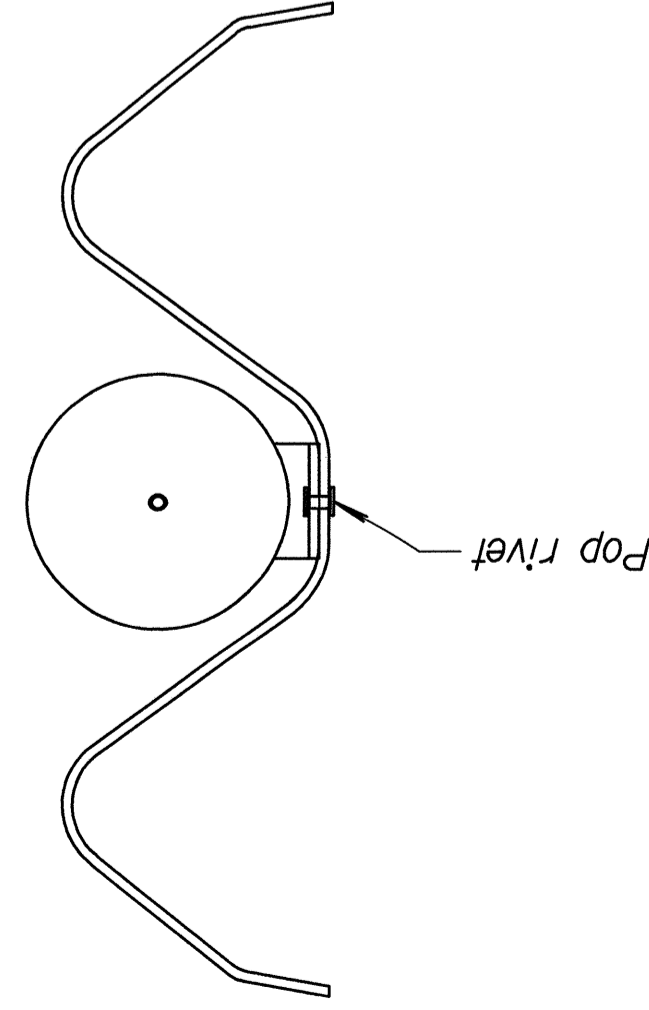
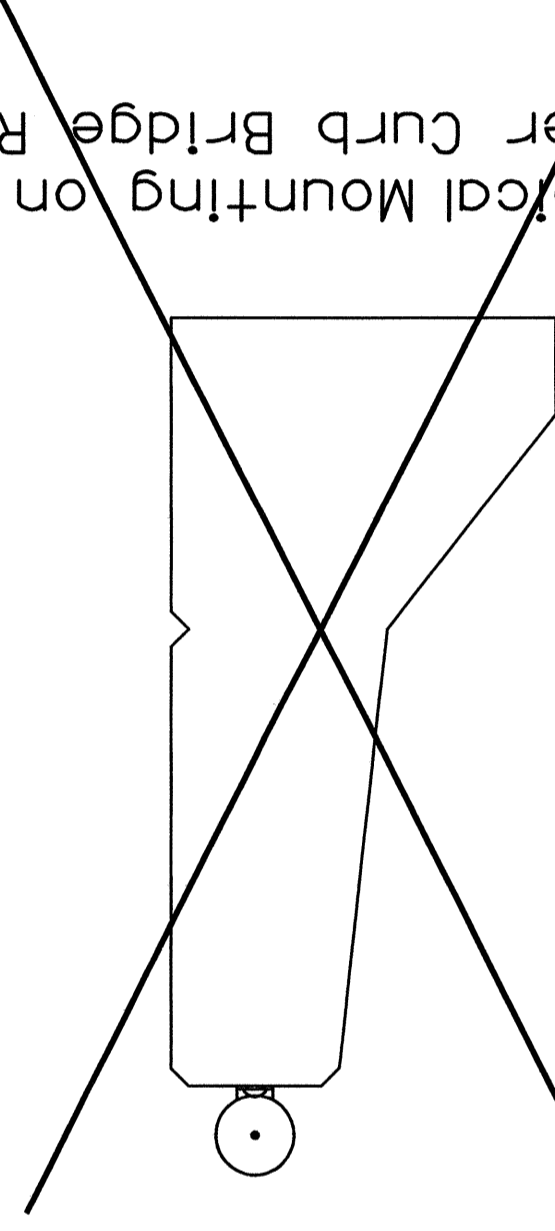


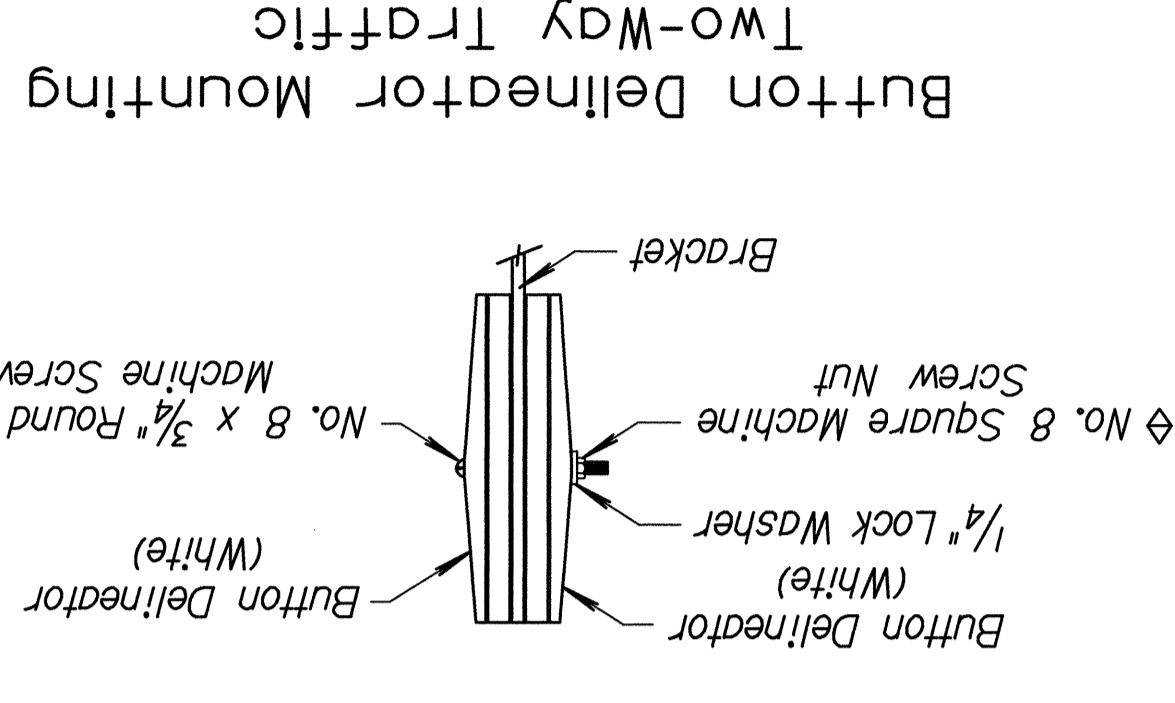
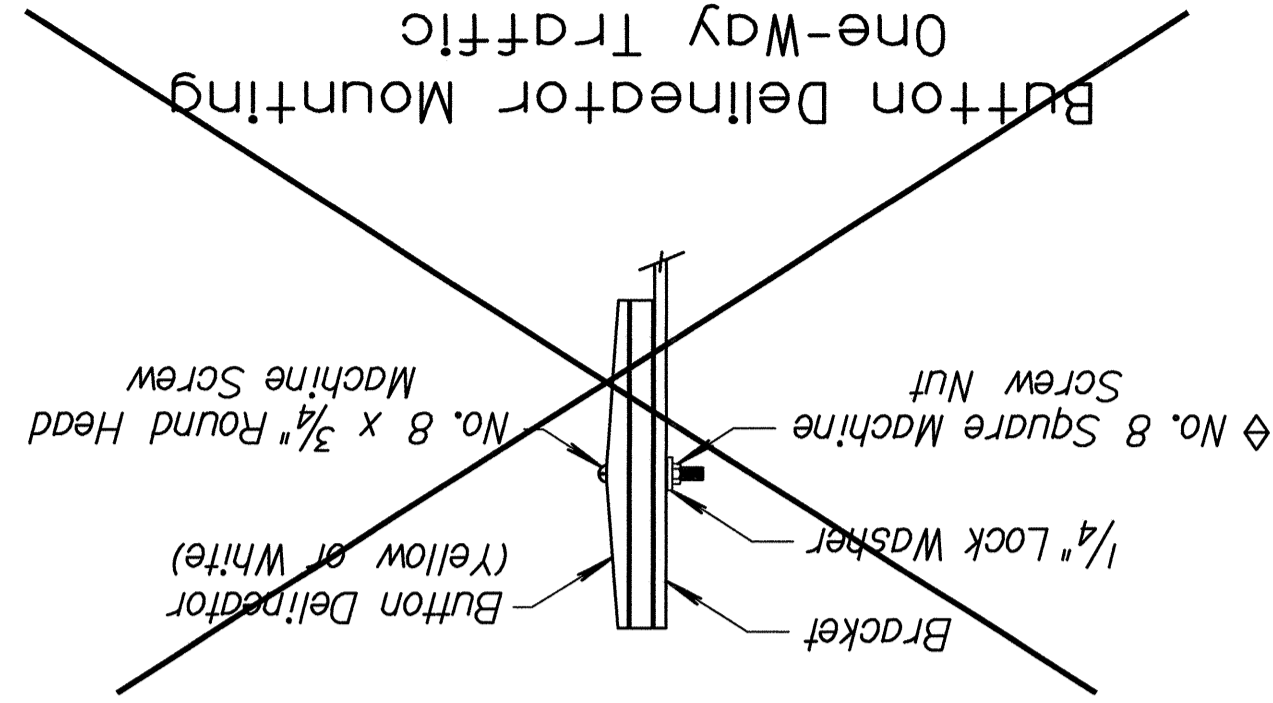
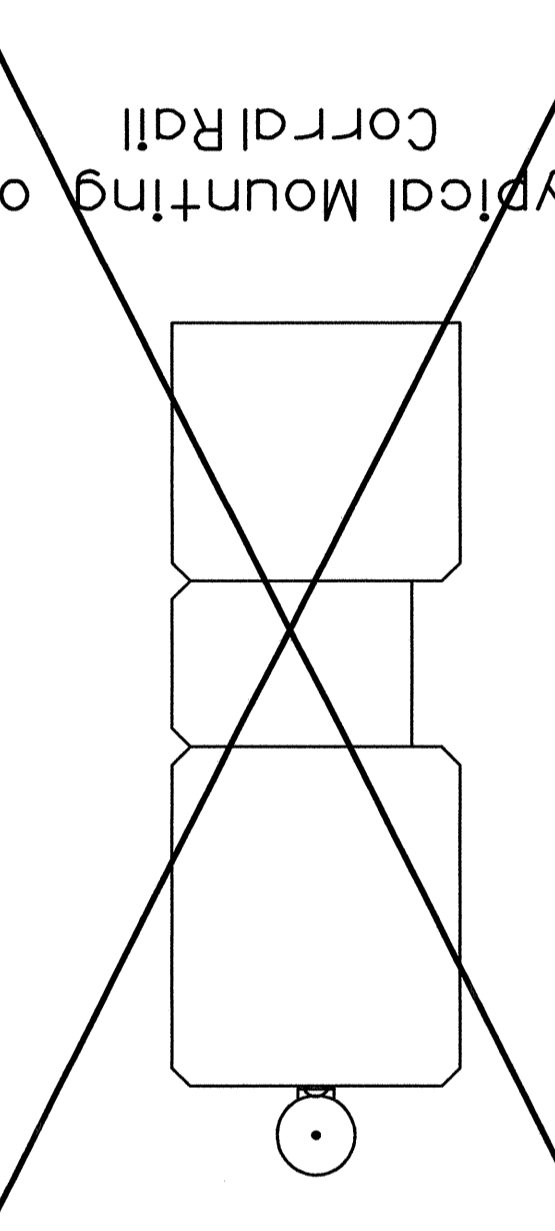
Typical Mounting on W-Beam



Typical Mounting on Barrier Curb Bridge Rail

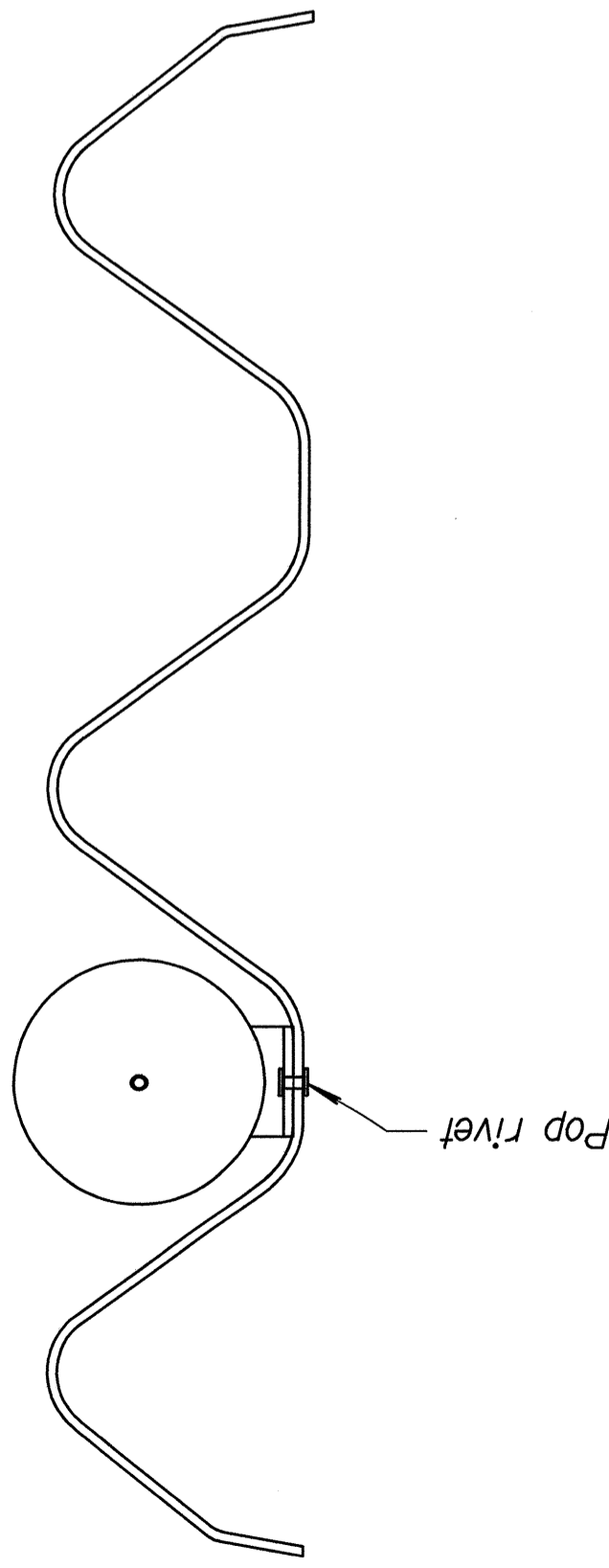


Typical Mounting on Corral Rail

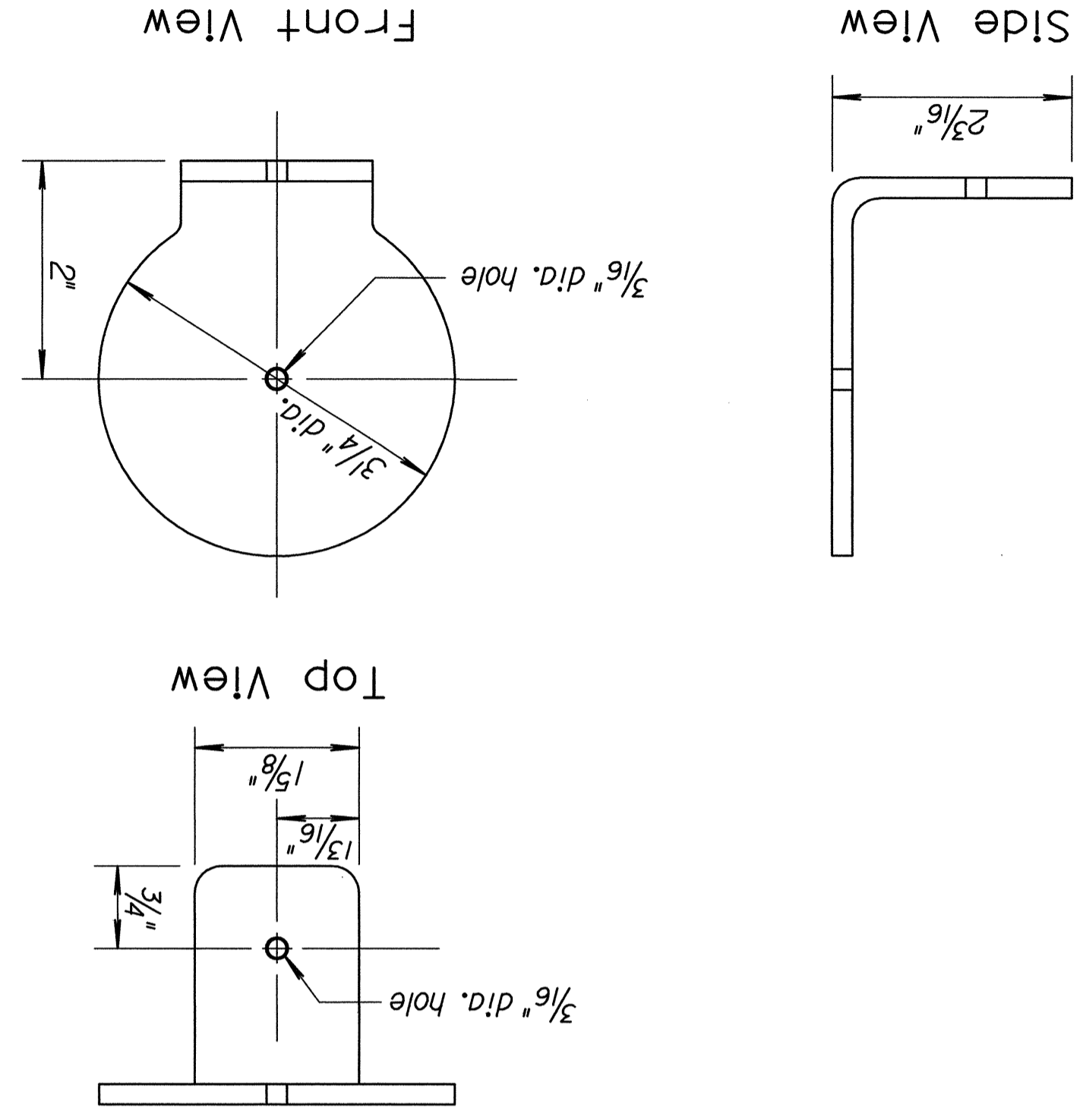


As an alternate to the No. 8 machine screw the button delineators may be fastened to the bracket with pop rivets.

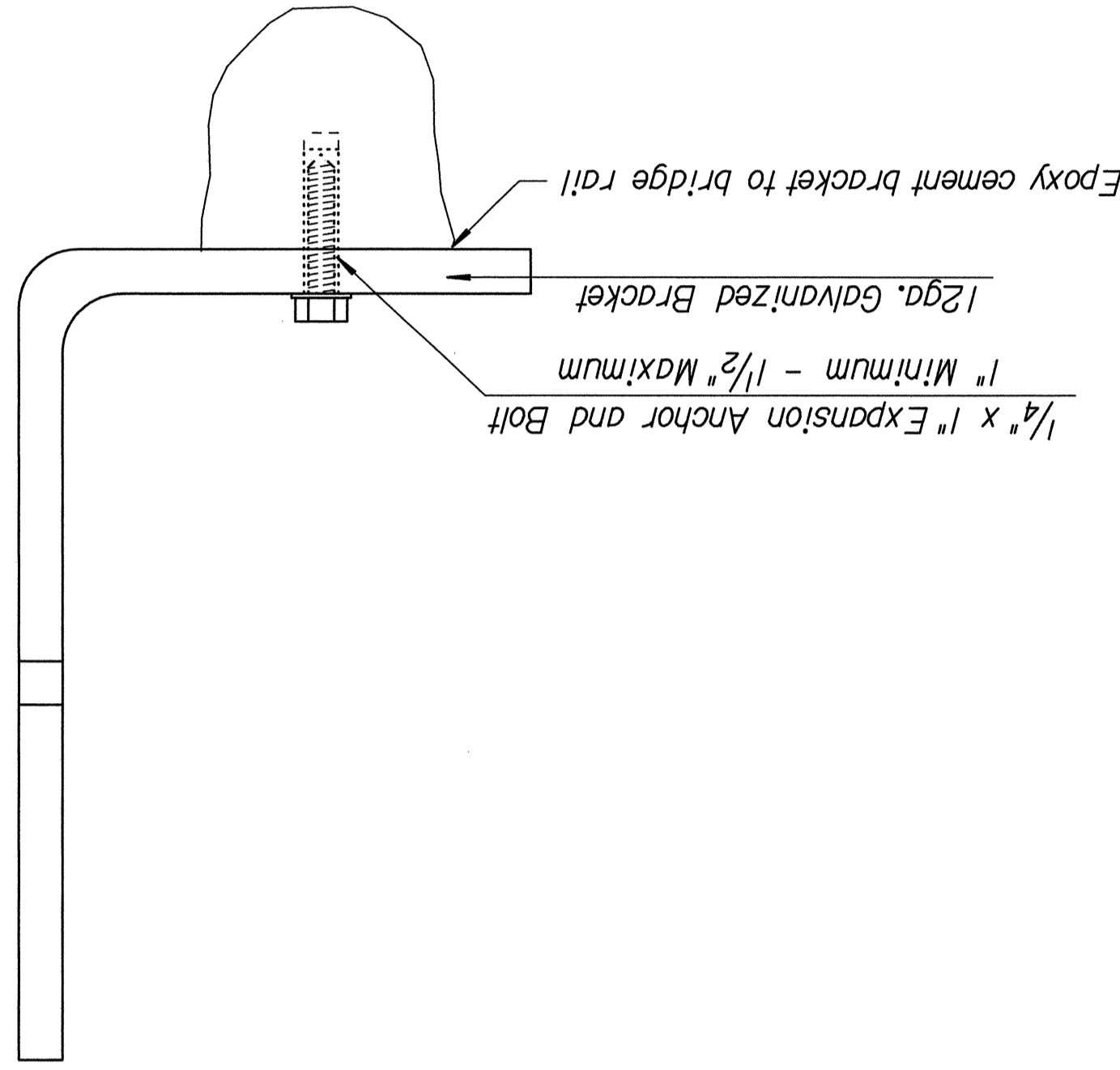
Typical Mounting on Thrie Beam Guard Fence



Bracket Details



Method of Attaching Bracket to Bridge Rail



General Notes

Delineators shall be installed on the traffic side of all guard fence installations. Spacing between delineators shall not exceed 25 feet. No delineator shall be located between the head and post 5 when the guard fence is terminated with the LET or BEST end treatment. Delineators shall be located between posts (not on a post).
 Button delineators shall be installed back to back on the bracket when used on two-way roadways. All delineators used on two-way roadways shall be white.
 When used on one-way or divided roadways, button delineators shall be installed on the approach traffic side of the bracket only. Delineator color shall be yellow when used on the left side and white when used on the right side of the roadway.
 The 3/4 inch diameter button delineator shall comply with the KDOT Standard Specifications.
 The bracket shall be fabricated from 12 ga. steel and shall be galvanized in accordance with the KDOT Standard Specifications.
 All hardware used for the connections shall comply with the KDOT Standard Specifications.
 All fasteners shall be either zinc or cadmium plated.
 All work and materials required for the installation of the delineators on guard fence shall be subsidiary to the bid item "Steel Plate Guard Fence".
 On projects with staged construction, such as a divided highway with one side closed and two-way traffic during construction, delineators shall be installed for the final (permanent) traffic configuration.

STATE	PROJECT NO.	YEAR	SHEET NO.	TOTAL SHEETS
KANSAS	87 M-0239-01	2004	7	47

NO.	DATE	BY	REVISIONS
1	6-23-97	R.J.S. J.O.B.	Revised delineator mounting method
2	7-21-97	R.J.S. J.O.B.	Location on LET or BEST
3	12-1-97	R.J.S. J.O.B.	Revised connection hardware note
4	5-5-00	R.J.S. J.O.B.	Added note for temporary traffic

KANSAS DEPARTMENT OF TRANSPORTATION			
RD610			
FHWA APPROVAL			
DESIGNED	6-15-00	APPD. James O. Brewer	B.N.B.
QUANTITIES	TRACED	CK. R.J.S.	
DETAIL CK.	QUAN. CK.		