

HORIZONTAL CONTROL

| LOCATION | NORTHING | EASTING |
|----------|-------------|-------------|
| 1 | N 20,144.49 | E 21,388.74 |
| 2 | N 20,134.38 | E 21,370.34 |
| 3 | N 20,130.53 | E 21,363.32 |
| 4 | N 20,120.67 | E 21,345.36 |
| 5 | N 20,115.61 | E 21,336.15 |
| 6 | N 20,036.86 | E 21,101.40 |
| 7 | N 20,015.55 | E 21,101.40 |
| 8 | N 19,997.55 | E 21,101.40 |
| 9 | N 19,976.55 | E 21,101.40 |
| 10 | N 19,860.68 | E 21,491.33 |
| 11 | N 19,872.44 | E 21,508.68 |
| 12 | N 19,876.93 | E 21,515.30 |
| 13 | N 19,882.82 | E 21,523.99 |
| 14 | N 19,894.32 | E 21,540.95 |
| 15 | N 20,037.07 | E 21,297.30 |
| 16 | N 20,016.06 | E 21,297.30 |
| 17 | N 19,998.06 | E 21,297.30 |
| 18 | N 19,977.06 | E 21,297.30 |
| 19 | N 20,072.11 | E 21,372.02 |
| 20 | N 19,930.19 | E 21,444.17 |
| 21 | N 19,941.81 | E 21,461.94 |
| 22 | N 19,941.65 | E 21,484.12 |
| 23 | N 19,941.38 | E 21,521.77 |
| 24 | N 19,956.06 | E 21,427.83 |
| 25 | N 19,955.72 | E 21,474.78 |
| 26 | N 19,955.54 | E 21,499.52 |
| 27 | N 20,058.40 | E 21,366.94 |
| 28 | N 20,056.88 | E 21,412.77 |
| 29 | N 20,056.04 | E 21,437.92 |
| 30 | N 20,037.79 | E 21,353.92 |
| 31 | N 20,016.81 | E 21,367.39 |
| 32 | N 19,988.36 | E 21,385.66 |
| 33 | N 20,037.08 | E 21,478.95 |
| 34 | N 20,017.18 | E 21,489.52 |
| 35 | N 19,988.72 | E 21,504.62 |
| 36 | N 20,016.88 | E 21,391.64 |
| 37 | N 20,017.02 | E 21,437.21 |
| 38 | N 20,017.09 | E 21,461.79 |

HORIZONTAL CONTROL

| LOCATION | NORTHING | EASTING |
|----------|-------------|-------------|
| 39 | N 20,007.28 | E 21,519.33 |
| 40 | N 19,999.28 | E 21,519.39 |
| 41 | N 20,016.47 | E 21,348.93 |
| 42 | N 20,008.50 | E 21,348.97 |
| 43 | N 20,014.01 | E 21,227.30 |
| 44 | N 20,008.63 | E 21,213.30 |
| 45 | N 20,005.80 | E 21,199.30 |
| 46 | N 20,005.70 | E 21,176.30 |
| 47 | N 19,997.69 | E 21,176.30 |
| 48 | N 19,997.70 | E 21,185.30 |
| 49 | N 19,997.83 | E 21,199.30 |
| 50 | N 20,000.29 | E 21,213.30 |
| 51 | N 20,005.68 | E 21,227.30 |
| 52 | N 20,007.90 | E 21,241.30 |

CENTERLINE CONTROL

| LOCATION | NORTHING | EASTING |
|----------|-------------|-------------|
| A* | N 20,000.00 | E 20,000.00 |
| B* | N 20,009.39 | E 21,101.30 |
| C | N 20,009.39 | E 21,101.30 |
| D | N 20,012.72 | E 21,491.88 |
| E | N 20,012.10 | E 21,418.86 |
| F | N 19,874.69 | E 21,511.99 |
| G | N 20,012.22 | E 21,432.86 |
| H | N 20,132.46 | E 21,366.83 |
| I | N 19,956.53 | E 21,113.11 |
| J | N 19,973.71 | E 21,578.23 |

A* - SM @ Seneca & Pawnee, 1/2" Iron Pipe Thimble
 B* - 1/2" Rebar @ Seneca & Pawnee, 14.26' NE of LP
 51.41' SE of TSP
 I* - SW Cor. Osage & Pawnee, 1/2" Iron Pipe 14.48' West of Curb
 15.77' South of Curb
 J* - COW Disc on South Rail of Bridge

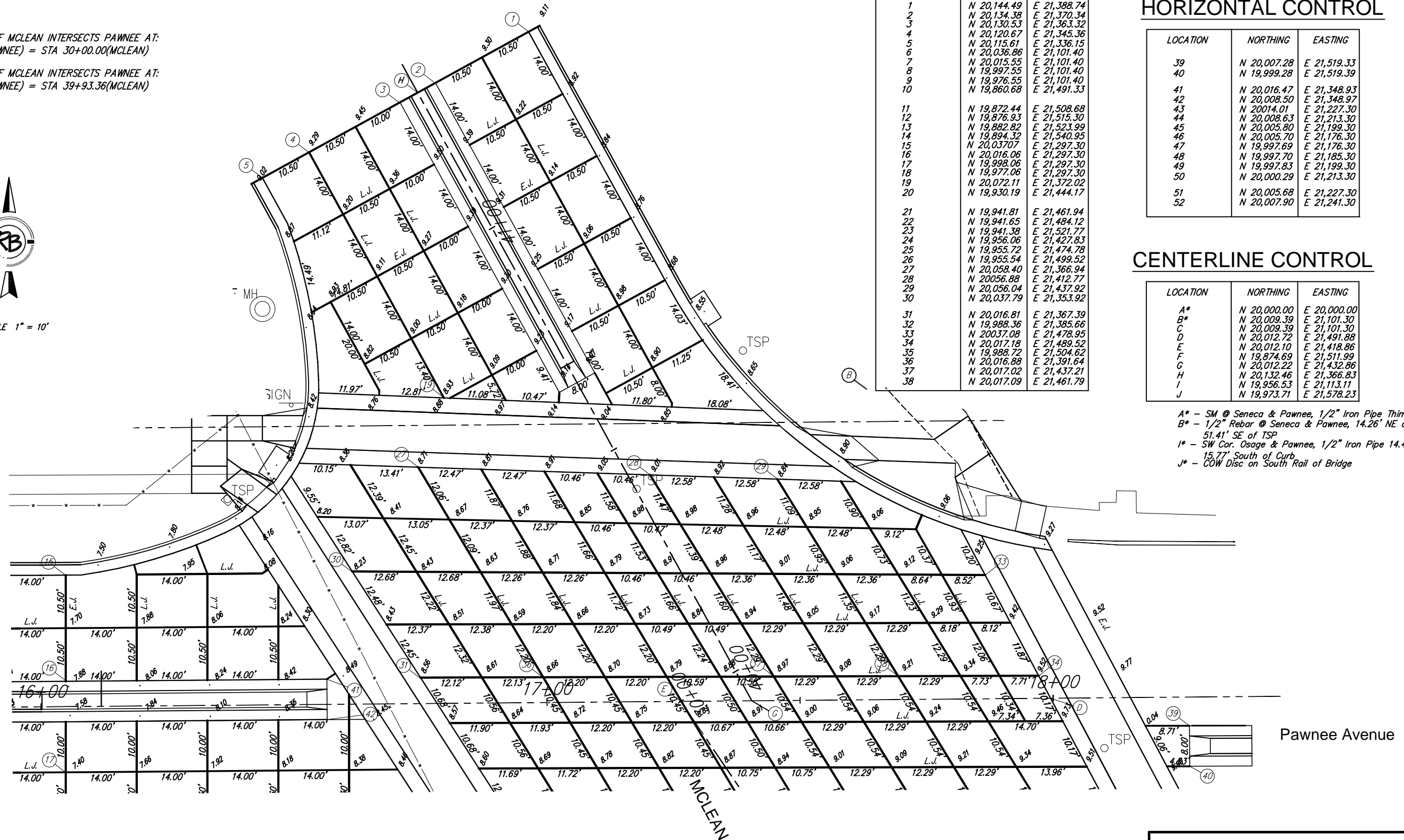
NOTE:

THE SOUTH LEG OF MCLEAN INTERSECTS PAWNEE AT:
 STA 17+26.47(PAWNEE) = STA 30+00.00(MCLEAN)

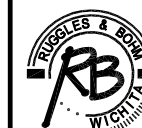
THE NORTH LEG OF MCLEAN INTERSECTS PAWNEE AT:
 STA 17+40.47(PAWNEE) = STA 39+93.36(MCLEAN)



SCALE 1" = 10'



Pawnee and McLean Improvements North Paving Plan



Ruggles & Bohm, P.A.
 Engineering, Surveying, Land Planning
 924 North Main (316) 264-8008
 Wichita, Kansas 67203 (316) 264-4621 fax
 www.rbkansas.com E-mail: info@rbkansas.com

DRAWING FILE: eng base PROJECT NUMBER: 472-84007 DATE: Dec. 1, 2004

| | | | |
|---------|---------|-------|----|
| DESIGN | PDC | SHEET | 11 |
| DRAWN | PDC | | |
| REVIEW | 6/11/06 | OF | 43 |
| UTILITY | | | |