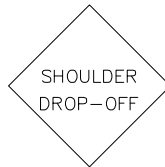


W8-1
30"x30"

BUMP SIGN
(AS REQUIRED BY THE ENGINEER)



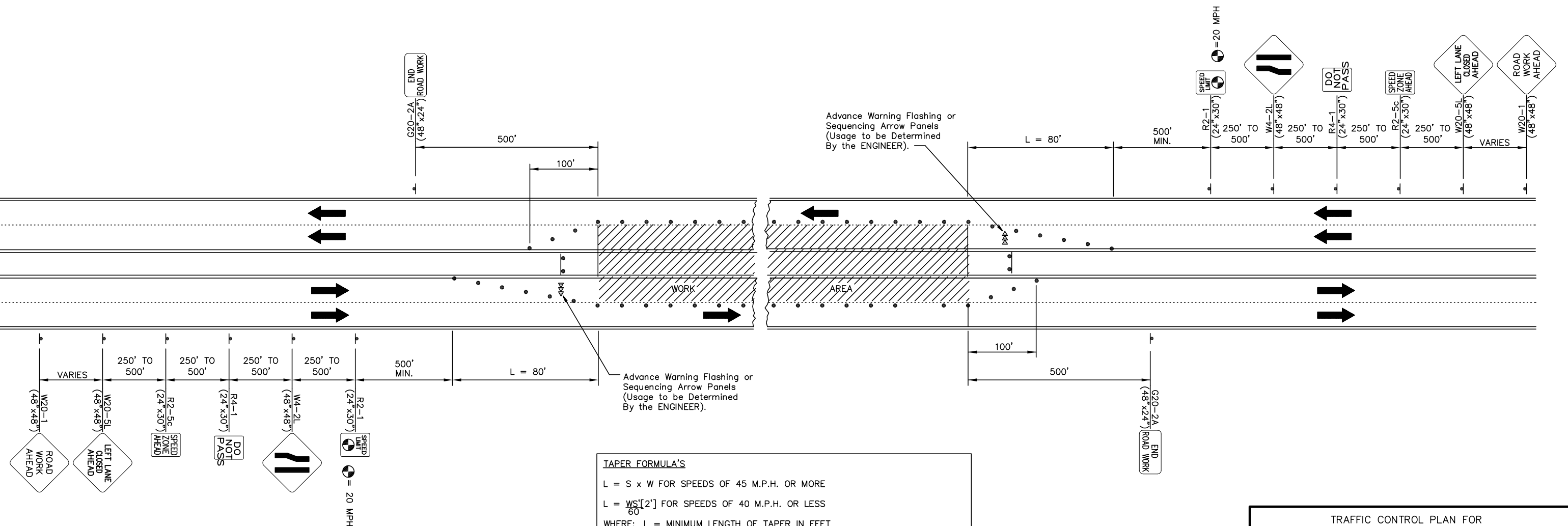
W8-9a
36"x36"

SHOULDER DROP-OFF SIGN
(SPACED @ 1/4 MILE THROUGHOUT
PROJECT AS REQUIRED)



W8-11
36"x36"

UNEVEN LANES SIGN
(SPACED @ 1/4 MILE THROUGHOUT
PROJECT AS REQUIRED)



- To Be Determined By The ENGINEER.
- Channelization devices.

TRAFFIC CONTROL PLAN
FOR HANDLING TRAFFIC THROUGH CONSTRUCTION
ON A FOUR-LANE UNDIVIDED ROADWAY

TRAFFIC CONTROL PLAN FOR
CLOSURE OF THE MIDDLE THREE LANES
ON A FIVE-LANE UNDIVIDED ROADWAY

Ruggles & Bohm, P.A.
Engineering, Surveying, Land Planning

924 North Main (316) 264-8008
Wichita, Kansas 67203 (316) 264-4621 fax
www.rbkansas.com E-mail: info@rbkansas.com

DESIGN PDC	SHEET 25 OF 43
DRAWN	
REVIEW	
UTILITY	
DRAWING FILE Traffic Control	PROJECT NUMBER 87N-0385-01
DATE 4/4/06	