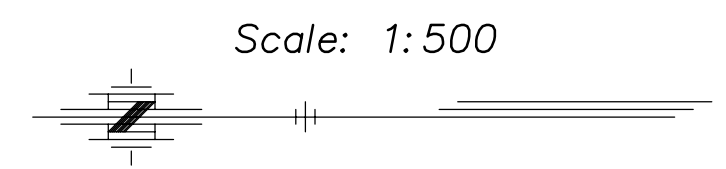
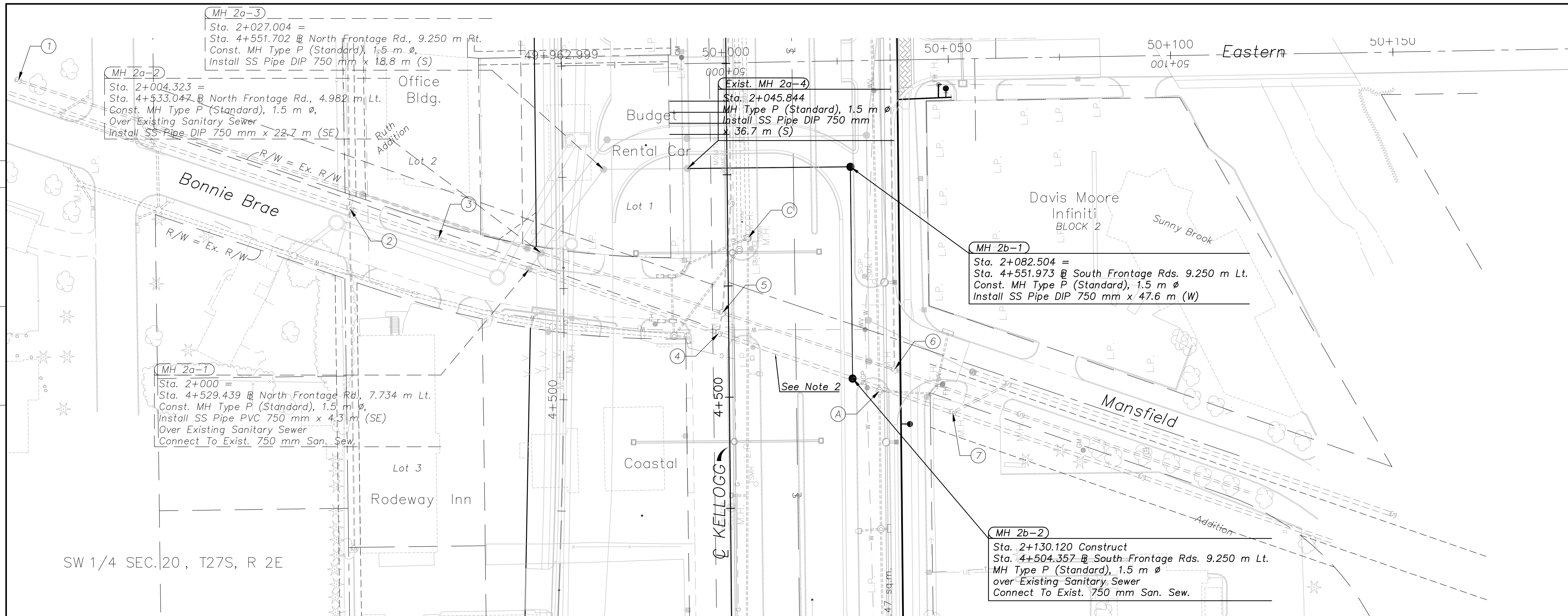
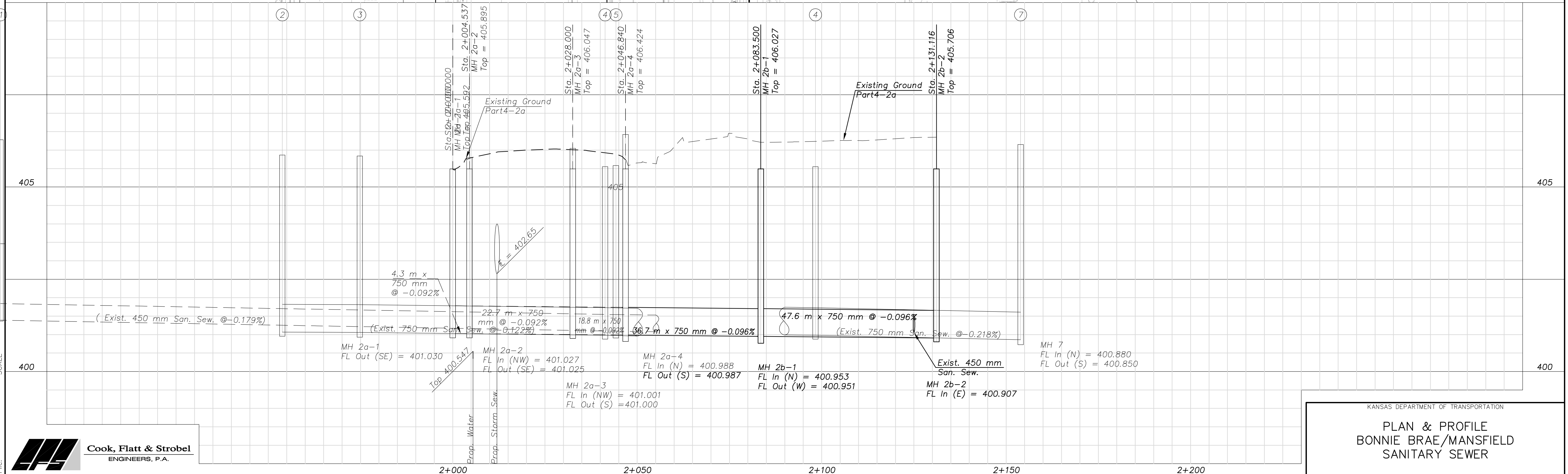


STATE	PROJECT NO.	YEAR	SHEET NO.	TOTAL SHEETS
KANSAS	54-87 K-8258-07	2004	46	101

DATE	BY	REFERENCE NOTED	REFERENCE CHECKED



- Notes:**
- Sanitary Sewer Pipe shall be Ductile Iron Pipe, Thickness Class 53, in accordance with the City of Wichita Standard Specifications for "Ductile Iron Pipe (Sanitary)."
 - The 750 mm SS pipe between MH 2a-1 and MH 2b-2 shall be abandoned and the holes at the manhole plugged.



KANSAS DEPARTMENT OF TRANSPORTATION
PLAN & PROFILE
BONNIE BRAE/MANSFIELD
SANITARY SEWER