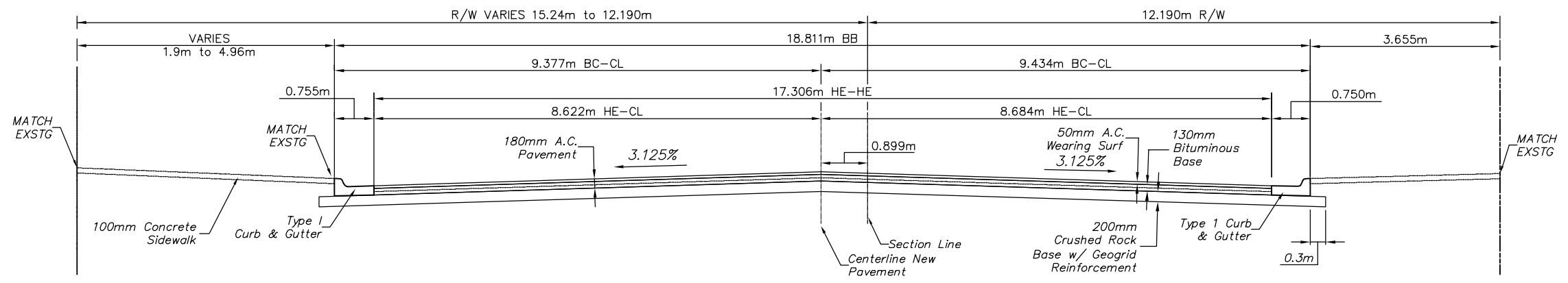


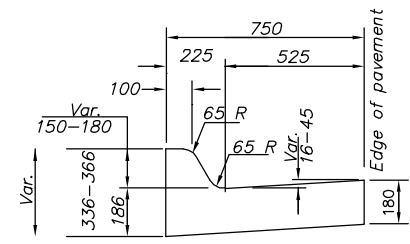
General Notes

FABRIC BASE REINFORCEMENT SHALL BE B X 1100 BY TENSAR CORPORATION OR LBO201 BY TENAX CORPORATION OR APPROVED EQUAL. FABRIC BASE REINFORCEMENT SHALL BE INSTALLED IN ACCORDANCE WITH MANUFACTURER'S RECOMMENDATIONS.

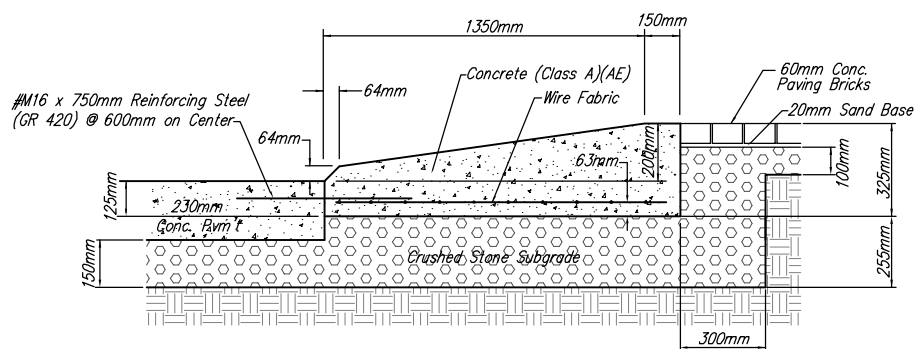
ROCK BASE IS TO BE COMPACTED AND SMOOTHED WITH A STEEL FACED ROLLER PRIOR TO PLACEMENT OF ASPHALT. TACK COAT WILL NOT BE APPLIED TO ROCK. THE MAXIMUM JOINT LENGTH ALLOWED WILL BE LIMITED TO 12'.



**TYPICAL SECTION 18.8m BB PVMT
DOUGLAS AVE**
BL STA 1+934.384 to STA 1+979.918

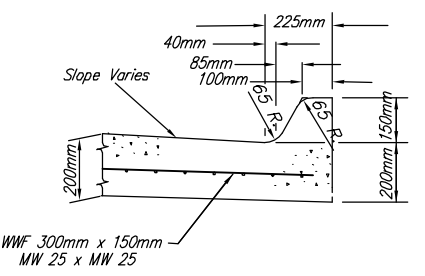


**TYPICAL SECTION
COMBINED CURB & GUTTER - STD CITY (750 mm WIDTH)**

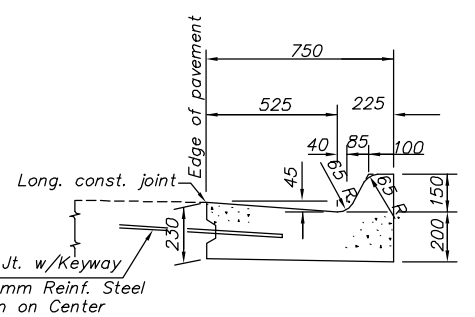


CONCRETE MEDIAN NOSE DETAIL

Not to Scale
Additional Concrete (Class A) & Reinforcing Steel needed to Construct Conc. Median Nose Section shall be SUBSIDIARY to the Bid Item Curb and Gutter (Combined) (Type III) (200mm).
Additional Thickened Crushed Stone Subgrade Beneath Conc. Median Nose Section shall be SUBSIDIARY to Bid Item Crushed Stone Subgrade (200mm).

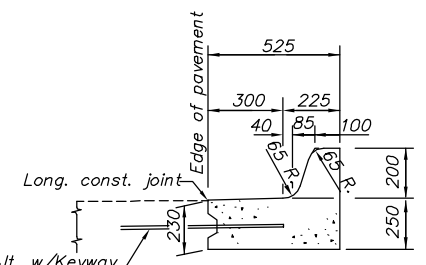


MONOLITHIC EDGE CURB (150mm) DETAIL



**TYPICAL SECTION
COMBINED CURB & GUTTER - TYPE I (750 mm WIDTH)**

Long. Const. Jt. w/Keyway & #M13 x 600mm Reinf. Steel @ 750mm on Center



**TYPICAL SECTION
COMBINED CURB & GUTTER - TYPE III (525 mm WIDTH)**

Long. Const. Jt. w/Keyway & #M13 x 600mm Reinf. Steel @ 750mm on Center

CRUSHED ROCK GRADATION REQUIREMENTS
PERCENT OF AGGREGATE RETAINED

2-1/2"	0
3/4"	20 - 60
#4	50 - 80
#40	80 - 94
#200	90 - 98

ROCK QUALITY SHALL CONFORM TO THE REQUIREMENTS SPECIFIED BY THE KDOT 1990 EDITION STANDARD SPECIFICATION SUBSECTION 1102 FOR DURABILITY CLASS I.



PROJECT NUMBER 472-83862	SHEET NAME TypSec03	ENGINEERING DIRECTORY F:\Eng\Hillside
DESIGN JFB	DRAWN Sonny	APPROVED JFB
DATE May 2006	SCALE None	BAUGHMAN NO 01-03-E947

CAPITAL IMPROVEMENT PROJECT
**TYPICAL PAVEMENT SECTION
FOR DOUGLAS AVENUE**

BAUGHMAN COMPANY, P.A.
ENGINEERING, SURVEYING, & PLANNING
316-262-7271 • 315 ELLIS • WICHITA, KANSAS 67211