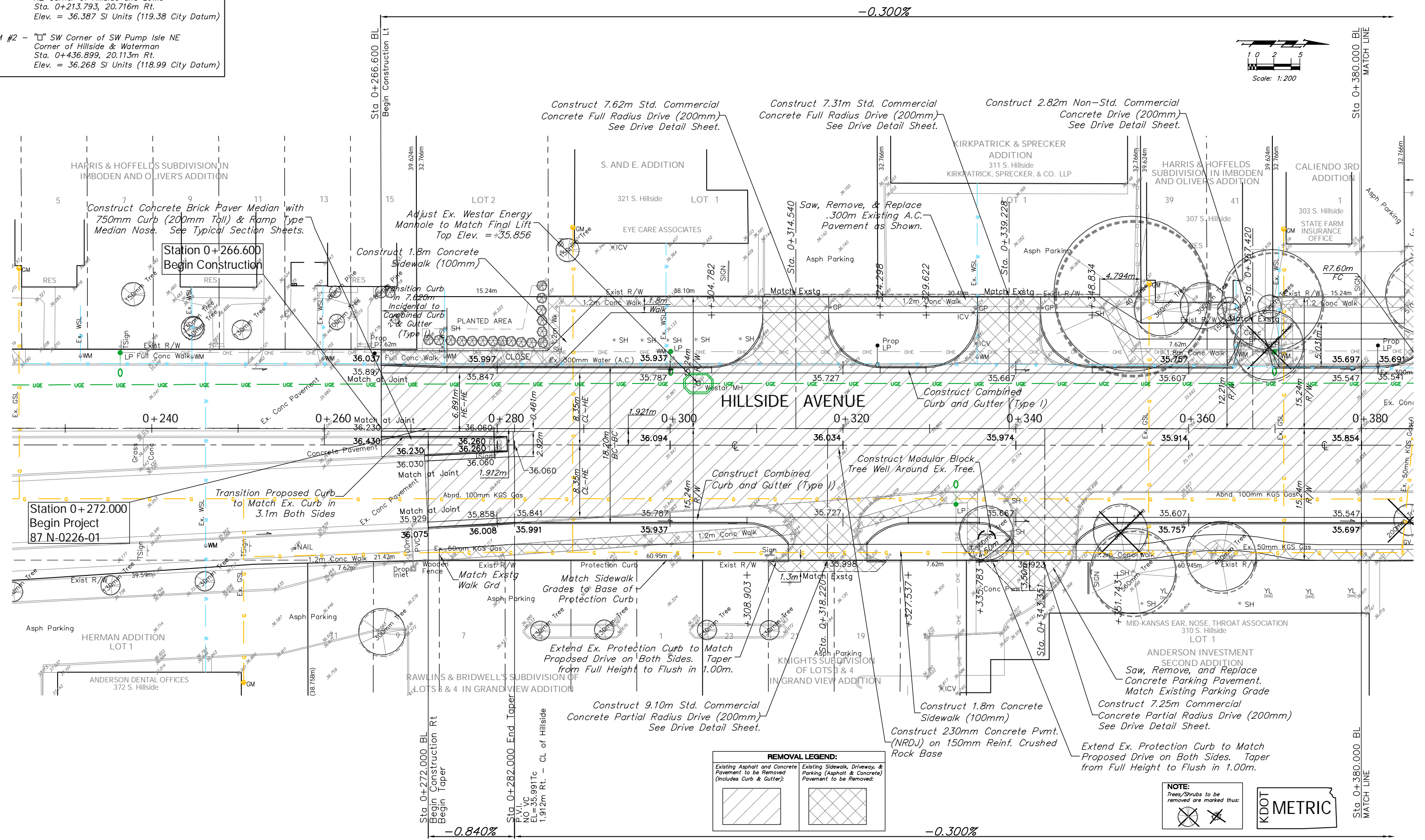


**BENCHMARK**  
 BM #1 - "□" Top of Curb SW Corner of Parking Lot NE Corner of Hillside and Lewis Sta. 0+213.793, 20.716m Rt. Elev. = 36.387 SI Units (119.38 City Datum)  
 BM #2 - "□" SW Corner of SW Pump Isle NE Corner of Hillside & Waterman Sta. 0+436.899, 20.113m Rt. Elev. = 36.268 SI Units (118.99 City Datum)

FHWA REGION NO.	STATE	PROJECT NO.	FISCAL YEAR	SHEET NO.	TOTAL SHEETS
7	KANSAS	87 N-0226-01	2006	11	118



**REMOVAL LEGEND:**

	Existing Asphalt and Concrete Pavement to be Removed (Includes Curb & Gutter):
	Existing Sidewalk, Driveway, & Parking (Asphalt & Concrete) Pavement to be Removed:

**NOTE:**  
 Trees/Shrubs to be removed are marked thus:

**KDOT METRIC**



PROJECT NUMBER 472-83862		SHEET NAME PAV01		ENGINEERING DIRECTORY F:\HillsideLand\dwg	
DESIGN ATD	DRAWN Sonny	APPROVED JFB	DATE May 2006	SCALE Noted	BAUGHMAN NO 01-03-E947

CAPITAL IMPROVEMENT PROJECT  
**HILLSIDE AVENUE PAVING**  
 Sta. 0+266.600 to Sta. 0+380.000

**BAUGHMAN COMPANY, P.A.**  
 ENGINEERING, SURVEYING, & PLANNING  
 316-262-7271 • 315 ELLIS • WICHITA, KANSAS 67211

SHEET 11 OF 118