

BENCHMARKS:
 BM #6 - 1" NW Corner of Walk North of Fire Sta. #5
 SW Corner of Hillside & 2nd
 Sta. 39+51.28, 64.79 feet Lt.
 Elev. = 1320.95 City Datum
 BM #7 - 1" NE Corner of first step of Bldg. #357
 SW Corner of Hillside & 3rd
 Sta. 46+24.29, 54.58 feet Lt.
 Elev. = 1327.99 MSL

Abandon Existing 12" Water Line In Place In Accordance With City of Wichita Specs. Cap All Loose Ends. All Services Must Be Connected To New Main Prior To Abandonment.

W.L. Sta. 26+82.14, Line 1 =
 W.L. Sta. 0+00.00, Begin Line 11=
 B.L. Sta. 39+65.07, 21.98' Lt.
 Install 1-12" x 8" CIMJ Anchored Tee (W)
 Install 1-8" Valve Assy. (Gate Valve)
 Valve Box Elev. = 1321.60

Remove & Salvage Ex. Fire Hydrant & Valve Box. Deliver to City of Wichita
 Install 1-6" MJ Cap On FH Branch

Install 28.93 L.F. 12" Pipe

W.L. Sta. 27+11.07, Line 1 =
 W.L. Sta. 0+00.00, Begin Line 12 =
 B.L. Sta. 39+94.00, 21.98' Lt.
 Install 1-12" x 12" CIMJ Tee (E)
 Install 1-12" Anch Valve Assy. (Butterfly Valve)(E)
 Install 1-12" Valve Assy. (Butterfly Valve)(S)
 Valve Box Elev. = 1321.61

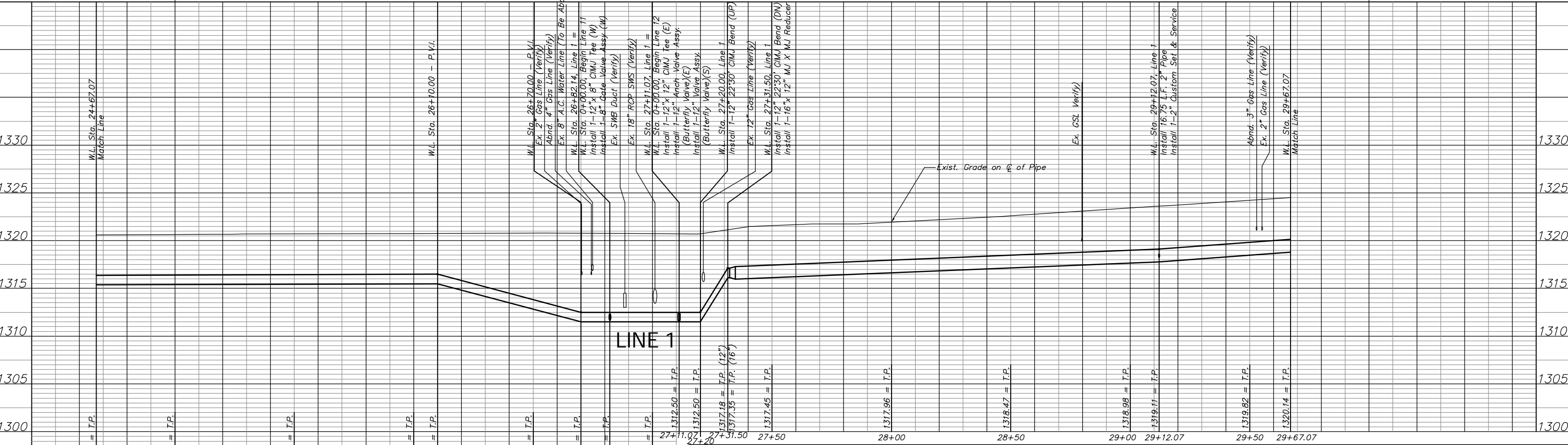
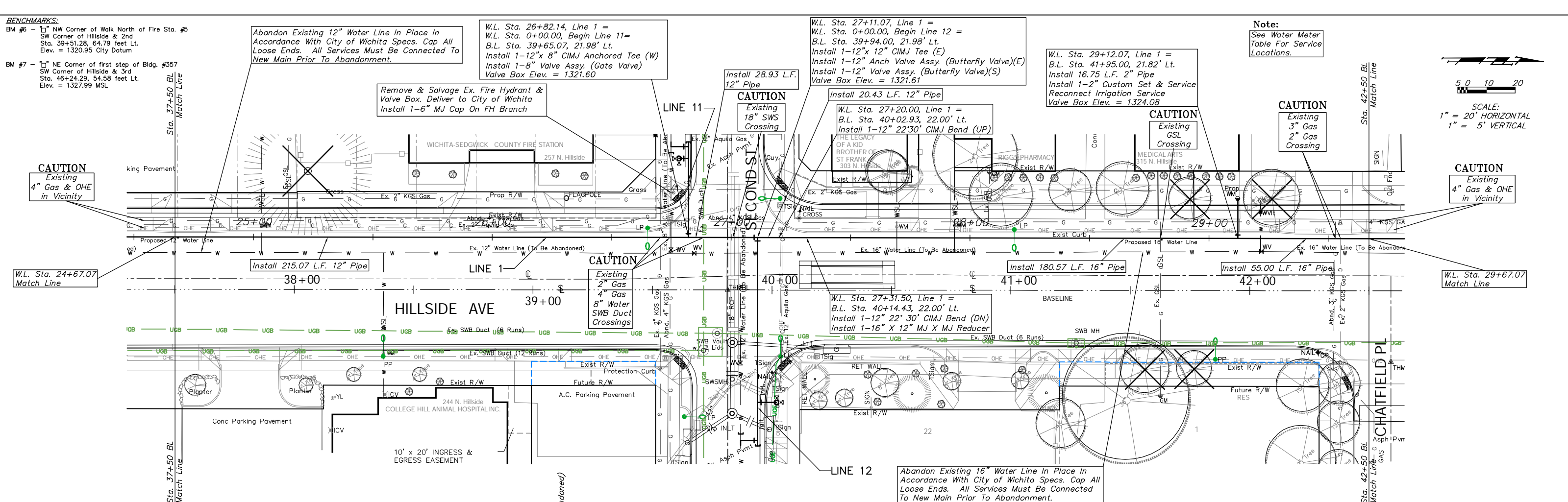
W.L. Sta. 29+12.07, Line 1 =
 B.L. Sta. 41+95.00, 21.82' Lt.
 Install 16.75 L.F. 2" Pipe
 Install 1-2" Custom Set & Service
 Reconnect Irrigation Service
 Valve Box Elev. = 1324.08

Note:
 See Water Meter Table For Service Locations.

SCALE:
 1" = 20' HORIZONTAL
 1" = 5' VERTICAL

CAUTION
 Existing 4" Gas & OHE in Vicinity

CAUTION
 Existing 4" Gas & OHE in Vicinity



PROJECT NUMBER 448-89557		SHEET NAME H206		ENGINEERING DIRECTORY F:\Eng\Hillside\Water	
DESIGN ATD	DRAWN ATD	APPROVED JFB	DATE May 2006	SCALE NOTED	BAUGHMAN NO 01-03-E947

CAPITAL IMPROVEMENT PROJECT
HILLSIDE WATERLINE IMPROVEMENTS
 Line 1, W.L. Sta. 24+67.07 to W.L. Sta. 29+67.07
 HILLSIDE AVENUE - KELLOGG TO 3RD STREET NORTH

BAUGHMAN COMPANY, P.A.
 ENGINEERING, SURVEYING, & PLANNING
 316-262-7271 • 315 ELLIS • WICHITA, KANSAS 67211

SHEET
 OF
 52
 118