

**BENCHMARKS:**

BM #3 - "T" South end of first step of Hillside Baptist Church, NW Corner of Hillside & English. Sta. 20+14.20, 36.65 feet Lt. Elev. = 1307.57 MSL

BM #4 - "T" Top of Curb of SW Parking Lot NW Corner of Hillside & Douglas. Sta. 26+49.73, 29.60 feet Lt. Elev. = 1312.17 MSL

W.L. Sta. 2+92.35, Line 7 =  
B.L. Sta. 66+97.87, 4.05' Rt.  
Deflect Pipe 1'24'51" (Up)

W.L. Sta. 3+10.57, Line 7 =  
B.L. Sta. 66+79.65, 4.05' Rt.  
Install 1-8" CIMJ Anchored Tee (S)  
Install 1-8" Valve Assy. (S) (Gate Valve)  
Valve Box Elev. 1309.22  
Install 1-8" CIMJ Plug (W)

Install 14.75 L.F. 8" Pipe  
Swabbed with Chlorine

W.L. Sta. 3+25.32, End Line 7 =  
B.L. Sta. 66+79.65, 18.80' Rt.  
Install 1-8" 22.5' CIMJ Bend (Up)

W.L. Sta. 3+30.86, End Line 7 =  
B.L. Sta. 66+79.65, 24.08' Rt.  
Install 1-8" 90° CIMJ Bend (W)  
Connect to Existing 8" Water Line  
Install 1-8" Cap (E)

Abandon Existing 8" Water Line In Place In Accordance With City of Wichita Specs. Cap All Loose Ends. All Services Must Be Connected To New Main Prior To Abandonment.

W.L. Sta. 0+53.00, Line 7 =  
B.L. Sta. 69+37.08, 5.42' Rt.  
Install 1-Fire Hydrant Assy. (N)  
L = 4.00'  
Valve Box Elev. 1313.83  
Bury Line Elev. 1313.83

W.L. Sta. 0+80.00, Line 7 =  
B.L. Sta. 69+10.22, 4.05' Rt.  
Deflect Pipe 2'44'15" (S)  
& 2'07'03" (Dn)

W.L. Sta. 0+00.00, Begin Line 6 =  
W.L. Sta. 0+00.00, Begin Line 7 =  
W.L. Sta. 13+57.14 Line 1 =  
B.L. Sta. 26+45.00, 9.86' Lt. =  
B.L. Sta. 70+00.00, 8.13' Rt.  
Connect to Valves on Line 1  
Extend 8" Water Main East  
Extend 8" Water Main West  
Deflect West Pipe 2'44'15" (N)

W.L. Sta. 0+41.61, Line 6 =  
B.L. Sta. 70+31.74, 8.00' Rt.  
Install 1-8" 11.25' CIMJ Bend (Up)  
Rolled 28'37'17" (N)

Install 23.3 L.F. 8" Pipe

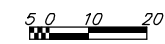
W.L. Sta. 0+64.61, Line 6 =  
B.L. Sta. 70+54.65, 6.03' Rt.  
Install 1-8" 11.25' CIMJ Bend (Dn)

Install 14.00 L.F. 8" Pipe

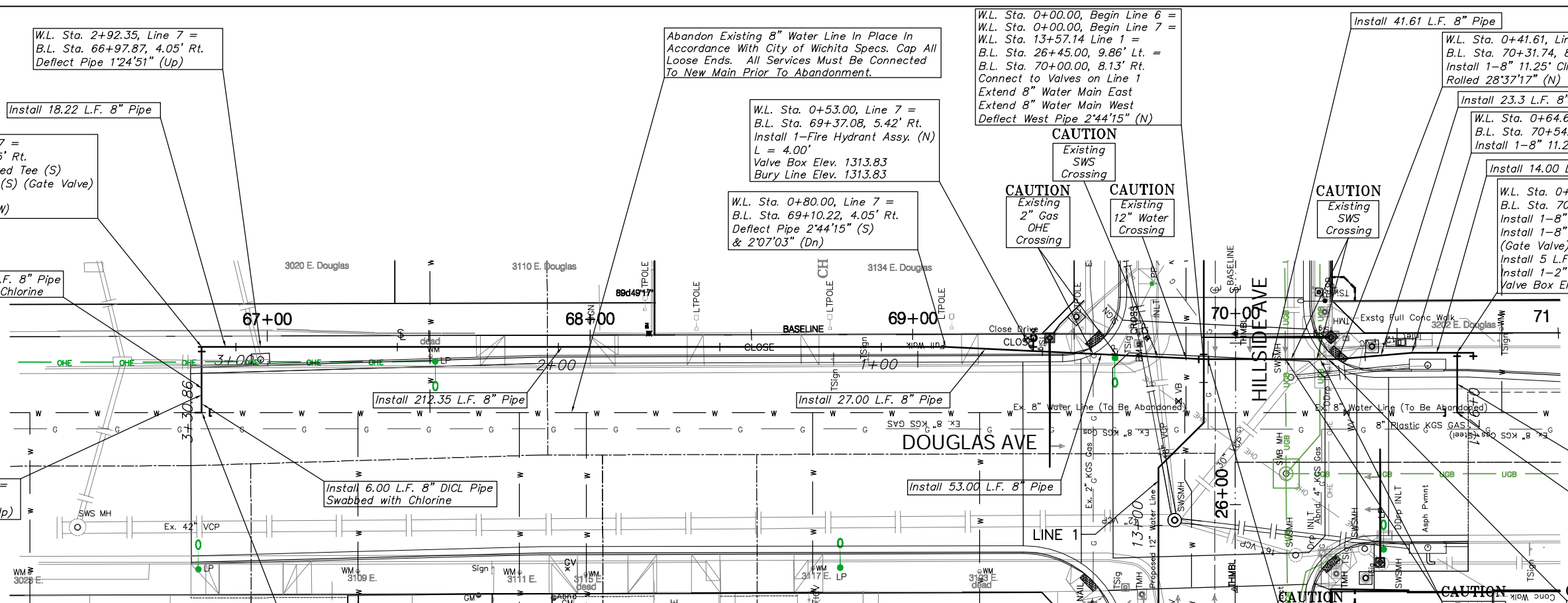
W.L. Sta. 0+78.61, Line 6 =  
B.L. Sta. 70+68.65, 6.04' Rt.  
Install 1-8" CIMJ Anchored Tee (S)  
Install 1-8" Valve Assy. (S)  
(Gate Valve)  
Install 5 L.F. 8" DICL Pipe (E)  
Install 1-2" Blowoff Assy. (E)  
Valve Box Elev. = 1316.75

Install 18.50 L.F. 8" Pipe  
Swabbed with Chlorine

W.L. Sta. 0+97.11, End Line 6 =  
B.L. Sta. 70+68.65, 24.53' Rt.  
Install 1-8" 90° CIMJ Bend (E)  
Connect to Existing 8" Water Line  
Install 1-8" MJ Cap (W)

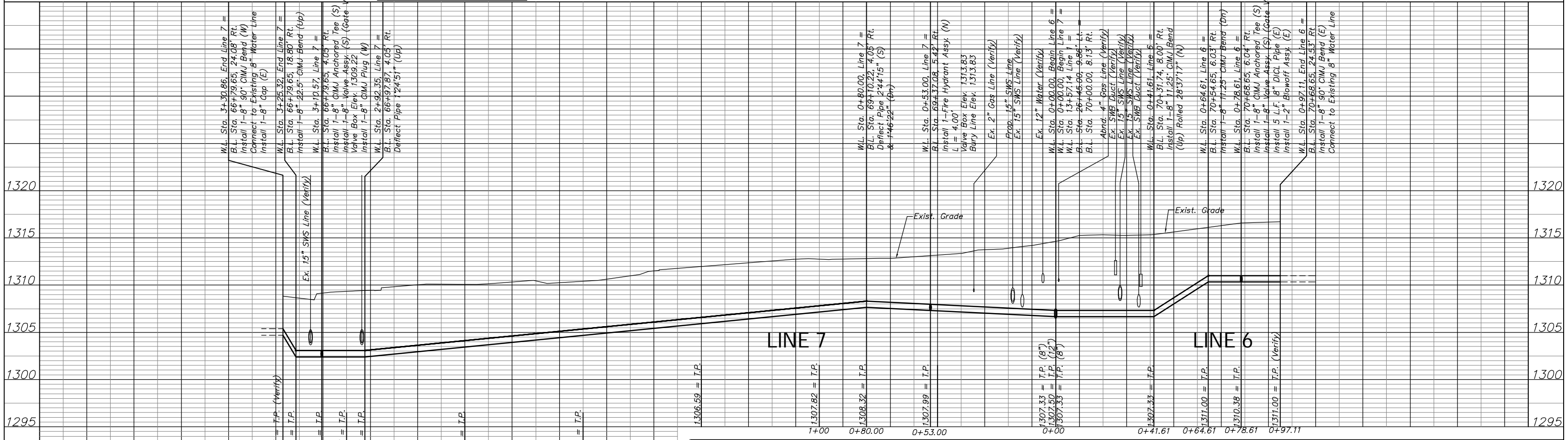


SCALE:  
1" = 20' HORIZONTAL  
1" = 5' VERTICAL



LINE 7

LINE 6



PROJECT NUMBER 448-89557		SHEET NAME H209a		ENGINEERING DIRECTORY F:\Eng\Hillside\Water	
DESIGN ATD	DRAWN ATD	APPROVED JFB	DATE May 2006	SCALE NOTED	BAUGHMAN NO 01-03-E947

CAPITAL IMPROVEMENT PROJECT  
**HILLSIDE WATERLINE IMPROVEMENTS**  
Line 6 & Line 7  
HILLSIDE AVENUE - KELLOGG TO 3RD STREET NORTH

**BAUGHMAN COMPANY, P.A.**  
ENGINEERING, SURVEYING, & PLANNING  
316-262-7271 • 315 ELLIS • WICHITA, KANSAS 67211

SHEET  
OF  
55  
118