

Lat. 403, Four Mile Creek Sewer, SANITARY SEWER IMPROVEMENTS

to serve

Belle Terre South 2nd Addition

CITY OF WICHITA, KANSAS

James L. Armour, P.E. City Engineer

Project Number

468-84311

O.C.A. Number

744222

**MILE
SECTION
6447**

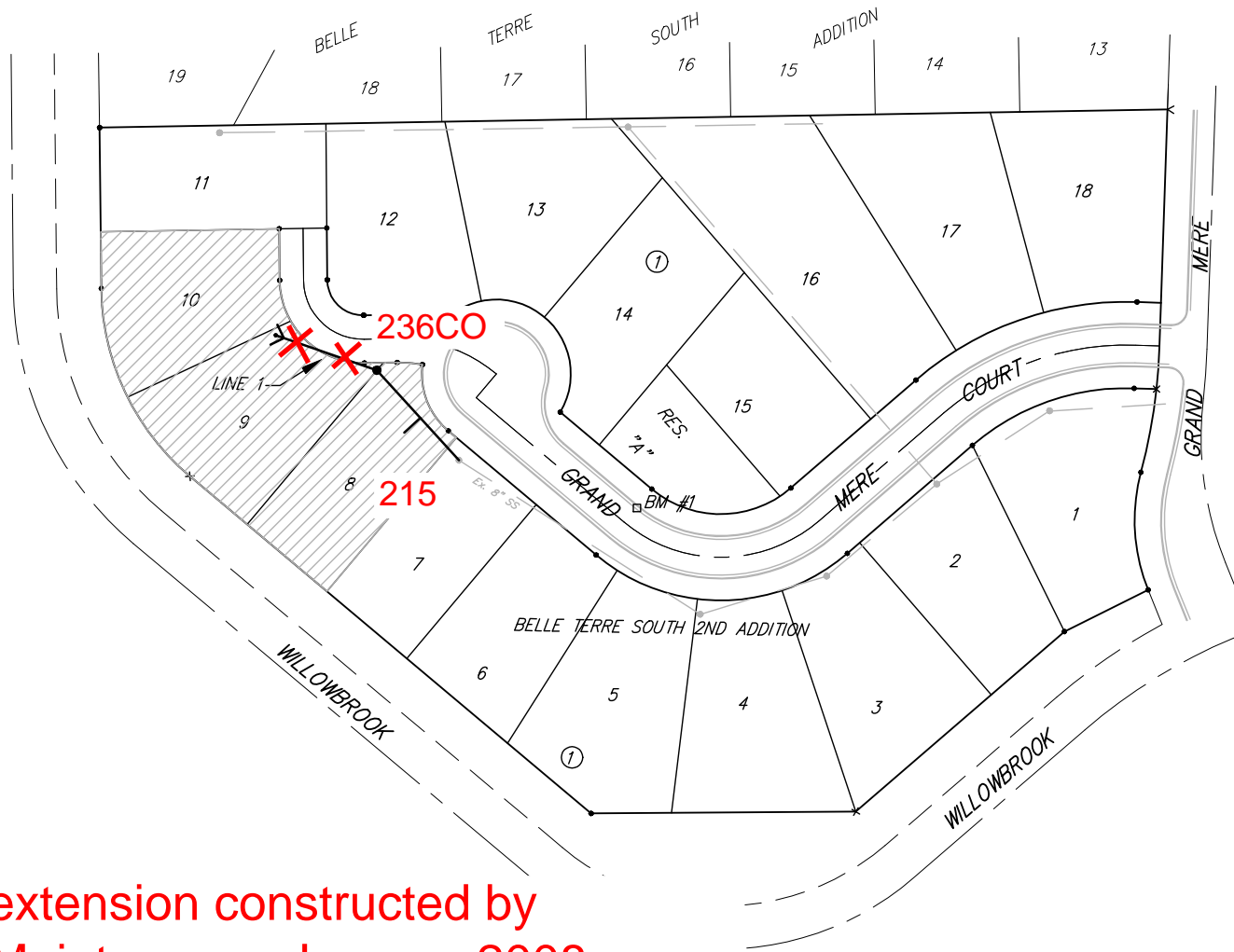
GENERAL NOTES:

- Contractor will be required to provide notice to utility companies a minimum of forty-eight (48) hours prior to any excavation, as follows:

Kansas One-Call	687-2470
-----------------	----------

The Contractor must notify the following in case of an emergency:

Cox Communications	262-4270
Kansas Gas Service	1-888-482-4950
Westar Energy	383-8650
Aquila Energy	1-800-303-0357
SBC	268-2245
City of Wichita Water Dept.	268-4563
City of Wichita Sewer Maint.	268-4024
City of Wichita Storm Sewer Maint.	268-4094
City of Wichita Traffic Maint.	268-4034
Conoco Phillips Pipeline	1-877-267-2290
Southern Star Pipeline	529-6600
Kinder Morgan Pipeline	1-888-844-5658
- Underground utility service lines and overhead utility pole lines are to be adjusted as necessary by others prior to construction unless the plans specifically call for their adjustment by the Contractor or unless the plans specifically identify a utility to be adjusted by its owner during construction. Existing utilities and their location, as shown on the plans, represent the best information obtainable for design. The Contractor will be required to work around existing utilities within the right-of-way which do not conflict with proposed construction.
- Trees and shrubs in public right-of-way which are in direct conflict with proposed new construction shall be removed by the Contractor with the Engineer's approval. Trees and shrubs which are not in direct conflict with proposed new construction shall be saved and protected from damage.
- The Contractor shall give all property owners and/or tenants of developed property abutting the construction of this project a minimum of ten (10) days advance notice prior to start of construction.
- The Contractor shall be responsible for preserving property irons. The Contractor will be required to re-establish any property irons which are damaged or destroyed by his construction operations. Such irons shall be re-established by a licensed land surveyor in accordance with state laws.
- When connecting to existing manhole or stub, the contractor shall reshape manhole bottom or adjust the existing stub's alignment or elevation as necessary. Cost shall be subsidiary to project.
- The Contractor shall be responsible for maintaining continuous flow of sewage through construction. Contractor's proposed method for maintaining sewage flow shall be approved by the Engineer. Cost of maintaining flow of sewage through construction will not be paid for directly and this cost shall be considered as subsidiary to the other pay items of work.
- Contractor shall grade around exposed manholes at a 1:1 slope. Manholes set lower than existing grade shall have 9" berm constructed around manhole to prevent infiltration into sanitary sewer system. Cost of dirt, labor, equipment, etc. to be incidental to cost of manhole.
- The Contractor shall not start work on the project until the Project Inspector is assigned to the project and is present on the sight. Any work done without inspection will be required to be uncovered for inspection.
- All Risers shall be constructed using Method "B."
- All areas disturbed during construction shall be seeded at 300 lbs./acre with Rye Grass immediately following construction in that area. Contractor shall prepare ground per City Specifications.
- Contractor shall be responsible for removal, repair, and replacement of all irrigation systems and landscaping affected during construction. All costs associated with the removal, repair, and replacement of irrigation systems or landscaping shall be included in "Site Clearing & Restoration" bid item.



**Sewer extension constructed by
Sewer Maintenance January 2008.**

NOT AN AS-BUILT / best info available

Benchmark:

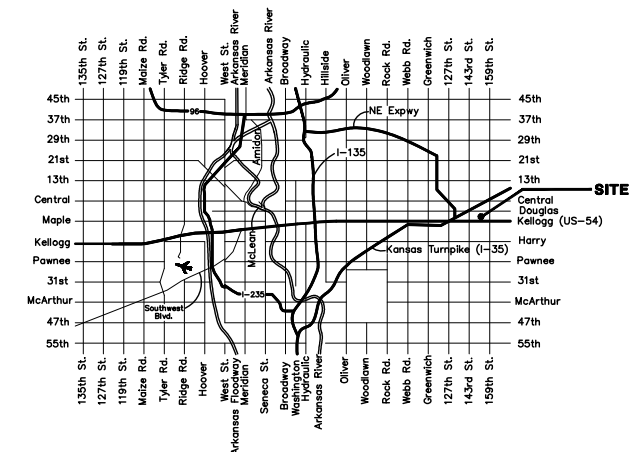
BM #1 "□" Cut in top of curb at PC adjacent to Res. "A", Belle Terre South 2nd Addition.
Elev. = 1308.72 (M.S.L.)

BM #2 "□" Cut in top of curb at NW corner of Lot 23, Block 3, Belle Terre South Addition.
Elev. = 1307.17 (M.S.L.)

BM #3 "□" Cut in top of curb at NE corner of Lot 2, Block 1, Belle Terre South Addition.
Elev. = 1304.39 (M.S.L.)

Sheet Index

Title Sheet	1
Line 1	2
Standard Manhole Detail	3
Manhole Ring & Cover Detail	4
Clean Out Detail	5
Riser Detail	6
Copy of Plat	7



Vicinity Map

Scale: 1" = 60'



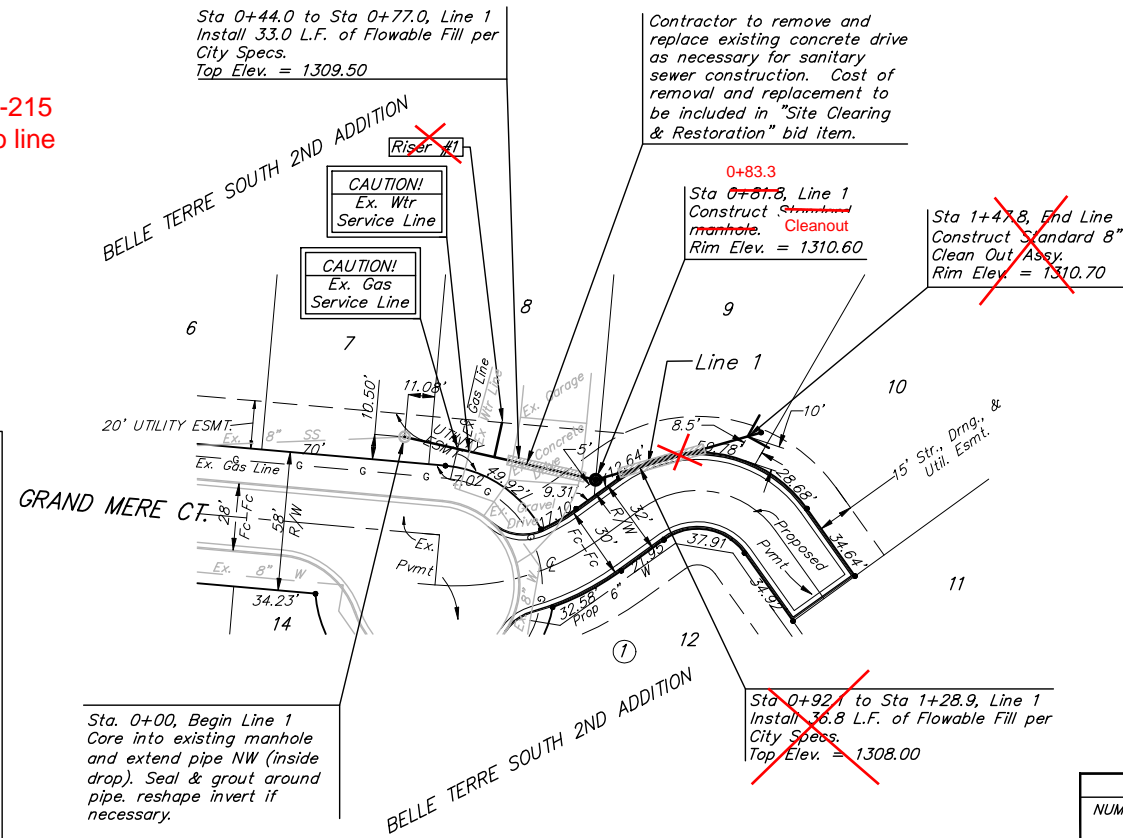
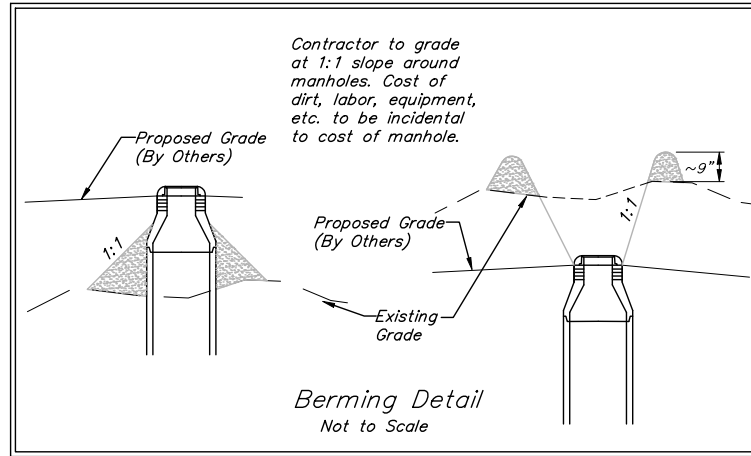
Baughman Company, P.A. 315 Ellis St. Wichita, KS 67211 P 316-262-7271 F 316-262-0149
ENGINEERING | SURVEYING | PLANNING | LANDSCAPE ARCHITECTURE

BENCHMARK:
 BM #1 "□" Cut in top of curb at
 PC adjacent to Res. "A", Belle Terre
 South 2nd Addition.
 Elev. = 1308.72 (M.S.L.)

BM #2 "□" Cut in top of curb at
 NW corner of Lot 23, Block 3, Belle
 Terre South Addition.
 Elev. = 1307.17 (M.S.L.)

BM #3 "□" Cut in top of curb at
 NE corner of Lot 2, Block 1, Belle
 Terre South Addition.
 Elev. = 1304.39 (M.S.L.)

Note: Lot 8 is tapped into MH 6447-215
 (see separate document attached to line
 segment) -LML



NOT AN AS-BUILT
 BEST INFO AVAILABLE - LML

SEWER SERVICE TABLE

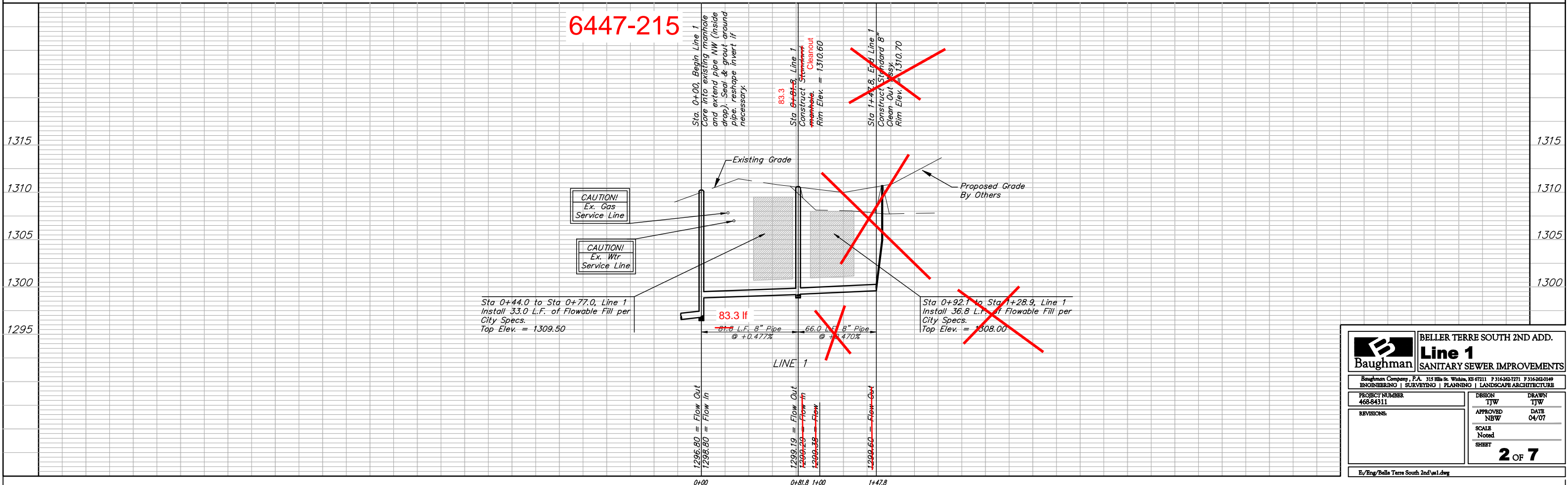
NUMBER	TYPE	LOCATION			FOR INFORMATION ONLY		
		LOT NO.	BLOCK NO.	LINE NO.	STATION\ DIRECTION	APPROXIMATE LENGTH 4" PIPE	
						VERTICAL	HORIZONTAL
1	8" X 4" Tee Saddle	8	1	1	0+38.4/Lt.	8.5'	14.5'

NOTE: Vertical Riser Pipe shall be extended to 2' minimum above ground water elevation and 4' maximum below proposed ground elevation.

No riser

6447-236CO

6447-215



Baughman BELLE TERRE SOUTH 2ND ADD.
Line 1
 SANITARY SEWER IMPROVEMENTS

Baughman Company, P.A. 315 Bill St. William, KS 67111 P 316-882-7271 F 316-882-0149
 ENGINEERING | SURVEYING | PLANNING | LANDSCAPE ARCHITECTURE

PROJECT NUMBER 468-64311	DESIGN TIW	DRAWN TIW
REVISIONS:	APPROVED NBW	DATE 04/07
	SCALE Noted	SHEET 2 OF 7

E:\Eng\Belle Terre South 2nd\ss1.dwg