

LEGEND

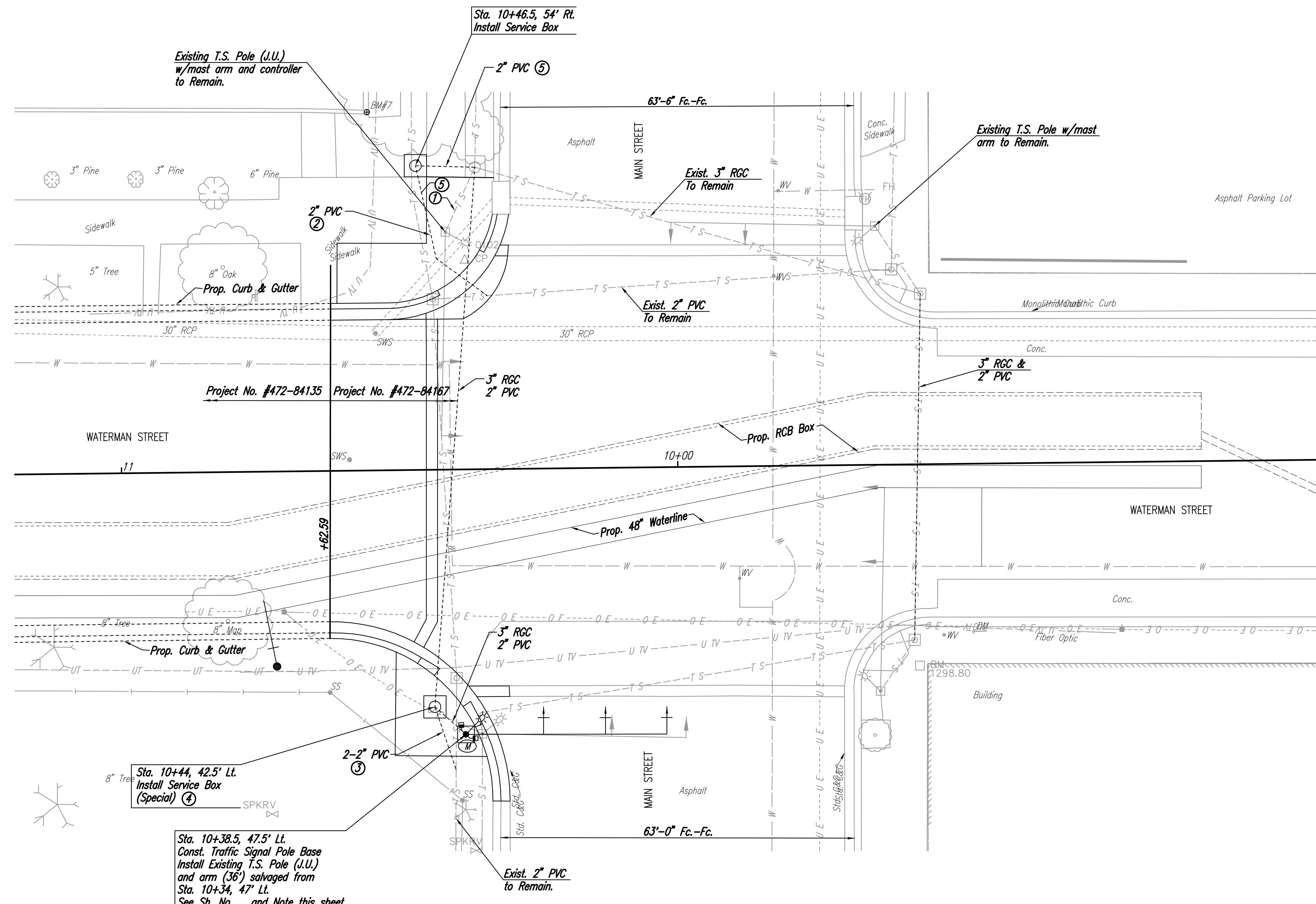
- Traffic Signal Pole with Mast Arm
- Luminaire with Arm
- Traffic Signal Head
- Traffic Signal Head with Backplate
- Pedestrian Signal Head
- Service Box (Pre-Fab)
- Conduit
- Signal Phase
- Signal Pole Reference Number
- Street Name Sign
- Meter

- ① Existing Conduit to Remain
- ② Extend existing 2" PVC conduit to service box Sta. 10+46.5, 45' Rt. for street light wiring connection to east side of Main Street.
- ③ Reroute existing 2" PVC conduit to service box Sta. 10+44, 42.5' Lt. (2 Runs). One conduit shall be used for the future street light system proposed along the west of Main St. south of Waterman St. The second conduit shall be used for future expansion of the T.S. interconnect system.
- ④ Pole #1 and existing equipment attached to pole and arm shall be salvaged and reused. The existing meter shall relocate with pole, however, existing "temporary" drop shall be removed.
- ⑤ Jack or bore under existing sidewalk. Existing Sidewalk to remain.

WIRING NOTES:

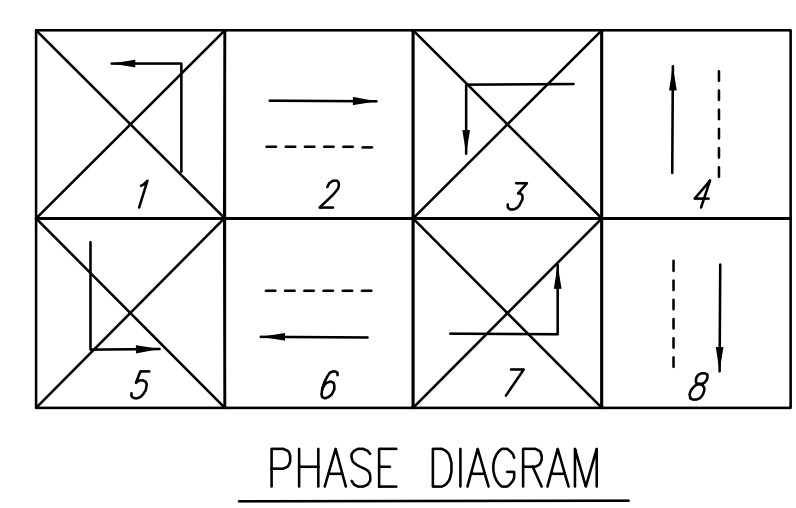
The Contractor shall remove existing traffic signal cabling, interconnect cabling, power and irrigation control cabling from the conduit runs that conflict with construction. Upon installing of new conduit runs, as shown, the cabling shall be reinstalled as required to reinstate signal operation. See Sheet No. 45 for existing cable/wiring diagram. The Contractor shall coordinate with Westar for the installation/reinstallation of street light conductor.

The Contractor shall reinstall traffic signal interconnect cable between the controller and service box Sta. 10+44, 42.5' Lt. Excess cable shall be neatly wound and bundled inside service box for installation by others.

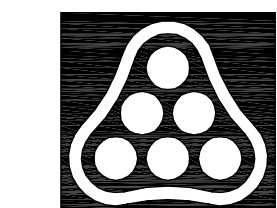


Sta. 10+44, 42.5' Lt.
Install Service Box
(Special) ④

Sta. 10+38.5, 47.5' Lt.
Const. Traffic Signal Pole Base
Install Existing T.S. Pole (J.U.)
and arm (36') salvaged from
Sta. 10+34, 47' Lt.
See Sh. No. _ and Note this sheet



Saved: 05-26-2006 3:44:00 PM by JCA
 Plot Scale: 1"=10'-0" 05-26-2006 4:07:48 PM by JCA
 \\S:\BIDD\2005\05493\02\2006-05-28 to 203\DWG\44-Traffic Signal Plan



No.	Revision	By	Date
DOWNTOWN ARENA SWD OUTFALL PHASE 1 - WATERWALK PORTION TRAFFIC SIGNAL (MAIN ST. & WATERMAN ST.) JAMES L. ARMOUR, P.E. - CITY ENGINEER CITY OF WICHITA PROJECT NO. 468-84167 Professional Engineering Consultants, P.A. 303 S. TOPEKA • WICHITA, KANSAS 67202 316-262-2691 • FAX 316-262-3003			
Designed by	DRC	Job No.	32-05493-002-024
Drawn by	DRC	Date	April, 2006
			Sht. 44 of 47