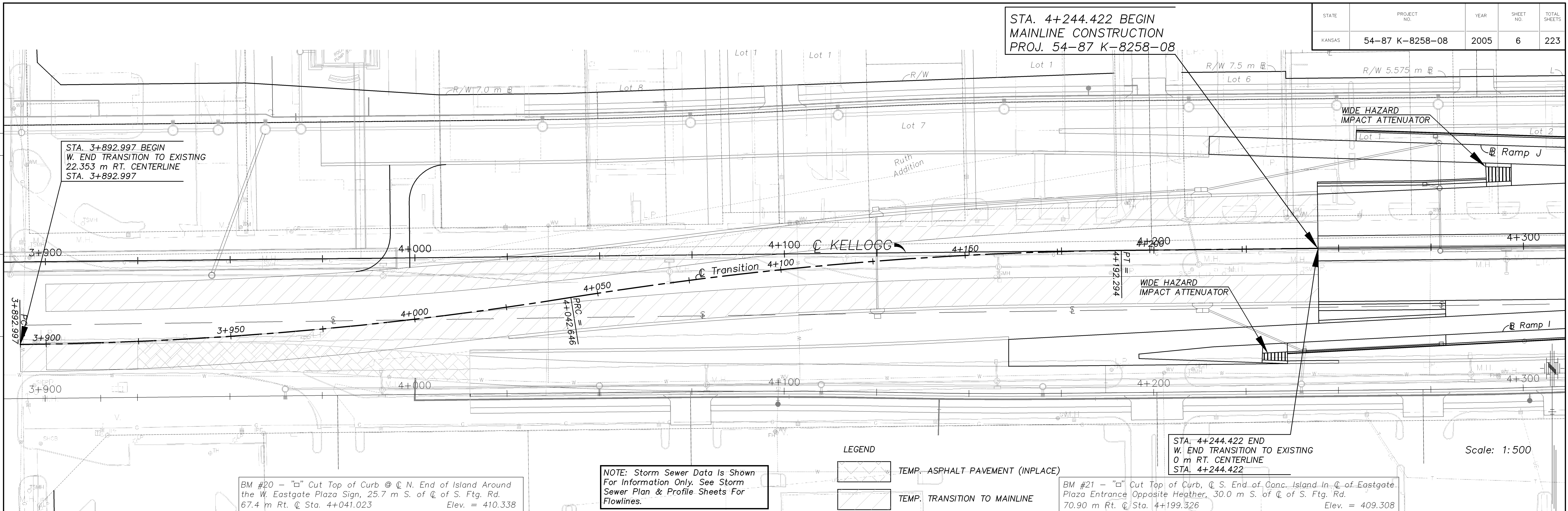


STATE	PROJECT NO.	YEAR	SHEET NO.	TOTAL SHEETS
KANSAS	54-87 K-8258-08	2005	6	223

STA. 4+244.422 BEGIN  
MAINLINE CONSTRUCTION  
PROJ. 54-87 K-8258-08

DATE	BY

REFERENCE NOTED	REFERENCE CHECKED



STA. 3+892.997 BEGIN  
W. END TRANSITION TO EXISTING  
22.353 m RT. CENTERLINE  
STA. 3+892.997

BM #20 - "□" Cut Top of Curb @ N. End of Island Around the W. Eastgate Plaza Sign, 25.7 m S. of C. of S. Ftg. Rd. 67.4 m Rt. @ Sta. 4+041.023 Elev. = 410.338

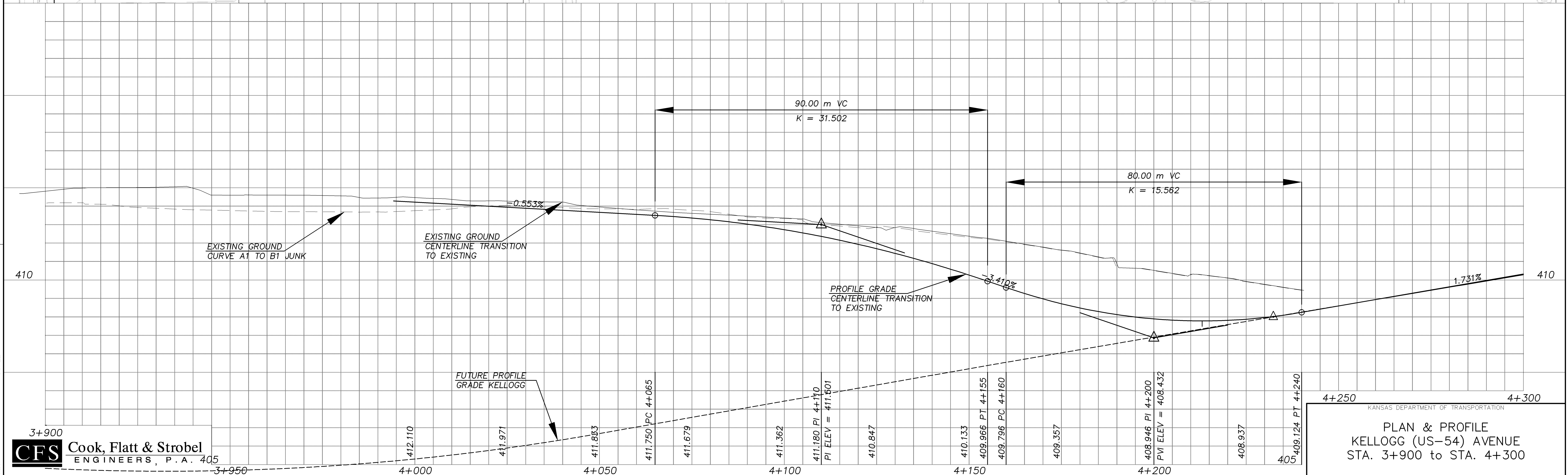
NOTE: Storm Sewer Data Is Shown For Information Only. See Storm Sewer Plan & Profile Sheets For Flowlines.

LEGEND  
 TEMP. ASPHALT PAVEMENT (INPLACE)  
 TEMP. TRANSITION TO MAINLINE

STA. 4+244.422 END  
W. END TRANSITION TO EXISTING  
0 m RT. CENTERLINE  
STA. 4+244.422

BM #21 - "□" Cut Top of Curb, @ S. End of Conc. Island In C. of Eastgate Plaza Entrance Opposite Heather, 30.0 m S. of C. of S. Ftg. Rd. 70.9 m Rt. @ Sta. 4+199.326 Elev. = 409.308

Scale: 1:500



4+250 KANSAS DEPARTMENT OF TRANSPORTATION 4+300

PLAN & PROFILE  
KELLOGG (US-54) AVENUE  
STA. 3+900 to STA. 4+300

**CFS** Cook, Flatt & Strobel  
ENGINEERS, P.A. 405