

F.H.W.A. REGION NO.	STATE	PROJECT NO.	YEAR	SHEET NO.	TOTAL SHEETS
7	KANSAS	54-87 K-8258-08	2005	11	223

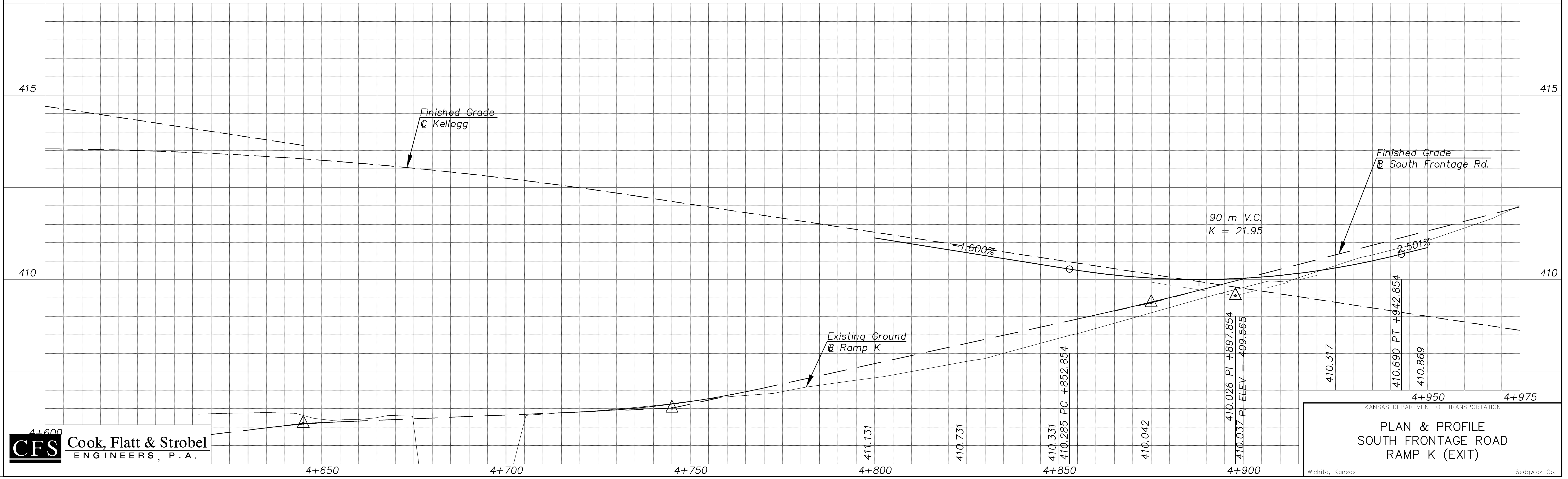
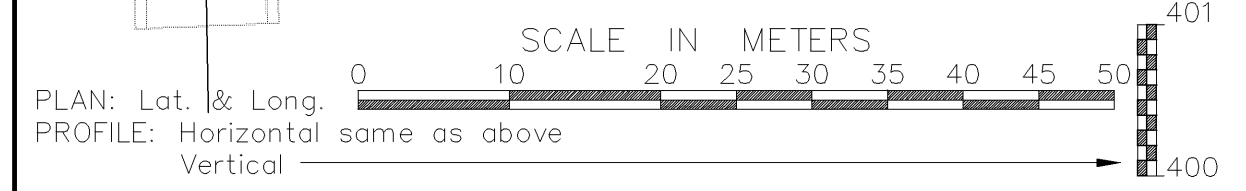
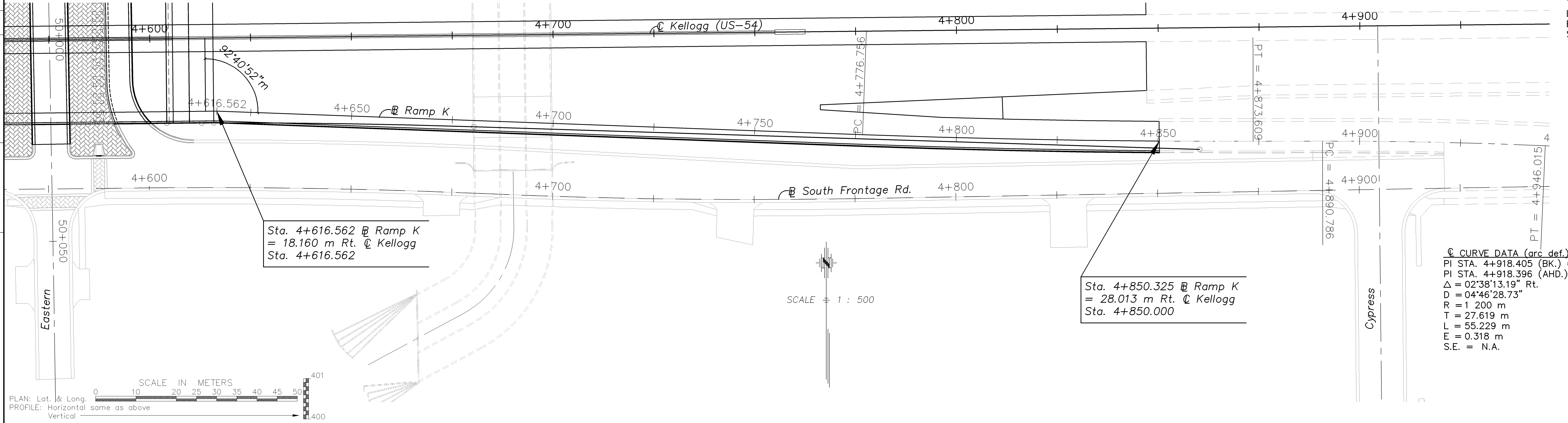
☉ CURVE DATA (arc def.)
 PI STA. 4+825.188 (BK.) =
 PI STA. 4+825.177 (AHD.)
 $\Delta = 02^{\circ}13'10.9''$ Lt.
 $D = 02^{\circ}17'30.59''$
 $R = 2.500$ m
 $T = 48.432$ m
 $L = 96.852$ m
 $E = 0.469$ m
 $S.E. = N.A.$

☉ CURVE DATA (arc def.)
 PI STA. 5+009.487 (BK.) =
 PI STA. 5+009.457 (AHD.)
 $\Delta = 03^{\circ}30'38.88''$ Lt.
 $D = 03^{\circ}49'10.99''$
 $R = 1.500$ m
 $T = 45.971$ m
 $L = 91.913$ m
 $E = 0.714$ m
 $S.E. = N.A.$

☉ CURVE DATA (arc def.)
 PI STA. 4+918.405 (BK.) =
 PI STA. 4+918.396 (AHD.)
 $\Delta = 02^{\circ}38'13.19''$ Rt.
 $D = 04^{\circ}46'28.73''$
 $R = 1.200$ m
 $T = 27.619$ m
 $L = 55.229$ m
 $E = 0.318$ m
 $S.E. = N.A.$

DATE	BY

REFERENCE NOTED	REFERENCE CHECKED



Drawn by:
 Plotted:
 File:
 SCALE 1:500

CFS Cook, Flatt & Strobel
 ENGINEERS, P.A.

KANSAS DEPARTMENT OF TRANSPORTATION
PLAN & PROFILE
SOUTH FRONTAGE ROAD
RAMP K (EXIT)
 Wichita, Kansas Sedgwick Co.