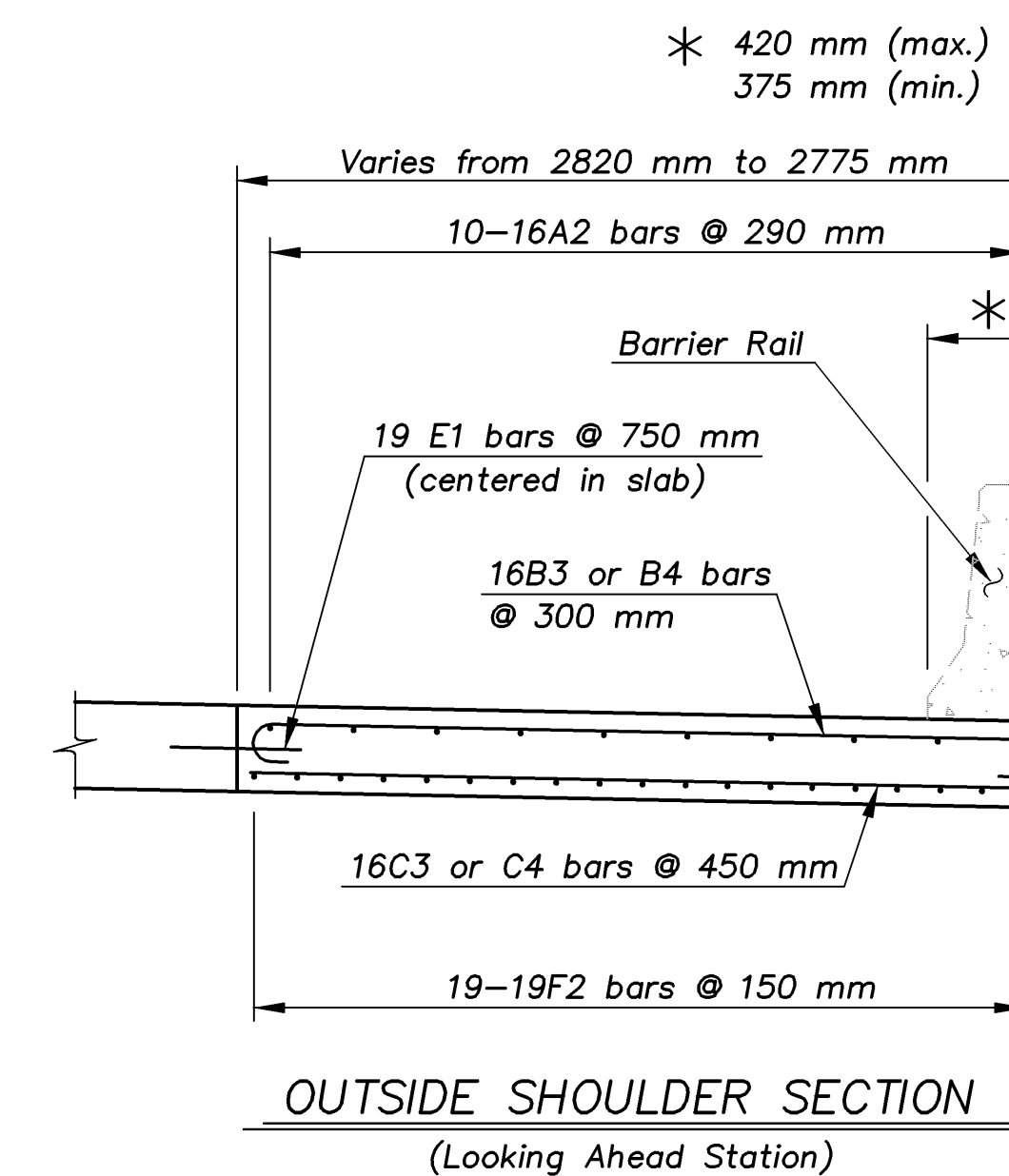
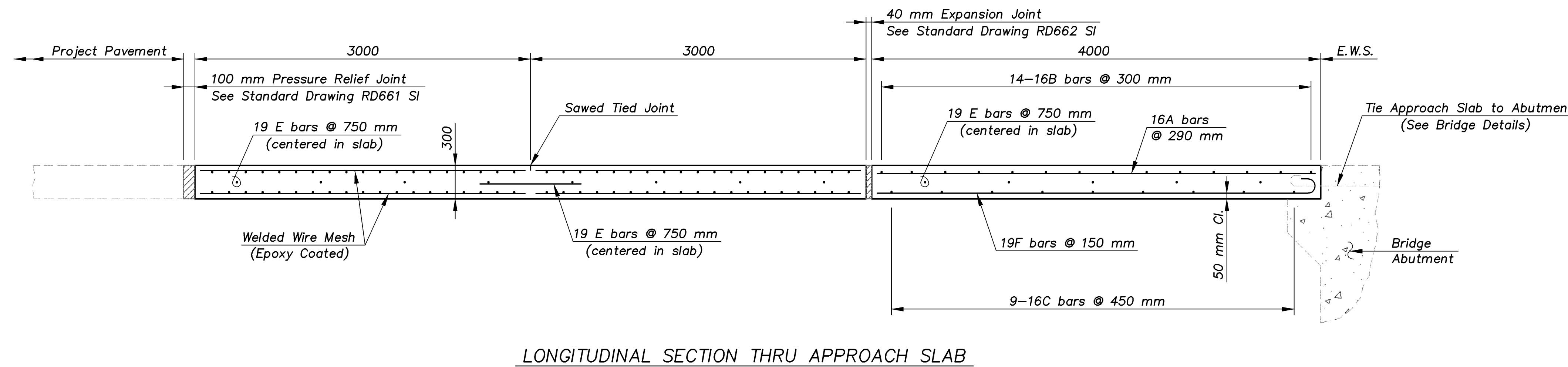
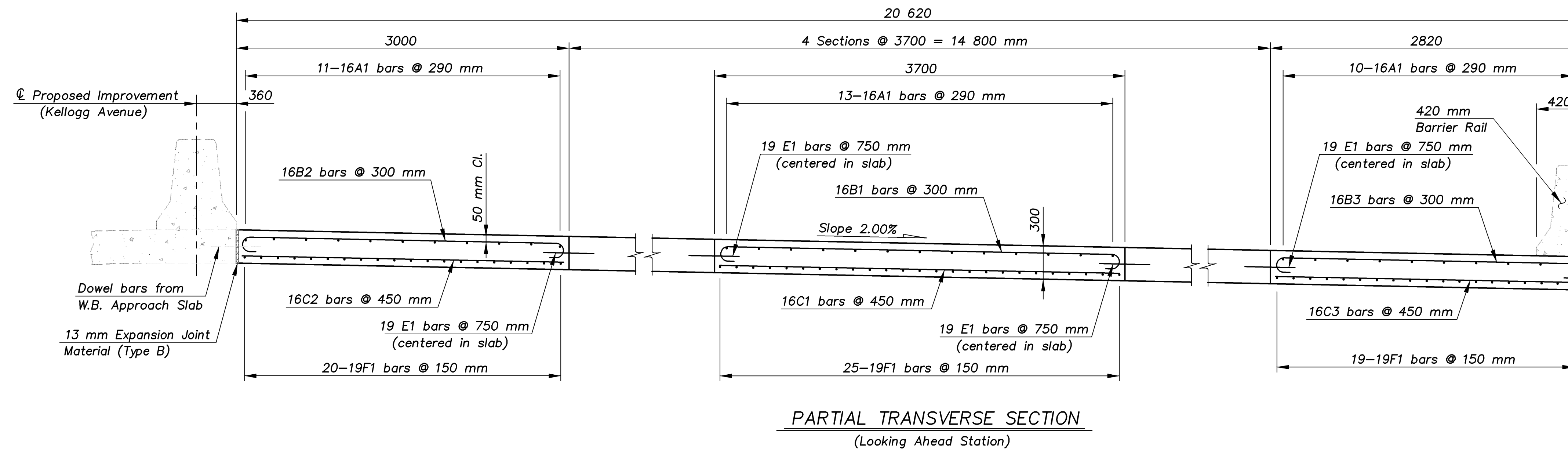
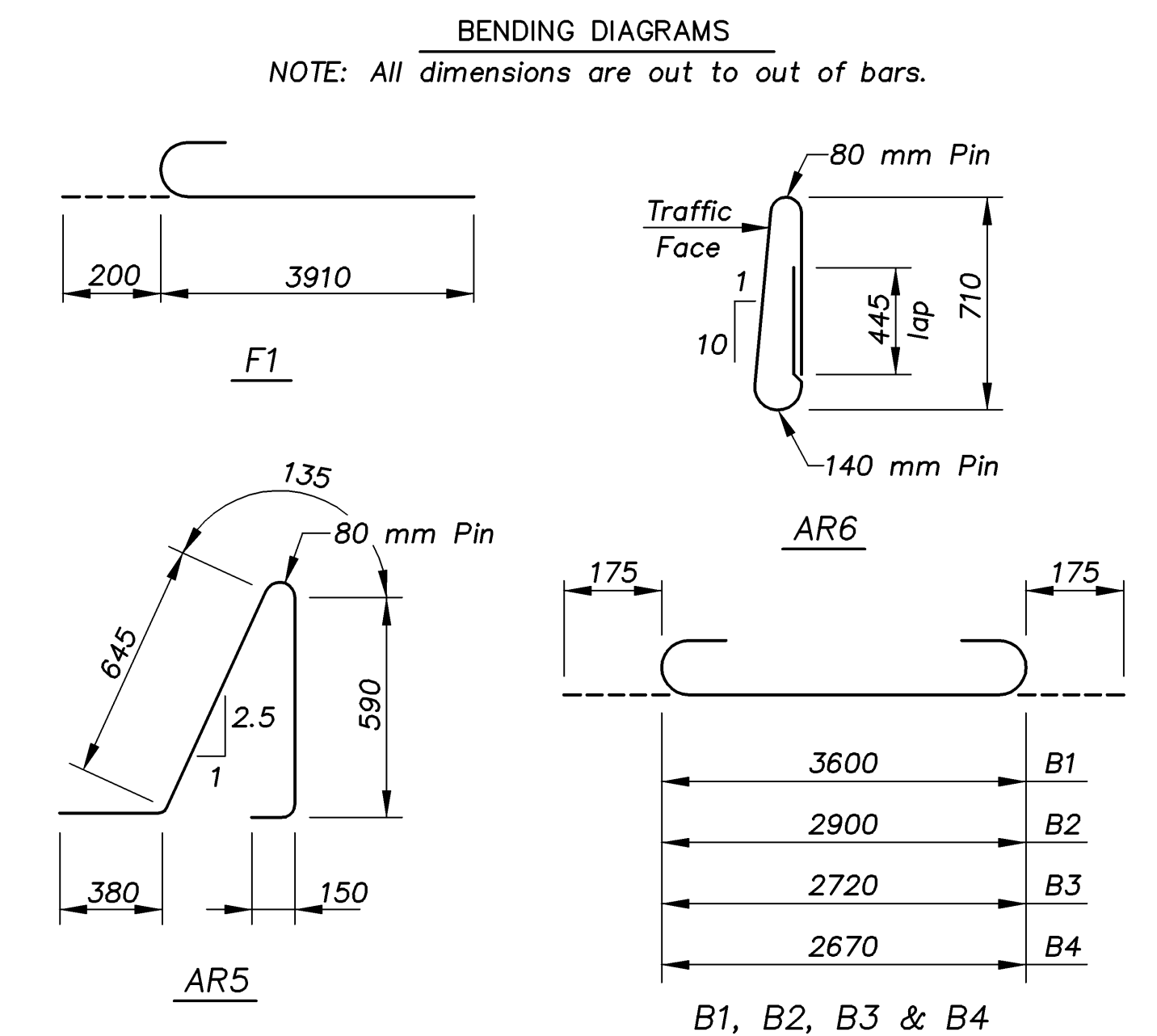


E.F. INDICATES EACH FACE.
N.F. INDICATES NEAR FACE.
F.F. INDICATES FAR FACE.

STATE	PROJECT NO.	YEAR	SHEET NO.	TOTAL SHEETS
KANSAS	54-87 K-8258-08	2005	33	223



BILL OF REINFORCING STEEL							
MARK	STRAIGHT BARS			BENT BARS			LENGTH
	SIZE	NO.	LENGTH	MARK	SIZE	NO.	
AR1	19	1	5900	AR5	16	34	1900
AR2	19	1	3900	AR6	16	34	1980
AR7	13	6	5900				
AR8	13	6	3900				
"FOR INFORMATION ONLY"							
E1	19	93	900	F1	19	139	4110
F2	19	38	2900				
				B1	16	56	3950
A1	16	73	3900	B2	16	14	3250
A2	16	20	2900	B3	16	24	3070
C1	16	36	3600	B4	16	10	3020
C2	16	9	2900				
C3	16	16	2720				
C4	16	7	2670				




KANSAS DEPARTMENT OF TRANSPORTATION
BR. NO. 54-87-31.56(705) E.B. STA. 4+575.138

**SPECIAL CONCRETE
APPROACH PAVEMENT**

E.B. KELLOGG AVENUE OVER EASTERN

Proj. No. 54-87 K-8258-08 SEDGWICK COUNTY


Cook, Flatt & Strobel
 ENGINEERS, P. A.

DESIGNED	R.S.C.	SCALE
DETAILED	T.R.G.	DATE
QUANTITIES	T.R.G.	SHEET 2 OF 3

EASTERN/APPROACH 1:100