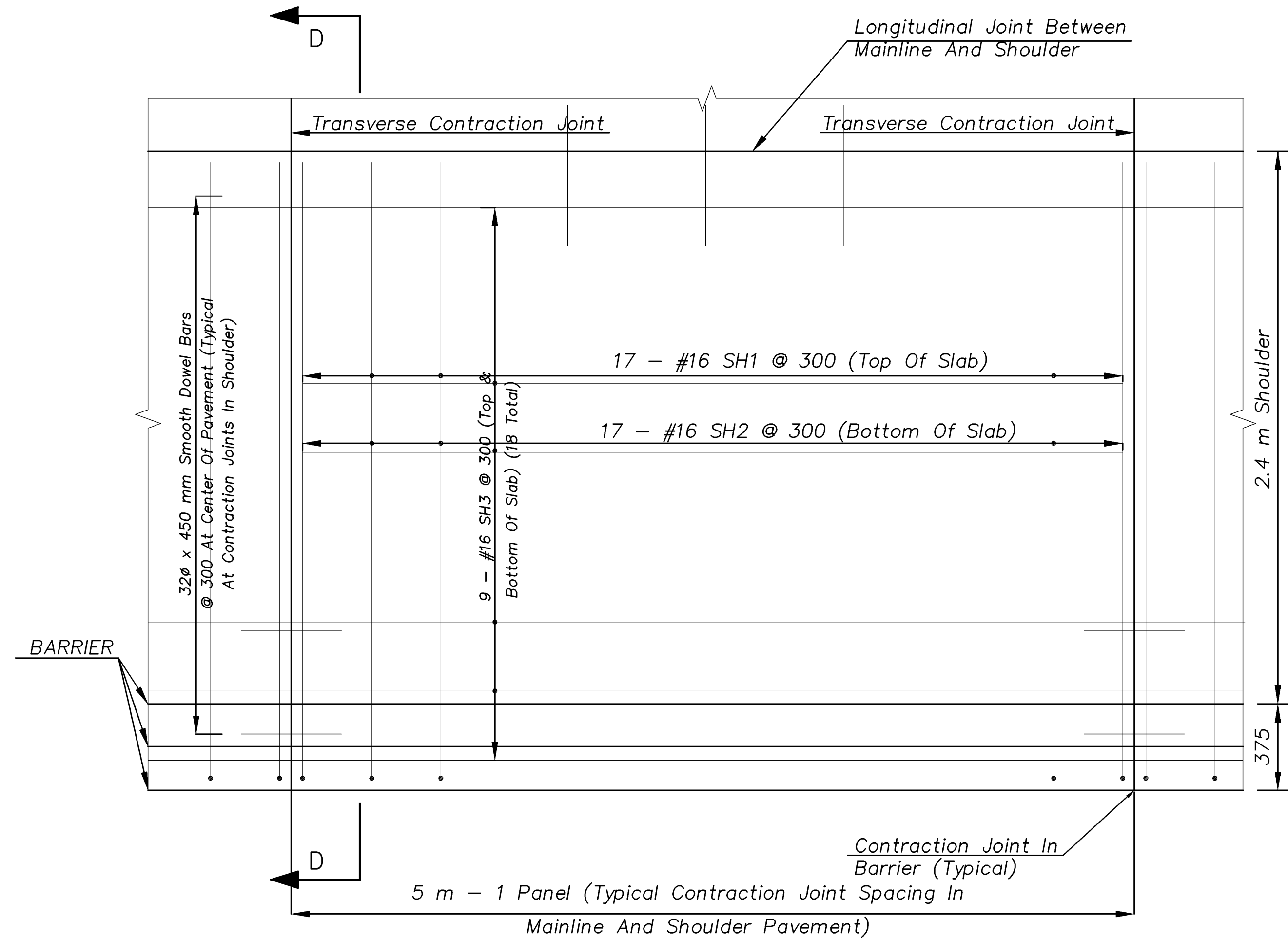
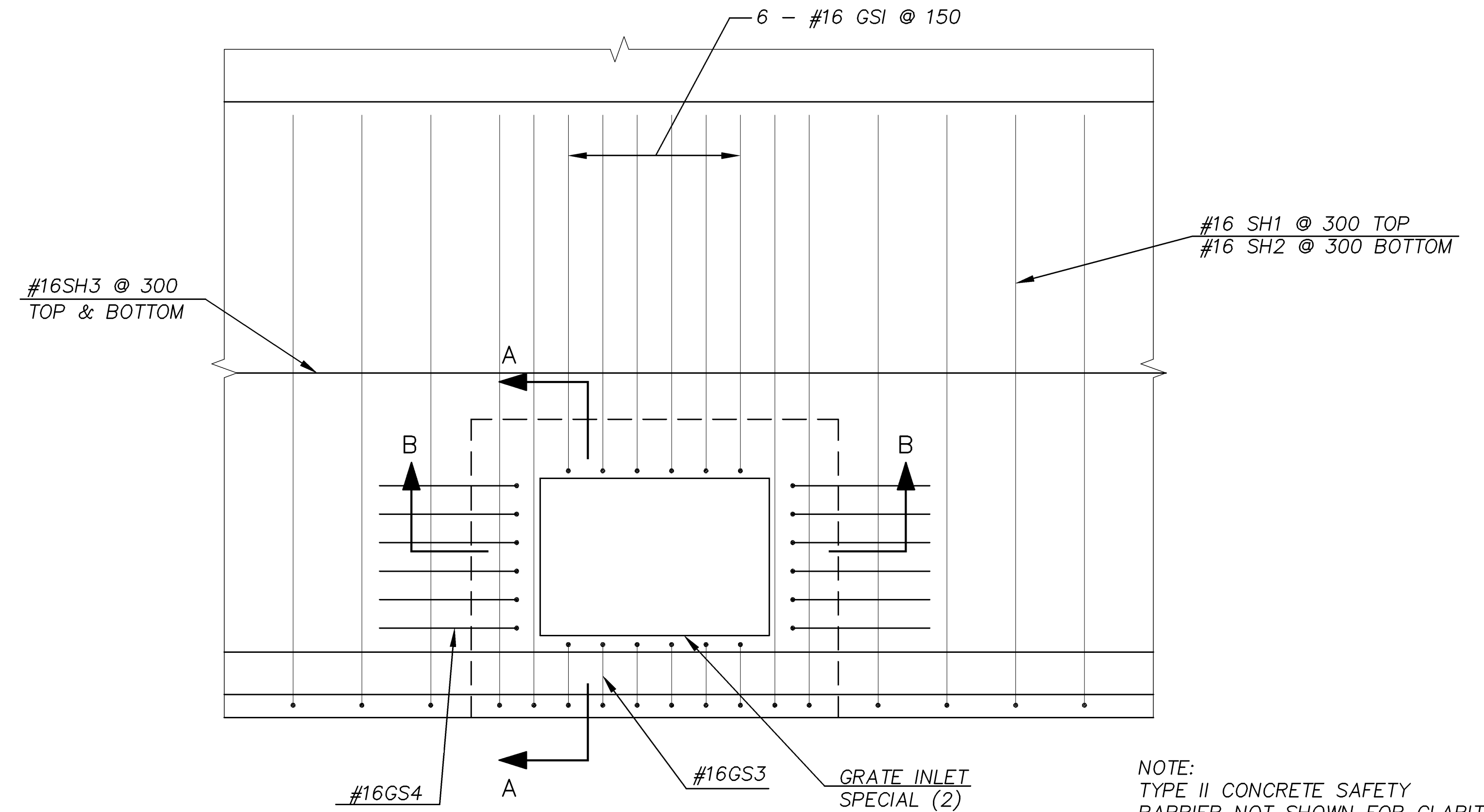


* CONCRETE, REINFORCEMENT AND OTHER MISCELLANEOUS ITEMS.

STATE	PROJECT NO.	YEAR	SHEET NO.	TOTAL SHEETS
KANSAS	54-87 K-8259-08	2005	38	223

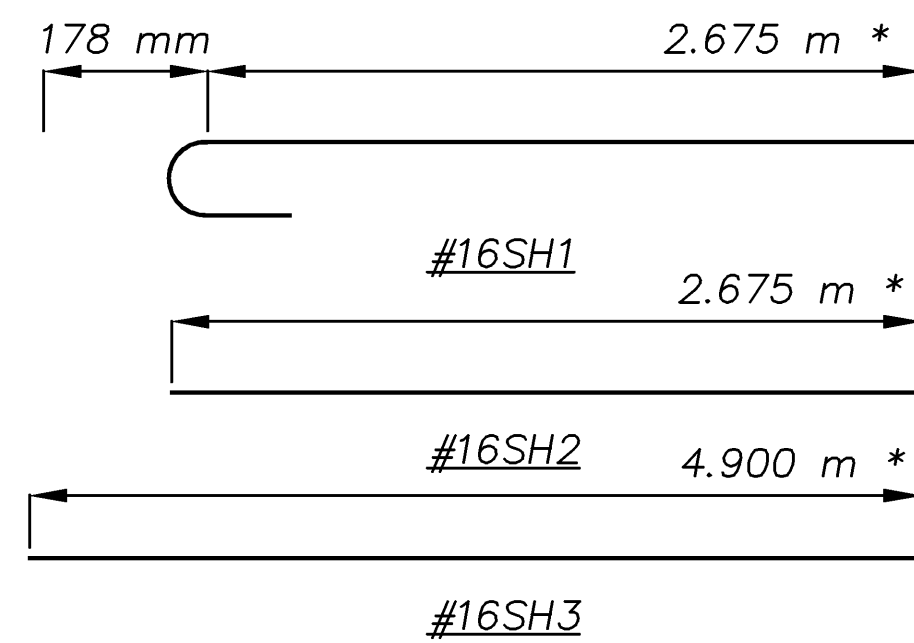


PLAN - SHOULDER PAVEMENT AT MSE WALL



PLAN @ GRATE INLET SPECIAL (2)

NOTE:
TYPE II CONCRETE SAFETY BARRIER NOT SHOWN FOR CLARITY.



BAR SCHEDULE - 1 PANEL
TYPICAL 5 m CONTRACTION JT. SP.

BAR MARK	SIZE	NO.	LENGTH m	WEIGHT kg
SH1	#16	17	2.853	75.3
SH2	#16	17	2.675	70.6
SH3	#16	18	4.900	136.9
TOTAL WEIGHT PER PANEL = 283 kg				

BILL OF REINFORCING STEEL - SHOULDER PAVEMENT

GENERAL NOTES:

USE EITHER GRADE 31 CONCRETE (AE) OR THE MIX USED IN THE CONCRETE PAVEMENT FOR THE SHOULDER AND GRATE INLET SPECIAL (2).
REINFORCING STEEL SHALL BE DEFORMED REINFORCING BARS IN COMPLIANCE WITH THE REQUIREMENTS OF ASTM A615m, GRADE 420. ALL REINFORCING SHALL BE EPOXY COATED IN ACCORDANCE WITH THE SPECIFICATIONS. ALL BAR SUPPORTS SHALL BE EPOXY COATED.
LOWER SECTION OF GRATE INLET SPECIAL (2) MAY BE PRECAST OR CAST IN PLACE.
CONTRACTOR SHALL SUBMIT REINFORCEMENT SHOP DRAWINGS FOR GRATE INLET SPECIAL 2 FOR REVIEW.

PAYMENT:

REINFORCING STEEL FOR FULL 5 m PANELS OR PARTIAL PANELS WILL BE PAID AS A FULL PANEL WITH 283 kg OF REINFORCING EPOXY COATED.
DOWEL BARS IN LONGITUDINAL JOINTS AND CONTRACTION JOINTS ARE INCIDENTAL.
CONCRETE IN SHOULDERS WILL BE PAID AS CONCRETE PAVEMENT PER SQUARE METER. GRATE INLET SPECIAL (2) WILL BE PAID PER EACH WHICH INCLUDES GRATE, FRAME, CONCRETE, REINFORCEMENT AND OTHER MISCELLANEOUS ITEMS.

* LENGTH IS FOR A NORMAL CONTRACTION JOINT SPACING OF 5 m. WHERE CONTRACTION JOINT SPACING IS LESS THAN 5 m, EXCESS LENGTH OF BAR MAY BE CUT OFF. TOUCH UP EPOXY COATING IN ACCORDANCE WITH THE SPECIFICATIONS.

KANSAS DEPARTMENT OF TRANSPORTATION

SHOULDER PAVEMENT AND
GRATE INLET SPECIAL (2)
REINFORCEMENT DETAILS - ONE

CFS Cook, Flatt & Strobel
ENGINEERS, P.A.

DATE	BY	REFERENCE NOTED	REFERENCE CHECKED

SCALE

Drawn by: Plotted: File: