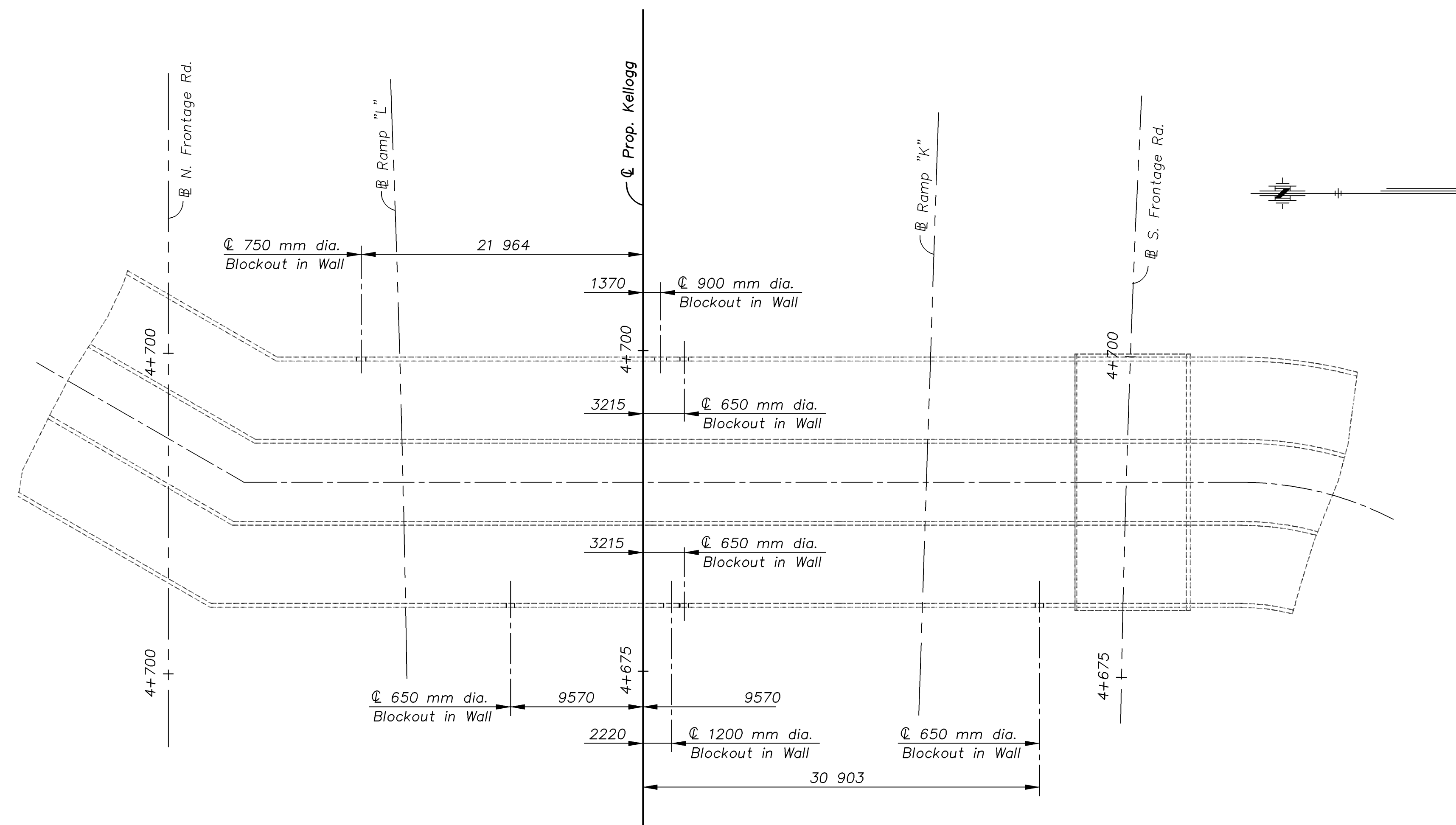


E.F. INDICATES EACH FACE.
 N.F. INDICATES NEAR FACE.
 F.F. INDICATES FAR FACE.

STATE	PROJECT NO.	YEAR	SHEET NO.	TOTAL SHEETS
KANSAS	54-87 K-8258-08	2005	78	223



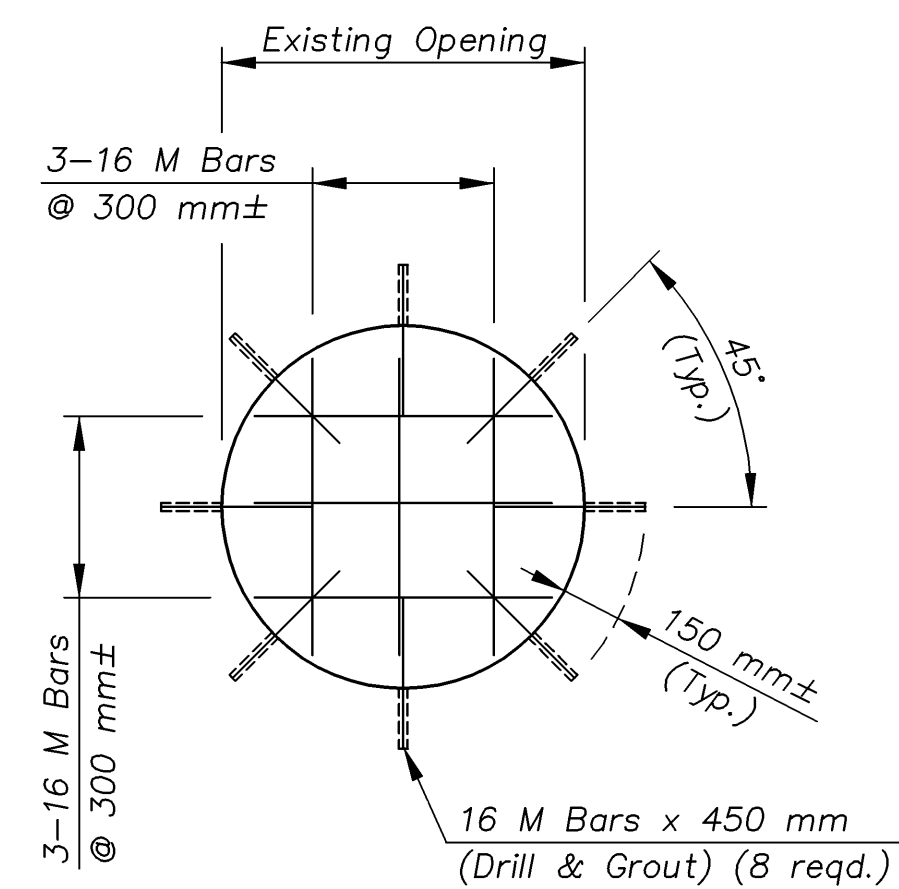
PLAN SHOWING EXISTING BLOCKOUTS TO BE FILLED IN TRIPLE 6.1 x 3.7 m R.C.B.

NOTE: The Contractor shall remove the existing storm sewer pipe and all grout material back to the limits of the existing blockout opening at each location shown on the plans. Drill and grout 16 M bars into the existing R.C.B. wall at each opening according to the KDOT Standard Specifications.

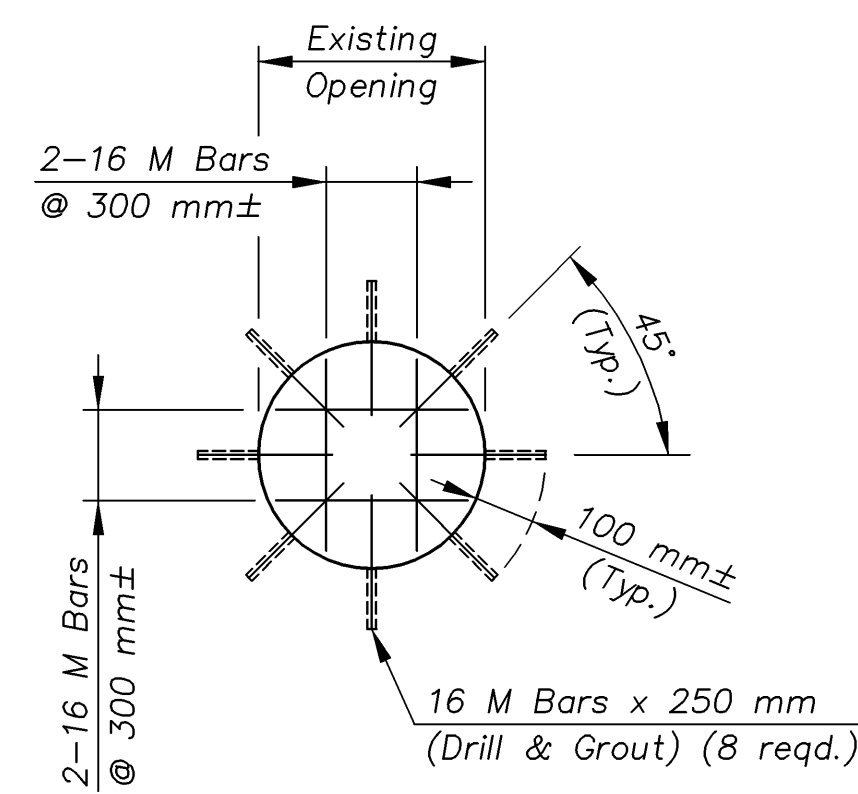
All existing concrete surfaces adjacent to the new concrete shall be thoroughly cleaned by brushing, and soaked with water immediately prior to placing the new concrete.

All concrete shall be Concrete (Grade 31) AE. All reinforcing steel shall conform to ASTM A615M, Grade 420.

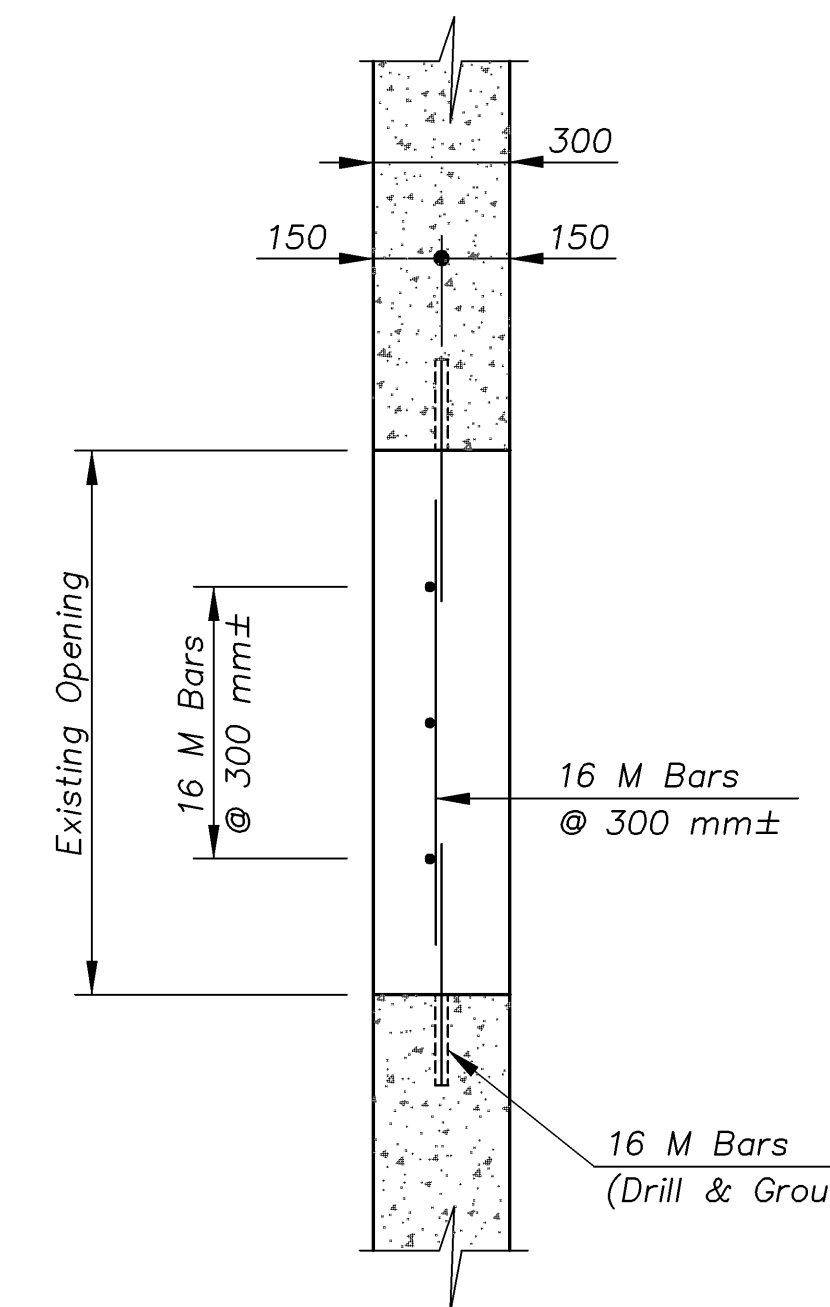
All work and material necessary for the removal of storm sewer pipes and filling of the existing blockouts in the R.C.B. walls shall not be paid for directly, but shall be Subsidiary to other items of the Contract.



ELEVATION VIEW OF 900 & 1200 mm BLOCKOUT




ELEVATION VIEW OF 650 & 750 mm BLOCKOUT



SECTION THRU WALL

GYPSUM\MISCELLANEOUS 1:100

KANSAS DEPARTMENT OF TRANSPORTATION		 Cook, Flatt & Strobel ENGINEERS, P. A.	
BR. NO. 54-87-31.63(706)	STA. 4+689.738		
R.C. BOX BRIDGE BLOCKOUT DETAILS		DESIGNED R.S.C.	SCALE Varies
KELLOGG AVENUE OVER GYPSUM CREEK		DETAILED T.R.G.	DATE
Proj. No. 54-87 K-8258-08	SEDGWICK COUNTY	QUANTITIES T.R.G.	SHEET 1 OF 1