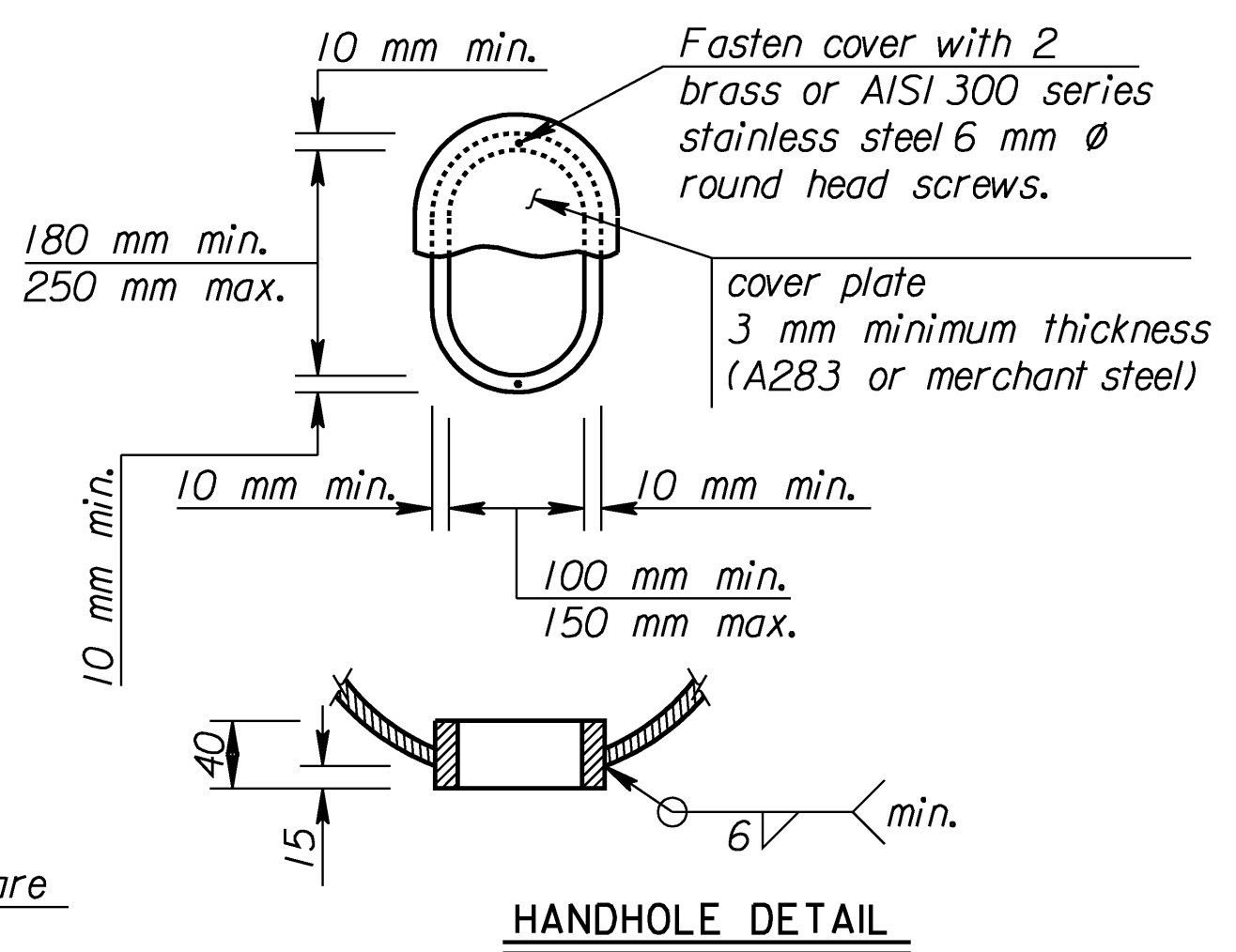
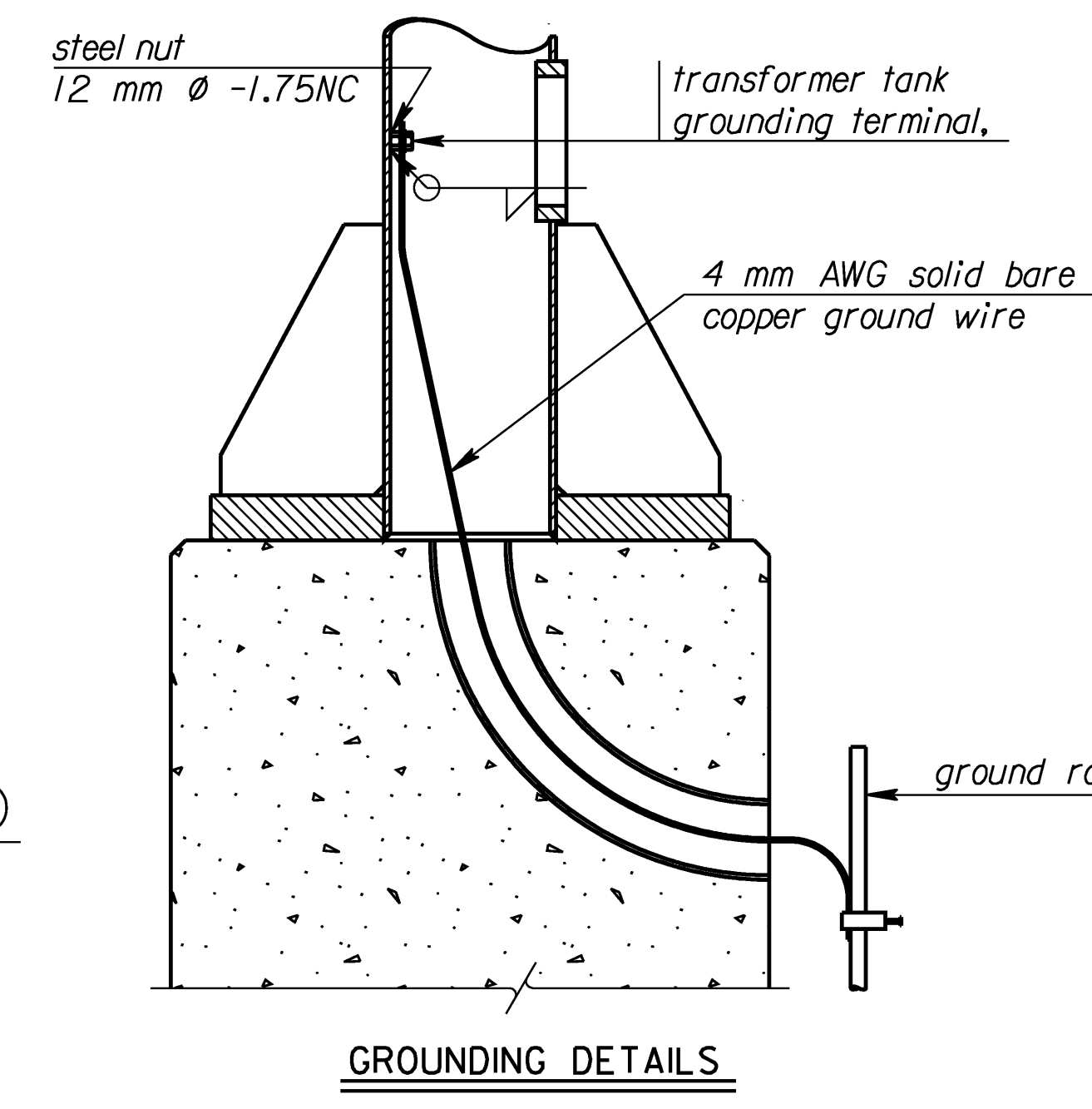
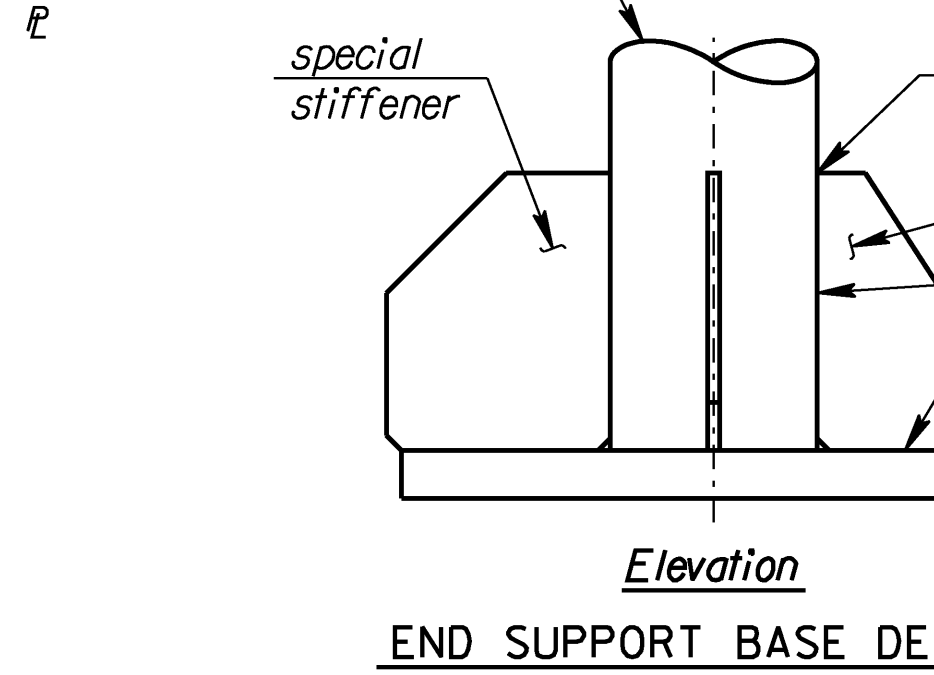
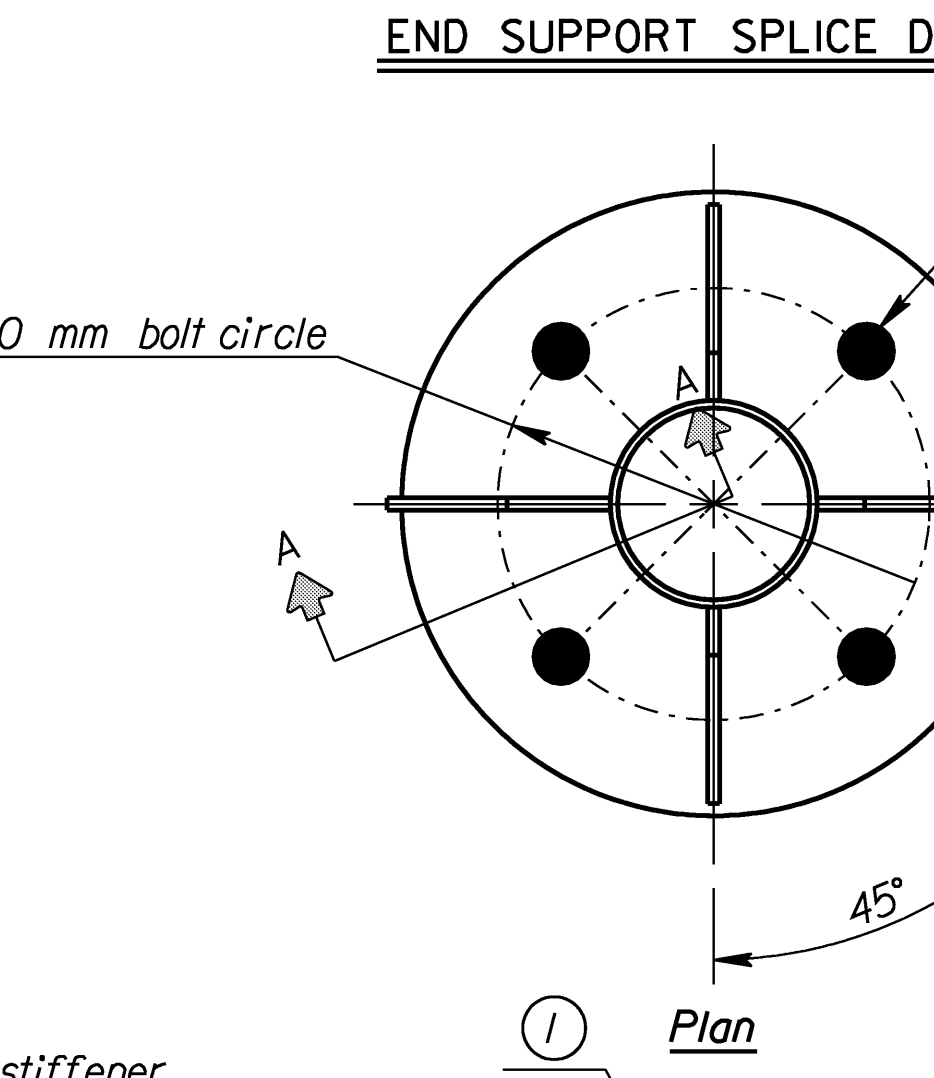
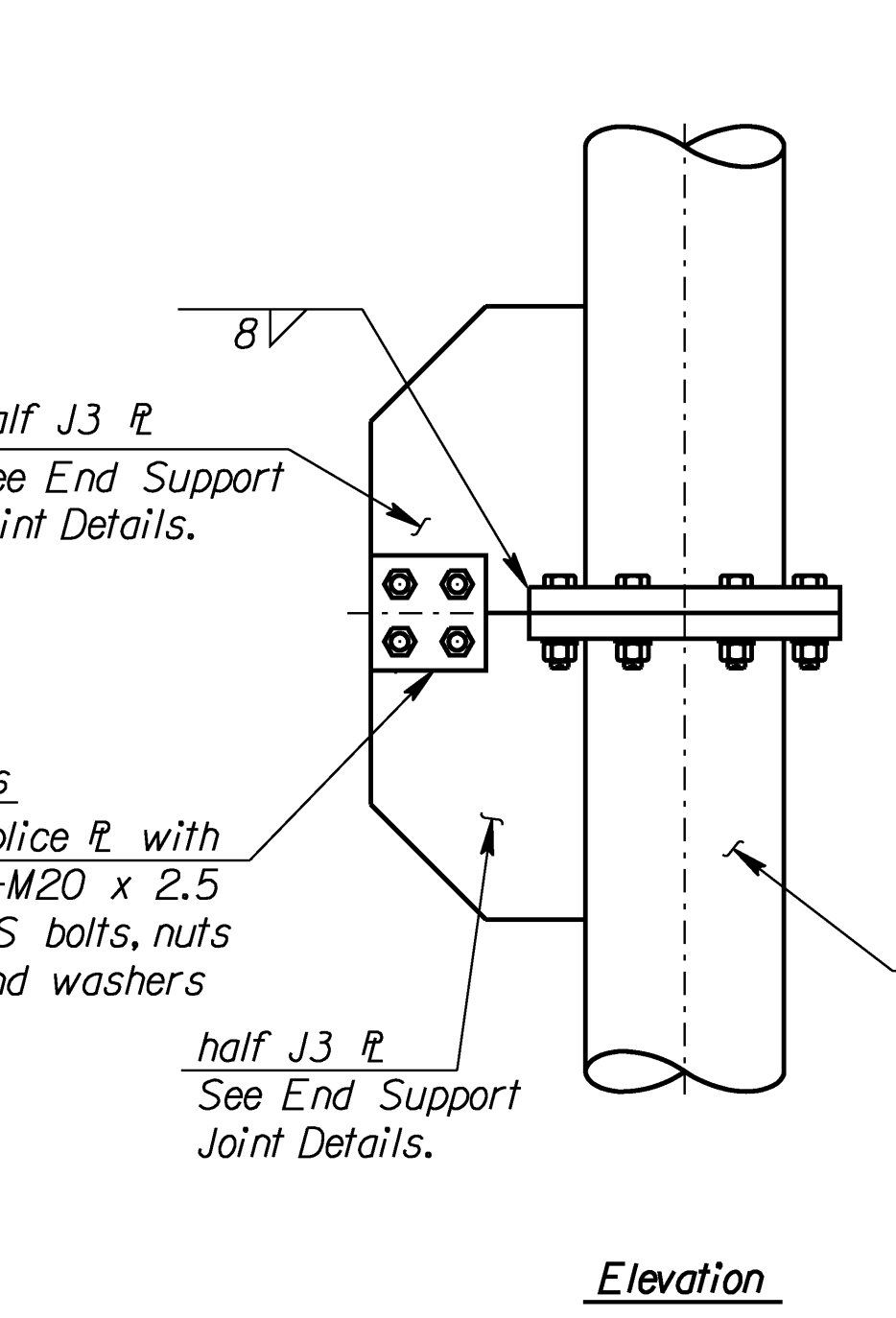
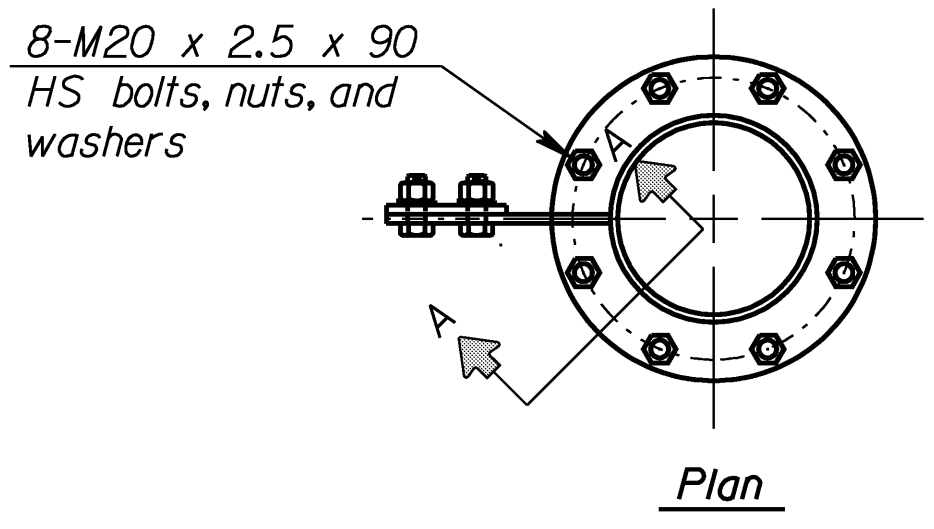
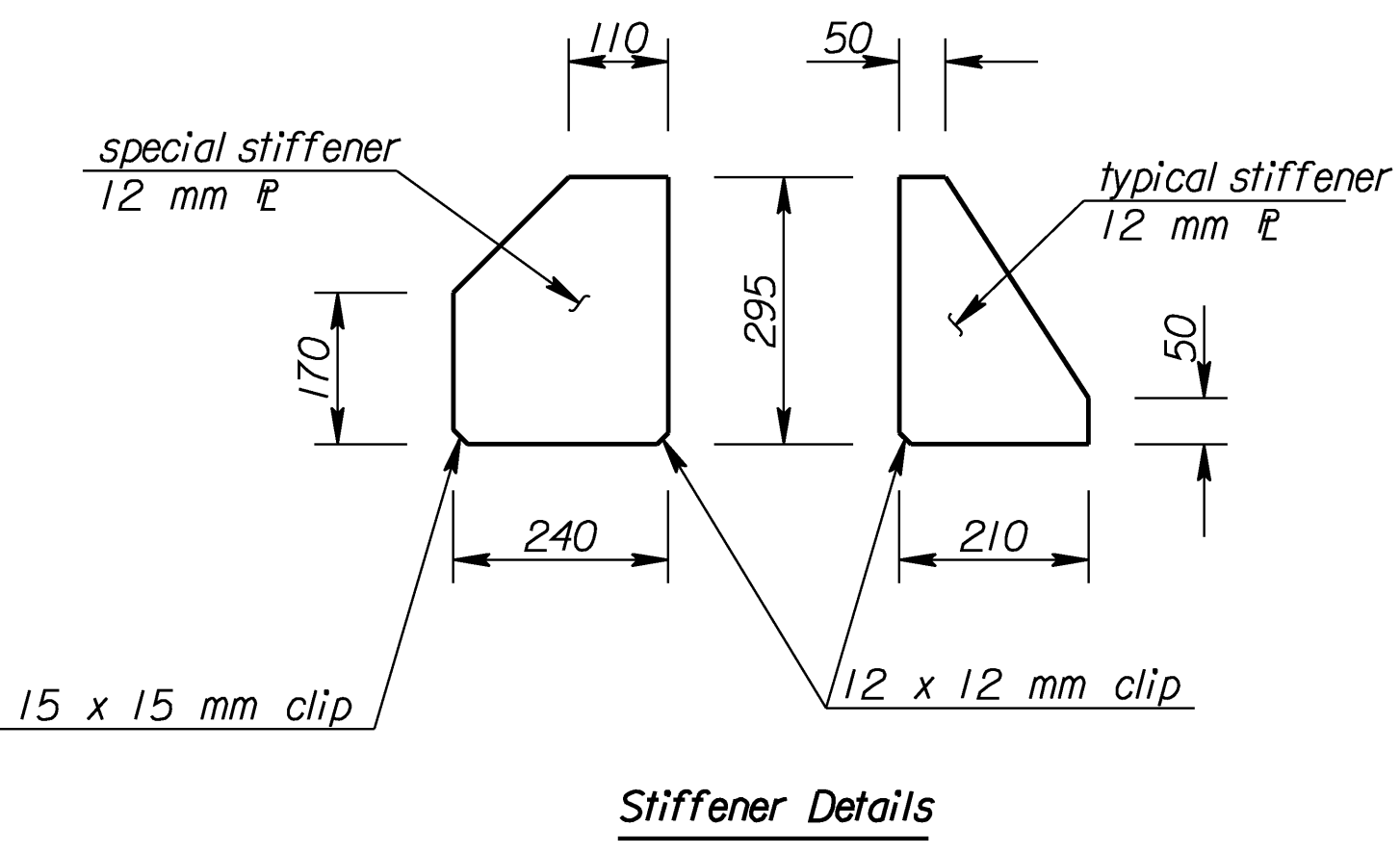
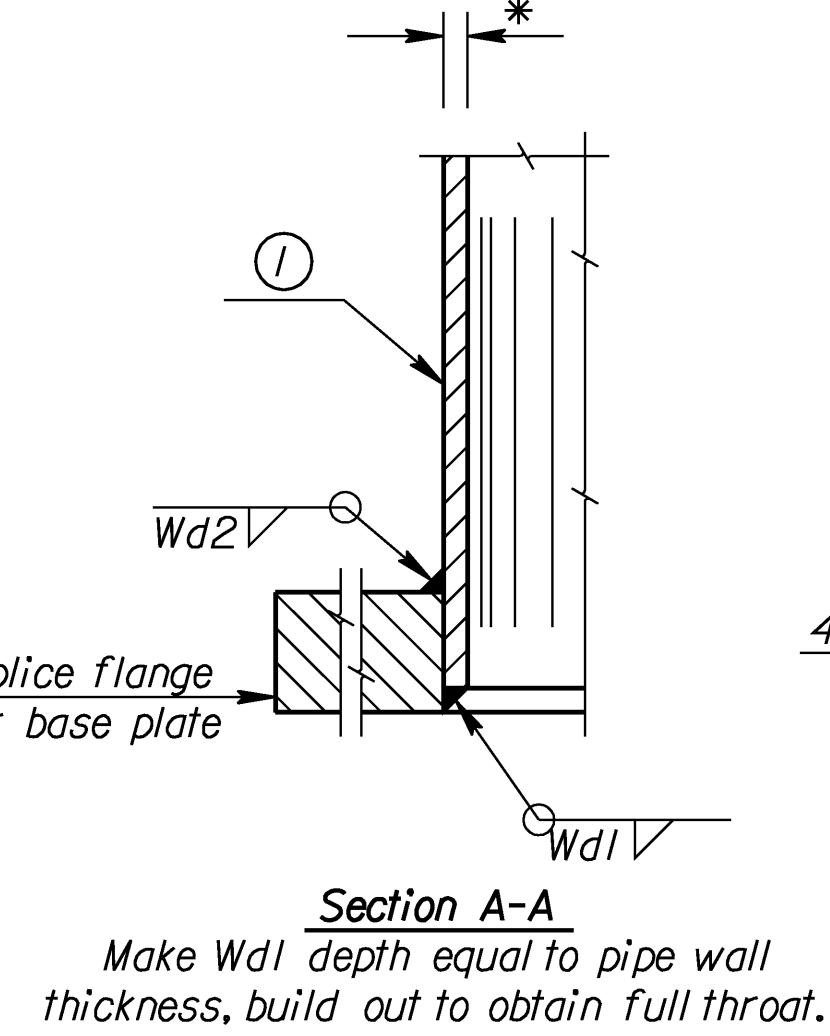
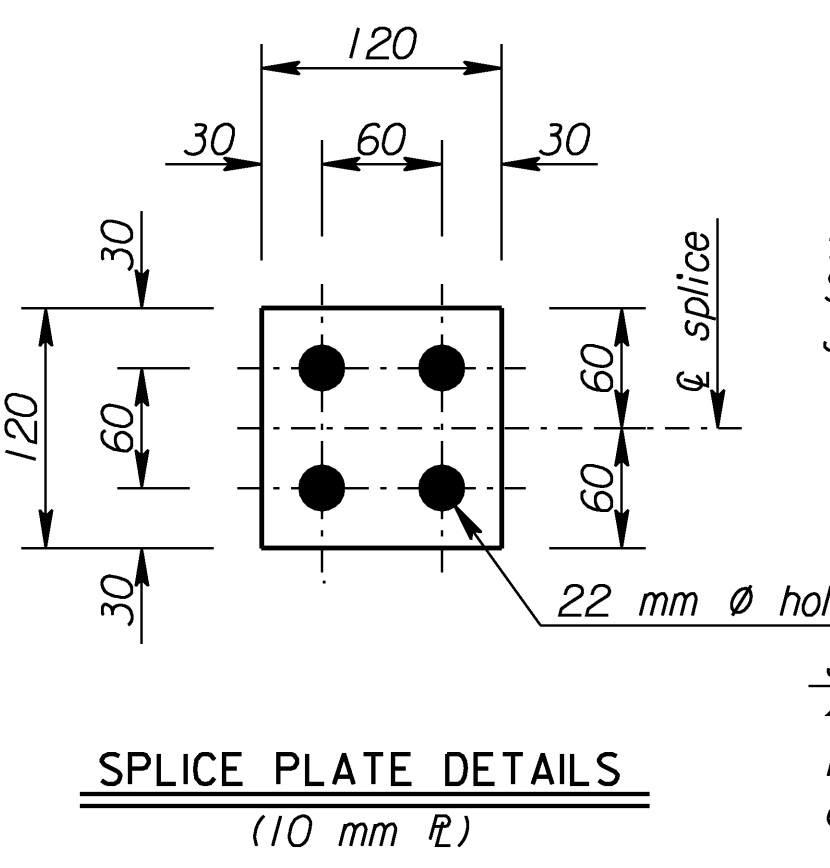
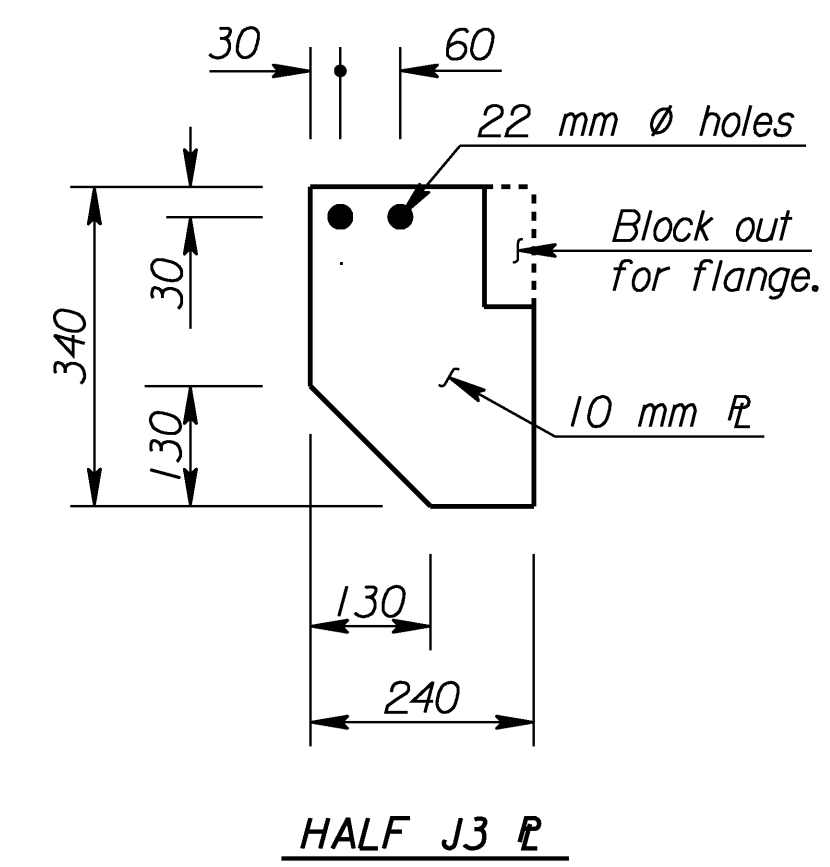
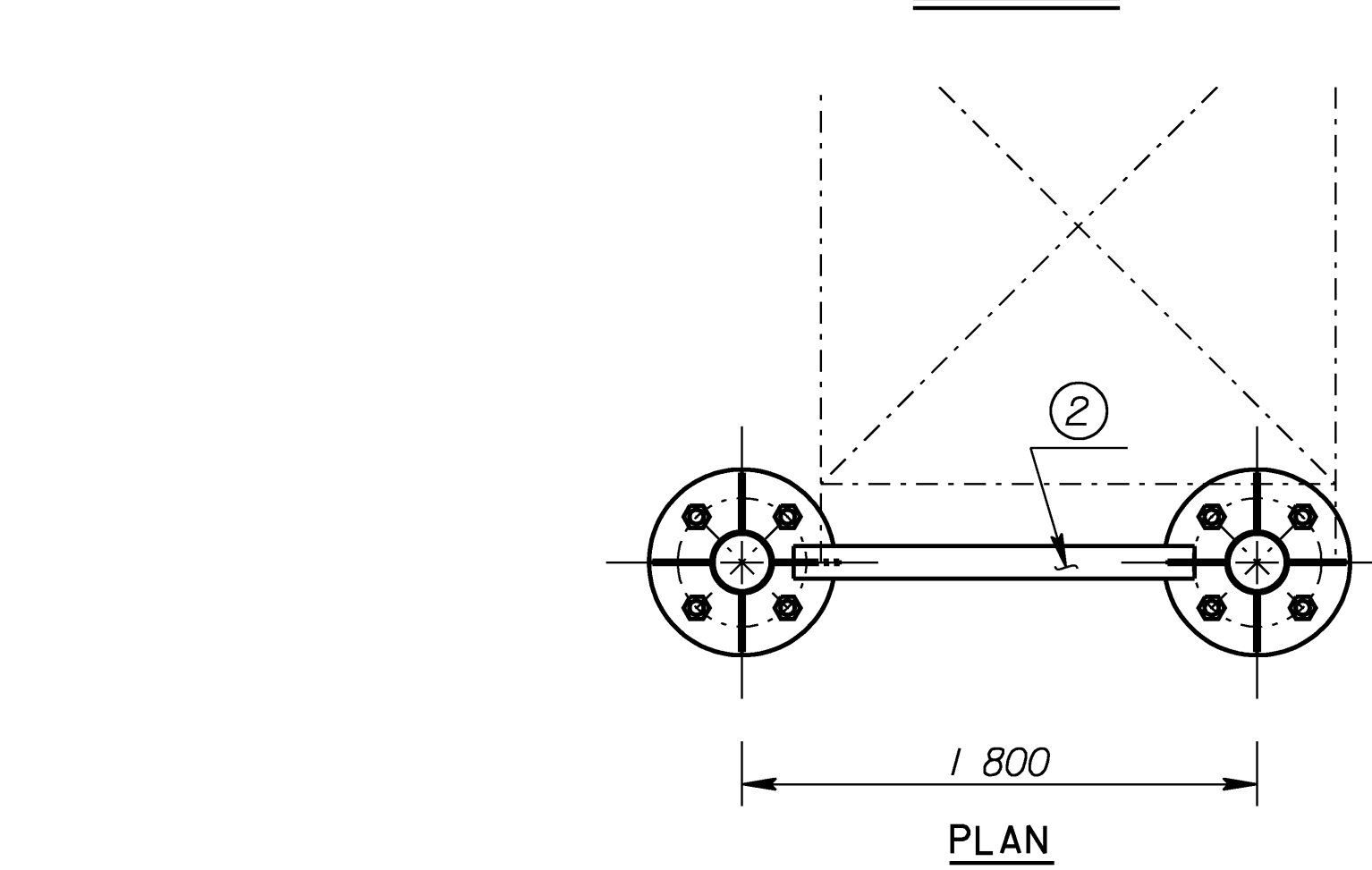
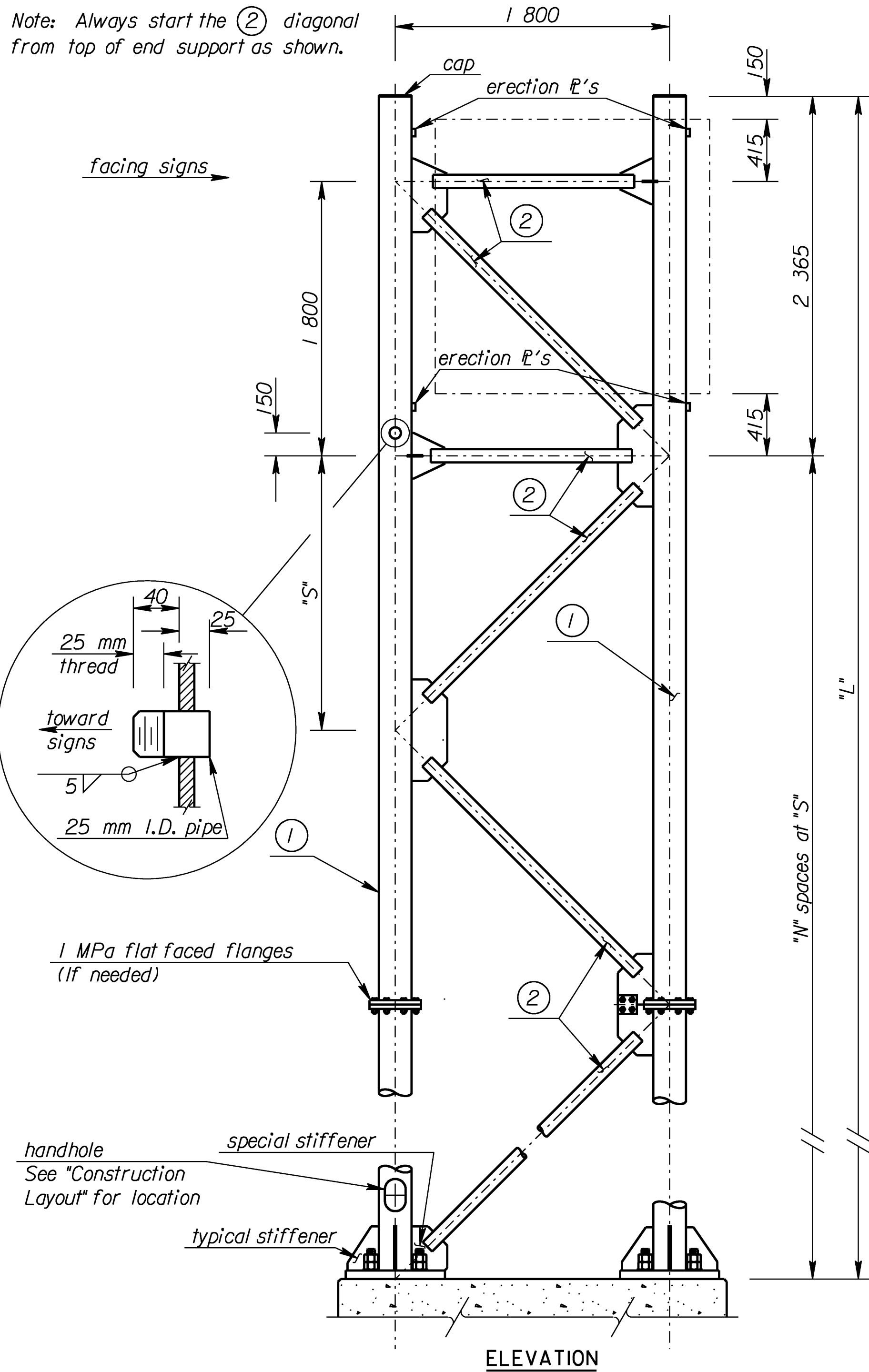


STATE	PROJECT NO.	YEAR	SHEET NO.	TOTAL SHEETS
KANSAS	54-87 K-8258-01	2005	186	223

Note: Always start the ② diagonal from top of end support as shown.

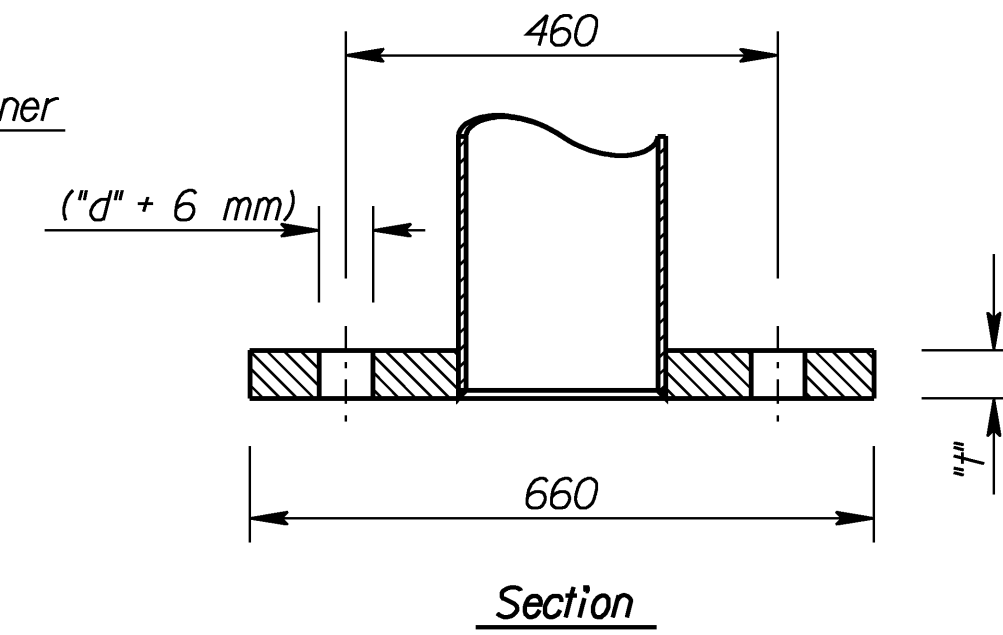


Note: Use a handhole frame bar whose net area is at least 60 percent of the pole section removed. Maintain the pole section properties at the handhole.

Member ① is 219 mm O.D. pipe  
Member ② is 89 mm O.D. pipe

Member ①*	Fillet Weld Size Wd2	Anchor Bolt "d"	Base flange "t"
4.78	5	36	45
6.35	6	42	50
7.92	8	48	60
10.3	10	56	70
12.7		64	80
15.1			

\* See "Construction Layout" for wall thickness, "N", "S", and "L".



Std. Base File: sl15csi.dgn - Plot 1  
 Plotted By: bond  
 File: F:\Working\825801\SL Structures\SL-825801-15.csi.dgn  
 Plot Date: 6/29/2005

NO.	DATE	REVISIONS	BY	APP'D		
<b>KANSAS DEPARTMENT OF TRANSPORTATION</b> <b>STANDARD STRUCTURAL SIGN SUPPORTS</b> <b>SPAN TYPE OVERHEAD</b> <b>STEEL ALTERNATE</b> <b>END SUPPORT FRAMING PLAN AND SPLICE DETAILS</b> <b>SL15C-01S1</b>						
FHWA APPROVAL		4-10-97	APP'D	Kenneth F. Hurst		
DESIGNED	BFM	DETAILED	KFH	QUANTITIES	CADD	DJE
DESIGN CK.	RDH	DETAIL CK.	RDH	QUAN. CK.	CADD CK.	LES