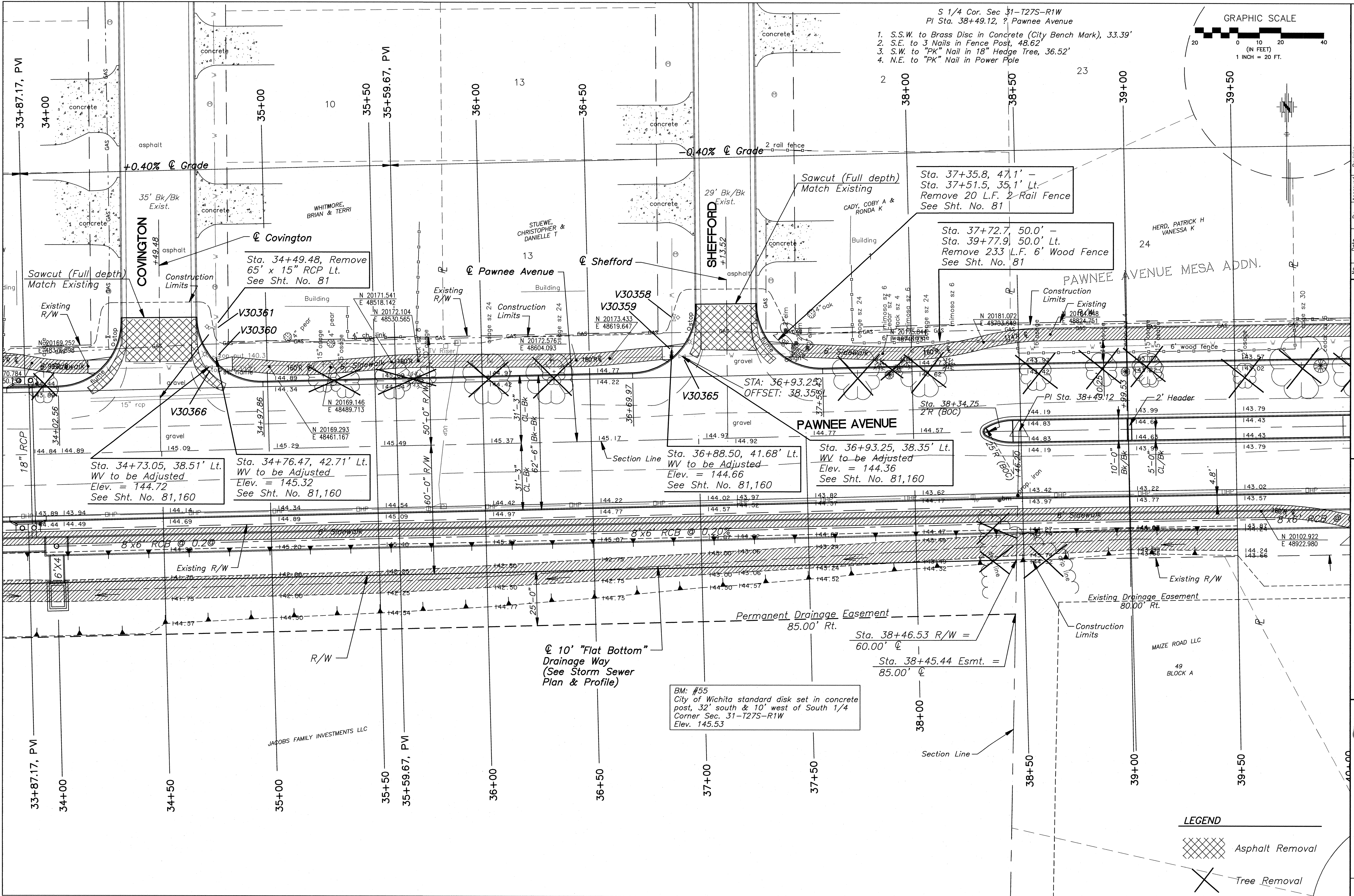
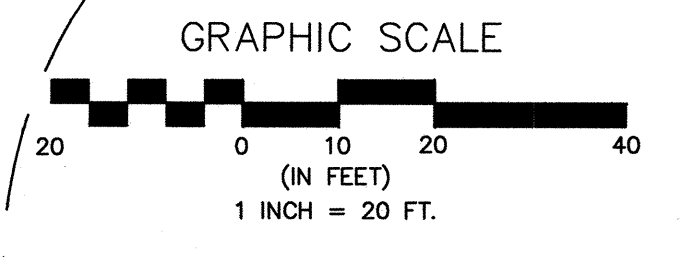


S 1/4 Cor. Sec 31-T27S-R1W
 PI Sta. 38+49.12, ? Pawnee Avenue
 1. S.S.W. to Brass Disc in Concrete (City Bench Mark), 33.39'
 2. S.E. to 3 Nails in Fence Post, 48.62'
 3. S.W. to "PK" Nail in 18" Hedge Tree, 36.52'
 4. N.E. to "PK" Nail in Power Pole



Sta. 34+73.05, 38.51' Lt.
 WV to be Adjusted
 Elev. = 144.72
 See Sht. No. 81,160

Sta. 34+76.47, 42.71' Lt.
 WV to be Adjusted
 Elev. = 145.32
 See Sht. No. 81,160

Sta. 36+88.50, 41.68' Lt.
 WV to be Adjusted
 Elev. = 144.66
 See Sht. No. 81,160

Sta. 36+93.25, 38.35' Lt.
 WV to be Adjusted
 Elev. = 144.36
 See Sht. No. 81,160

Sta. 38+46.53 R/W =
 60.00' ϕ
 Sta. 38+45.44 Esmt. =
 85.00' ϕ

BM: #55
 City of Wichita standard disk set in concrete
 post, 32' south & 10' west of South 1/4
 Corner Sec. 31-T27S-R1W
 Elev. 145.53

- LEGEND**
- Asphalt Removal
 - Tree Removal

PAWNEE AVENUE
 119TH TO MAIZE ROAD
 CITY OF WICHITA, KANSAS
 PAVEMENT PLAN

POE & ASSOCIATES, INC.
 CONSULTING ENGINEERS
 5940 E. Central, Suite 200 • Wichita, KS 67208-4242
 Phone 316/685-4114 • FAX 316/685-4444

FINA
 Engineer: P. FERGUSON
 Designer: J. UNRUH
 P.O. Job No.: 1793
 Date: JULY 2005

Sheet
 9 of 162