

W 1/4 Cor. Sec 32-T27S-R1W
Found 3/4" IP in thimble @ corner

1. W. to PK nail in E. face Hedge tree, 32.8'
2. E.N.E. to 3 nails in W. face Power Pole, 50.57'
3. S.E. to "+" cut on N. end Headwall RCB, 59.65'
4. S.W. to "+" Cut on N. end Headwall RCB, 59.60'

SW Cor. Sec 32-T27S-R1W
PI Sta. 64+88.65, ? Pawnee Avenue

1. N.E. to 3 nails in N. fc. PP, 58.40'
2. S.E. to 3 Nails in N.E. Face Power Pole, 59.09'
3. S.W. to Center C.O.W. BM disk, 65.5'

Sta. 65+30.45, 43.15' Lt.
WV to be Adjusted
Elev. = 136.00
See Sht. No. 81,160

Sta. 65+27.02, 42.31' Lt.
WV to be Adjusted
Elev. = 136.10
See Sht. No. 81,160

Sta. 65+30.75, 73.98' Lt.
Relocate FH
Remove 5.0'
Fire Hydrant Assembly (W)
Bury Line Elev. = 137.25
See Sht. No. 81,160

BM: #67
" " Cut on top curb, north side Yosemite
65' east of Maize Road, opposite
Fire Hydrant.
Elev. 143.73

Sta. 64+88.65, Maize Road
Sta. 50+00.00, Maize Road

STA. 64+20.70, END PROJECT
PROJECT NO. 87 N-0353-01

Maize Road

Sta. 61+98.69 Esmt. =
Exist. R/W 65.00' Maize Road

Construction Limits

Maize Road

Existing R/W

Maize Road

Maize Road

Maize Road

Maize Road

Maize Road

Maize Road

Maize Road

Maize Road

Maize Road

Maize Road

Maize Road

Maize Road

Maize Road

Maize Road

Maize Road

Maize Road

Maize Road

Maize Road

Maize Road

Maize Road

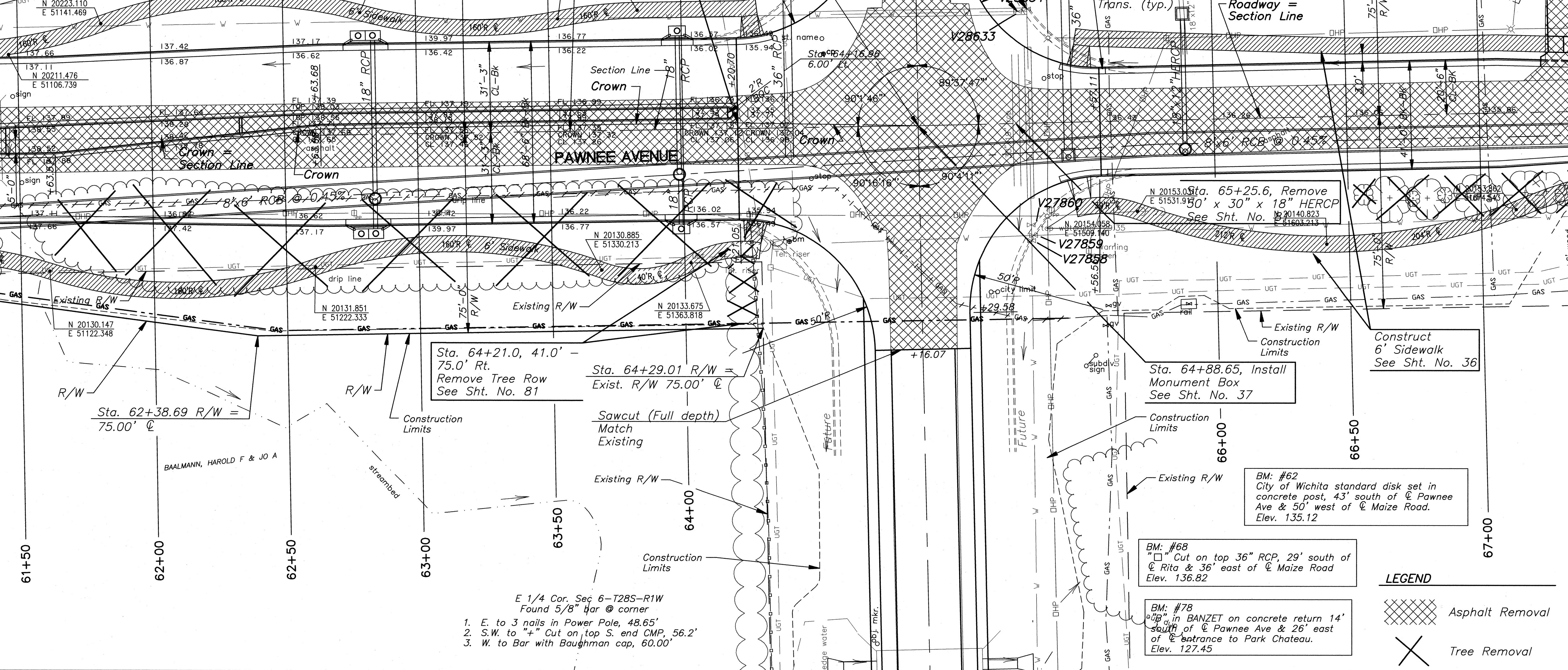
Maize Road

Maize Road

Maize Road

Maize Road

Maize Road



Sta. 64+21.0, 41.0' -
75.0' Rt.
Remove Tree Row
See Sht. No. 81

Sta. 64+29.01 R/W =
Exist. R/W 75.00' Maize Road

Sta. 62+38.69 R/W =
75.00' Maize Road

Sta. 65+25.6, Remove
50' x 30' x 18" HERCP
See Sht. No. 81,160

Sta. 64+88.65, Install
Monument Box
See Sht. No. 37

Construct
6' Sidewalk
See Sht. No. 36

BM: #62
City of Wichita standard disk set in
concrete post, 43' south of Maize
Ave & 50' west of Maize Road.
Elev. 135.12

BM: #68
" " Cut on top 36" RCP, 29' south of
Maize Road & 36' east of Maize Road
Elev. 136.82

BM: #78
" " in BANZET on concrete return 14'
south of Maize Ave & 26' east
of Maize Road entrance to Park Chateau.
Elev. 127.45

E 1/4 Cor. Sec 6-T28S-R1W
Found 5/8" Bar @ corner

1. E. to 3 nails in Power Pole, 48.65'
2. S.W. to "+" Cut on top S. end CMP, 56.2'
3. W. to Bar with Baughman cap, 60.00'

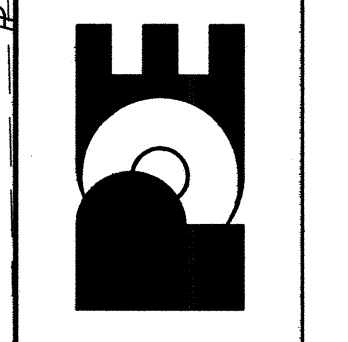
LEGEND

Asphalt Removal

Tree Removal

PAWNEE AVENUE
119TH TO MAIZE ROAD
CITY OF WICHITA, KANSAS
PAVEMENT PLAN

POE & ASSOCIATES, INC.
CONSULTING ENGINEERS
5940 E. Central, Suite 200 - Wichita, KS 67208-4242
Phone 316/685-4114 - FAX 316/685-4444



FINAL

Engineer: P. FERGUSON
Designer: J. UNRUH
Poe Job No.: 1793
Date: JULY 2005

Sheet
14 of 162