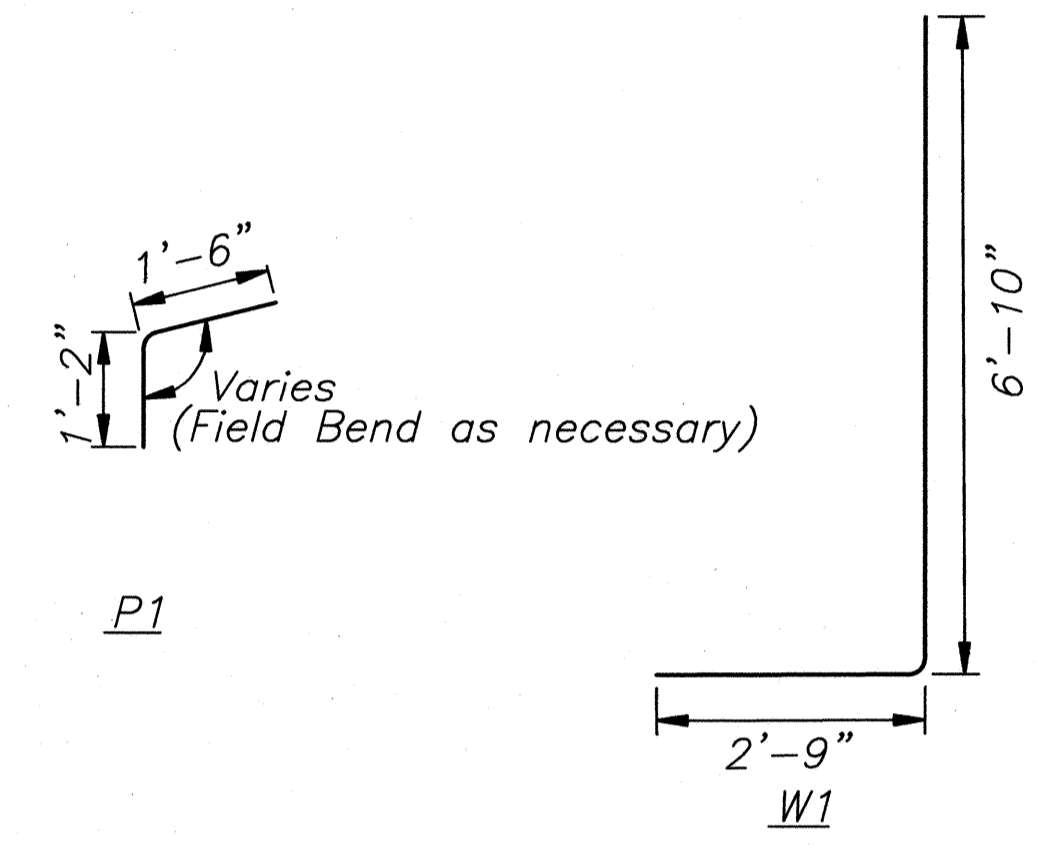
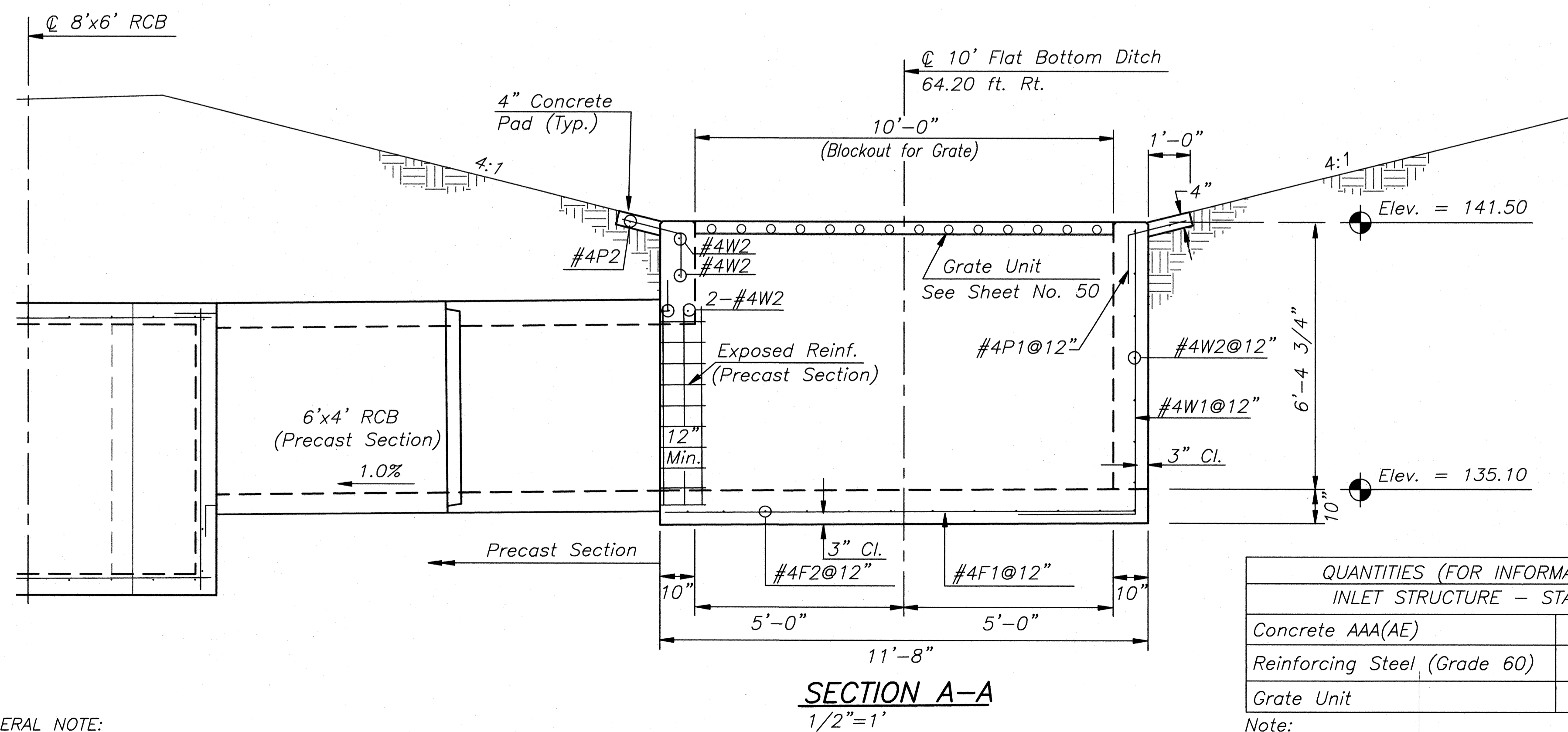


BILL OF REINFORCING STEEL
Non-Epoxy Coated - Grade 60

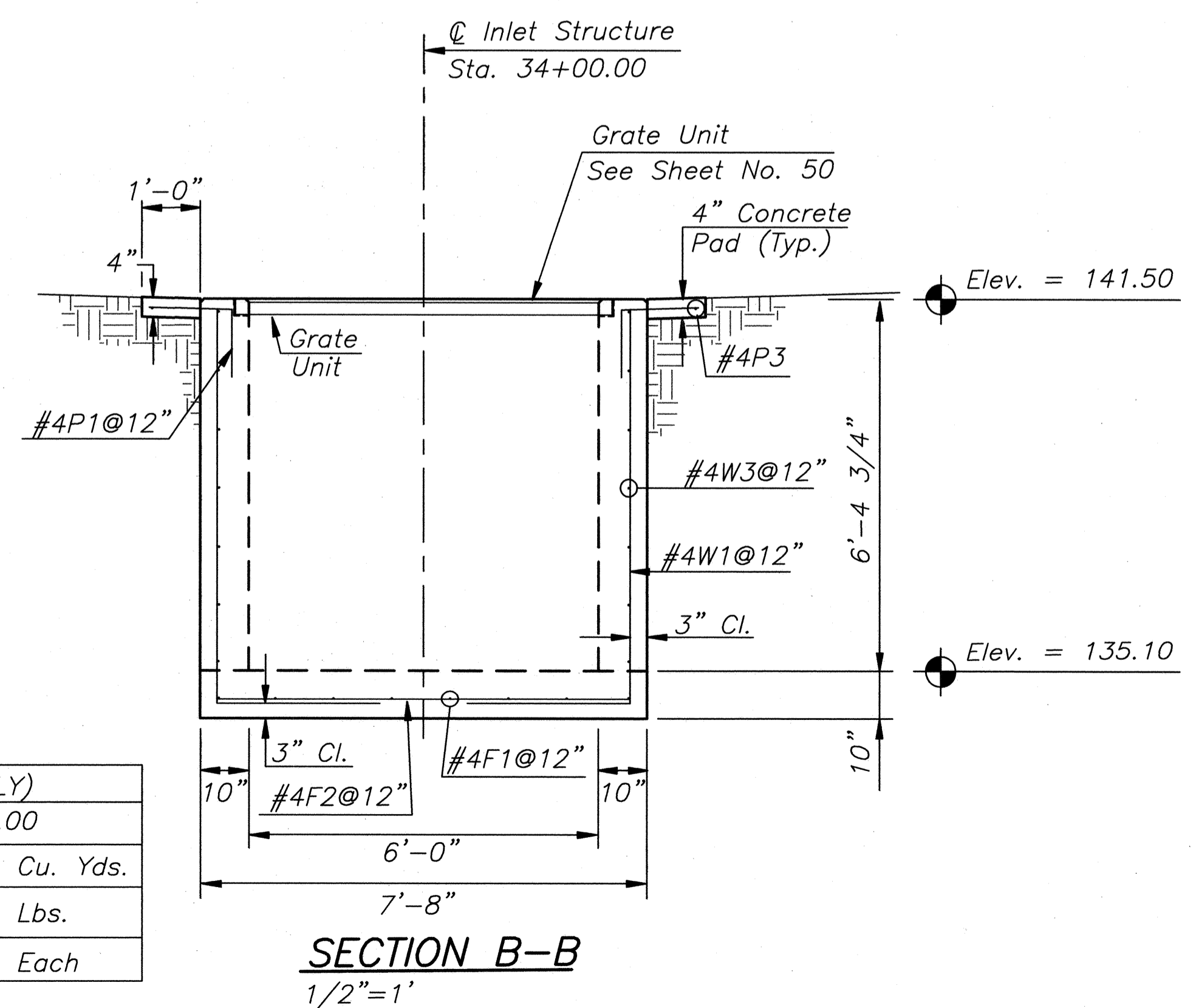
Straight Bars				Bent Bars			
Mark	Size	Number	Length	Mark	Size	Number	Length
F1	#4	8	11'-5"	P1	#4	40	2'-7"
F2	#4	12	7'-5"	W1	#4	32	9'-8"
W2	#4	11	7'-5"				
W3	#4	14	11'-5"				
P2	#4	2	9'-4"				
P3	#4	2	13'-4"				



Bending Diagrams
(All dimensions are out to out of bars.)



SECTION A-A
1/2"=1'



SECTION B-B
1/2"=1'

QUANTITIES (FOR INFORMATION ONLY)
INLET STRUCTURE - STA. 34+00.00

Concrete AAA(AE)	9.1	Cu. Yds.
Reinforcing Steel (Grade 60)	590	Lbs.
Grate Unit	1	Each

Note:
All labor, materials and equipment shall be subsidiary to the bid item "Reinforced Concrete Inlet Structure."

GENERAL NOTE:
Use Concrete Class AAA (AE) throughout or mix used in concrete pavement.
All exposed edges shall be bevelled with a 3/4" triangular molding.

Note:
See Sheet No. 50 For Grate Unit Details.

PANEE AVENUE
 119TH TO MAIZE ROAD
CITY OF WICHITA, KANSAS
 INLET STRUCTURE - STA. 34+00

POE & ASSOCIATES, INC.
 CONSULTING ENGINEERS
 5940 E. Central, Suite 200 • Wichita, KS 67208-4242
 Phone 316/685-4114 • FAX 316/685-4444

FINAL

Engineer: P. FERGUSON
 Designer: P. FERGUSON
 P.O. Job No.: 1793
 Date: JULY 2005

Sheet
 46 of 162