

Benchmark
 1. 1" Cut in South Side of Hardtner Cr., 40' East of end of Existing Pavement, or 10' East and 14.5' North of Northwest corner of Lot 18, Block A, Elev. = 145.85 (City Datum)
 2. 1" Cut in Top of Curb Adjacent to the Southeast Corner of Lot 1, Block A, Elev. = 147.34 (City Datum)

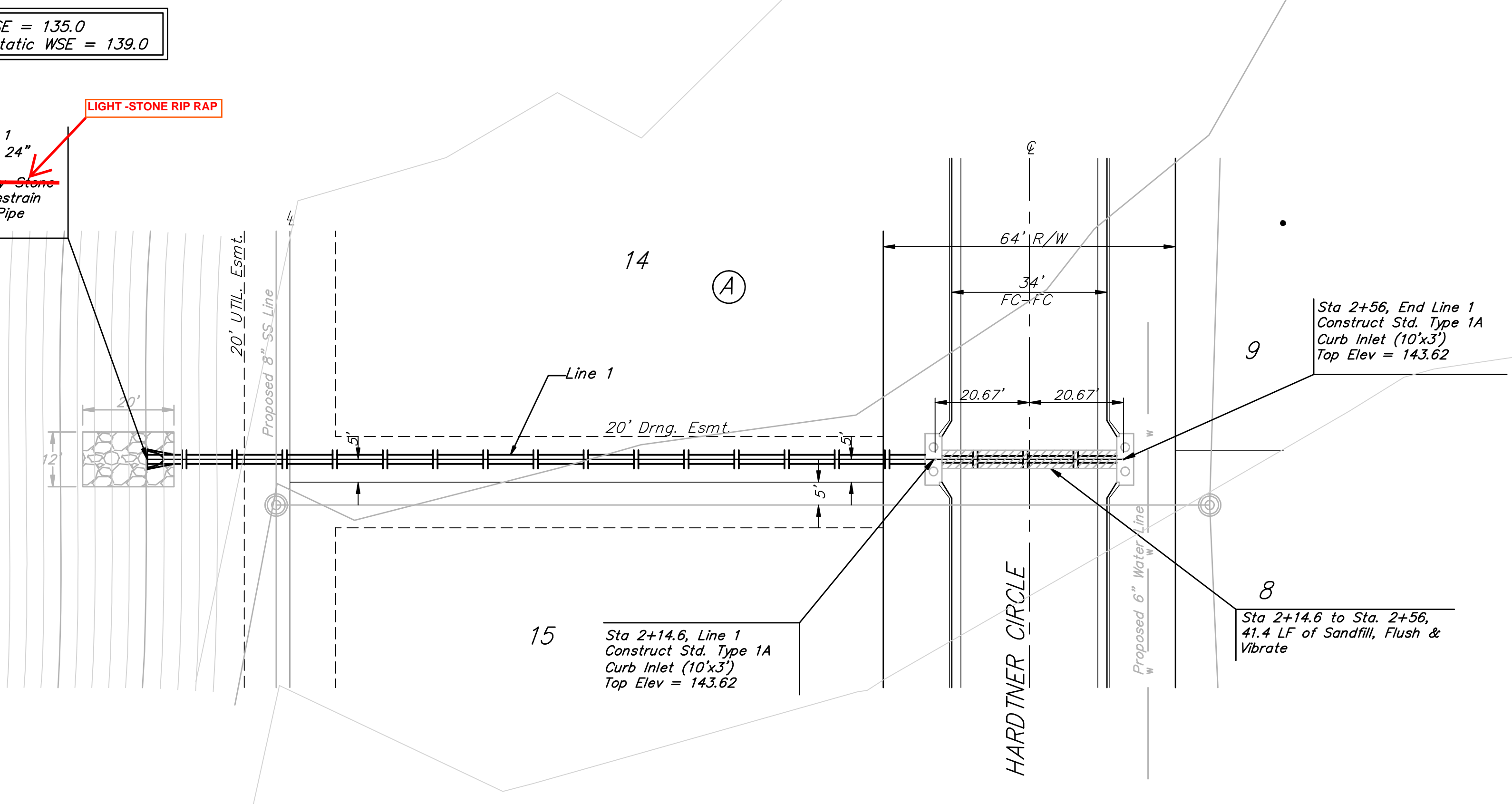
Static WSE = 135.0
 100-yr Static WSE = 139.0

Sta 0+42, Begin Line 1
 Begin Construction of 24" rcp with End Section Install 26.7 S.Y. Heavy Stone Rip Rap as Shown. Restrain End Section to First Pipe Joint

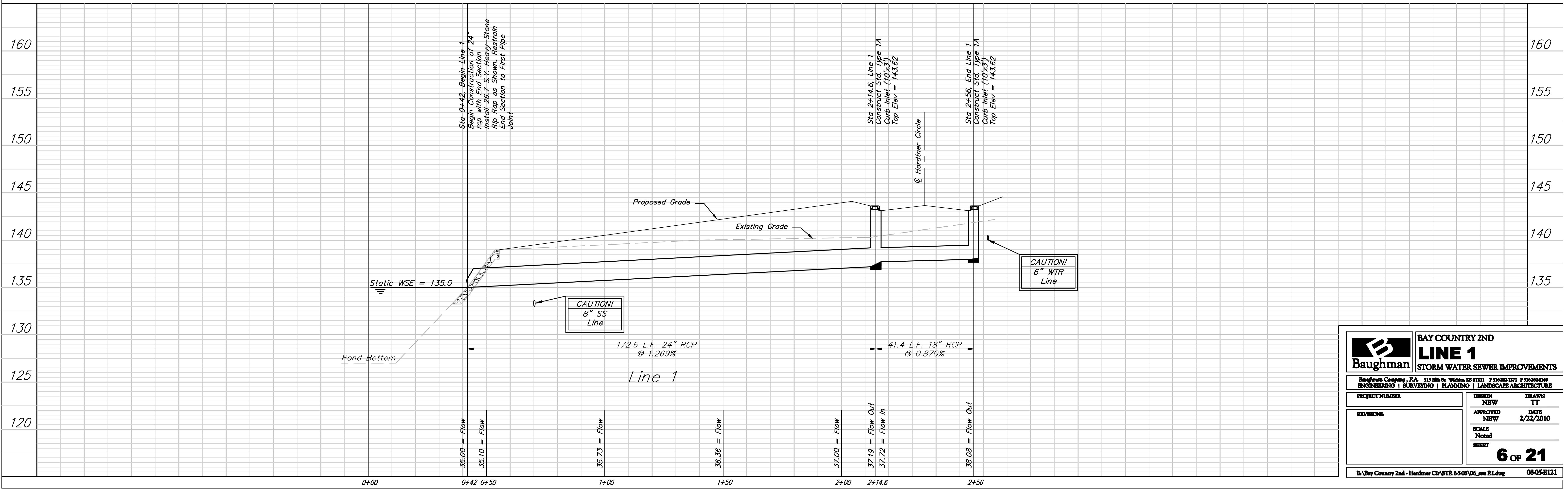
LIGHT-STONE RIP RAP

RES. "A"

Existing Pond



Scale: 1" = 20' Horizontal
 1" = 5' Vertical
 = Iron



Baughman		BAY COUNTY 2ND	
		LINE 1	
		STORM WATER SEWER IMPROVEMENTS	
Baughman Company, P.A. 315 11th St. Wichita, KS 67211 P 316-263-7771 F 316-263-0149			
ENGINEERING SURVEYING PLANNING LANDSCAPE ARCHITECTURE			
PROJECT NUMBER	DESIGN	DRAWN	
	NBW	TT	
REVISIONS	APPROVED	DATE	
	NBW	2/22/2010	
	SCALE		
	Noted		
	SHEET		
			6 OF 21
E:\Bay County 2nd - Hardtner Cr\STR 65-08\06_sws R1.dwg			08-05-2121