

# 2010 SANITARY SEWER RECONSTRUCTION PHASE 2

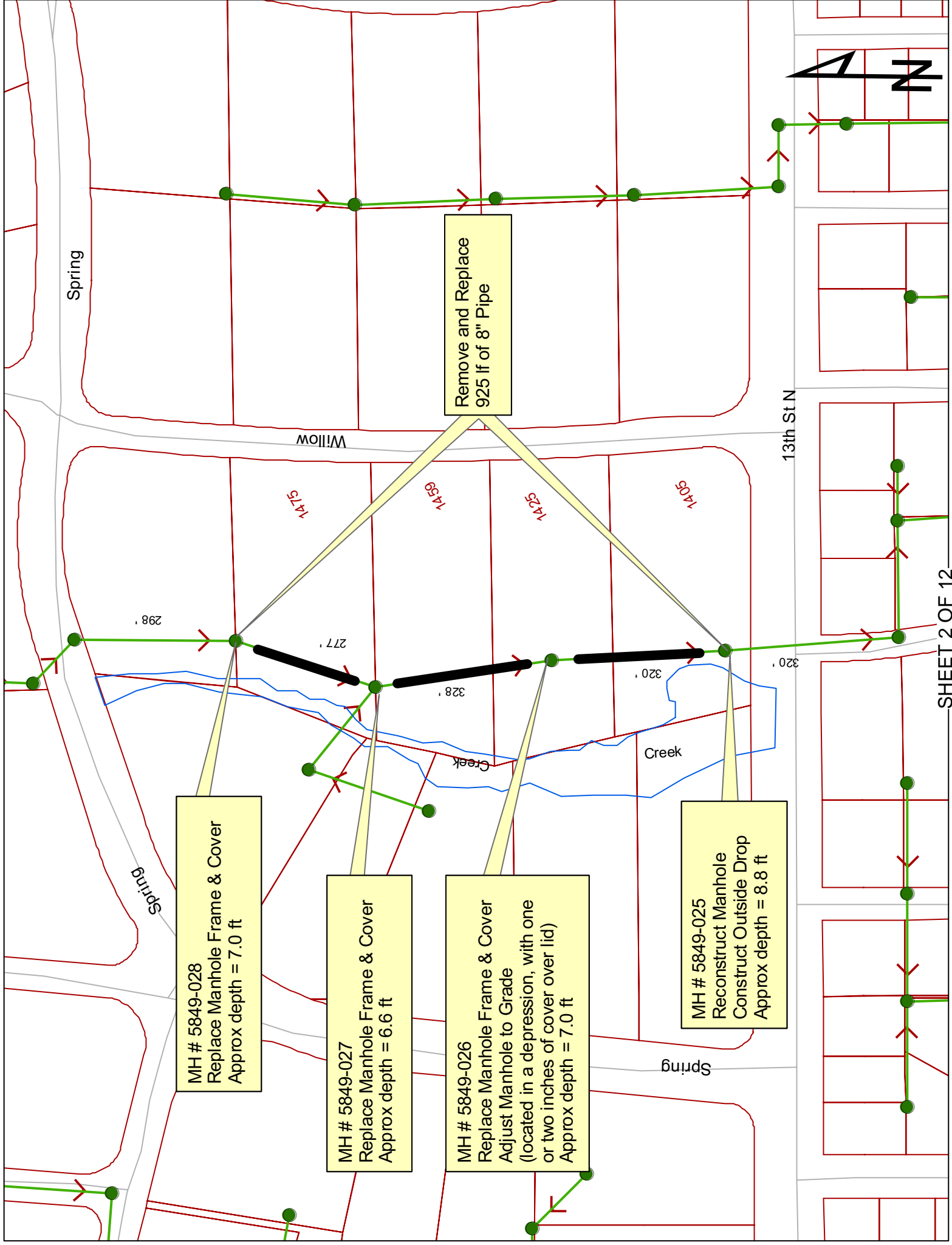
**OCA # 620556 / 468-84685**

( North of 13th Street North & West of Woodlawn )

<u>GENERAL LOCATION</u>	<u>PIPE SIZE</u>	<u>UPSTREAM MANHOLE</u>	<u>DOWNSTREAM MANHOLE</u>	<u>UPSTREAM INVERT ELEVATION</u> (City Datum)	<u>DOWNSTREAM INVERT ELEVATION</u> (City Datum)	<u>LENGTH</u> (FT.)
Easement west of Willow Street, north of 13th Street North	8"	5849-028	5849-027	203.36	202.60	277
	8"	5849-027	5849-026	202.60	201.29	328
	8"	5849-026	5849-025	201.29	200.01	320

Total Linear Feet = 925





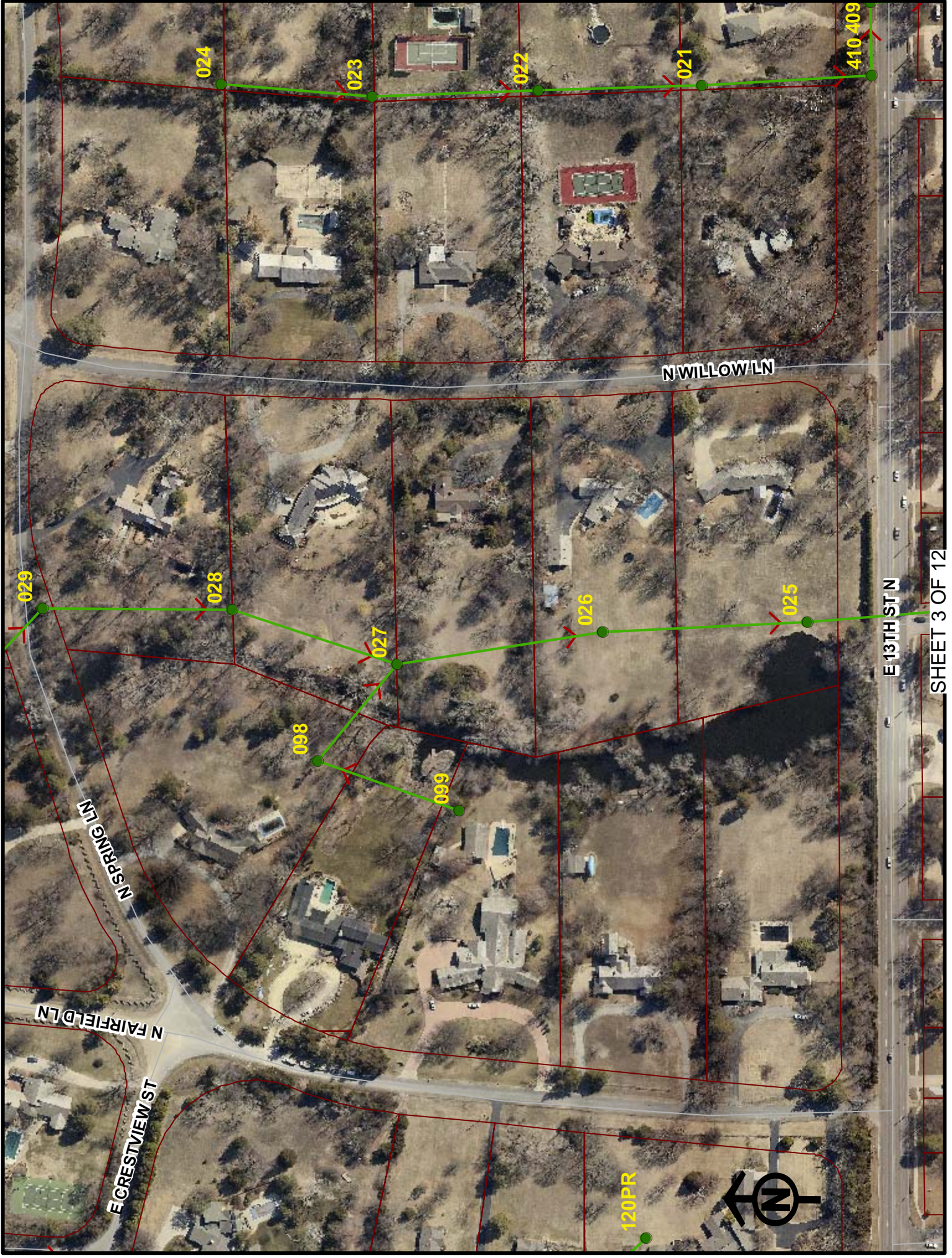
Remove and Replace  
925 lf of 8" Pipe

MH # 5849-028  
Replace Manhole Frame & Cover  
Approx depth = 7.0 ft

MH # 5849-027  
Replace Manhole Frame & Cover  
Approx depth = 6.6 ft

MH # 5849-026  
Replace Manhole Frame & Cover  
Adjust Manhole to Grade  
(located in a depression, with one  
or two inches of cover over lid)  
Approx depth = 7.0 ft

MH # 5849-025  
Reconstruct Manhole  
Construct Outside Drop  
Approx depth = 8.8 ft



N WILLOW LN

E 13TH ST N

N SPRING LN

N FAIRFIELD LN

E CRESTVIEW ST

120PR



024

023

022

021

410.409

029

028

027

026

025

098

099

# Television Inspection Master Report

6/10/2009

2:05 PM

US Structure: **5849-028**      1485 N WILLOW LN      Date Insp: 12/2/2008      Basin: **E04J**  
 DS Structure: **5849-027**      1475 N WILLOW LN      Dir Televised: Up->Down

**Pipe Information**

Shape: Round      Length Status:      Project No. : I-140  
 Dia/Ht: 8      Material: VCP      Index:  
 Length: 276.1      Slope: 0.400      Surface:

**Inspection Information**

Crew: 694      Percent Full:      Tape ID: **DVD #0459**

Obs. #	VTR Counter	Distance	Location	Description	Rating	Obsrvd (gpm)	Ratings			Remain (gpm)
							Est. (gpm)	Struct	Clean	
1		0.0	US Manhole	5849-028	1		0.000	0	0	0.000
2		9.6	Upper Left	(steady drip) Infiltration	3		0.000	0	0	0.000
3		103.6	Crown	Broken Pipe	4		0.030	78	0	0.030
4		107.5	Crown	Broken Pipe	4		0.030	78	0	0.030
5		111.7	Crown	(shifting pipe) Broken Pipe	4		0.030	78	0	0.030
6		116.2	Crown	Broken Pipe	4		0.030	78	0	0.030
7		119.9	Crown	Broken Pipe	4		0.030	78	0	0.030
8		124.0	Crown	Broken Pipe	4		0.030	78	0	0.030
9		128.4	Crown	Broken Pipe	4		0.030	78	0	0.030
10		130.3	Upper Left	(shifting pipe) Infiltration	3		0.000	0	0	0.000
11		132.1	Crown	Broken Pipe	4		0.030	78	0	0.030
12		136.6	Crown	Broken Pipe	3		0.010	60	0	0.010
13		140.0	Upper Left	Broken Pipe	3		0.010	60	0	0.010
14		145.1	Crown	Broken Pipe	4		0.030	78	0	0.030
15		145.1	Upper Left	Infiltration	4		0.000	0	0	0.000
16		153.3	Crown	Broken Pipe	4		0.030	78	0	0.030
17		153.3	Upper Left	Infiltration	3		0.000	0	0	0.000
18		156.4	Crown	Broken Pipe	3		0.010	60	0	0.010
19		160.9	Lower Left	Broken Pipe	3		0.010	60	0	0.010
20		170.2	East	Wye Service	5		0.000	400	0	0.000
				1475 NORTH WILLOW / roots	4" Clay Wye Connection					
21		277.3	DS Manhole	5849-027 / roots on bench	1		0.000	0	0	0.000

100' to 170' is in bad condition

# Television Inspection Master Report

6/10/2009

2:05 PM

US Structure: **5849-027**      1475 N WILLOW LN      Date Insp: 12/2/2008      Basin: **E04J**  
 DS Structure: **5849-026**      1425 WILLOW LA      Dir Televised: Up->Down

**Pipe Information**

Shape: Round      Length Status:      Project No. : I-140  
 Dia/Ht: 8      Material: VCP      Index:  
 Length: 328.1      Slope: 0.400      Surface:

**Inspection Information**

Crew: 694      Percent Full:      Tape ID: **DVD #0459**  
 Weather: Sunny      Purpose: TV Existing Line      Counter Start:

Obs. #	VTR Counter	Distance	Location	Description	Rating	Obsrvd (gpm)	Ratings		Remain (gpm)
							Est. (gpm)	Struct Clean	
1		0.0	US Manhole	5849-027					
2		37.3	Lower Right	Broken Pipe	3	0.010	60	0	0.010
3		40.9	Upper Right	Broken Pipe	3	0.010	60	0	0.010
4		45.0	Crown	Broken Pipe	4	0.030	78	0	0.030
5		49.0	Crown	Broken Pipe	4	0.030	78	0	0.030
6		51.4	Crown	Broken Pipe	4	0.030	78	0	0.030
7		53.4	Joint	Roots	3	0.008	5	8	0.008
8		53.9	Crown	Broken Pipe	3	0.010	60	0	0.010
9		57.5	Crown	Broken Pipe	3	0.010	60	0	0.010
10		65.9	Joint	Roots	3	0.008	5	8	0.008
11		66.2	Crown	Broken Pipe	3	0.010	60	0	0.010
12		69.3	Crown	Broken Pipe	3	0.010	60	0	0.010
13		89.8	Joint	Roots	3	0.008	5	8	0.008
14		123.9	East	Wye Service	1	0.000	0	0	0.000
1459 NORTH WILLOW				4" Clay Wye Connection					
15		129.1	Joint	Roots	3	0.008	5	8	0.008
16		166.3	Joint	Roots	3	0.008	5	8	0.008
17		206.2	Joint	Roots	3	0.008	5	8	0.008
18		231.1	Upper Right	Broken Pipe	3	0.010	60	0	0.010
19		267.4	Crown	Broken Pipe	4	0.030	78	0	0.030
20		271.4	Lower Left	Broken Pipe	3	0.010	60	0	0.010
21		324.9	Crown	Broken Pipe	2	0.008	44	0	0.008
22		329.4	DS Manhole	5849-026	1	0.000	0	0	0.000

At 287' pipe dips downward a little



# Television Inspection Master Report

6/10/2009

2:05 PM

US Structure: **5849-026**      1425      WILLOW LA      Date Insp:      12/2/2008      Basin:      E04J  
 DS Structure: **5849-025**      1405      WILLOW LA      Dir Televised:Up->Down

**Pipe Information**

Shape:      Round      Length Status:      Project No. : I-140  
 Dia/Ht:      8      Material:      VCP      Index:  
 Length:      319.8      Slope:      0.400      Surface:

**Inspection Information**

Crew:      694      Percent Full:      Tape ID:      **DVD #0459**  
 Weather:      Sunny      Purpose:      TV Existing Line      Counter Start:  
 Surface Cond: Trees      Flow:      Normal Flow      Counter Stop:

Obs. #	VTR Counter	Distance	Location	Description	Rating	Obsrvd (gpm)	Ratings			Remain (gpm)
							Est. (gpm)	Struct	Clean	
1		0.0	US Manhole	5849-026	1		0.000	0	0	0.000
(note: pipe dips downward immediately, for about three feet, then flattens back out at 10')										
2		7.8	Upper Left	Grease	3		0.000	0	5	0.000
3		14.0	Upper Left	Broken Pipe	3		0.010	60	0	0.010
4		18.6	Crown	Broken Pipe	3		0.010	60	0	0.010
5		21.8	Crown	Broken Pipe	4		0.030	78	0	0.030
6		30.2	Crown	Broken Pipe	4		0.030	78	0	0.030
7		39.9	East	Wye Service	1		0.000	0	0	0.000
1425 NORTH WILLOW				4" Clay Wye Connection						
8		48.7	Crown	Broken Pipe	3		0.010	60	0	0.010
9		79.2	Upper Left	Grease	3		0.000	0	5	0.000
10		81.1	Crown	Broken Pipe	4		0.030	78	0	0.030
11		85.2	Crown	Broken Pipe	3		0.010	60	0	0.010
12		89.7	Crown	Broken Pipe	3		0.010	60	0	0.010
13		93.5	Crown	Broken Pipe	4		0.030	78	0	0.030
14		90.0		Stopped Inspection	4		0.000	0	0	0.000
INVERT IS BUSTED / CAMERA CANNOT GET PAST THIS BROKEN PIPE										

**SEE REVERSE SETUP**

# Television Inspection Master Report

6/10/2009

2:05 PM

US Structure: **5849-026**      1425      WILLOW LA      Date Insp:      12/4/2008      Basin:      E04J  
 DS Structure: **5849-025**      1405      WILLOW LA      Dir Televised:      Down->Up

**REVERSE SETUP:**

Obs. #	VTR Counter	Distance	Location	Description	Rating	Obsrvd (gpm)	Ratings			Remain (gpm)
							Est. (gpm)	Struct	Clean	
1		0.0	DS Manhole	5849-025 (tv against the flow)						
2		0.0	<i>Continued Inspection</i>							
3		14.8	Joint	Roots	3	0.008	5	8	0.008	
4		21.5	Start	Sag	3	0.000	5	0	0.000	
5		35.5	Lower Left	Broken Pipe	3	0.010	60	0	0.010	
6		40.0	Crown	Broken Pipe	4	0.030	78	0	0.030	
7		58.7	East	Wye Service	5	0.000	400	0	0.000	
1405 NORTH WILLOW      4" Clay Wye Connection / FULL OF ROOTS										
8		69.8	Joint	Roots	3	0.008	5	8	0.008	
9		82.4	Joint	Roots	3	0.008	5	8	0.008	
10		99.0	Start	Sag begins	4	0.000	10	0	0.000	
11		107.0	Crown	Broken Pipe	3	0.010	60	0	0.010	
12		110.9	Crown	Broken Pipe	3	0.010	60	0	0.010	
13		130.1	Upper Left	Grease	3	0.000	0	5	0.000	
14		171.9	Crown	Broken Pipe	4	0.030	78	0	0.030	
15		196.8	Crown	Broken Pipe	3	0.010	60	0	0.010	
16		201.0	Crown	Broken Pipe	4	0.030	78	0	0.030	
17		205.1	Crown	Broken Pipe	4	0.030	78	0	0.030	
18		212.2	Crown	Broken Pipe	4	0.030	78	0	0.030	
19		217.2	Crown	Broken Pipe	3	0.010	60	0	0.010	
20		220.8	Crown	Broken Pipe	4	0.030	78	0	0.030	
21		224.8	Crown	Broken Pipe	4	0.030	78	0	0.030	
22		225.7	Crown	Broken Pipe	3	0.010	60	0	0.010	
23		228.9	Crown	Broken Pipe	4	0.030	78	0	0.030	
24		230.0	Stopped Inspection / same place as above		4	0.000	0	0	0.000	