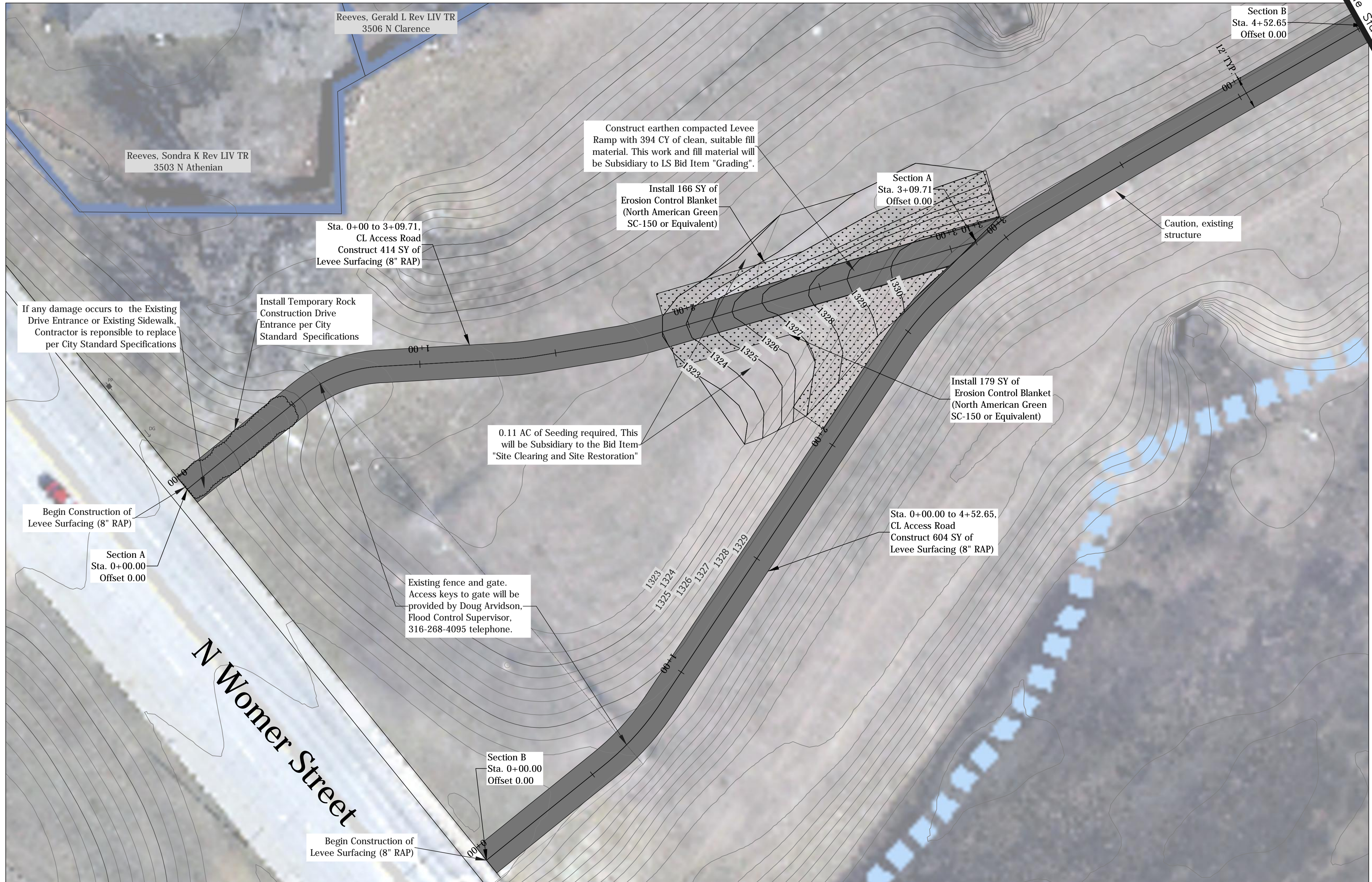
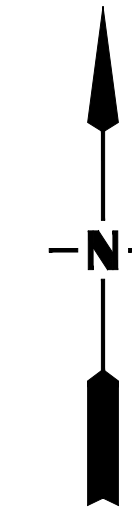
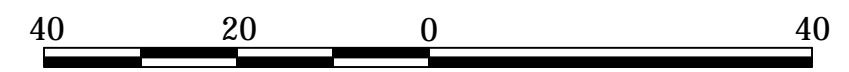


S:\Maintenance\Pump Stations\Pump Station #11 37th & Woodrow\Mill road \_ levee top\Pump Station #11 access road plans\PS #11 access roads.dwg, 6/3/2010 3:34:47 PM, 1:1



**SWS IMPROVEMENTS  
Pump Station #11  
Access Roads, Ditch & Pad**

STORM WATER ENGINEER  
**Scott Lindebak, P.E.**

PROJECT # 468-84684	OCA NUMBER 660809	DATE 05/10
STORM WATER MANAGEMENT CITY HALL - EIGHTH FLOOR 455 NORTH MAIN STREET WICHITA, KANSAS 67202-1620 (316) 268-4369 (316) 337-9027 FAX		DESIGN TD/KSF
		DRAWN KSF
		SHEET 4 OF 11