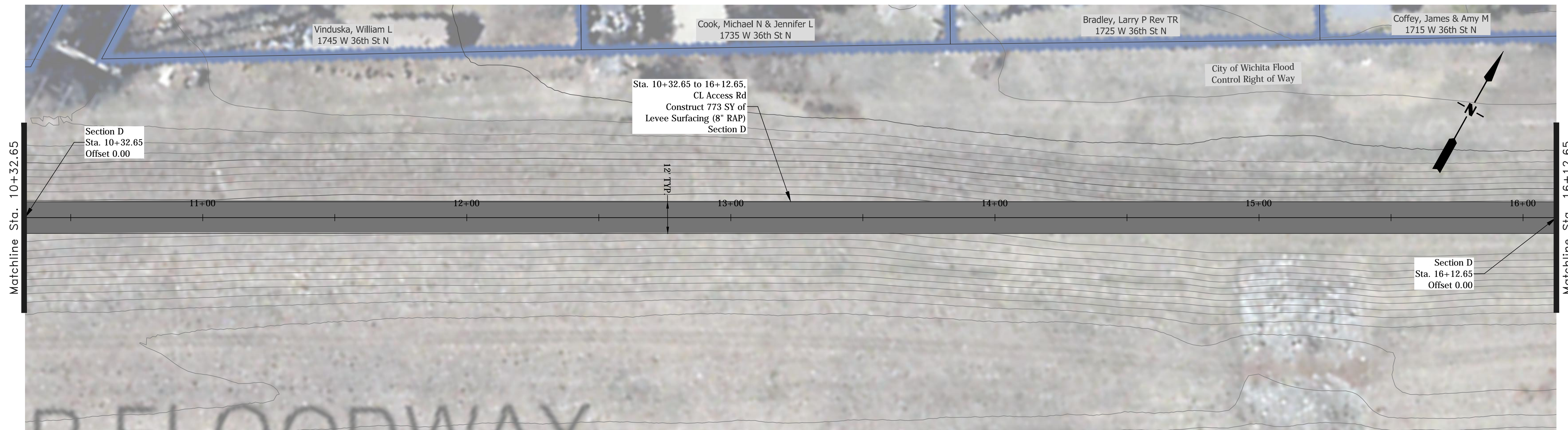
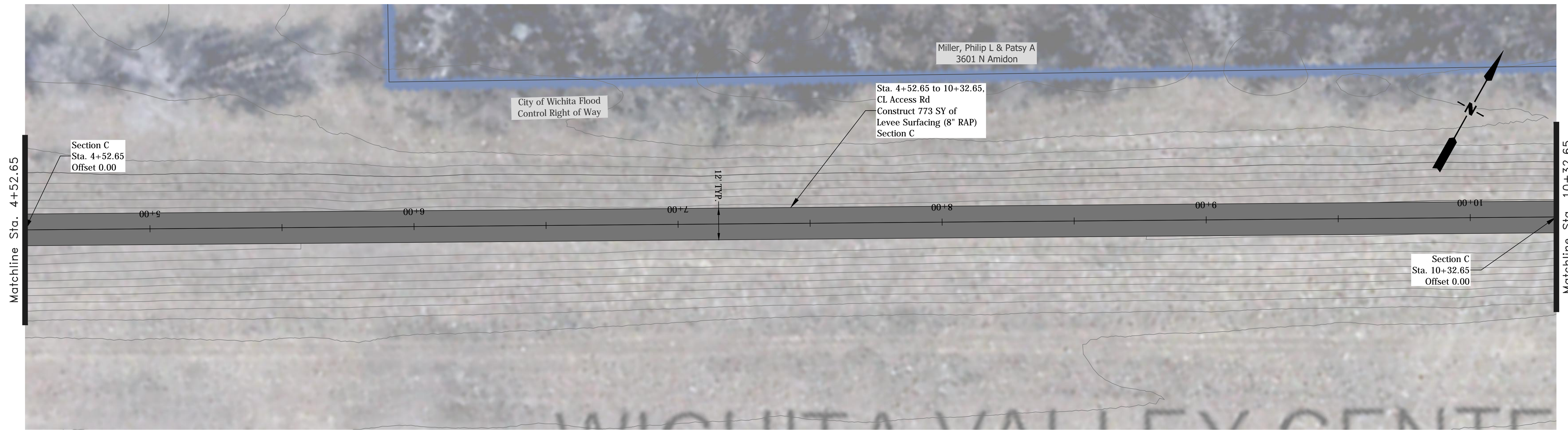
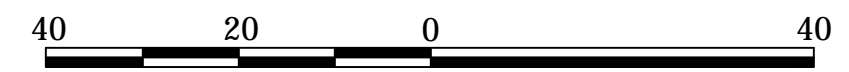


S:\Maintenance\Pump Stations\Pump Station #11 37th & Woodrow\Mill road -- levee top\Pump Station #11 access road plans\PS #11 access road plans\PS #11 access roads.dwg, 6/2/2010 11:44:40 AM, 1:1



**SWS IMPROVEMENTS**  
**Pump Station #11**  
*Access Roads, Ditch & Pad*

STORM WATER ENGINEER  
**Scott Lindebak, P.E.**

PROJECT #	OCA NUMBER	DATE
468-84684	660809	05/10
DESIGN	DRAWN	
TD/KSF	KSF	
STORM WATER MANAGEMENT CITY HALL - EIGHTH FLOOR 455 NORTH MAIN STREET WICHITA, KANSAS 67202-1620 (316) 268-4369 (316) 357-9027 FAX		SHEET <b>5 OF 11</b>