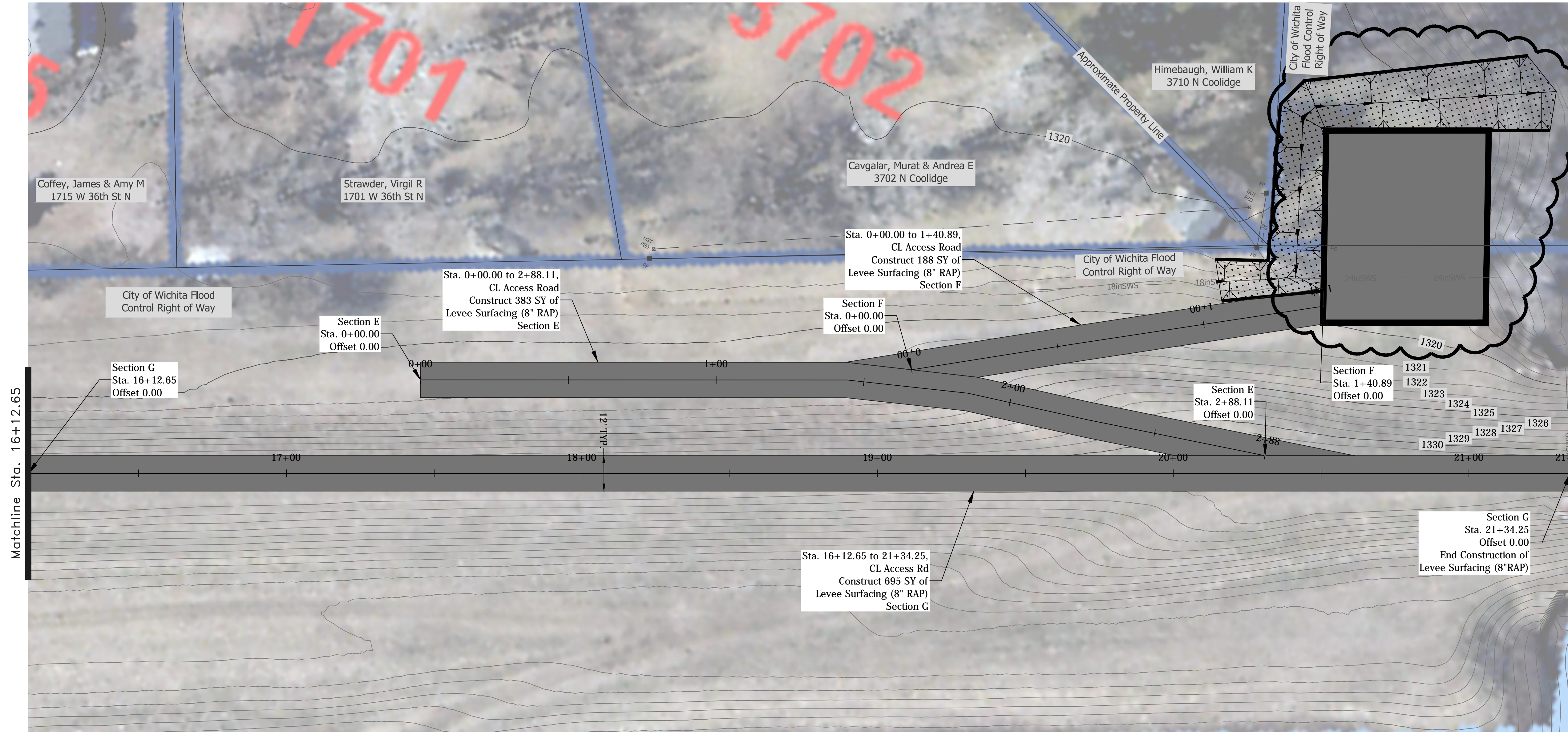
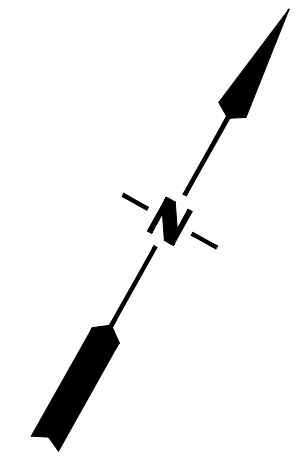
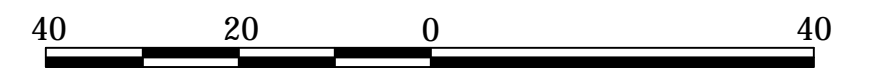


S:\Maintenance\Pump Stations\Pump Station #11 37th & Woodrow\Mill road -- levee top\Pump Station #11 access road plans\PS #11 access roads.dwg, 6/2/2010 11:45:43 AM, 1:1



<b>SWS IMPROVEMENTS</b>		
<b>Pump Station #11</b>		
<i>Access Roads, Ditch &amp; Pad</i>		
STORM WATER ENGINEER		
<b>Scott Lindebak, P.E.</b>		
PROJECT #	OCA NUMBER	DATE
468-84684	660809	05/10
STORM WATER MANAGEMENT	DESIGN	DRAWN
CITY HALL - EIGHTH FLOOR	TD/KSF	KSF
455 NORTH MAIN STREET	SHEET	
WICHITA, KANSAS 67202-1620	6 OF 11	
(316) 268-4369		
(316) 337-9027 FAX		