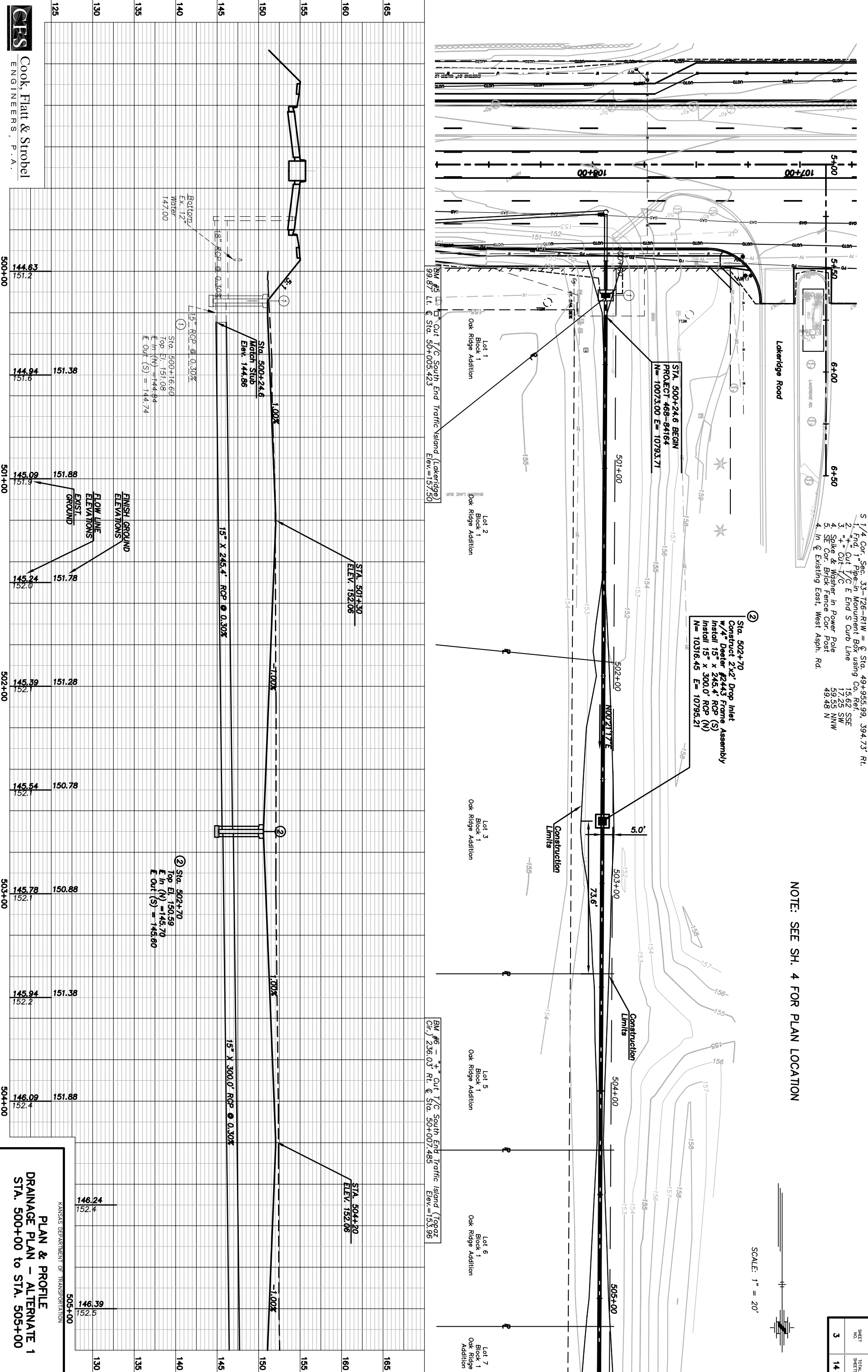


PROFILE	SURVEYED	BY	DATE
NOTE BOOK	PLOTTED		
NO.	GRADES CHECKED		
	PK'S NOTED		
	STRUCTURE NOTATIONS CHECKED		

PROFILE	SURVEYED	BY	DATE
NOTE BOOK	PLOTTED		
NO.	GRADES CHECKED		
	PK'S NOTED		
	STRUCTURE NOTATIONS CHECKED		

1"=20'
03546-pp05

J:\2003P\03546\A\03 P\1.dwg 3/16/2006 11:18:45 AM CST



- S 1/4 Cor. Sec. 33-126-R1W = C Sta. 49+955.99, 394.73' RT.
1. Find 1 Pipe-in Monument Box using Co. Ref.
 2. + Cut T/C E End S Curb Line
 3. + Cut T/C
 4. Spike & Washer in Power Pole
 5. Set Cor. Brick Fence Cor. Post
 6. In Existing East, West Asph. Rd.

② Sta. 502+70
Construct 2x2 Drop Inlet
w/ 1/4" Dealer #2443 Frame Assembly
Install 15" x 245.0" RCP (S)
N = 10316.45 E = 10795.21

NOTE: SEE SH. 4 FOR PLAN LOCATION

SCALE: 1" = 20'

SHEET NO.	3
TOTAL SHEETS	14

PLAN & PROFILE
DRAINAGE PLAN - ALTERNATE 1
STA. 500+00 to STA. 505+00

KANSAS DEPARTMENT OF TRANSPORTATION