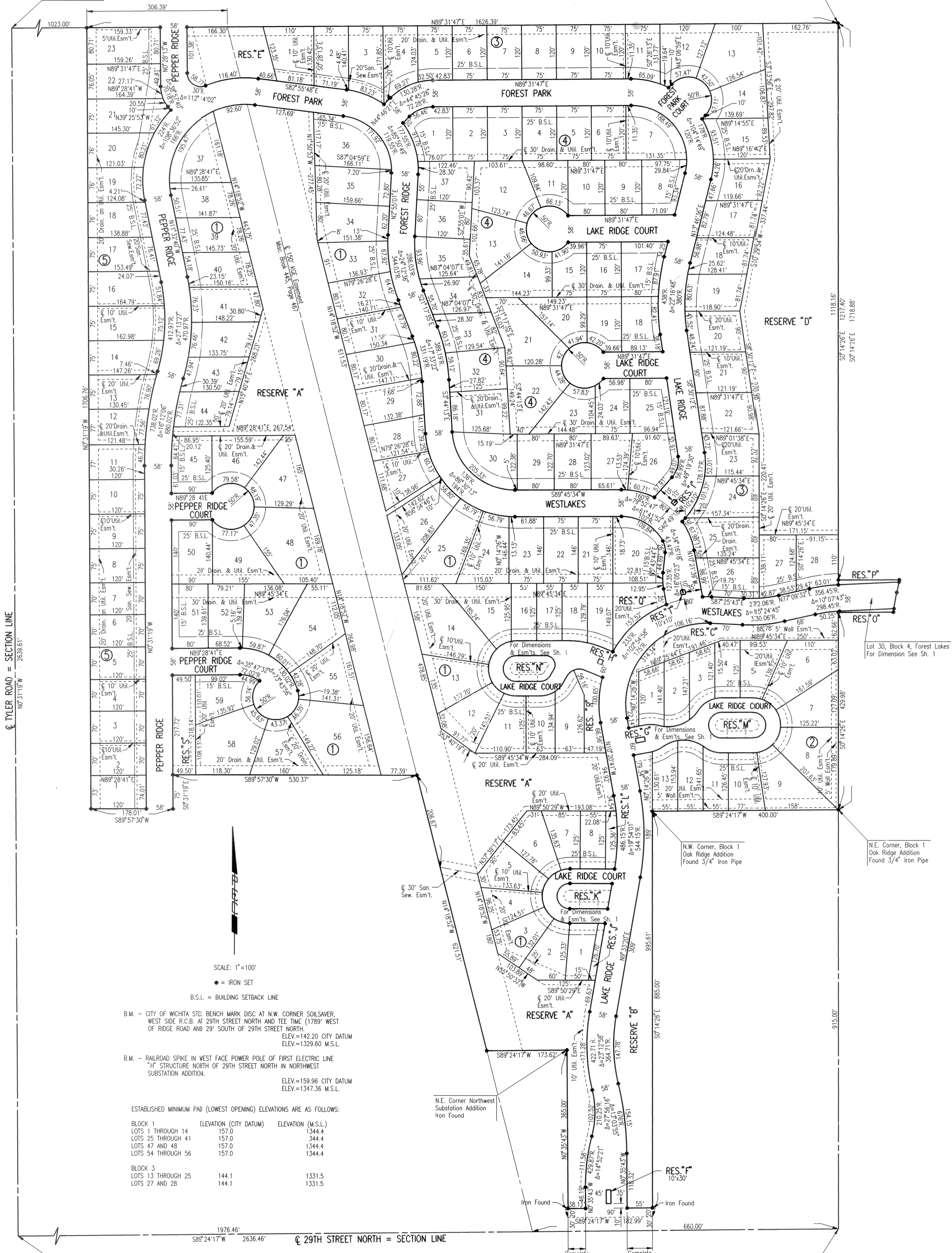


# FOREST LAKES WEST

## AN ADDITION TO WICHITA, SEDGWICK COUNTY, KANSAS

N.W. Corner S.W. 1/4  
Sec. 33, T26S, R1W  
of the 6th P.M.  
Found Limestone w/  
40d Nail in Center

N.E. Corner S.W. 1/4  
Sec. 33, T26S, R1W  
of the 6th P.M.  
Set 3/4" Iron Pipe



SCALE: 1"=100'  
● = IRON SET  
B.S.L. = BUILDING SETBACK LINE

B.M. - CITY OF WICHITA STD. BENCH MARK DISC AT N.W. CORNER SOILSAVER,  
WEST SIDE R.C.B. AT 29TH STREET NORTH AND TEE TIME (1789) WEST  
OF RIDGE ROAD AND 29' SOUTH OF 29TH STREET NORTH.  
ELEV.=142.20 CITY DATUM  
ELEV.=1329.60 M.S.L.

B.M. - RAILROAD SPIKE IN WEST FACE POWER POLE OF FIRST ELECTRIC LINE  
"H" STRUCTURE NORTH OF 29TH STREET NORTH IN NORTHWEST  
SUBSTATION ADDITION.  
ELEV.=159.96 CITY DATUM  
ELEV.=1347.36 M.S.L.

ESTABLISHED MINIMUM PAD (LOWEST OPENING) ELEVATIONS ARE AS FOLLOWS:

BLOCK	ELEVATION (CITY DATUM)	ELEVATION (M.S.L.)
BLOCK 1		
LOTS 1 THROUGH 14	157.0	1344.4
LOTS 25 THROUGH 41	157.0	1344.4
LOTS 47 AND 48	157.0	1344.4
LOTS 54 THROUGH 56	157.0	1344.4
BLOCK 3		
LOTS 13 THROUGH 25	144.1	1331.5
LOTS 27 AND 28	144.1	1331.5

Lot 30, Block 4, Forest Lakes  
For Dimension See Sh. 1

N.W. Corner, Block 1  
Oak Ridge Addition  
Found 3/4" Iron Pipe

N.E. Corner, Block 1  
Oak Ridge Addition  
Found 3/4" Iron Pipe

S.W. Corner S.W. 1/4  
Sec. 33, T26S, R1W  
of the 6th P.M.  
Found 1" Iron Pipe

S.E. Corner S.W. 1/4  
Sec. 33, T26S, R1W  
of the 6th P.M.  
Found Thimble

This digital plat record accurately reproduces in all details the original plat filed with the Sedgwick County Register of Deeds. Digitized under the supervision of Register of Deeds Bill Meek by Sedgwick County Geographic Information Systems.

Bill Meek, Register of Deeds  
*Digitized rendition of original signature*

Inches

Inches

DSMR: JGP. OPER. DEP. SCALE: 1"=100.00  
03-03-1997 09:20:41 FINAL

PC 80-7B

PC 80-7B