

**CP 4603** POT Sta. 46+35.63  
 Found Hill Nail at Point  
 N 1692514.1488 E 1650537.0709  
 1. @ 11th Street  
 2. 1/2" Iron Pin at Property Corner  
 3. PK Nail at West Face of Powerpole  
 4. Top Center of NW 2" Anchor Bolt

E-W 28.90' N  
 22.66' NNW  
 23.51' S

**CP 4602** PI Sta. 48+60.35 Deflection Angle = 0°04'20" Lt.  
 Set PK Nail at Point  
 N 1692517.8695 E 1650761.7499  
 1. @ 11th Street ±  
 2. Steel Post at Chainlink Fence Corner  
 3. PK Nail at North Face of Power Pole  
 4. 60d Nail at @ of Santa Fe Street  
 5. PK Nail at South Face of Powerpole

E-W 61.67' ENE  
 57.65' ESE  
 86.50' E  
 37.30' NW

Sawcut, Remove and Replace Surface Course as necessary to provide a neat line. This work to be subsidiary to Asphalt Pavement.

**CP 4601** PI Sta. 53+38.71 Deflection Angle = 0°01'53" Rt.  
 Set PK Nail at Point  
 N 1692525.7014 E 1651240.0540  
 1. @ 11th Street ±  
 2. Back of Curb  
 3. Top Center of Fire Hydrant  
 4. @ of West Rail of the East Railroad Tracks  
 5. NW Anchor Bolt of Railroad Signal Base

E-W 15.75' N  
 45.40' NE  
 77.53' E  
 58.42' SE

**CP 4600** POT Sta. 60+76.62  
 Found 1/2" Iron Pin in Thimble at Point  
 N 1692537.8164 E 1651977.8353  
 1. @ 11th Street  
 2. West R/W of Washington Avenue  
 3. No other Ties

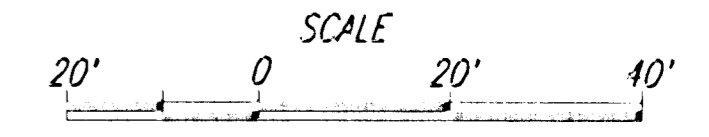
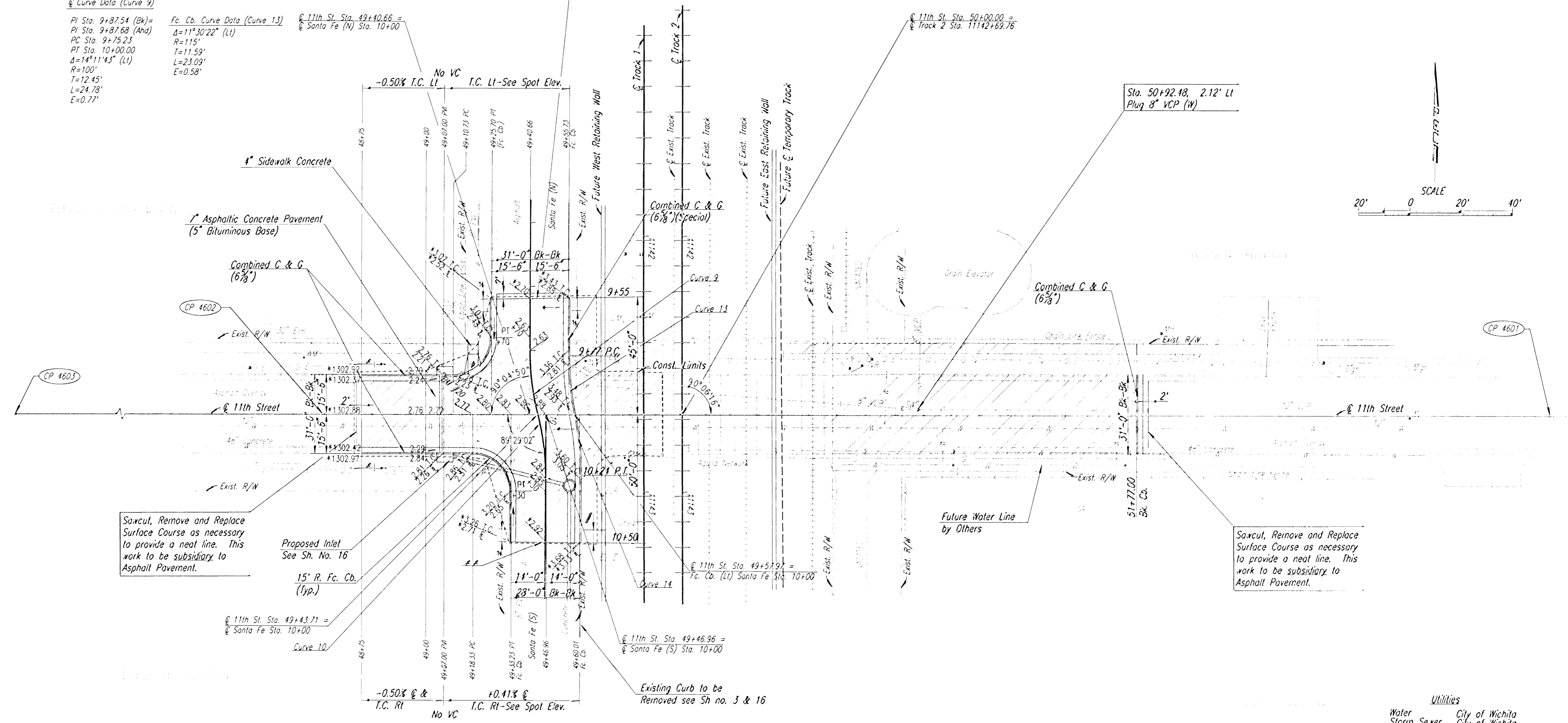
E-W  
 N-S

**@ Curve Data (Curve 9)**

PI Sta. 9+87.54 (Bk)=  
 PI Sta. 9+87.68 (Ahd)  
 PC Sta. 9+75.23  
 PT Sta. 10+00.00  
 Δ=14°11'43" (Lt)  
 R=100'  
 T=12.45'  
 L=24.78'  
 E=0.77'

**Fc. Cb. Curve Data (Curve 13)**  
 Δ=11°30'22" (Lt)  
 R=115'  
 T=11.59'  
 L=23.09'  
 E=0.58'

@ 11th St. Sta. 49+40.66 =  
 @ Santa Fe (N) Sta. 10+00



Sawcut, Remove and Replace Surface Course as necessary to provide a neat line. This work to be subsidiary to Asphalt Pavement.

Sawcut, Remove and Replace Surface Course as necessary to provide a neat line. This work to be subsidiary to Asphalt Pavement.

- Utilities**
- Water City of Wichita
  - Storm Sewer City of Wichita
  - Gas Aquila Network
  - Electric Westar Energy
  - TV Cox Communications

**LEGEND**

DATE	
BY	

101.dgn  
 h.dgn  
 10-73-2000 15:12:18 LAST REV: 4-28-2003 BY: drp  
 SCALE: 1"=20'