

PROJECT NO.	SHEET NO.	TOTAL SHEETS
468-83473	8	60

CP 5506 POT Sta. 46+31.21
Set 60d Nail at Point
N 1695135.2003 E 1650483.7508
1. @ 15th Street E-W
2. @ St. Francis 38.00' E
3. PK Nail 38.26' WSW
4. SW Corner of Block Building 25.00' N
5. Top Center of Fire Hydrant 31.26' NW

CP 5507 Set PK Nail at Point
N 1695131.5705 E 1650445.5976
1. @ St. Francis N-S
2. @ 15th Street 5'± N
3. Top Center of Fire Hydrant 40.55' NE
4. Center of 2" Steel Corner Post of Chain Link Fence 39.41' NW

CP 5505 POT Sta. 48+98.31
Set 60d Nail at Point
N 1695137.8447 E 1650750.8428
1. @ 15th Street E-W
2. @ Santa Fe 57.50' E
3. Top Center of Fire Hydrant 47.57' SE
4. Center of 3" Steel Corner Post of Chain Link Fence 37.02' NE

CP 5521 Found Chiseled "x" at Point
N 1695163.9798 E 1650778.1189
1. Sidewalk on SE Corner of Lot 27
2. No other Ties

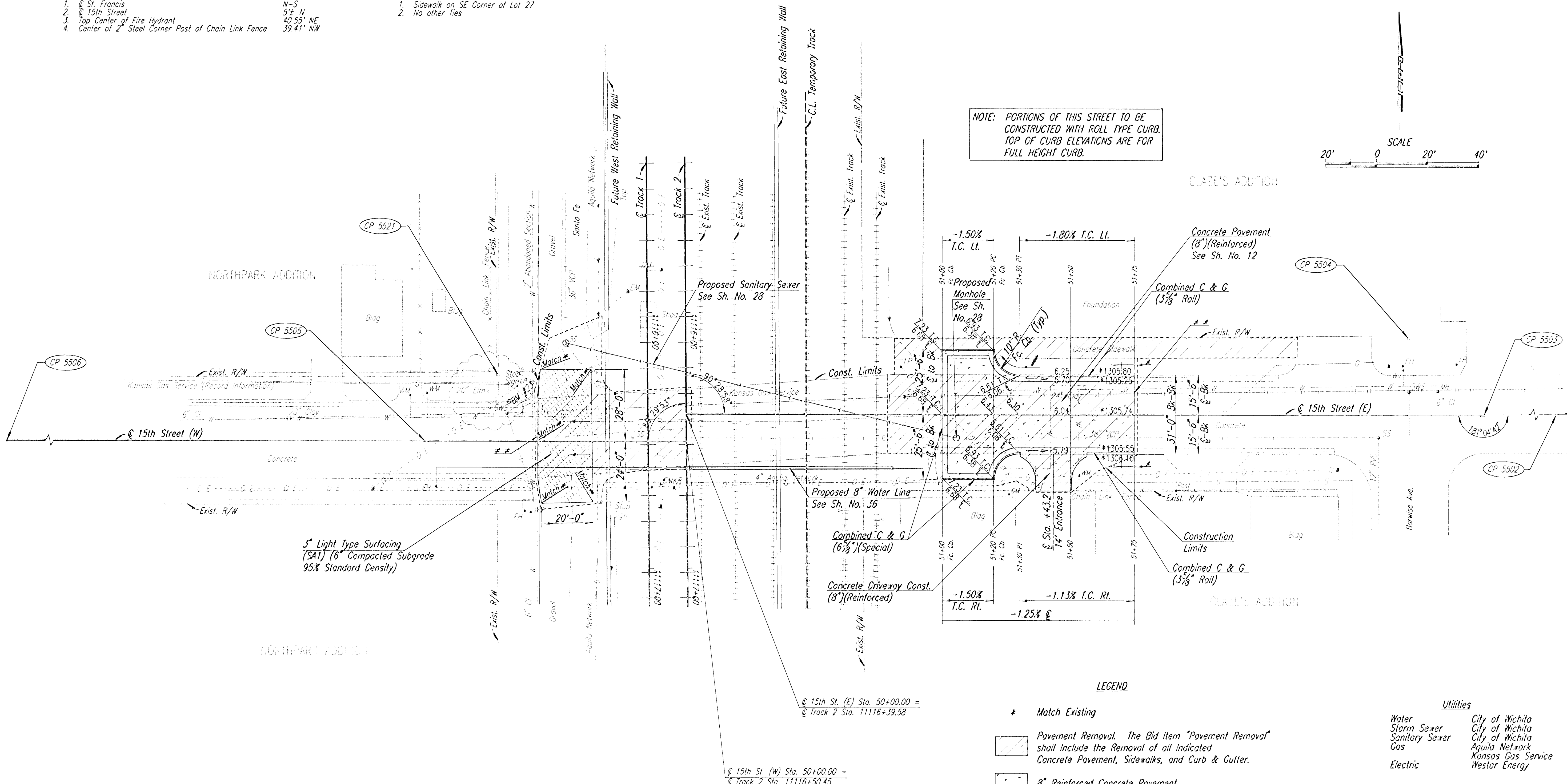
CP 5503 PI Sta. 53+11.17
Set 60d Nail at Point
N 1695152.9043 E 1651163.4762
1. @ 15th Street E-W
2. @ Barwise Avenue South 29.00' W
3. @ Concrete Joint on Barwise Avenue South 29.10' W
4. Top Center of Fire Hydrant 37.16' NW
5. Center of 3" Steel Corner Post of Fence 29.35' S

CP 5504 Found Chiseled "x" at Point
N 1695182.3115 E 1651134.0553
1. North R/W of 15th Street
2. ± @ Barwise Avenue
3. No other Ties

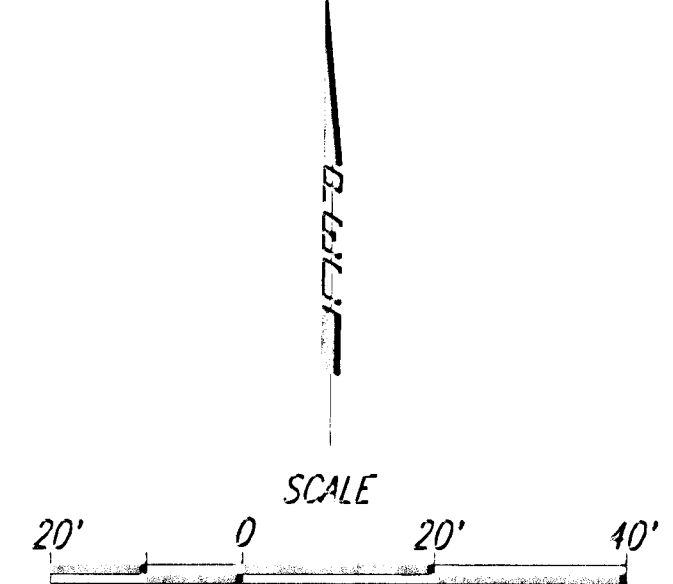
CP 5502 POT Sta. 57+78.10
Found Iron Pin in Thimble of Point
N 1695166.4688 E 1651630.2049
1. Intersection of @ 15th Street & @ Mosley Avenue
2. No other Ties

BY	DATE

DSNR: RWM OPER: SVB SCALE: 1"=20' 1/1999/99189/Bidset2/PLAN_15TH.DGN 10-13-2000 15:12:18 LAST REV: 4-4-03 BY: drp



NOTE: PORTIONS OF THIS STREET TO BE CONSTRUCTED WITH ROLL TYPE CURB. TOP OF CURB ELEVATIONS ARE FOR FULL HEIGHT CURB.



LEGEND

- Match Existing
- [Hatched Box] Pavement Removal. The Bid Item "Pavement Removal" shall include the Removal of all Indicated Concrete Pavement, Sidewalks, and Curb & Gutter.
- [Solid Box] 8" Reinforced Concrete Pavement
- [Hatched Box] 4" Light Type Surfacing
- 5' Transition from Existing Curb & Gutter to Combined Curb & Gutter (3 7/8" Roll). To be bid and paid for as "Combined Curb & Gutter (3 7/8" Roll)."
- 5' Transition from Curb & Gutter (6 7/8" Special) to Curb & Gutter (3 7/8").
- Saw Cut Line

Utilities

Water	City of Wichita
Storm Sewer	City of Wichita
Sanitary Sewer	City of Wichita
Gas	Aquila Network
Electric	Kansas Gas Service
	Nestor Energy

Note: See Sh. No. for Concrete Joint Detail.

This sheet designed by:



BM #23 - Chiseled "x" on Top of Curb, West End of Curb Return, Northwest Corner of Santa Fe & 15th Street Elevation=1306.82

3				
2				
1				
NO.	DATE	REVISIONS	BY	APP'D
CITY OF WICHITA				
WICHITA CENTRAL CORRIDOR				
15th Street				
DESIGNED	RWM	SCALE	1" = 20'	APP'D
DESIGN CK.		DETAILED	SVB	QUANTITIES
		DETAIL CK.		THALE CK.