

STATE	PROJECT NO.	YEAR	SHEET NO.	TOTAL SHEETS
KANSAS	87 N-0308-01	2005	1	37

INDEX OF SHEETS

SHEET NO	DESCRIPTION
1	TITLE SHEET
2	TYPICAL SECTIONS
3-5	PLAN SHEETS
6	STORM SEWER
7-12	PAVING DETAILS
13-14	DRAINAGE DETAILS
15	SUMMARY OF QUANTITIES
16-19	EROSION CONTROL BMPs
20	SEEDING
21-25	PAVEMENT MARKING & SIGNING
26	CONSTRUCTION SEQUENCE SUMMARY
27-30	TRAFFIC CONTROL DETAILS
31	DELETED
32-37	CROSS SECTIONS

**STATE OF KANSAS
DEPARTMENT OF TRANSPORTATION**

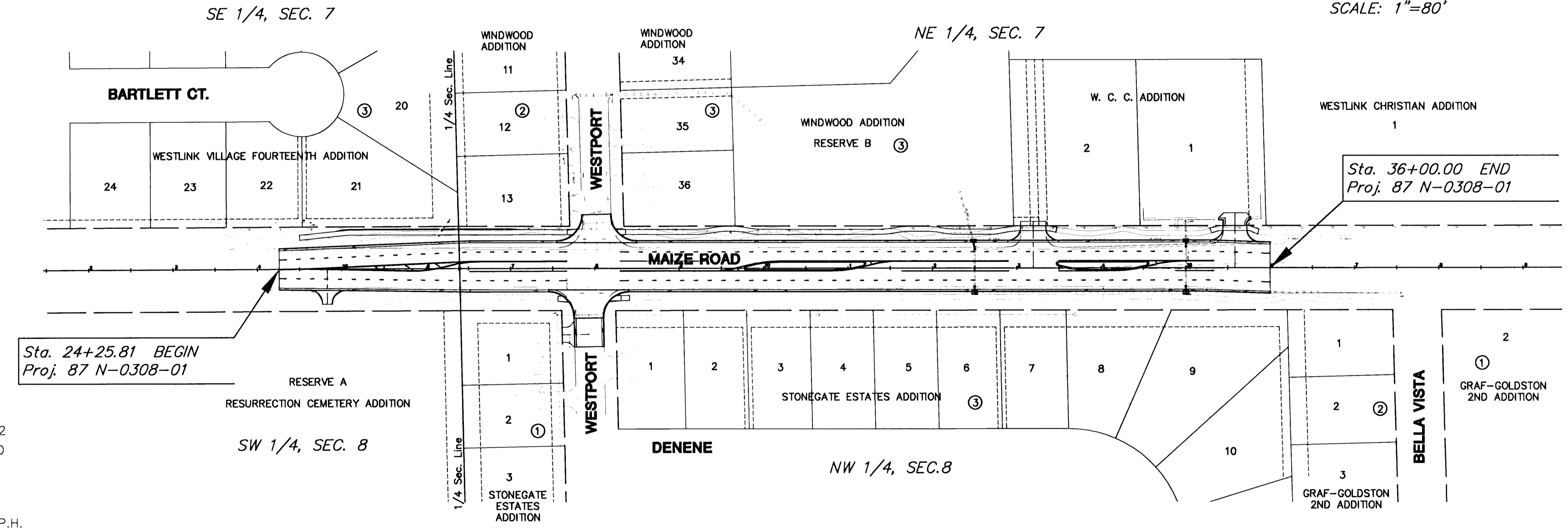


**PLAN AND PROFILE OF PROPOSED
MAIZE ROAD IMPROVEMENTS AT WESTPORT**

**FEDERAL AID PROJECT
CITY OF WICHITA PROJECT NO. 472-84244
CITY OF WICHITA O.C.A. NO. 706924
WICHITA, SEDGWICK COUNTY, KANSAS
POPULATION = 335,562**

**KDOT PROJ. NO. 87 N-0308-01
F.A. NO. STP N030 (801)
MILL AND OVERLAY
GRADING AND SURFACING
STORM SEWER
PAVEMENT MARKING
SEEDING**

DATE	3-15-04
BY	Marc/Justin MKEC
SURVEYED	4-12-04
CAD TECHNICIAN	DPG
DESIGNERS	JRA
SQUAD	KOOT



SCALE: 1"=80'

