

STREET PAVING FOR FAWNWOOD WITH INCIDENTAL SWS IMPROVEMENTS

to serve

AUBURN HILLS 16TH ADD. - PH. II

Fawnwood from the north line of Valley Hi Road,
north to the north line of the plat
Fawnwood Ct. (Lots 65-73, Block A) from the west line of Fawnwood,
west to and including the cul-de-sac
Valley Hi Road and Valley Hi Cir. from the west line of Lot 31, Block G,
west to and including the cul-de-sac
Fawnwood Ct. (Lots 39-48, Block A) from the west line of Fawnwood,
west to and including the cul-de-sac
Fawnwood Ct. (Lots 49-61, Block A) from the west line of Fawnwood,
west to and including the cul-de-sac
Fawnwood Ct. (Lots 34-40, Block G) from the east line of Fawnwood,
east to and including the cul-de-sac
Fawnwood Ct. (Lots 41-46, Block G) from the east line of Fawnwood,
east to and including the cul-de-sac

CITY OF WICHITA, KANSAS

James L. Armor, P.E. City Engineer

Project Number

472-84291

O.C.A. Number:

765999

GENERAL NOTES:

- Contractor will be required to provide notice to utility companies a minimum of forty-eight (48) hours prior to any excavation, as follows:
Kansas One-Call 687-2470
The Contractor must notify the following in case of an emergency:
Cox Communications 262-4270
Kansas Gas Service 1-888-482-4950
Westar Energy 383-8650
Aquila Energy 1-800-303-0357
SBC 268-2245
City of Wichita Water Dept. 268-4563
City of Wichita Sewer Maint. 268-4024
City of Wichita Storm Sewer Maint. 268-4090
City of Wichita Traffic Maint. 268-4034
Conoco Phillips Pipeline Co. 1-877-267-2290
Southern Star Pipeline Co. 529-0600
Kinder-Morgan Pipeline Co. 1-888-844-5658
Enbridge Pipelines (913) 764-6015
- Utility service lines, poles, valve boxes, meters, and etcetera are to be adjusted as necessary by others prior to construction unless the plans specifically call for their adjustment by the Contractor or unless the plans specifically identify a utility to be adjusted by its owner during construction. Existing utilities and their location, as shown on the plans, represent the best information obtainable for design. The Contractor will be required to work around existing utilities within the right-of-way which do not conflict with proposed construction.
- Rubble from the removal of miscellaneous structures and excess excavation which is to be wasted shall be disposed of on sites to be provided by the Contractor. These sites shall be approved by the Engineer as to suitability, appearance and site location. Locations, in the opinion of the Engineer, that will leave an unsightly appearance will not be approved. All disposal sites must be approved by the Kansas Department of Health and Environment. Material either stockpiled or disposed of in a flood plain would require a Kansas State Board of Agriculture permit. Any material dumped in waters of the United States or wetlands is subject to U.S. Corps of Engineers permitting regulations. Any material buried or stockpiled beyond approved construction limits would require additional archaeological investigations unless buried in a previously approved borrow location.
- Trees and shrubs in public right-of-way which are in direct conflict with proposed new construction shall be removed by the Contractor ONLY with the Developer or Baughman Company approval. Trees and shrubs which are not in direct conflict with proposed new construction shall be saved and protected from damage.
- The Contractor shall give all property owners and/or tenants of developed property abutting the construction of this project a minimum of ten (10) days notice prior to start of construction.
- The Contractor shall be responsible for preserving property irons. The Contractor will be required to re-establish any property irons which are damaged or destroyed by his construction operations. Such irons shall be re-established by a licensed land surveyor in accordance with state laws.
- All existing and proposed erosion control measures including silt fencing, erosion control mat, straw bales, inlet barriers, and const. entrance shall be maintained throughout construction by the contractor and until project is accepted by the City of Wichita. The on-site engineer shall complete weekly reports on the status of erosion control measures. The contractor shall be required to comply with maintenance and/or replacement of erosion control measures as determined by the on-site engineer until project is accepted by City of Wichita. Maintenance and/or replacement of erosion control measures to be paid by L.S. bid item "Site Clearing & Restoration".
- All excess excavation shall remain on-site and shall be stockpiled or spread at a location determined by the engineer.
- The contractor shall adjust valve boxes as necessary to match proposed grade. Cost to be included in bid item, "Site Clearing & Restoration".
- A saw cut of at least one-half the depth of existing surface courses or one-fourth the depth of the existing total pavement thickness shall be provided at locations where proposed construction abuts the existing surface course or pavement for which partial removal of that surface or pavement is required. Sawed joint to facilitate removal within three (3) feet of existing joints will not be permitted and for such instances the limits of removal shall extend to the existing joint. Such saw cuts will not be paid for directly and this cost shall be considered as subsidiary to the removal of the surface or pavement.
- Limits of earthwork shall match existing ground elevations at the right-of-way line unless otherwise noted on the plans with a new finished grade elevation. When a new finished grade elevation is shown, the earthwork shall extend one foot beyond the right-of-way line and then slope up or down using permissible slopes to match the existing ground surface.
- All areas disturbed during construction shall be seeded at 300 lbs./acre with Rye Grass immediately following construction in that area. Contractor shall prepare ground per City Specifications.
- The Contractor shall drain any standing water in sump areas of the proposed pavement. Contractor shall overexcavate and recompact these areas as required to maintain compaction of 95% Standard Proctor Density. Cost to be incidental to pavement.
- The developer for this project is Jay Russell, (316) 722-2417
- Mass Grading to be completed prior to construction as shown on cross-sections to within 0.3'. Contractor shall satisfy himself with the earthwork quantities as bid for excavation and compacted fill prior to bidding. No additional payments or change orders for dirtwork will be accepted.

BENCHMARKS

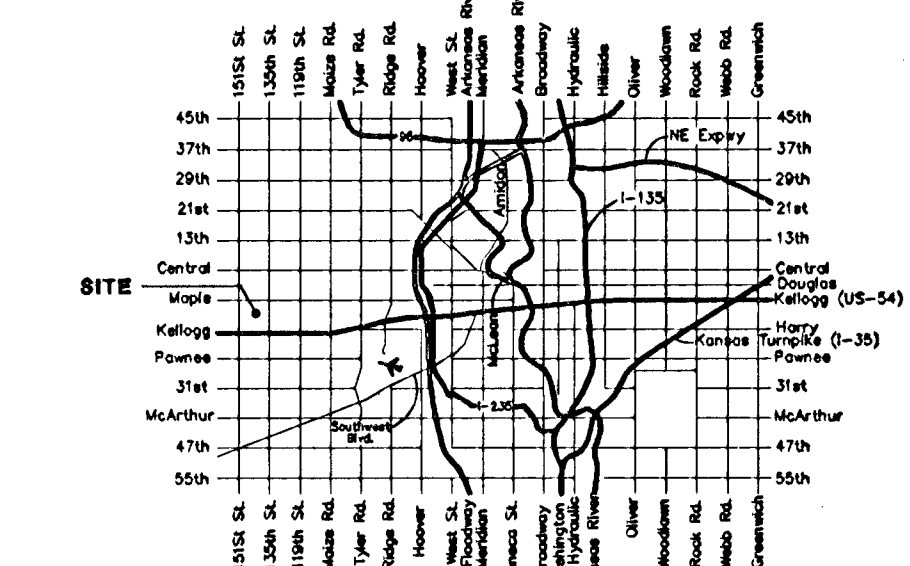
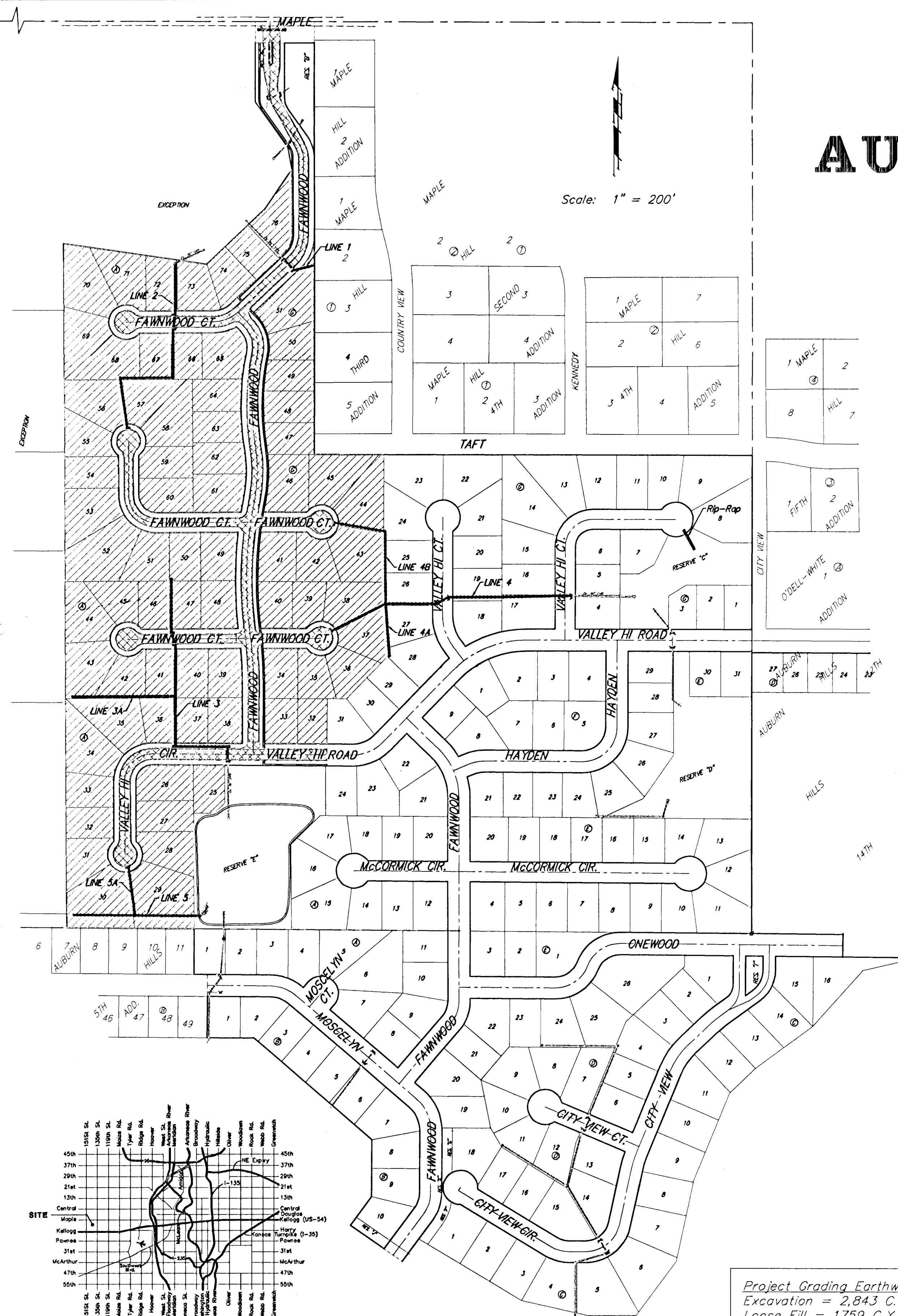
BM #1: "C" Cut on Top of Curb at West Line of Lot 7, Block A, Auburn Hills 5th Addition. Elev. = 207.73 (City Datum)

BM #2: Disc in Back of Curb, North of Front Corner Common to Lots 23 and 24, Block D, Auburn Hills 12th Addition. Elev. = 191.84 (City Datum)

BM #3: "C" Cut in Middle of Curb Inlet Top Adjacent to the South Corner of Lot 15, Block B. Elev. = 196.44 (City Datum)

Sheet Index

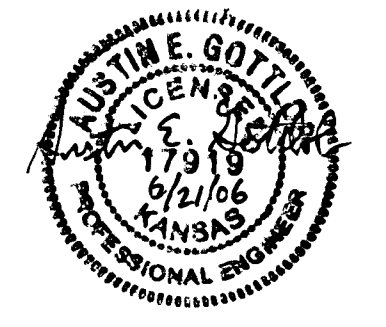
Title Sheet	1
35' Pavement Detail	2
29' Pavement Detail	3
Sign Detail	4
Miscellaneous Details	5
Median Detail	6
Fawnwood	7-9
Fawnwood Ct./Fawnwood	10-12
Fawnwood Ct. (Lots 49-61, Block A)	13-14
Fawnwood Ct. (Lots 41-46, Block G)	15
Fawnwood Ct. (Lots 39-48, Block A)	16
Fawnwood Ct. (Lots 34-40, Block G)	17
Valley Hi Road/Valley Hi Cir.	18-19
Sidewalk Plan	20
SWS Line 1	21
SWS Line 2	22-23
SWS Line 3	24-25
SWS Line 3A	26
SWS Line 4	27
SWS Lines 4 & 4A	28
SWS Line 4B	29
SWS Line 5	30
SWS Line 5A	31
Site Clearing Plan	32-33
Std. Type 1A Double Inlet Detail	34
Standard Drop Inlet Detail	35
Special Yard Inlet Detail	36
Std. Shallow Manhole Detail	37
Manhole Ring & Cover Detail	38
Easement Grading/Erosion Control	39-40
Soil Erosion BMPs	41-44
Street X-Sections	45-57
Coordinate Sheet	58-59
Copy of Plat	60-61



Benefit District: [Hatched Box]
Proposed Streets: [Cross-hatched Box]

Project Grading Earthwork Totals
Excavation = 2,843 C.Y.
Loose Fill = 1,759 C.Y.
Compacted Fill = 55 C.Y.
Total Project Length
4,719 L.F. = 0.90 Miles

Baughman
Baughman Company, P.A. 315 Ella St. Wichita, KS 67211 P 316-262-7271 F 316-262-2044
ENGINEERING | SURVEYING | PLANNING | LANDSCAPE ARCHITECTURE



As Built 12/17/06 Kt